



February 3, 2016

Hello Laser Masters Competitors,

Please find the attached competitors' information package. Which includes:

- Vehicle & Trailer Parking Map (Aerial View)
- Boat Dolly and Rigging Spot Map
- Lunch Procedure / Instructions
- Hotel/Motel Information Data Sheet (REQUIRED AT CHECK-IN)
- Sailing Instructions

**SAVE CHECK-IN TIME:** Know your sail number and complete the required Hotel Motel Information Data Sheet prior to getting in line.

#### ARRIVAL INSTRUCTIONS

Please keep all vehicles and all trailers off of the east lawn at all times. Off-loading trailers is permitted along the sidewalk east of Regatta Headquarters. PLEASED DO NOT BLOCK THE SIDEWALK WITH YOUR VEHICLE. You will not be allowed to park here, it is only for loading and unloading. *Per local ordinance, please keep all vehicles off this grass shoulder throughout the weekend.*

When you arrive take your boat to any number boat rigging spot. These spots are NOT assigned or reserved. Positions maybe selected on a first come basis. Please DO NOT PARK IN A LANE. MAKE SURE YOUR SPOT IS NUMBERED. (See diagram within this document.) After properly placing your boat make sure your vehicle has been moved to a proper parking area so the next vehicle can get into position to unload. After parking proceed to check-in on the second floor of the Sailing Center (REGATTA HEADQUARTERS). Please know your SAIL NUMBER when you check-in.

Trailers attached to vehicles may be parked at the adjacent boat ramp. If you plan to disconnect your trailer from your vehicle it should NOT be at the boat ramp, empty trailers should be parked in the lot WEST of the Boat Ramp (LOT # 2). 30'+ multi-boat trailers may park at the boat ramp or on the USSCMC grass lot west of Regatta Headquarters (LOT #1). Passenger vehicles may park on the grass west of Headquarters, additionally there is ample parking south of the USSCMC property in Indian Riverside Park.

Four Fish Marina has graciously allowed us to use LOT #2 for our regatta, so we wish to return their generosity with our courtesy. Please keep these lots clean and keep your trailers and cars parked neatly.

As an important reminder, camping on USSCMC property is strictly prohibited by Martin County Parks Department.

We are looking forward to an exciting weekend. Thank you for supporting the 2016 Laser Masters Midwinter and Midweek Regattas.

Sincerely,  
Alan Jenkinson

1955 NE INDIAN RIVER DRIVE • JENSEN BEACH, FLORIDA 34957  
TEL: 772-334-8085 • FAX: 772-334-2997 • WWW.USSCMC.ORG • A 501©(3) NON PROFIT ORGANIZATION



# LASER MASTERS PARKING PLAN & EVENT MAP



Boat Rigging  
Areas  
See Map

Boat Launch Area

**SOUTH**  
**LOT**  
Parking  
**Cars**

Unloading Zones

Parking  
competitors  
&  
Volunteers

**WEST LOT #2**  
Boat Trailers

US Sailing Center of Martin County

707

NE Media Ave

413 ft

1995

Imagery Date: 4/23/2012

27°13'47.33" N 80°12'58.71" W elev 3 ft 1808 ft

© 2013 Google

Google earth



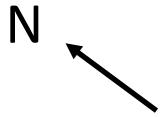
# Laser Masters Race Course Locations



Google earth

miles 4  
km 6

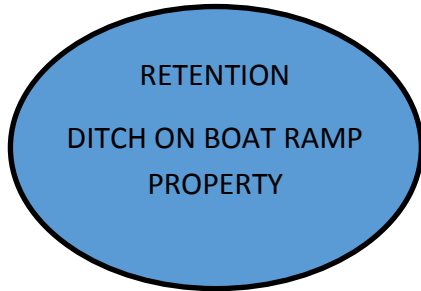




*Spots are NOT assigned and are available on a first come basis.  
Rigging spots are available for your convenience to assist with  
providing some organization.*

# Laser Rigging Spot Map

117	116	115	114	113	112	111	110
118	119	120	121	122	123		



RETENTION  
DITCH ON BOAT RAMP  
PROPERTY

10
9
8
7
6
5
4
3
2
1

11	12	13	14
18	17	16	15

19	20	21	22	23	
29	28	27	26	25	24

Gravel path

51	52	53	54	55	56	57	58	59	60
50	49	48	47	46	45	44	43	42	41

32	33	34	35	36	37	38	39	40
							30	31

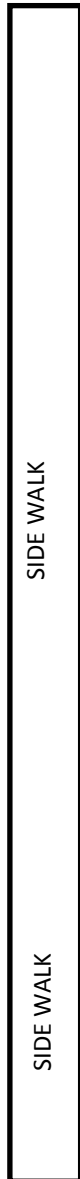
76
75
74
73
72
71
70
69
68
67

66	65
----	----

77	94
78	93
79	92
80	91
81	90
82	89
83	88
84	87
85	86

61	62	63	64
----	----	----	----

95
96
97
98
99
100
101
102
103
104
105
106
107
108
109



SIDE WALK

SIDE WALK



USSCMC REGATTA  
HEADQUARTERS



## Food & Beverage Notes

Bagels & Coffee will be provided early morning each day before launching.

Since the fleet is so large, it is anticipated that there will **NOT** be a lunch break on the water, though this may be subject to change, the plan is to keep racing without a break. The Race Committee will have snack bars, ½ subs and drinking water available on the water for those needing nourishment. We remind you that the entire community of sailing is pushing towards being environmentally friendly, so we encourage our competitors to bring their own reusable water bottles and make every effort to keep trash from getting in the river.

The USSCMC will be providing three evening meals (Saturday, Sunday and Wednesday). Meals are only for the competitors and those guests who have paid in **ADVANCE** for the evening meal. Guests meals are \$12 per meal when paid in advance. If you did not order your guest meals through Regatta Network, then please do so at check-in.

6PM is the targeted time for each of the meals, though we may make adjustments according to the day of sailing. We may also try to start serving earlier on Sunday the 7<sup>th</sup> since it is Super Bowl Sunday. It will take time to cook and serve for such a large crowd so plan on being patient and enjoying a beverage with your friends while you wait. Saturday is Steak or Fish on the Sailing Center grill, Sunday is Chicken or Ribs from Chili's and Wednesday will be Steak or Fish again.

Feeding such a large crowd with good food is always a challenge when you don't have a commercial kitchen. The USSCMC appreciates your support of our regattas and our volunteers will do their best to make your time here enjoyable.

Sail fast and have fun!



The USSCMC is supported by the Treasure Coast Sports Commission. The USSCMC benefits financially as a direct result of the economic impact you bring to our community. Thank you for taking the time to complete this form. One form needed per family. If hotels were booked under a team or club name please provide info.

EVENT NAME: *2016 Laser Masters Midwinters and Midweek Madness*  
*Hosted by US Sailing Center Martin County, Jensen Beach, FL*

DATE OF EVENT: *February 6-11, 2016*

COMPETITOR(S) NAME(S) : \_\_\_\_\_

HOME TOWN: \_\_\_\_\_ STATE: \_\_\_\_\_

**TYPE OF LODGING**

☐ Local or w/ Friends      ☐ Camping      ☐ Commuting from      ☐ Hotel / Motel  
Residence      home

**NAME OF HOTEL/MOTEL & CITY WHERE YOU'RE STAYING:**

Hotel \_\_\_\_\_ City \_\_\_\_\_

Booked as a group/club    Yes   /   No      Group name if YES \_\_\_\_\_

CHECK-IN DATE: \_\_\_\_\_ # OF NIGHTS STAYING IN HOTEL

x \_\_\_\_\_ # OF ROOMS BOOKED IN YOUR PARTY

= \_\_\_\_\_ = TOTAL # OF ROOM NIGHTS

# OF PARTICIPANTS IN ROOM: \_\_\_\_\_ # OF ADULTS IN ROOM: \_\_\_\_\_

**TRANSPORTATION TO TREASURE COAST:**

☐ Airline      ☐ Car Rental      ☐ Drive      ☐ Other \_\_\_\_\_

**WHILE VISITING THE TREASURE COAST CHECK THOSE YOU WILL LIKELY VISIT**

☐ Fast Food Restaurant      ☐ Boat Fuel Marina      ☐ West Marine  
☐ Restaurant Dining      ☐ Mall      ☐ Walmart, Target, Publix (other)  
☐ Auto Fuel Station      ☐ Local Entertainment

Other than sailing list any activities you look forward to while visiting the Treasure Coast (continue on back if needed):

---

PLEASE COMPLETE THIS FORM AND RETURN IT TO REGISTRATION COORDINATOR



## Laser Masters Midwinters

*US Sailing Center Martin County, February 6-8, 2016*

# SAILING INSTRUCTIONS

### 1. Rules

1.1 The regatta will be governed by the *rules* as defined in *The Racing Rules of Sailing*.

1.2 Competitors shall choose to participate in the Laser (Standard Rig) Division or the Radial Division for the duration of the regatta. (No Rig Swapping is permitted in the Laser Division. The 4.7 rig may be used at any time in the Radial Division, however rig swaps are to be made on shore at the center only and sail numbers shall be the same.)

1.3 If the number of entries in either Division exceeds 70 boats, the Organizing Authority may, at its discretion, use a split format for that Division. The criteria and method used for Division Splits will be posted on the Notice Board.

1.4 All hails will use the last 4 digits of the sail number. The race committee will attempt to hail OCS boats. The timing of such hails, the order of hails, or the failure of a competitor to hear the hails shall not be considered an improper action or omission of the RC under RRS 62.1 (a). The RC will make recordings of the starting sequences available for competitors to listen to 30 minutes after the signal boat docks.

1.5 The organizing authority may issue colored bands to be applied to the mast.

1.6 RRS 30.1 and 30.3 are deleted. The wording of Appendix L 11.5 (U-flag rule) is added.

1.7 Appendix T Section A *Penalties While Racing* shall apply.

1.8 Appendix T Section B *Post Race Penalties* shall apply.

1.9 Appendix T Section C *Expedited Hearings* shall apply.

### 2. Notices To Competitors

Notices to competitors will be posted on the Official Notice Board located in the breezeway at Regatta Headquarters.

### 3. Changes To Sailing Instructions

Any change to the sailing instructions will be posted by the end of the competitors meeting on Saturday and for Sunday and Monday before 0900 on the day it will take effect, except that any change in the schedule of races will be posted before protest time expires on the day before it will take effect.

### 4. Signals Made Ashore

4.1 Signals made ashore will be displayed from a pole on the end of the Center dock.

4.2 When Flag AP is displayed ashore, '1 minute' is replaced with 'not less than 45 minutes' in Race Signal AP.

### 5. Racing Area

The racing areas will be on the Indian River Lagoon East of the ICW and either North or South of the Jensen Beach Causeway.

## **6. Schedule of Races**

*Saturday, 6 February*

0800 - 1000 Registration

1030 Skippers Meeting

1130 First warning signal

*Sunday, 7 February*

1030 First Warning signal

*Monday, 8 February*

1030 First warning signal

1500 No warning signal after 1500

*Awards to follow after last race*

There will be a maximum of 4 races per day.

## **7. Courses**

- 7.1 The diagrams and descriptions in “Attachment A & B” define the courses, including the approximate angles between legs, the order in which marks are to be passed, and the side on which each mark is to be left.
- 7.2 The course to be sailed will be designated by signal flag T, W, or O displayed at or near the bow of the signal boat.
- 7.3 When the trapezoidal course (T) is used, the first division for that start will sail the outside course and the second division will sail the inside course.

## **8. Marks**

- 8.1 The starting marks will be yellow inflatable cylinder(s).
- 8.2 The windward, reach, and gate marks will be orange tetrahedrons. The windward-offset mark, if present, will be a green smaller tetrahedron (baby tet).
- 8.3 The finish mark will be a yellow inflatable cylinder.
- 8.4 If only one mark of a gate is in place, it shall be rounded to port.
- 8.5 In a course change, a single yellow tetrahedron will replace the original mark or gate.

## **9. The Start**

- 9.1 Boats shall remain clear of the starting line until code flag F (white flag with red diamond) has been displayed with one sound. Code flag F will be removed with the warning signal for the class being started.
- 9.2 The Class Flag for the Laser Division (standard rig) will be a white Laser Class flag.

- 9.3 The Class Flag for the Radial Division will be code flag R. (Red with yellow cross)
- 9.4 The starting line will be between a staff displaying an orange flag on the race committee signal boat, the course side of a midline mark and the course side of the port-end starting mark.
- 9.5 Rules 30.1 and 30.3 are deleted.
- 9.6 Add RRS 30.4 If flag U has been displayed as the preparatory signal, no part of a boats hull, crew, or equipment shall be in the triangle formed by the ends of the starting line and the first mark during the last minute before her starting signal. If a boat breaks this rule and is identified she shall be disqualified without a hearing but not if the race is restarted or resailed, or postponed, or abandoned before the starting signal. This changes rule 26. The scoring abbreviation UFD is added to RRS A11.
- 9.7 A boat shall not start later than 5 minutes after her starting signal. This changes RRS A 4.2 and A5.

## **10. Change Of The Next Leg Of The Course**

- 10.1 To change the next leg of the course, the race committee may lay a new mark (or gate, or finishing line mark) and remove the original mark(s) as soon as possible. When in a subsequent change a new mark is replaced, it will be replaced by an original mark. The race committee may also move an existing mark.
- 10.2 A gate or offset mark may be adjusted at any time without signaling a course change.

## **11. The Finish**

- 11.1 The finishing line will be between a staff displaying an orange flag on a race committee boat and the nearby finishing mark.
- 11.2 Flag A displayed, with no sound, while boats are finishing means ‘No more races will be started today.’

## **12. Time Limit & Abandonment**

- 12.1 The time limit for the first boat to sail the course in compliance with RRS 28 and finish is 75 minutes. Boats still racing more than 20 minutes after the first boat complies with RRS 28 and finishes will be scored TLE. This changes rules 35, 63.1, A5, and A11.



### **13. Penalties and Protests**

13.1 Appendix T, Section A shall apply.

T1 PENALTIES AT THE TIME OF THE INCIDENT The first two sentences of rule 44.1 are changed to: ‘A boat may take a One-Turn Penalty when she may have broken a rule of Part 2 or rule 31 while *racing*. However, when she may have broken a rule of Part 2 while in the *zone* around a *mark* other than a starting *mark*, her penalty shall be a Two-Turns Penalty.’

13.2 Appendix T, Section B shall apply.

T2 PENALTIES TAKEN AFTER A RACE

T2.1 After a race, a boat that may have broken a rule of Part 2 or rule 31 while *racing* may take a Post-Race Penalty for that incident. The penalty shall be a Scoring Penalty, calculated as stated in rule 44.3(c). However, rules 44.1(a) and (b) apply. A boat takes a Post-Race Penalty by informing the race committee in writing and identifying the race number and when and where the incident occurred.

T2.2 The Post-Race Penalty shall be (a) 20%, if taken before the protest time limit, or (b) 30%, if taken after the protest time limit but before the beginning of a hearing involving the incident.

13.3 Appendix T section C shall apply.  
EXPEDITED HEARINGS

T3 INFORMING THE RACE COMMITTEE

A boat intending to protest or request redress based on an incident in the racing area that she is involved in or sees shall, at the first reasonable opportunity after she finishes, inform the race committee at the finishing line of her intent to protest or request redress and, when applicable, the identity of the protestee.

T4 CHANGES IN HEARING PROCEDURES  
This rule applies to all hearings except hearings under rule 69.

T4.1 If the protest committee is able to assemble the parties to a hearing before the protest or redress time limit, it may begin the hearing and may waive the requirements of rule 61.2 or 62.2.

T4.2 Rule 63.5 is changed to: ‘At the beginning of the hearing, if there is no objection, the protest or request is valid and the hearing shall be continued. If an objection is made, the protest

committee shall take any evidence . . . [no further change].’

T4.3 Insert a new sentence after the third sentence of rule 63.6: ‘However, the committee may limit the number of witnesses and the time during which parties may present evidence and ask questions.’

T4.4 The first sentence of rule 65.2 is changed to: ‘A party to the hearing is entitled to receive the above information in writing, provided the requirements of rule 61.2 or 62.2 were not waived, and she asks the protest committee for it no later than thirty minutes after being informed of the decision or coming ashore following the last race of the day, whichever is later.’

T4.5 The US Sailing prescriptions to rules 60, 63.2 and 63.4 are deleted.

T4.6 The third sentence of rule 66 is changed to: ‘A party to the hearing may not ask for a reopening.’

### **14. Scoring**

14.1 A minimum of one race must be completed to constitute a regatta.

14.2 When fewer than 5 races have been completed, a boat’s series score will be the total of her race scores. (1 drop for 5 or more).

14.3 The NA Masters handicap system will be used to score the overall series. For each race: Apprentices - add 3 points - Masters - add 2 points - Grand Masters - add 1 point - Great Grand Masters - add 0.

14.4 The score for TLE is number of finishers within the time limit plus 2. This changes rule A4.2.

### **15. Safety**

15.1 Personal flotation devices shall be worn at all times while racing, except briefly while changing or adjusting clothing or personal equipment.

15.2 All boats shall check in with the race committee Signal boat displaying code flag “L”, prior to the warning signal of the first race each day by sailing past the stern of the signal boat and hailing her sail number until acknowledged by the race committee.

15.3 A competitor that retires from a race or intends not to start a race shall inform the nearest

safety or race committee boat as soon as possible.

- 15.4 Competitors participate in the regatta entirely at their own risk. See Rule 4, 'Decision To Race'. The organizing authority will not accept any liability for material damage or personal injury or death sustained in conjunction with or prior to, during or after the regatta.

## **16. Prizes**

1<sup>st</sup> Overall, 1<sup>st</sup> Overall Female, 12 prizes to be awarded for the Age divisions with distribution at the discretion of the OA.

# Attachment A

## Trapezoidal Courses

### Code Flag "T"

1



2



Outer Trap

Start, 1 (to port), 2 (to port), 3 (S or P), 2 (to port), 3S (to port), 4 (to port) Finish

Inner Trap

Start, 1 (to port), 5 (S or P), 1 (to port), 2 (to port), 3S (to port), 4 (to port) Finish

5P



5S



3P



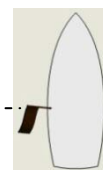
3S



Start



Finish



4





## Attachment B Optional Courses



### Course "W"

Start, 1 (to port), Offset (to port), 3 (S or P), 1 (to port), Offset (to port), 3S (to port), 4 (to port), Finish

2



### Course "O"

Start, 1 (to port), 2 (to port), 3S (to port), 1 (to port), 3S (to port), 4 (to port), Finish

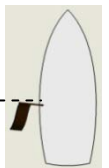
3P



3S



Finish



4



Start

