



**The 49er Midwinter Championship for Open Crews  
The 49er FX Midwinter Championship for Open Crews  
The Nacra 17 Midwinter Championship**

**Miami, Florida, USA**

**January 16-18, 2016**

**Organizing Authority: International 49er, 49er FX and Nacra 17 Class Associations**

# **SAILING INSTRUCTIONS**

## **1 RULES**

- 1.1 The regatta will be governed by the rules as defined in *The Racing Rules of Sailing*.
- 1.2 Only US Sailing Prescriptions to rules 61.4, 67, 76.1 and Appendix R will apply and full text will be posted on the official notice board.
- 1.3 Rule 40 is changed to the following: "When racing both crew shall wear a personal flotation device to the minimum standard ISO 12402-5 (Level 50), or USCG Type III, or AUS PFD II or equivalent."
- 1.4 Rule 44.1 is changed so that the Two-Turns Penalty is replaced with the One-Turn Penalty.
- 1.5 For the 49er and 49er FX classes the following rules are changed:
  - 1.5.1 Rule 50.4 shall not apply.
  - 1.5.2 Rule 42.3 is changed as follows: "(j) A boat may be sculled if the sculling does not propel the boat in any direction."
  - 1.5.3 Rule 49.1 is changed to: "The crew shall use no device designed to position their body outboard other than a trapeze, hiking straps and stiffeners worn under the thighs".

## **2 NOTICES TO COMPETITORS**

Notices to competitors will be posted on the official notice board located at the US Sailing Center (USSC) and will be emailed to all competing boats affected by the Notice. Failure of a boat to receive or read such email will not be grounds for redress, changing rule 62.1(a).

## **3 CHANGES TO SAILING INSTRUCTIONS**

Any change to the Sailing Instructions (SIs) will be posted not less than two hours before the first scheduled warning signal on the day it will take effect, except that any change to the schedule of races will be posted by 2000 the day before it will take effect.

## **4 SIGNALS MADE ASHORE**

- 4.1 Signals made ashore will be displayed at the official flagpole located at USSC. When a signal is displayed over a class flag, it applies to that fleet only.
- 4.2 Flag D displayed ashore with one sound signal means: "the warning signal will be made not less than 30 minutes after flag D is displayed or not before the scheduled time, whichever is later. Boats shall not leave their allocated berth until this signal is made".

## **5 SCHEDULE OF RACES**

- 5.1 Saturday, Sunday and Monday (Jan 16, 17 and 18): First scheduled warning is 1130.
- 5.2 Monday, Jan 18: No warning will be made after 1500.

**6 CLASS FLAGS**

49er	49er on white background
49er FX	FX on blue background
Nacra 17	Nacra 17 on white background

**7 RACING AREAS**

- 7.1 Attachment B shows the location of the race area in Biscayne Bay.
- 7.2 Competitors shall not sail through an active race course of another fleet, while not racing. Boats caught in breach of this SI and rule 24.1 may be protested by the Race Committee.

**8 THE COURSES**

- 8.1 Attachment A shows the course to be sailed, the order in which the marks are to be passed, the side on which each mark is to be left, and the signals indicating the number of rounds to be sailed.
- 8.2 No later than the warning signal, the race committee signal vessel may display the approximate compass bearing from the race committee signal vessel to Mark 1.
- 8.3 If only one leeward mark is present it shall be rounded to port.

**9 MARKS**

Course	Marks 1 and 2	Start and Finish Marks
49er	Orange Shapes	RC Vessels Green Shapes
49er FX	Yellow Shapes	RC Vessels Blue Shapes
Nacra 17	Orange Shapes	RC Vessels Yellow Shapes

**10 THE START**

- 10.1 The starting line will be between a staff displaying an orange flag on the race committee signal boat at the starboard end and either (a) the course side of the starting mark or (b) a staff displaying an orange flag on a boat at the port end.
- 10.2 If flag U has been displayed as the preparatory signal, no part of a boat's hull, crew or equipment shall be in the triangle formed by the ends of the starting line and the first mark during the last minute before her starting signal. If a boat breaks this rule and is identified, she shall be disqualified without a hearing but not if the race is restarted or re-sailed or postponed or abandoned before the starting signal. This changes rule 26. When flag U is used as the preparatory signal rule 29.1 Individual Recall does not apply. The scoring abbreviation for a flag U penalty is UFD. This changes rule A11.
- 10.3 To alert boats that a race will begin soon, the orange starting line flag will be displayed with one sound signal not less than two (2) minutes before the warning signal.

**11 CHANGE OF THE NEXT LEG OF THE COURSE**

To change the next leg of the course, the race committee will move the existing marks (or move the finishing line).

**12 THE FINISH**

The finish line will be between a staff displaying an orange flag on a race committee boat and either (a) the course side of the finish mark or (b) a staff displaying an orange flag on a race committee boat.

**13 TIME LIMITS**

- 13.1 Time limits and target times are as follows:
  - Time Limit            50 minutes
  - Mark 1 time limit   20 minutes
  - Target time           30 minutes
- 13.2 If no boat has passed mark 1 within the mark 1 time limit, the race will be abandoned.
- 13.3 Boats failing to finish within 15 minutes after the first boat sails the course and finishes will be scored Did Not Finish without a hearing. This changes rules 35, A4 and A5.

## **14 PROTESTS AND REQUESTS FOR REDRESS**

- 14.1 Protest forms are available at the USSC. Protests and requests for redress or reopening shall be delivered to the USSC protest desk within the protest time limit.
- 14.2 The protest time limit will be posted on the official notice board and emailed to competitors. The protest time limit for a fleet will be 90 minutes after the last boat of that fleet has finished the last race of the day or the race committee signals no more racing today, whichever is later. The same time limit applies to protests by the race committee and jury about incidents they observe in the racing area. This time limit also applies to requests for redress. This changes rules 61.3 and 62.2.
- 14.3 Notices will be posted (and emailed) within 15 minutes of the protest time limit to inform competitors of hearings in which they are parties. Parties and witnesses shall report to the Protest Office at USSC at the time scheduled for the hearing. Hearings may start before the scheduled time with the agreement of all parties.
- 14.4 The race committee or jury intending to protest a boat under rules 60.2 or 60.3 will comply with rule 61.1(b) by informing her by posting a notice before the end of the protest time limit of the last fleet to finish.
- 14.5 For the purposes of rule 64.3(b) the 'authority responsible' is the measurer appointed by the Organizing Authority.
- 14.6 Breaches of SIs 4.2, 16, 17, 18, 19, and 21 will not be grounds for protest by a boat. This changes rule 60.1(a). Penalties for these breaches may be less than disqualification if the jury so decides.
- 14.7 On the last day of racing, a request for redress from a jury decision shall be delivered no later than 30 minutes after the decision was posted. This changes rule 62.2.
- 14.8 On the last day of racing a request for reopening a hearing shall be delivered (a) within the protest time limit if the party requesting reopening was informed of the decision on the previous day; (b) no later than 30 minutes after the party requesting reopening was informed of the decision on that day. This changes RRS 66.

## **15 SCORING**

- 15.1 One (1) race is required to be completed to constitute a series.
- 15.2 When six (6) or more races have been completed, a boat's final score shall be the total of her race scores excluding her worst score.

## **16 SAFETY**

- 16.1 Boats not leaving the shore for the day's races shall notify the race office as soon as possible.
- 16.2 A boat that retires from a race shall notify the race committee as soon as possible.
- 16.3 When so asked by the race committee signal vessel, all coach and other support boats will collaborate with the race committee in rescue tasks.

## **17 EQUIPMENT AND MEASUREMENT CHECKS**

- 17.1 Any boat or equipment may be checked for compliance with the class rules and sailing instructions at any time. On the water, a boat can be instructed by a race committee measurer to proceed immediately to a designated area for measurement checks.
- 17.2 All boats, when not afloat, shall be placed in the official dinghy park.

## **18 SUPPORT BOATS**

- 18.1 Team leaders, coaches and other support personnel shall not be in the area where boats are racing or within 50 metres of any boat racing from the time of the preparatory signal for the first fleet to start until all boats have finished or the race committee signals a postponement, general recall or abandonment. This SI does not apply during rescue operations.
- 18.2 At all times while on water, support boats shall display either their national flag on a staff with the top of the hoist minimum 1.5 m above water level or their national code letters (minimum height 200mm) on the outside of the hull or on the outboard motor cover.
- 18.3 Support boats that are motoring at more than 5 knots shall remain at least 150 metres from any boat that is racing.
- 18.4 Support boats shall comply with any reasonable request from a regatta official.

- 18.5 All support boats are at all times submitted to the Organizing Committee and race committee authority, are legally considered as assistance / rescue boats and must comply with any instructions given by these authorities or by the police.
- 18.6 The jury may direct the Organizing Authority to revoke privileges from any boat or person found to be in breach of SI 18.

**19 RADIO COMMUNICATION**

A boat shall neither make radio transmissions while racing nor receive radio communications not available to all boats. This restriction applies to all electronic communication devices.

**20 DISCLAIMER OF LIABILITY**

Competitors participate in the regatta entirely at their own risk. See rule 4, Decision to Race. The Organizing Authority will not accept any liability for material damage or personal injury or death sustained in conjunction with or prior to, during or after the regatta.

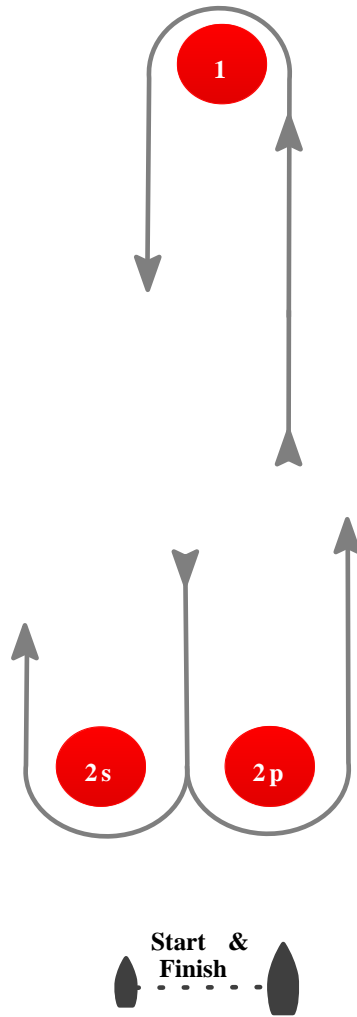
**21 INSURANCE**

Each participating boat shall be insured with valid third-party liability insurance with a minimum cover of Euro 1,500,000 or the equivalent per incident.

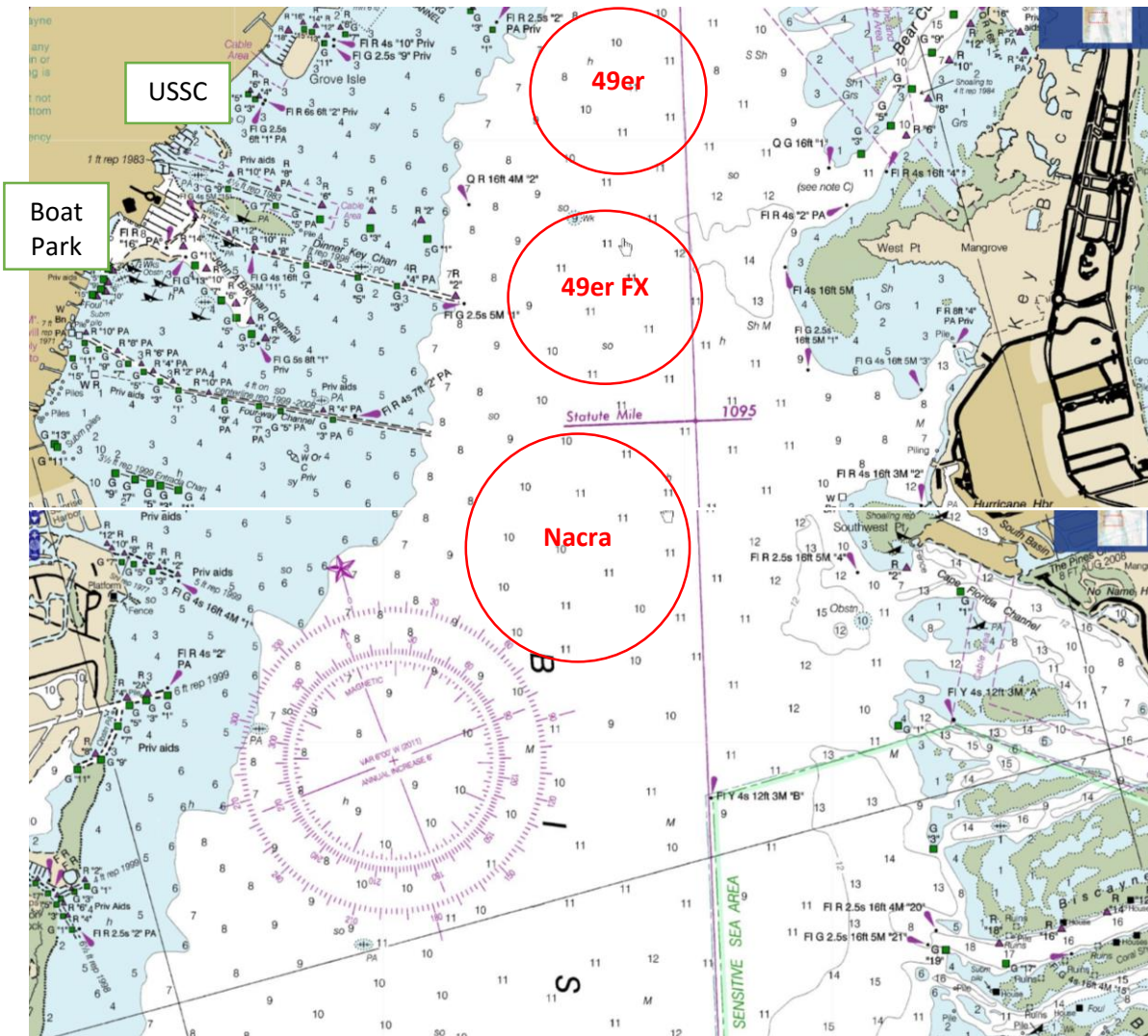
# Attachment A

## Course Layout

<b>L</b>	<b>COURSE : WINDWARD / LEEWARD</b>
<b>Signal</b>	<b>Mark Rounding Order</b>
<b>L2</b>	<b>Start - 1 - 2 s/2 p - 1 - Finish</b>
<b>L3</b>	<b>Start - 1 - 2 s/2 p - 1 - 2 s/2 p - 1 - Finish</b>
<b>L4</b>	<b>Start - 1 - 2 s/2 p - 1 - 2 s/2 p - 1 - 2 s/2 p - 1 - Finish</b>



# Attachment B



- |                |                                   |                                   |
|----------------|-----------------------------------|-----------------------------------|
| <b>49er</b>    | Diameter – 1.0 nm                 | Center – N 25 43.520 W 080 11.840 |
|                | Radio channels – 73 and private 2 |                                   |
| <b>49er FX</b> | Diameter – 1.0 nm                 | Center – N 25 42.360 W 080 11.670 |
|                | Radio channels – 72 and private 3 |                                   |
| <b>Nacra</b>   | Diameter – 1.3 nm                 | Center – N 25 40.900 W 080 11.800 |
|                | Radio channels – 69 and private 4 |                                   |