

# 2016 29er Class World Championships

24<sup>th</sup> to 30<sup>th</sup> July 2016

*The Organizing Authority is the Royal Yacht Club Hollandia  
in conjunction with the International 29er Class Association and the 9er Events Foundation*

## NOTICE OF RACE

### *Amendments*

*Version 3.1, April 5, 2016: Section 1.4 (link to RRS PRESCRIPTIONS - 2013 - 2016 - NETHERLANDS)*

### 1 RULES

- 1.1 The regatta will be governed by the rules as defined in “*The Racing Rules of Sailing*” (RRS).
- 1.2 RRS Appendix P, Special Procedures for Rule 42, will apply.
- 1.3 If there is a conflict between languages the English text will take precedence.
- 1.4 The prescriptions of the Royal Netherlands Sailing Association will apply:  
[www.sailing.org/33568.php](http://www.sailing.org/33568.php)

### 2 ADVERTISING

- 2.1 Boats may be required to display advertising chosen and supplied by the organizing authority.

### 3 ELIGIBILITY & ENTRY

- 3.1 The regatta is open to all boats of the International 29er Class.
- 3.2 Eligible boats may enter through [www.29erworlds.org](http://www.29erworlds.org)
- 3.3 Parent/Guardian Declaration: All helms and crews under 18 years of age during the event shall submit a signed Parent/Guardian Declaration which can be downloaded from the event site. Declaration forms, which must be signed by a Parent/Guardian, can be handed in at registration or emailed to [info@29erworlds.org](mailto:info@29erworlds.org)

### 4 FEES

- 4.1 Entry fee: € 400 until Wednesday 1st June, 00:00 CEST  
€ 500 from Wednesday 1st June, 00:00 CEST – Thursday 14th July, 24:00 CEST
- 4.2 Coach event registration fee (including berth for support boat): € 50 per person. Coaches can register through [www.29erworlds.org](http://www.29erworlds.org)
- 4.3 Refunds for cancelled entries: 50% up to and including Tuesday 31st May, 24:00 CEST. No refund for cancellations after Wednesday 1st June, 00:00 CEST.

### 5 FORMAT OF RACING

- 5.1 The regatta will consist of a qualifying series and a final series.

### 6 SCHEDULE

- 6.1 The championship schedule will be as follows,

<b>Day</b>	<b>Date</b>	<b>Event</b>
1	Friday 22nd July	Registration/Measurement & Inspection
2	Saturday 23rd July	Registration/Measurement & Inspection
3	Sunday 24th July	Registration/Measurement & Inspection Practice races, first warning signal at 14:00 Opening ceremony at 18:00

4	Monday 25th July	Qualifying series races
5	Tuesday 26th July	Qualifying series races
6	Wednesday 27th July	Qualifying series races
7	Thursday 28th July	Final series races
8	Friday 29th July	Final series races
9	Saturday 30th July	Final series races
		Prize giving & closing ceremony

6.2 The scheduled time of the warning signal for the first race each day will be 10:30.

6.3 On the last day of the regatta no warning signal will be made after 15:00, except after a general recall.

## 7 MEASUREMENTS

7.1 All boats will be inspected for class rules compliance prior to racing (see Schedule). Additional spot measurement checks may be carried out during the championship.

7.2 Only one set of sails, and one forestay, shall be used throughout the regatta.

7.3 Equipment shall only be replaced with the permission of the Race Committee.

## 8 SAILING INSTRUCTIONS

8.1 The sailing instructions and a list of competitors will be available at registration and will be posted on the event website when available.

## 9 VENUE

9.1 International Sailing Center Medemblik, Vooroever 1, 1671 SG Medemblik, the Netherlands

9.2 Racing will take place on the IJsselmeer off Medemblik.

9.3 Attachment 1 shows the approximate location of the racing areas.

## 10 COURSES

10.1 The courses to be sailed will be windward-leeward courses with a downwind gate. The target time for each race will be 30 minutes.

10.2 Depending on the number of entries received until Wednesday 1st June, boats will be split over either four fleets sailing on two separate courses or six fleets sailing on three separate courses.

## 11 PENALTY SYSTEM

11.1 Rule 44.1 and rule P.2.1 are changed so that the Two-Turns Penalty is replaced by the One-Turn Penalty.

11.2 Decisions of the international jury will be final as provided in rule 70.5.

## 12 SCORING

12.1 Three (qualifying) races are required to be completed by each fleet to constitute the 2016 29er Class World Championships.

12.2 Five races are required to be completed by each fleet to constitute a qualifying series. If five races are not completed as scheduled, the qualifying series will be extended to complete them.

12.3 If at the end of the qualifying series some boats have more race scores than others, scores for the most recent races will be excluded so that all boats have the same number of race scores.

12.4 For the qualifying series, rule A4.2 is changed so that the scores are based on the number of boats assigned to the largest fleet.

- 12.5 The qualification series position is carried forward as non-excludable points to the final series..
- 12.6 Each final series fleet will be scored separately. Different final series fleets need not have completed the same number of final races. The boats in the Gold fleet will be ranked highest, etc.
- 12.7 Series Scores (apply separately to qualifying and final series):
- (a) When fewer than five races have been completed, a boat's series score will be the total of her race scores.
  - (b) When from five up to and including eight races have been completed, a boat's series score will be the total of her race scores excluding her worst score.
  - (c) When nine or more races have been completed, a boat's series score will be the total of her race scores excluding her two worst scores.

### **13 SUPPORT BOATS**

- 13.1 Support boats shall be registered with the Organizing Authority and will be required to comply with local legislation and event support boat regulations. Coaches are required to comply to complete on-site registration and pay the appropriate fee as per NoR 4.2 at the race office at the venue.
- 13.2 Support boats shall clearly display their three letter national code of their ISAF Member National Authority at all times while afloat, on a flag or outboard cover. The minimum height for the letters shall be 200 mm and visible from both sides of the boat.
- 13.3 If called upon, support boats will be required to act as rescue boats.

### **14 INTERNATIONAL JURY**

- 14.1 An International Jury will be appointed in accordance with rule 91(b). Its decisions will be final as provided in rule 70.5.

### **15 PRIZES**

- 15.1 Prizes will be awarded to the first three boats in the gold fleet, and other fleets.
- 15.2 Class perpetual trophies will be awarded to the overall winning team, top youth team (born 1998 or later) and the top female team. Additional awards will be awarded to the top three female teams.

### **16 RIGHTS TO USE NAMES & LIKENESSES**

- 16.1 By participating in the event, competitors automatically grant to the Organizing Authority the right in perpetuity to make, use and show, from time to time at their discretion, any motion pictures, still pictures and live, taped or filmed television and other reproductions of the athlete during the period of the competition without compensation.

### **17 DISCLAIMER OF LIABILITY**

- 17.1 Competitors participate in the regatta entirely at their own risk. See rule 4, Decision to Race. The Organizing Authority will not accept any liability for material damage or personal injury or death sustained in conjunction with or prior to, during, or after the regatta.

### **18 INSURANCE**

- 18.1 Each participating boat shall be insured with valid third-party liability insurance with a minimum cover of € 1.500.000 per incident or the equivalent.

### **19 FURTHER INFORMATION**

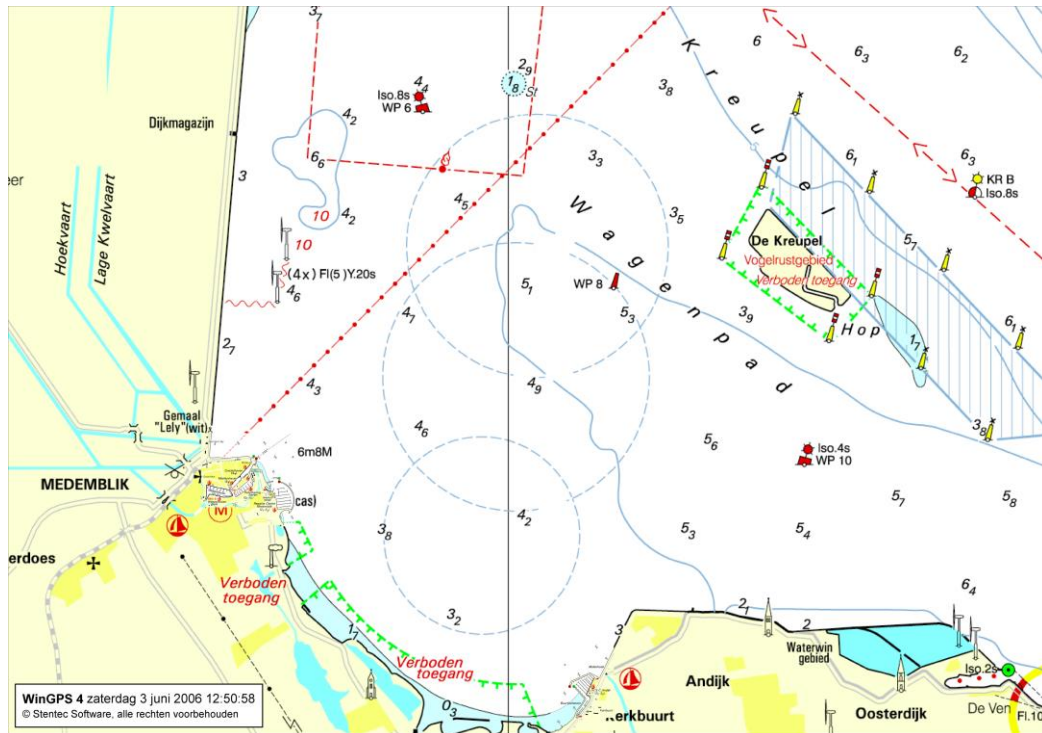
- 19.1 For further information, please contact [info@29erworlds.org](mailto:info@29erworlds.org) or visit [www.29erworlds.org](http://www.29erworlds.org)

**RACING AREA**

**APPROXIMATE POSITION RACING AREA**

Harbour (Regatta Center) – Racing Area (midpoint) distance: approx. 1,0 NM

Compass bearing: approximately: 060.



## ADDITIONAL INFORMATION

### WEBSITE

Please visit [www.29erworlds.org](http://www.29erworlds.org) for additional information.

### RACE OFFICE

The Race Office inside the International Sailing Center Medemblik will be open for registration on Friday 22 July from 0800 to 1800 hrs and on Saturday 23 July from 0800 to 1800 hrs. and during the regatta from 0800 to 1800 hrs.

Adress:           Regatta Center Medemblik  
                  Vooroever 1  
                  1671 SG Medemblik, the Netherlands

Phone:           +31(0)227 540077



### ROUTE TO HARBOUR REGATTA CENTER MEDEMBLIK

Medemblik is a medieval town, with some very small roads. In order to restrict the traffic inconvenience for the people of Medemblik, please start following the white road signs to the recreation site "Vooroever" before entering the town of Medemblik. Later on follow the signs to harbour Regatta Center Medemblik.

### ACCOMMODATION

Competitors shall make their own housing arrangements. For information on accommodation check the web site of the tourist office [www.vvmedemblik.nl](http://www.vvmedemblik.nl) or the event website [www.29erworlds.org](http://www.29erworlds.org)