



2016 Admiral's Cup SAILING INSTRUCTIONS



1 RULES

The regatta will be governed by the *rules* as defined in *The Racing Rules of Sailing*. If there is a conflict between the NOR and the Sailing Instructions, the Sailing Instructions will take precedence.

2 NOTICES TO COMPETITORS

Notices to competitors will be posted on the official notice board located on the pavilion on the north side of the club.

3 CHANGES TO SAILING INSTRUCTIONS

Any change to the sailing instructions will be posted except that any change to the schedule of races will be posted by 1900 on the day before it will take effect.

4 SIGNALS MADE ASHORE

4.1 Signals made ashore will be displayed at the flagpole in front of the clubhouse.

4.2 When flag AP is displayed ashore, '1 minute' is replaced by 'not less than 60 minutes' in the race signal. This changes Race Signal AP.

5 SCHEDULE

Day	Time		
Friday 3/25	1700-1900 hrs	Check in &	
		On-site Registration	
		Practice Sailing	
	1700	A-Cat Clinic	
Sat. 3/26	0800-1000 hrs	Check in &	
		On-site Registration	
		1030 hrs	Skipper's Meeting
		1130 hrs	Warning Signal
Sun. 3/27	1030 hrs	Warning Signal	
		1500 hrs	No Warning Signal
			After 1500 hrs.

Awards Presented as soon as possible after racing.

6 CLASS FLAGS

The class flag is an A-Cat Flag.

7 RACING AREA

Attachment 1 shows the location of the racing area.

8 THE COURSE

8.1 The diagram in Attachment 2 shows the course, including the approximate angles between legs and the order in which marks are to be passed and the side on which the mark is to be left.

8.2 If no offset mark is set, boats shall sail directly from the windward mark to the leeward mark(s) or finish.

8.3 If a single leeward mark is set instead of a gate, the mark shall be left to port.

9 MARKS

Marks are described in Attachment 1.

10 THE START

10.1 The starting line will be between a staff displaying an orange flag on the race committee signal boat at the starboard end and the course side of the port end starting mark.

10.2 A boat starting later than 4 minutes after her starting signal will be scored Did Not Start without a hearing. This changes rule A4.

11 CHANGE OF THE NEXT LEG OF THE COURSE

To change the next leg of the course, the race committee will lay a new mark (or move the finishing line) and remove the original mark as soon as practicable. When in a subsequent change a new mark is replaced, it will be replaced by an original mark.

12 THE FINISH

The finishing line will be between a staff displaying an orange flag on the race committee signal boat and the finishing mark.

13 PENALTY SYSTEM

Rule 44.1 is changed so that the Two-Turns Penalty is replaced by One-Turn Penalty.

14 TIME LIMIT

Boats failing to finish within 30 minutes after the first boat in their class sails the course and finishes will be scored DNF without a hearing. This changes RRS 35, A4 and A5.

15 PROTESTS AND REQUESTS FOR REDRESS

15.1 Protest forms are available outside the Club Office. Protests, requests for redress and reopening shall be delivered there within 60 minutes after the race committee signal boat docks. The docking time will be posted on the Official Notice Board.

15.2 Notices will be posted no later than 30 minutes after the protest time limit to inform competitors of hearings in which they are parties or named as witnesses. Hearings will be held in the club office beginning at the time posted.

15.3 Notices of protests by the race committee or protest committee will be posted to inform boats under rule 61.1(b).

15.4 Breaches of instructions 10.2 will not be grounds for a protest by a boat. This changes rule 60.1(a). Penalties for this breach may be less than disqualification if the protest committee so decides.

15.5 On the last scheduled day of racing a request for reopening a hearing shall be delivered

(a) within the protest time limit if the requesting party was informed of the decision on the previous day

(b) no later than 30 minutes after the requesting party was informed of the decision on that day.

This changes rule 66.

15.6 On the last scheduled day of racing a request for redress based on a protest committee decision shall be delivered no later than 30 minutes after the decision was posted. This changes rule 62.2.

16 SCORING

16.1 One race is required to be completed to constitute a series.

16.2 (a) When fewer than 5 races have been completed, a boat's series score will be the total of her race scores.

(b) When 5 or more races have been completed, a boat's series score will be the total of her race scores excluding her worst score.

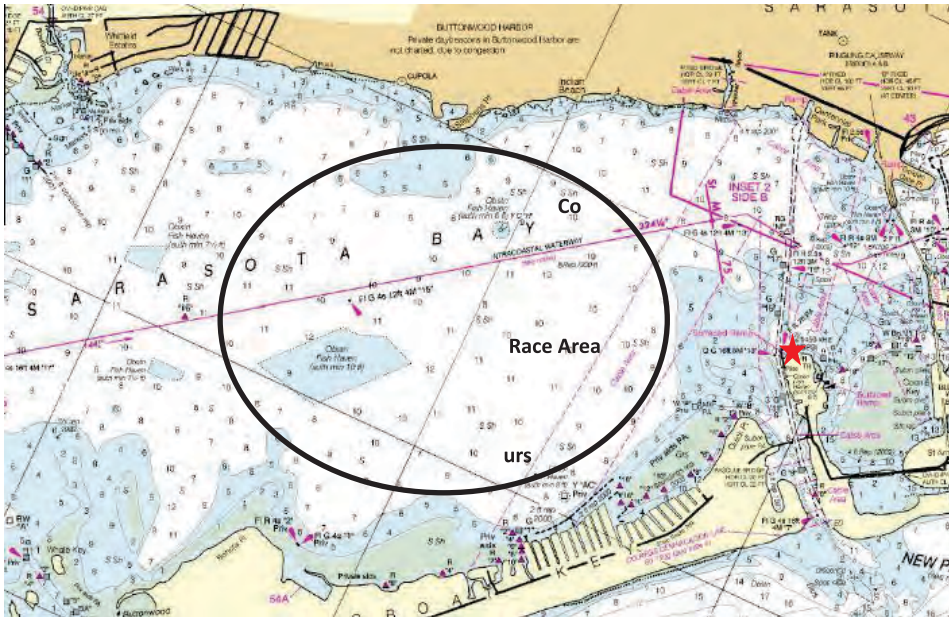
17 AWARDS

Awards will be presented to the top finishers in each A-Cat Class - Classic and Foiler. The Admiral's Cup Perpetual Trophy will be awarded.

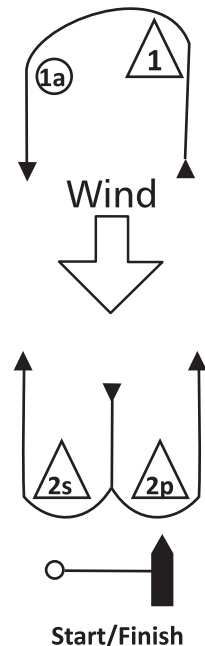
18 DISCLAIMER OF LIABILITY

Competitors participate in the regatta entirely at their own risk. See RRS 4, Decision to Race. The organizing authority will not accept any liability for material damage or personal injury or death sustained in conjunction with or prior to, during, or after the regatta.

Attachment 1 - Mark Description, Race Area



Attachment 2



Course W

W1: Start, 1, 1a, finish

W2: Start, 1, 1a, 2s/2p, 1, 1a, finish

W3: Start, 1, 1a, 2s/2p, 1, 1a, 2s/2p, 1, 1a, finish

2s - Starboard mark

2p - Port mark

VHF Channel	Mark Descriptions
70	Course marks – Yellow tetrahedrons Offset mark – Orange Ball Start/Finish mark – Yellow tetrahedron Change Mark – Green tetrahedron