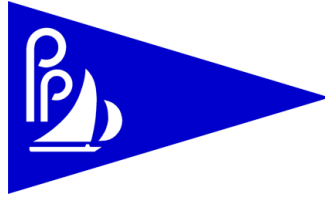


Percy Priest Yacht Club



Distance Course Sailing Instructions

1. RULES

- 1.1. The regatta will be governed by the *rules* as defined in *The Racing Rules of Sailing* (RRS).
- 1.2. Changes will be made to the following RRS for the distance course classes:
29.1 (Individual Recalls), 32.2 (Shortening of Course after the Start), 35 (Time Limit and Scores), 61 (Protest Requirements), 62.1(a) (Redress), 63.1 (Requirement for a Hearing), A2 (Series Score), A4 (Low Point System), A5 (Scores Determined by the Race Committee), A11 (Scoring Abbreviations), and Race Signal AP (Postponement).
- 1.3. US Sailing Prescriptions Rule 60 (redress hearing participation), Rule 63.2 (Time and Place of the Hearing), and Rule 63.4 (Interested Party) will not apply.
- 1.4. All class rules, including measurement and weight rules will apply.

2. **NOTICES TO COMPETITORS** – Notices to competitors will be posted on the official notice board, which will be located on the windows of the Hamilton Creek Sailboat Marina building facing the deck.

3. CHANGES TO SAILING INSTRUCTIONS

- 3.1. Any change to these Sailing Instructions will be posted on the official notice board.
- 3.2. The schedule of races for the first day's races will not be changed.
- 3.3. Any change to the schedule of races for the second or subsequent day's racing will be posted by 1800 hours (6:00 pm) on the day before it will take effect.
- 3.4. Any other change to the Sailing Instructions will be posted at least one hour before the scheduled start of the first race on the day the change will take effect.

4. SIGNALS MADE ASHORE

- 4.1. Signals made ashore will be displayed from the race committee signal boat at the dock.
- 4.2. When flag "AP" is displayed ashore, '1 minute' is replaced with 'not less than 30 minutes' in the Race Signal "AP." This changes the meaning of Race Signal "AP."

5. SCHEDULE OF RACES

- 5.1. The race schedule, dates of racing, number of races, scheduled time of the warning signal for the first race each day and the cut-off time for starting a race on the last day will be as stated in the Notice of Race. The Notice of Race will be posted on the official notice board.
- 5.2. When more than one race will be held on the same day, the warning signal for each succeeding race will be made as soon as practicable. To alert boats that another race will begin soon, flag "AP" may be displayed before a warning signal is displayed.

6. CLASS FLAGS

- 6.1. Classes will be as defined in the Notice of Race.
- 6.2. A class flag will be a unique color, pattern, shape, or class logo or emblem. A description of each class flag will be posted on the official notice board.
- 6.3. Reminder – as stated in the preamble to Race Signals, "When a visual signal is displayed over a class flag, the signal applies only to that class."

7. **RACING AREA** – The racing area will be the area covered by the distance courses used.

8. **MARKS** – Descriptions of the marks will be posted on the official notice board or attached to these Sailing Instructions as an addendum.

- 9. COURSES** – Descriptions and diagrams of the courses will be posted on the official notice board or attached to these Sailing Instructions as an addendum.
- 10. THE START**
- 10.1. The starting order for classes for the first race will be posted on the official notice board. The starting order for subsequent races may be different depending on when classes are ready to start a new race.
 - 10.2. The starting line will be between a staff displaying an orange flag on the race committee signal boat at the starboard end and the starting mark at the port end.
 - 10.3. The race committee may, no later than the warning signal, trail a mark from the stern of the race committee signal boat stationed at the starboard end of the starting line. The trailing mark will be considered to be an extension of the race committee boat. A boat shall not pass between the trailing mark and the race committee boat. A boat shall not touch the trailing mark while racing before starting.
 - 10.4. Boats whose warning signal has not been made shall avoid the starting area during the starting sequence for other classes.
 - 10.5. A boat starting later than 5 minutes after her starting signal will be scored as Did Not Start without a hearing. This changes RRS 63.1, A4 and A5.
- 11. RECALLS** – When an individual recall is signaled, the race committee may at its discretion attempt to hail the sail numbers of the recalled boats. The hail may be by VHF radio on Channel 68, or by loud hailer or bullhorn. Such a hail is a courtesy hail only. Failure of the race committee to hail, failure of a boat to hear the hail, or the order or timing of the hail will not relieve the boat of its obligation to start correctly and will not be grounds for requesting redress. This changes RRS 29.1 and 62.1(a).
- 12. SHORTENING OF COURSE AFTER THE START** – When a distance course is shortened after the start, a race committee boat will drop a new finishing mark in an obvious location within a leg of the course being sailed. The new finishing line will be between a staff displaying flag "S" (shortened course signal flag) on the race committee boat end and the new finishing mark at the other end. This changes RRS 32.2.
- 13. THE FINISH** – A description of the finishing line will be posted on the official notice board or attached to these Sailing Instructions as an addendum.
- 14. TIME LIMIT**
- 14.1. The time limit for the first boat in a class to sail the course and finish will be as follows:
 - Saturday – The time limit for a race on Saturday will be the earlier of three (3) hours after the start of the class or 1600 hours (4:00 pm).
 - Sunday – The time limit for a race on Sunday will be the earlier of two (2) hours after the start of the class or 1300 hours (1:00 pm).
 - 14.2. Boats failing to finish within 60 minutes after the first boat in the class sails the course and finishes will be scored according to Sailing Instruction 16 without a hearing. This changes RRS 35, 63.1, A4 and A5.
 - 14.3. If the time limit in Sailing Instruction 14.2 has expired for a class, the race committee may notify the boats that have not finished. If a boat has been notified that the time limit has expired, she shall immediately return to the starting area to prepare for the start of the next race if an additional race is to be sailed.
- 15. PROTESTS**
- 15.1. A boat intending to protest shall attempt to notify the finish line race committee boat of its intent to protest and identify the protested boat at the first reasonable opportunity. A boat may notify the race committee by sailing by the finish line race committee boat and stating its intention to protest or by using VHF radio on Channel 68. This changes RRS 61.
 - 15.2. Protests and requests for redress or reopening shall be written and delivered to the protest committee chairperson within the protest time limit, which ends 45 minutes after the race committee signal boat docks.
 - 15.3. Notices will be posted no later than 30 minutes after the protest time limit to inform competitors of the time and location of hearings in which they are parties or named as witnesses.
 - 15.4. Protests will then be heard as soon as possible, in approximately the order of receipt.

16. SCORING

- 16.1. One race is required to be completed to constitute a series.
- 16.2. A boat's series score will be the total of her race scores. This changes RRS A2.
- 16.3. For handicap classes, wind dependent Portsmouth handicaps assigned by PPYC will be used for scoring.
- 16.4. A boat that did not finish within the required time after the first boat in her class finished and that was still racing when the time limit expired and is not later disqualified or given redress, will be scored points for the finishing place equal to one more than the number of boats in the class that finished the race and not later disqualified. The scoring abbreviation for such boats will be TLX (did not finish due to time limit expiring). This changes RRS A4, A5, and A11.
- 16.5. A boat that did not start (DNC, DNS, and OCS), did not finish (DNF) for any reason other than that in Sailing Instruction 16.4, or retires (RET) will be scored points for the finishing place equal to one more than the number of boats in the class that entered the regatta.
- 16.6. A boat that was disqualified (BFD, DSQ, DNE, and DGM) will be scored points for the finishing place equal to two more than the number of boats in the class that entered the regatta. This changes RRS A4.2.
- 16.7. All other boats will be scored in accordance with RRS A4.1, A4.2, and A5.

17. COURTESY BROADCASTS – The race committee may make periodic courtesy broadcasts by VHF radio on Channel 68. Information given is provided as a courtesy to the competitors and does not in any way alter the competitor's responsibility to observe the race committee's visual signals. Errors or omissions during these courtesy broadcasts will not be grounds for requesting redress. This changes RRS 62.1(a).

18. SAFETY REGULATIONS – A boat that retires from a race shall notify the race committee as soon as possible.

19. USE OF ENGINE PERMITTED AFTER GROUNDING – In accordance with RRS 42.3(i), a boat is allowed to use its engine to get clear after grounding as long as the boat does not advance its position while under power. Once a boat gets clear it must immediately stop its engine and continue sailing.

20. PRIZES – Prizes will be awarded as indicated in the Notice of Race.

21. DISCLAIMER OF LIABILITY – Competitors participate in the regatta entirely at their own risk. See RRS 4, Decision to Race. Percy Priest Yacht Club will not accept any liability for material damage or personal injury or death sustained in conjunction with or prior to, during, or after the regatta. Competitors agree that the race organizers (organizing authority, race committee, protest committee, host club, sponsors, or any other organization or official) will not be responsible for damage to any boat or other property or the injury to any competitor, including death, sustained as a result of participation in this event. As an inducement to the race organizers to produce the regatta, each competitor agrees that by participating in this event each competitor is deemed to have waived all claims against and released the race organizers from any and all liability associated with such competitor's participation in this event to the fullest extent permitted by law and is deemed to have warranted that he has obtained this same release of the race organizers by each crew member.

22. INSURANCE – Each participating boat shall be insured by its owner with valid third-party liability insurance.

Addendum to Distance Course Sailing Instructions

Courses, Marks and Finish

A 1. MARKS

- A 1.1. The starting marks will be the race committee signal boat at the starboard end and an orange tetrahedron at the port end.
- A 1.2. The optional windward mark will be a yellow tetrahedron.
- A 1.3. The finishing marks will be the race committee signal boat at one end and a yellow cylinder at the other end. The yellow cylinder will be placed on the race committee signal boat's starboard side.
- A 1.4. The rounding mark on Course X ("Short Course") will be a yellow tetrahedron.
- A 1.5. The optional mark in Sailing Instruction 10.3 may be any shape or color.
- A 1.6. The optional inflatable mark used instead of an island in A 2.12. may be any shape or color. If used, a description of the mark will be posted on the notice board.
- A 1.7. Other marks of the course will be channel markers (Course B only), grouped rock markers (Course D, L & W only), single rock marker (Course W only) and islands as indicated in the course descriptions in A 2. See the course diagrams on Attachments A, B and C (Attachments A, B and C do not show the optional windward mark).

A 2. COURSES

- A 2.1. Distance Courses will be either B, D, L, I, W, or X, or a combination of these (BD, LI, DID, etc.).
- A 2.2. **Course Diagrams (Attachments A, B and C)** – See the course diagrams on Attachments A, B and C. Attachments A, B and C do not show the optional windward mark. The written course descriptions below will control when determining the course.
- A 2.3. **Optional Windward Mark** -- At the option of the race committee, a mark may be set to windward of the starting line to create a windward first leg. If the optional "windward mark" is used, the race committee will indicate the required side on which the windward mark shall be left by posting either the letter "P" for port or "S" for starboard. The bearing to the mark will be indicated after the "@" symbol. See Diagram 1 for an example. The optional windward mark will be a mark of the course only on the first leg of the course and shall be rounded only once.
- A 2.4. **Course B ("Bridge" Course)** -- Sail from the starting line (or optional windward mark) toward the bridge leaving "Bear" Island to STARBOARD. Pass any RED and GREEN channel markers on the required side. A channel marker that is missing or has drifted substantially from its normal position does not have a required side. Round the last GREEN channel marker nearest the bridge leaving it to PORT. Sail back to the finishing line, passing the RED and GREEN channel markers on their required side, and leaving "Bear" Island to PORT.
- A 2.5. **Course D ("Dam" Course)** -- Sail from the starting line (or optional windward mark) toward the dam leaving "Luau" Island, "Stone" Island and the "Grouped" Rock Markers (northeast of "Luau" Island) to PORT. Round "Goose" Island to PORT. Sail toward "Luau" Island leaving the "Grouped" Rock Markers, "Luau" Island and "Stone" Island to PORT and continue sailing back to the finishing line. The single rock marker east of "Luau" Island and "Stone" Island is not a mark on Course D and does not have a required side.
- A 2.6. **Course L ("Low Water Dam" Course)** -- Sail from the starting line (or optional windward mark) toward "Stone" Island (between Elm Hill and Hamilton Creek) leaving it, "Luau" Island and the "Grouped" Rock Markers (northeast of "Luau" Island) to STARBOARD. Sail toward the dam rounding "Goose" Island to PORT. Sail back toward "Luau" Island leaving the "Grouped" Rock Markers, "Luau" Island and "Stone" Island to PORT. Continue by sailing back to finishing line.
- A 2.7. **Course I ("Island" Course)** -- Sail from the starting line (or optional windward mark) toward "Bear" Island and leave it to STARBOARD. Then sail a southwesterly heading toward "Pig" Island (the island south of "Bear" and "Raccoon" Islands). Round "Pig" Island to PORT. Sail back to the finishing line leaving "Bear" Island to PORT.
- A 2.8. **Course W ("Wednesday Night" Course)** -- This course will be used only if the water level is sufficient. Sail from the starting line (or optional windward mark) to the "Single" Rock Marker (white buoy) that is east of "Luau" Island and "Stone" Island. Round the "Single" Rock Marker to PORT. Continue sailing leaving all of the "Grouped" Rock Markers to PORT. Sail back to the finishing line leaving "Luau" Island and "Stone" Island to PORT.

- A 2.9. **Course X ("Short" Course)** – Course X is a short course that uses an inflatable mark as the rounding mark (see A 1.4 for a description of the mark). If this course is used, the inflatable mark will be placed in the general area north of "Bear" Island and east of "Stone" Island. Sail from the starting line (or optional windward mark) to the inflatable mark. Round the inflatable mark to PORT and sail back to the finishing line.
- A 2.10. **Single Rock Marker** -- The single rock marker east of "Luau" Island and "Stone" Island has a required side only on Course W.
- A 2.11. **Combination Courses** (BD, LI, DID, etc.) -- When the course to be sailed is a combination of two or more courses, sail them as one course without returning to the starting/finishing line between courses. For example if the course is LI, sail Course L exactly as stated above, but instead of returning to the starting/finishing line, continue sailing and sail Course I exactly as stated above.
- A 2.12. **Optional Inflatable Mark Instead of Island** – At the option of the race committee, an inflatable mark may be used as the rounding mark instead of the island indicated in any of the course descriptions above. If used, a written notice will be posted on the notice board describing the course(s) affected and giving a description of the mark to be used.
- A 2.13. **Course Designation** – The course will be displayed on the starboard side of the race committee boat before the warning signal of each class (see Diagram 1 below for an example). Courses may be different for each class and each race.

DIAGRAM 1–Course Designation Example

L @225 S

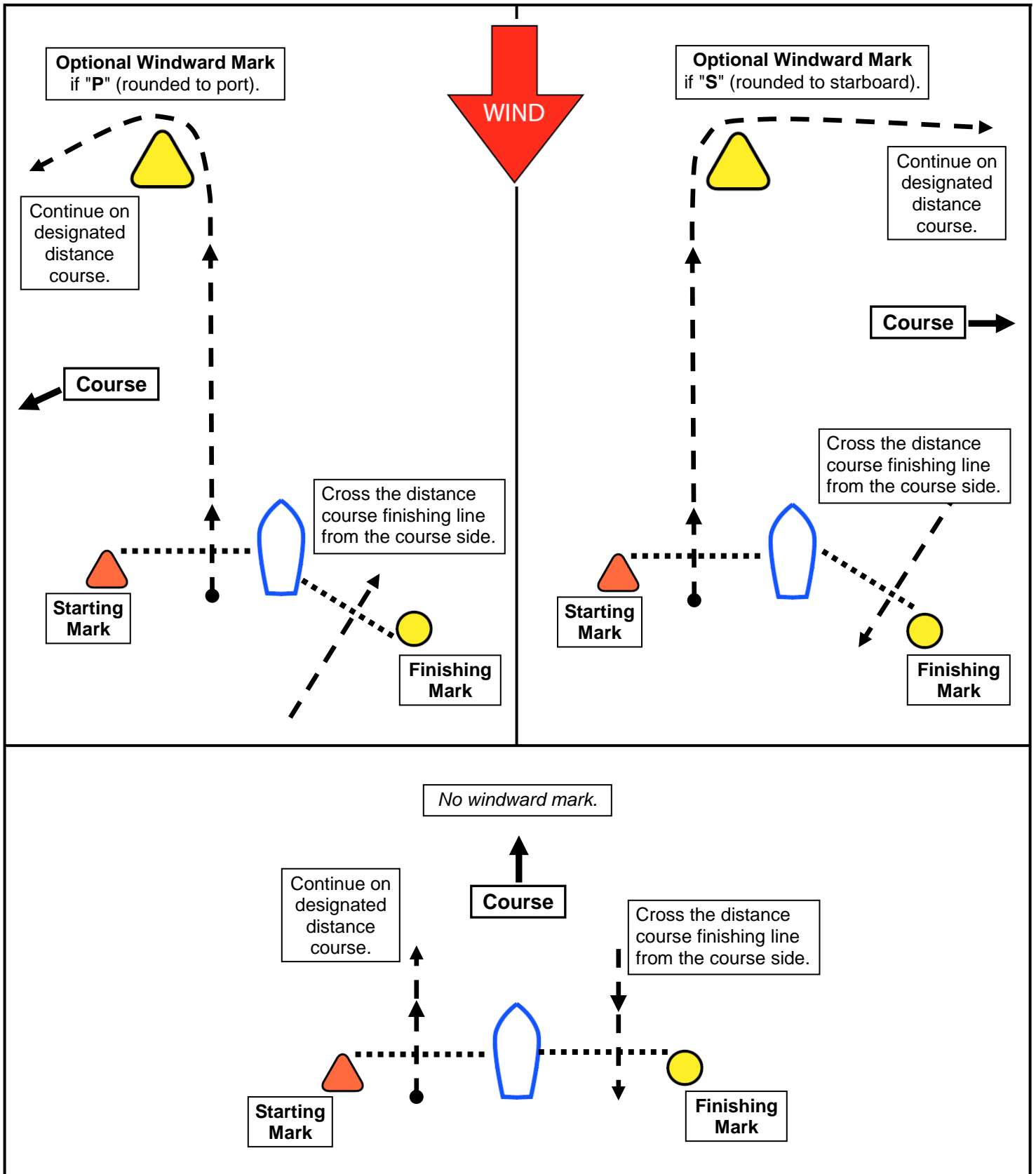
In this example, the course is L ("Low Water Dam"). The **windward mark** is at an approximate bearing of 225° from the race committee boat and is rounded to starboard (leave the mark on your starboard side).

- A 2.14. **The distance course starting and finishing lines will be separate lines set on opposite sides of the race committee boat.** See the attached "Starting Line, Finishing Line and Optional Windward Mark Examples."

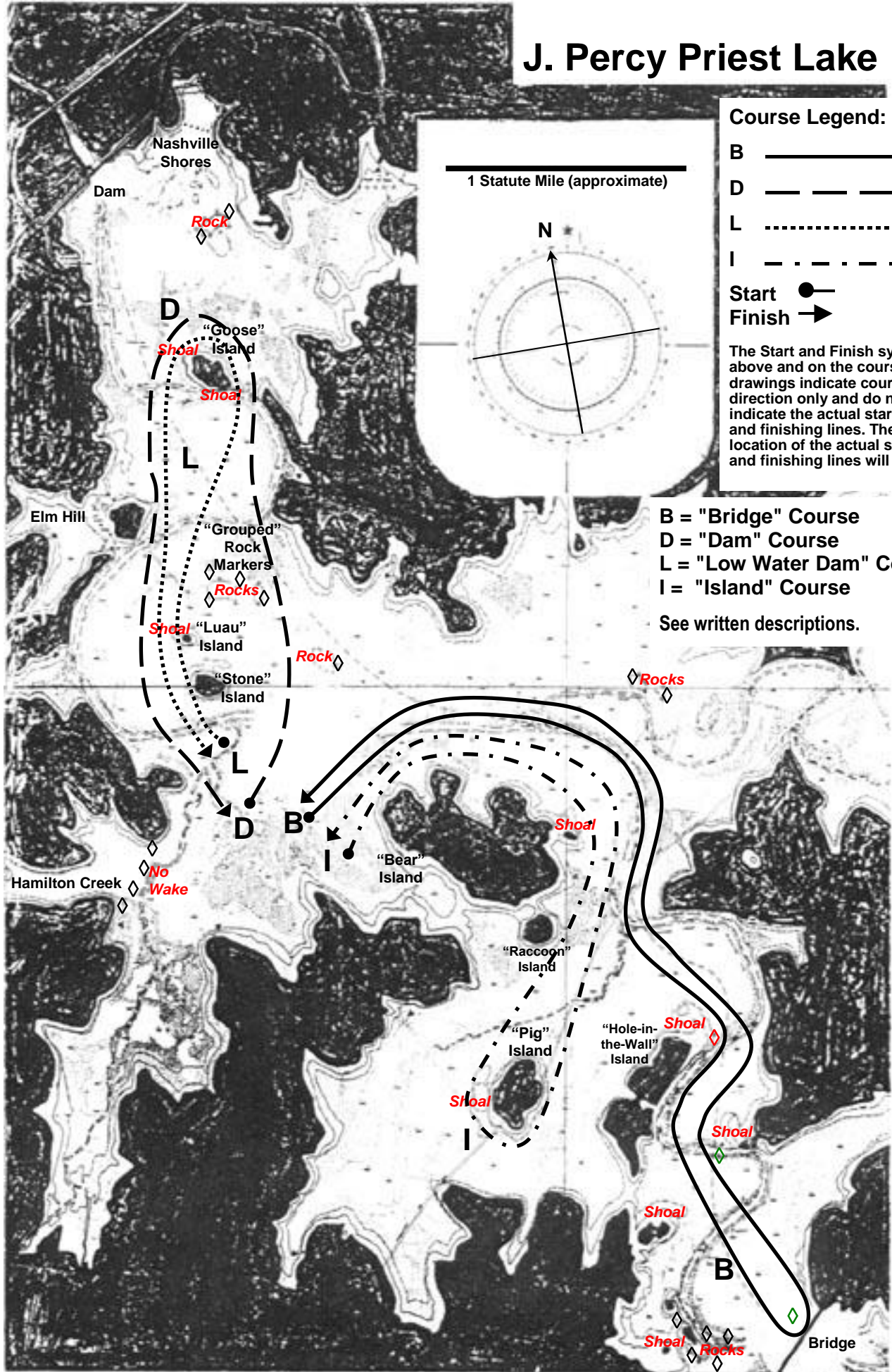
- A 3. THE FINISH** – The finishing line will be between a staff displaying a blue flag on the race committee signal boat at one end and the course side of the other finishing mark at the other end. See A 1.3 for a description of the other finishing mark. As stated in the definition of *Finish* in the RRS, cross the finishing line "from the course side" regardless of which side of your boat the other finishing mark is on.

Starting Line, Finishing Line and Optional Windward Mark Examples for Distance Courses

EXAMPLES ONLY--Please read Sailing Instructions A 1, A 2.3, A 2.13, A 2.14 and A 3.



J. Percy Priest Lake



Course Legend:

- B
- D
- L
- I

Start

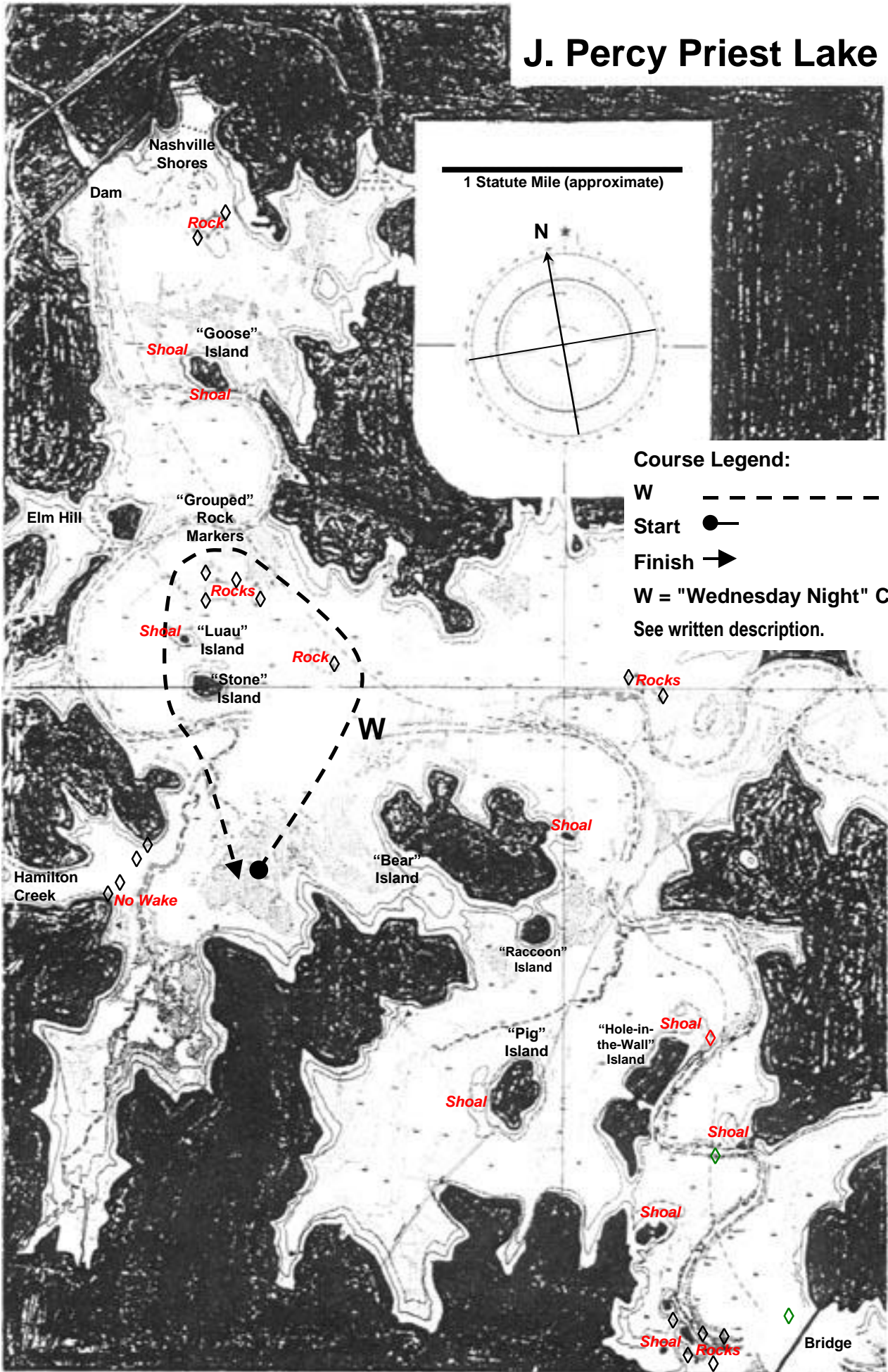
Finish

The Start and Finish symbols above and on the course line drawings indicate course direction only and do not indicate the actual starting and finishing lines. The location of the actual starting and finishing lines will vary.

- B = "Bridge" Course
- D = "Dam" Course
- L = "Low Water Dam" Course
- I = "Island" Course

See written descriptions.

J. Percy Priest Lake



J. Percy Priest Lake

