

2016 GBCA Performance Cup Regatta



Galveston Bay
March 19th and 20th, 2016
Galveston Bay Cruising Association
1500 Marina Bay Dr. Suite 1592 Building #113B, Clear Lake Shores, TX 77565



Sailing Instructions

1. Rules

The regatta will be governed by the *rules* as defined in the current 2013-2016 *Racing Rules of Sailing*, The Notice of Race, and these Sailing Instructions.

2. Notices to Competitors

Notices to competitors will be posted on-line at:

https://www.regattanetwork.com/clubmgmt/applet_club_events.php?CLUB_ID=162 .

3. Changes to Sailing Instructions

Any change to the sailing instructions, schedule of races, or notice of race will be posted before 2200 on the day prior to the day it will take effect.

4. Race Schedule

4.1 The Competitors meeting will be 1900 hours Friday March 18th, 2016.

The warning gun for the first W/L race will be no earlier than 1100 hours both days.

The first boat for the distance race will start no earlier than 11:00 both days.

Subsequent races for each class will follow as soon as possible after the end of the previous race with the intent to run as many races as possible.

4.2 The class starting order for the *first* race and the class flags are shown in Appendix A.

5. Racing Area

The racing area will be between Seabrook Channel Marker No. 2 and the Houston Ship Channel, and between San Leon and The Bayport Ship Channel. Boats shall not enter the Houston Ship Channel or Bayport Ship Channel while *racing*. The Houston Ship Channel and The Bayport Ship Channel are designated as obstructions.

6. Courses and Marks

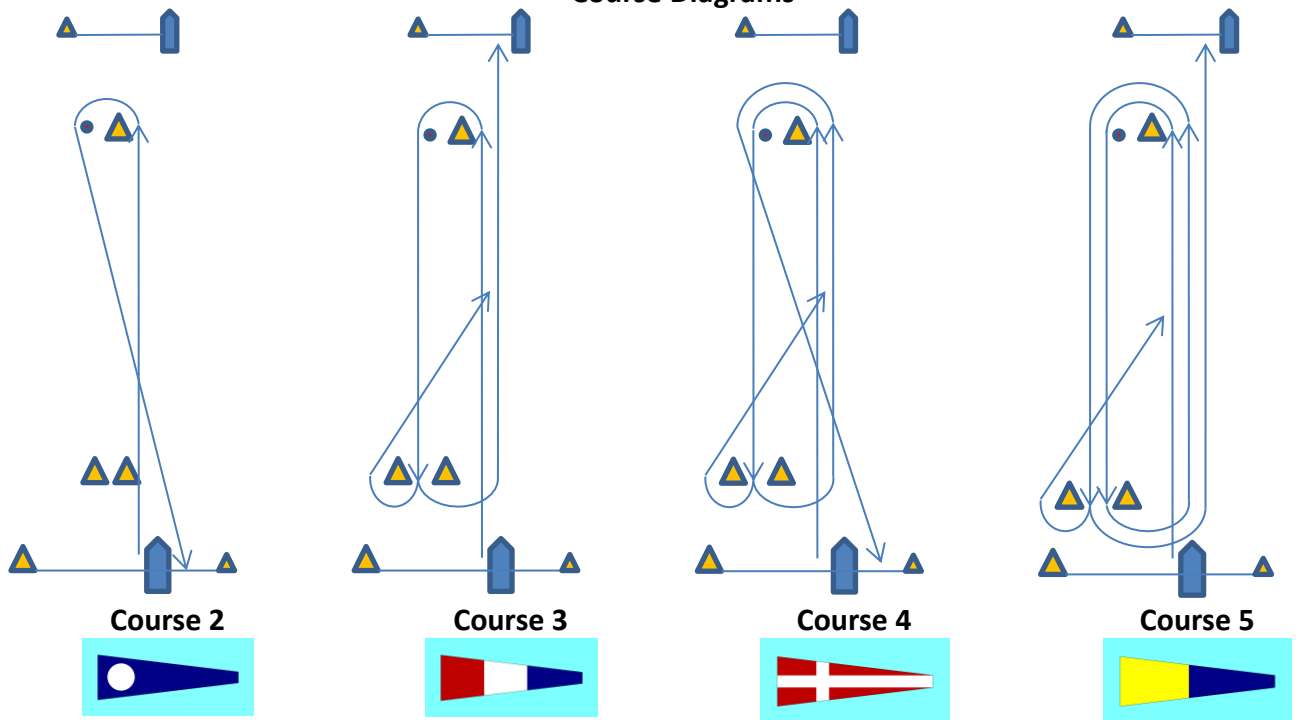
The Starting line for all classes will be located at approximately 1 mile southeast of Clear Creek Channel Mark 1.

Marks will be orange and yellow tetrahedrons for the Windward/Leeward courses. The original course weather turning marks will be Yellow. Change of course weather marks will alternate between orange and yellow. Gates will be yellow. Starting and finishing marks will be orange or red spheres or tetrahedrons, offset marks may be orange, yellow or red tetrahedrons or spheres.

6.1 There will be two sets of weather marks, a Long Course and a Short Course. The tetrahedrons for the Short Course will be smaller (~4') than the tetrahedrons for the Long Course (~8'). The Long course windward mark will be between 0.25 to 0.5 NM beyond the Short Course. A Class will use either the Long course or the Short course for the entire regatta. The courses used for each class are shown in Appendix A

6.2 The number of legs (2-5) to be sailed will be signaled by a numeral pennant correlating with the course diagrams below. The approximate heading and distance to the windward mark may be displayed on a white board on the committee boat.

Course Diagrams



- 6.2a The leeward gate will be set approximately 0.1 nm on the course side of the starting line. The windward finish will be set approximately 0.1nm beyond the windward mark. The leeward gate may be left to either side after passing between the gate.
- 6.2b Windward turning marks and any offset mark shall be left to port.
- 6.2c For the first leg of all courses and the last leg of a leeward finish, the leeward gate is not considered to be a mark of the course. For the last leg of a windward finish, the windward mark is not considered to be a mark of the course. This does not apply in the case of a shortened course where these marks are used as the finish line. (Reference SI 10 for shorten course.)

6.3 Fixed Mark Distance Courses

Fixed mark distance courses will be signaled by numerical pennants (11-13), correlating with the course diagrams and mark rounding directions in Appendix B. Fixed mark courses will use marks “E”, “H” and/or “M52”. Approximate coordinates and description of the marks are:

Mark	Approximate Coordinate	Description
Start/Finish	N 29° 32.400' W 094° 58.729'	<i>Start: Start line described in 8.1 Finish: Finish line described in 11.1c</i>
E	N 29° 35.787' W 094° 56.935'	<i>The Low Range Marker (Upper Range “A”) in Galveston Bay. The mark is an orange and white structure near Houston Ship Channel Marker #73, 0.23 nm NNW of the old low range.</i>
H	N 29° 33.255' W 094° 56.542'	<i>A platform located in Galveston bay, approximately 1.3 nm WSW of the Houston Ship Channel marker #65.</i>
M52	N 29° 31.808' W 094° 55.597'	<i>Galveston Shellfish Harvesting Boundary Marker</i>

In the event any of the marks listed are missing, boats will round the coordinates of the mark.

6.4 If there is time for additional distance races, the new starting hour for the next pursuit start sequence will be announced by VHF radio channel 69.

7. Check In

Before the warning signal of the first race of each day, each boat shall sail past the stern of the Race Committee boat on starboard tack and hail the boat's name or sail number until acknowledged by the Race Committee.

8. The Start

8.1a The starting line for the **Windward/Leeward classes** will be between the staff displaying an **ORANGE** flag on the Race Committee boat on the starboard end and the course side edge of the **PORT** end starting mark. The Race Committee may trail a float and line astern of the Race Committee boat which shall be considered as part of the committee boat. See figure 1.

8.1b The Starting line for the **Fixed Mark Distance classes** will be between the staff displaying a **BLUE** flag on the Race Committee boat on the **PORT** end and the course side edge of the **STARBOARD** end starting mark. The Race Committee may trail a float and line astern of the Race Committee boat which shall be considered as part of the committee boat.

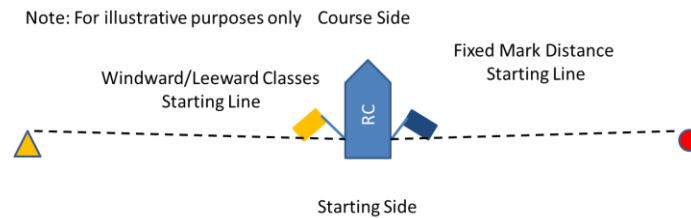


Figure 1

8.2 For the Windward/Leeward classes, Class Flags are as indicated in Appendix A. Boats whose preparatory signal has not been made shall keep clear of the starting area and of all boats whose preparatory signal has been made.

8.3 Any class subjected to a General Recall may be restarted after the last scheduled start for that race. This modifies RRS 29.2.

8.4 The Fixed mark distance classes are pursuit starts, where the boat handicap is accounted for at the start of the race. The time of start for each boat with a given handicap is provided in Appendix B. Times are to be taken from local time as indicated on a GPS. Note: There will be no class flag. The only indication of the course will be as described in Instruction 6.3 This changes rule 26 for the distance classes only.

9. Change of the Next Leg of the Course

If the Race Committee displays the "C" code flag with one or more class flags, the course change applies only to those classes. If the "C" code flag is flown alone, all classes will sail the changed course. Note that the offset marks may not be in place in the event of a course change. This modifies RRS 33.

10. Shorten Course

If the Race Committee displays the "S" code flag with one or more class flags, the shortened course applies only to those classes. If the "S" code flag is flown alone, all classes will sail the shortened course. This modifies RRS 32.

11. The Finish

11.1 The finish line will be:

- 11.1a for a leeward finish, between the staff displaying a blue flag on the Race Committee signal boat on the starboard end and the course side edge of the port end finish mark; side opposite from the starting line.
- 11.1b for a windward finish, between the staff displaying a blue flag on the Race Committee mark set boat on the starboard end and the course side edge of the nearby port end mark, set 0.1 nm beyond the windward mark of that class's course.
- 11.1c for the distance course finish, between the staff displaying a blue flag on the Race Committee signal boat on the starboard end and the course side edge of the port end finish mark. This will be the same line used for the distance start.

12. Time Limit

- 12.1 The time limit for Windward/Leeward courses, shall be ninety minutes or thirty minutes after the first boat properly sails the course and finishes, whichever is longer.
- 12.2 Boats exceeding the time limit will be scored Did Not Finish. This modifies RRS 35.

13. Safety

- 13.1 A boat that retires from a race prior to finishing shall notify the Race Committee as soon as practicable on VHF channel 69. If radio communication is unavailable, call or text message the Race Committee phone number: 281.216.4082. Please state the boat's name, sail number and class and the fact that the boat has retired.
- 13.2 Attention is called to RRS 4: Decision to Race, "The responsibility for a boat's decision to participate in a race or to continue *racing* is hers alone."

14. Protests

The protest and redress procedures for this regatta will utilize basic elements of the new RRS Appendix T, a US Sailing Prescription. Protests shall be communicated to the Race Committee by VHF channel 69 before leaving the race area and must be filed in writing prior to 2 hours after the signal boat docks on the day of protest. Docking time will be posted per Sailing Instruction 2. This modifies RRS 61.

15. Scoring

The Low Point system, RRS Appendix A will apply. One race constitutes a series. There will be no throw-outs. This modifies RRS A2

17. Communication

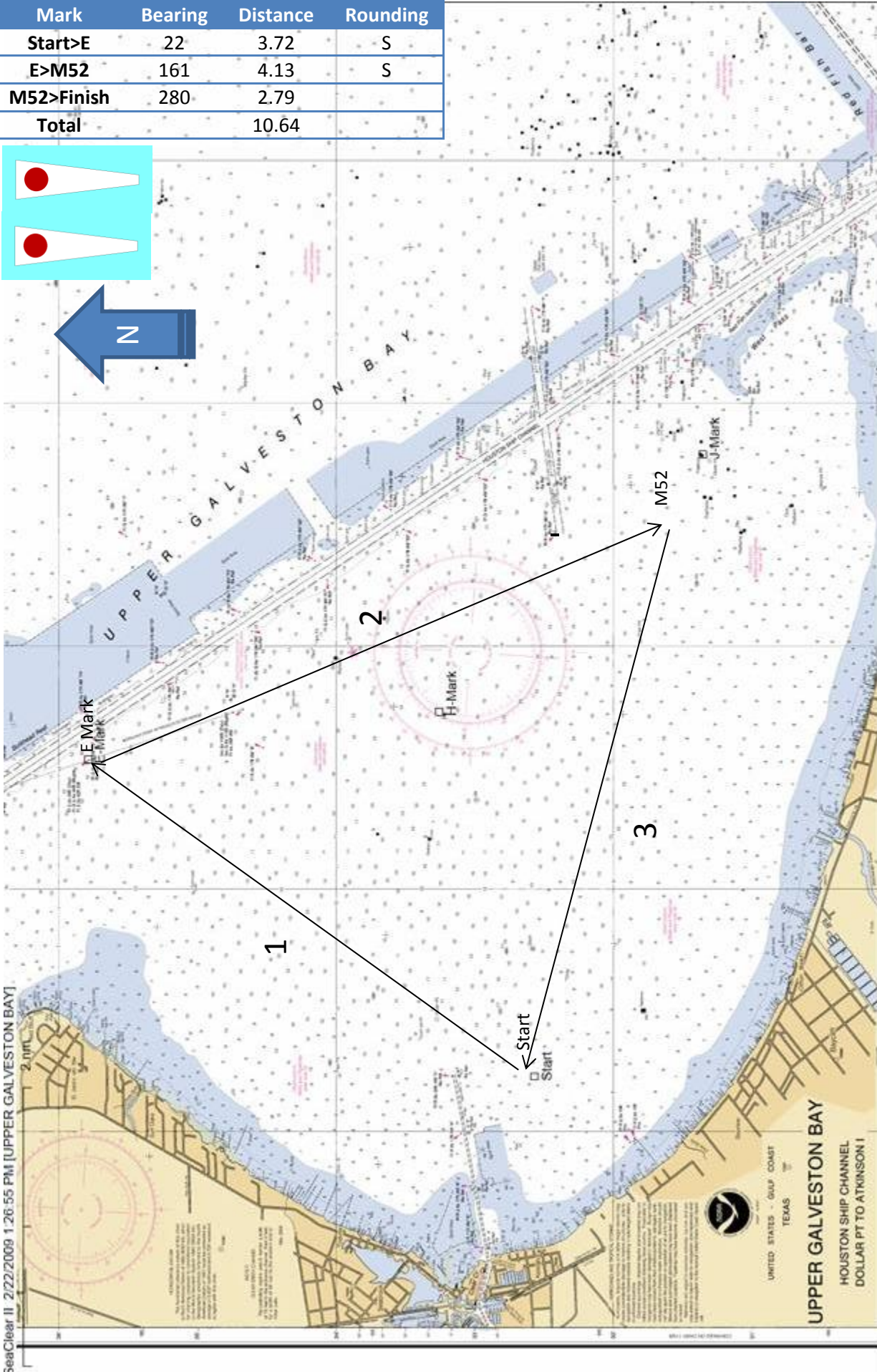
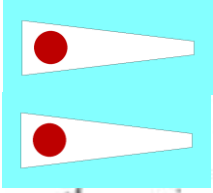
- 17.1 Radio communication for will be conducted on **VHF channel 69**.
- 17.2 The Race Committee will attempt to monitor and may make courtesy announcements on the designated VHF channel for that line. The failure of the Race Committee to make announcements or the manner in which announcements are made will not be grounds for redress. This modifies RRS 62.1(a).
- 17.3 In addition to signaling Individual Recalls in accordance with RRS 29.1, as a courtesy, the Race Committee will attempt to broadcast the names or sail numbers of boats that have started early. Failure to make such a broadcast, failure of a boat to receive that broadcast, a boat's order in that broadcast, or the promptness of that broadcast will not be grounds for redress. This modifies RRS 62.1(a).
- 17.4 If a weather-related postponement is required it will be announced at 1000 on VHF Channel 69 for that line.

Appendix A
2016 Performance Cup Regatta
First Race Starting Order / Class Flags

Fleet	Flag	Course
J/109	J109 (blue on white)	Long
J/105	J105 (blue on yellow)	Long
PHRF Spin Factory Sprit	Yellow	Long
J/22	Purple	Short
Fixed Mark Distance classes	N/A	Distance fixed marks

Appendix B - Course 11

Mark	Bearing	Distance	Rounding
Start>E	22	3.72	S
E>M52	161	4.13	S
M52>Finish	280	2.79	
Total		10.64	



SeaClear II 2/22/2009 1:26:55 PM [UPPER GALVESTON BAY]

UNITED STATES - GULF COAST
TEXAS

UPPER GALVESTON BAY
HOUSTON SHIP CHANNEL
DOLLAR PT TO ATKINSON I

**Appendix B - Course 11
Pursuit Start Sheet For
Galveston Bay Cruising Association
2016 GBCA Performance Regatta**

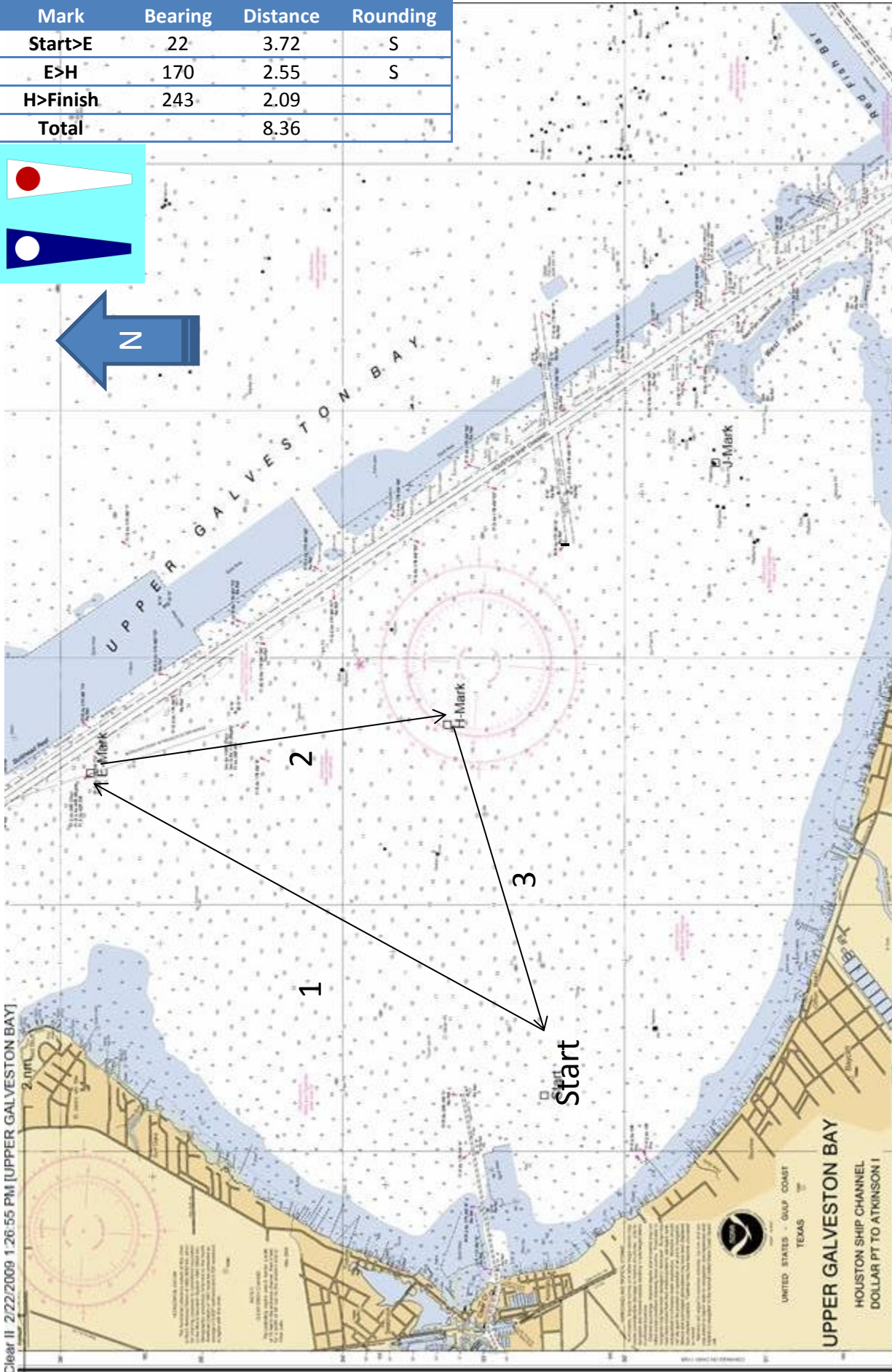
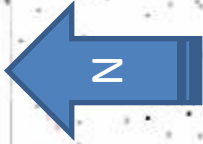
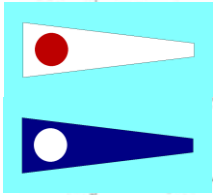
Start Time: **Distance:** **MAX PHRF:**

Start	Sail#	Skipper	Boat Name	Class/Fleet	PHRF
11:00:00	39	Suzy Bradford	Sea- Esta	Distance Cruising Club D	186
11:00:43	291	Augie Lipsanen	NONAME	Distance Cruising Club D	182
11:02:29	655	Robert Crosby	Royal Crescent	Distance Cruising Club D	172
11:02:40	398	Ben Miller	Flyer	Distance PHRF Spin D	171
11:06:55	10	Gerhard Wittich	Figaro	Distance PHRF Spin D	147
11:10:38	53	Chris Haas	Solaire	Distance PHRF Spin D	126
11:10:38	40645	Chuck Wielchowsky	Texas Ranger II	Distance PHRF Spin D	126
11:11:10	7150	paul tullos	terrorist	Distance PHRF Spin D	123
11:11:42	N/A	Dave Hinrichsen	Gaucho	Distance PHRF Spin D	120
11:11:42	21335	Walter Horton	Firewater	Distance PHRF Spin D	120

Created by Regatta Network -- Online Sailing Event Registration and Management Services.
© 2005 [Regatta Network](http://www.regattanetwork.com/), All Rights Reserved. <http://www.regattanetwork.com/>

Appendix A - Course 12

Mark	Bearing	Distance	Rounding
Start>E	22	3.72	S
E>H	170	2.55	S
H>Finish	243	2.09	
Total		8.36	



Clear II 2/22/2009 1:26:55 PM [UPPER GALVESTON BAY]

UPPER GALVESTON BAY
HOUSTON SHIP CHANNEL
DOLLAR PT TO ATKINSON I
TEXAS
UNITED STATES - GULF COAST

**Appendix B - Course 12
Pursuit Start Sheet For
Galveston Bay Cruising Association
2016 GBCA Performance Regatta**

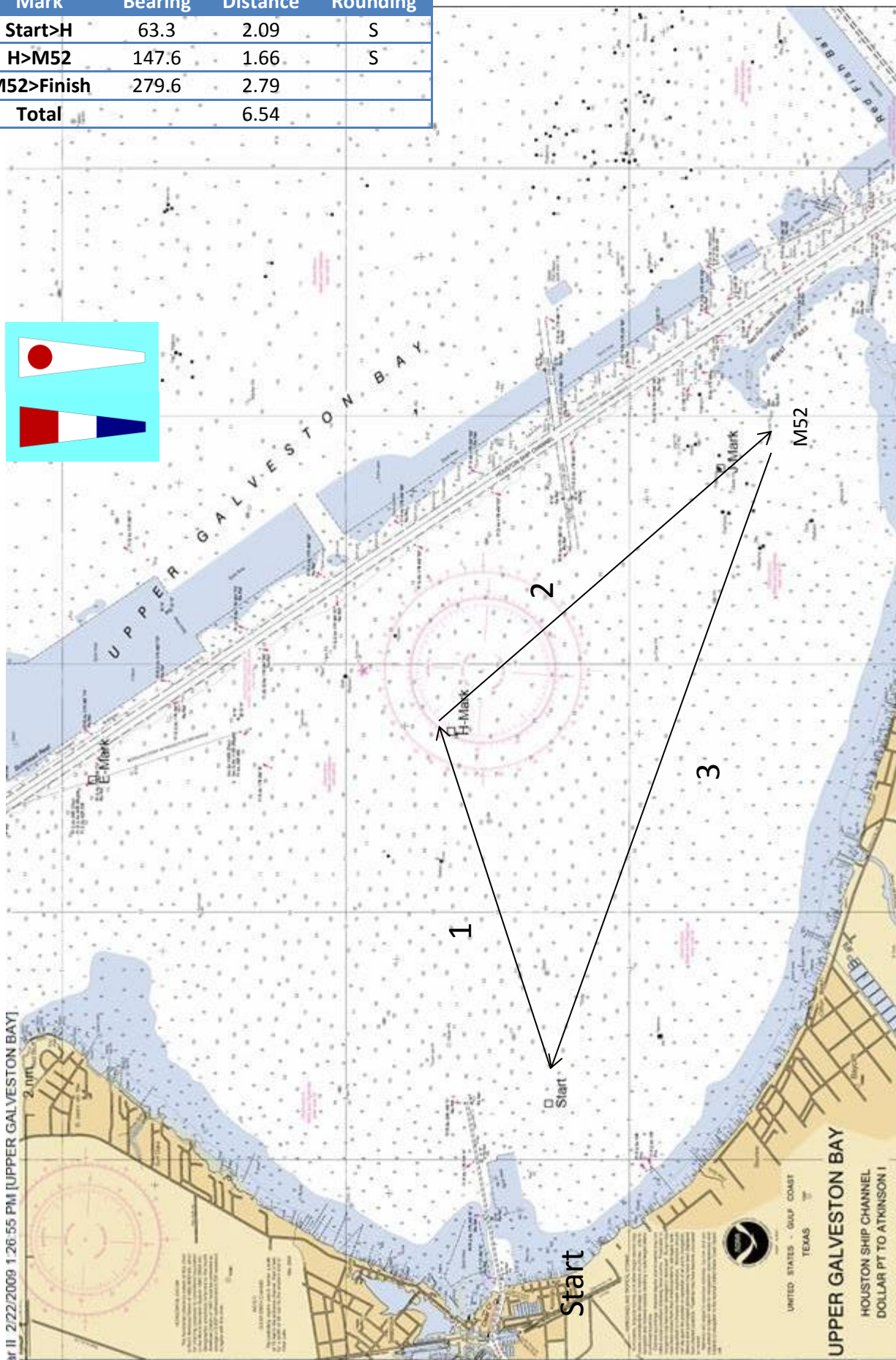
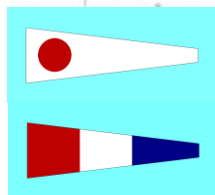
Start Time: **Distance:**

Start	Sail#	Skipper	Boat Name	Class/Fleet	PHRF
11:00:00	39	Suzy Bradford	Sea- Esta	Distance Cruising Club D	186
11:00:33	291	Augie Lipsanen	NONAME	Distance Cruising Club D	182
11:01:57	655	Robert Crosby	Royal Crescent	Distance Cruising Club D	172
11:02:05	398	Ben Miller	Flyer	Distance PHRF Spin D	171
11:05:26	10	Gerhard Wittich	Figaro	Distance PHRF Spin D	147
11:08:22	53	Chris Haas	Solaire	Distance PHRF Spin D	126
11:08:22	40645	Chuck Wielchowsky	Texas Ranger II	Distance PHRF Spin D	126
11:08:47	7150	paul tullos	terrorist	Distance PHRF Spin D	123
11:09:12	N/A	Dave Hinrichsen	Gaucho	Distance PHRF Spin D	120
11:09:12	21335	Walter Horton	Firewater	Distance PHRF Spin D	120

Created by Regatta Network -- Online Sailing Event Registration and Management Services.
© 2005 [Regatta Network](http://www.regattanetwork.com/), All Rights Reserved. <http://www.regattanetwork.com/>

Appendix B - Course 13

Mark	Bearing	Distance	Rounding
Start>H	63.3	2.09	S
H>M52	147.6	1.66	S
M52>Finish	279.6	2.79	
Total		6.54	



SeaClear II 2/22/2009 1:26:55 PM [UPPER GALVESTON BAY]

**Appendix B - Course 13
Pursuit Start Sheet For
Galveston Bay Cruising Association
2016 GBCA Performance Regatta**

Start Time: **Distance:**

Start	Sail#	Skipper	Boat Name	Class/Fleet	PHRF
11:00:00	39	Suzy Bradford	Sea- Esta	Distance Cruising Club D	186
11:00:26	291	Augie Lipsanen	NONAME	Distance Cruising Club D	182
11:01:31	655	Robert Crosby	Royal Crescent	Distance Cruising Club D	172
11:01:38	398	Ben Miller	Flyer	Distance PHRF Spin D	171
11:04:15	10	Gerhard Wittich	Figaro	Distance PHRF Spin D	147
11:06:32	53	Chris Haas	Solaire	Distance PHRF Spin D	126
11:06:32	40645	Chuck Wielchowsky	Texas Ranger II	Distance PHRF Spin D	126
11:06:52	7150	paul tullos	terrorist	Distance PHRF Spin D	123
11:07:11	N/A	Dave Hinrichsen	Gaucho	Distance PHRF Spin D	120
11:07:11	21335	Walter Horton	Firewater	Distance PHRF Spin D	120

*Indicates PHRF rating was computed from Portsmouth rating [(DPN-55) * 6]

Created by Regatta Network -- Online Sailing Event Registration and Management Services.
© 2005 [Regatta Network](http://www.regattanetwork.com/), All Rights Reserved. <http://www.regattanetwork.com/>

Appendix C
Registrants For
2016 GBCA Performance Regatta
Galveston Bay Cruising Association
March 19-20, 2016
38 people have registered for this event

Distance Cruising Club

	Skipper	Club	Sail#	Boat Name	Fleet / Division	Make/Model	Rating	Date Entered
1.	Robert Crosby	LYC	655	Royal Crescent	Distance Cruising Club / D	Catalina / 42 MK II	172	03/13/2016
2.	Augie Lipsanen	GBCA	291	NONAME	Distance Cruising Club / D	S2 / 7.9	182	03/15/2016
3.	Suzy Bradford	SSBG/GBCA	39	Sea- Esta	Distance Cruising Club / D	Morgan / 32	186	02/17/2016

Distance PHRF Spin

	Skipper	Club	Sail#	Boat Name	Fleet / Division	Make/Model	Rating	Date Entered
1.	Walter Horton	GBCA	21335	Firewater	Distance PHRF Spin / D	C & C / 38	120	03/09/2016
2.	Chris Haas	GBCA	53	Solaire	Distance PHRF Spin / D	Ericson / 39	126	02/17/2016
3.	Gerhard Wittich	GBCA	10	Figaro	Distance PHRF Spin / D	Saga / 43	147	03/06/2016
4.	Ben Miller	GBCA	398	Flyer	Distance PHRF Spin / D	Catalina / 30	171	03/08/2016

Distance PHRF Spin Aftermarket Sprit

	Skipper	Club	Sail#	Boat Name	Fleet / Division	Make/Model	Rating	Date Entered
1.	Dave Hinrichsen	N/A	N/A	Gaucho	Distance PHRF Spin Aftermarket Sprit / D	Beneteau / 25	120	02/18/2016
2.	paul tullos	none	7150	terrorist	Distance PHRF Spin Aftermarket Sprit / D	sparcraft / 35	123	03/17/2016
3.	Chuck Wielchowsky Ross Birdsong	HYC / GBCA	40645	Texas Ranger II	Distance PHRF Spin Aftermarket Sprit / D	Morgan / Morgan 36-4/6 CB	126	03/10/2016

J-105

	Skipper	Club	Sail#	Boat Name	Fleet / Division	Make/Model	Rating	Date Entered
1.	Brad Robbins	LYC/GBCA	294	Rumpus	J-105 /	J Boats / J-105	0	02/15/2016
2.	J B Bednar Kevin Bednar	LYC/GBCA	296	Stinger	J-105 /	J-Boats / J/105	0	02/17/2016
3.	John Bell	CCYC	430	Kinderspel2	J-105 /	J Boats / J105	0	02/24/2016
4.	Bill Lakenmacher	LYC	649	Radiance	J-105 /	J Boat / J/105	0	02/29/2016
5.	John S Barnett	Lakewood YC	642	Vici	J-105 /	j-boats / 105	0	03/14/2016
6.	Uzi Ozeri	LYC	usa378	infinity	J-105 /	j boat / sloop	87	02/17/2016

J-109

	Skipper	Club	Sail#	Boat Name	Fleet / Division	Make/Model	Rating	Date Entered
1.	David Christensen David E Christensen	GBCA/LYC	238	Airborne	J-109 /	J boats / J/109	69	02/29/2016
2.	Andy Wescoat	GBCA	45	Harm's Way	J-109 /	J Boats / J109	69	02/29/2016
3.	Christopher Dees	GBCA	162	Leading Edge	J-109 /	J / 109	69	03/10/2016

J-22

	Skipper	Club	Sail#	Boat Name	Fleet / Division	Make/Model	Rating	Date Entered
1.	Stuart Lindow Stuart Lindow	None	53	Southern Belle	J-22 /	J / 22	0	02/18/2016
2.	Dov Kivlovitz	none	951		J-22 /	J Boat / j/22	0	03/05/2016
3.	Rick Duste	GBCA	392	Loose Cannon	J-22 /	J-Boat / J-22	0	03/07/2016
4.	Tom Meeh Tom Meeh	GBCA	878	Meehem	J-22 /	J Boats / J22	0	03/08/2016
5.	Doug Cummings	None	498	MSLead	J-22 /	J boats / J22	0	03/13/2016
6.	Anne Lee	HYC	732	Helms a Lee	J-22 /	J Boats / J/22	0	03/17/2016
7.	Gary Thies Gary Thies	GBCA	578	Student Driver	J-22 /	J-Boat / J-22	174	02/15/2016
8.	Larry Blankenhagen	Blankenhagen Larry	1531	Parrot Tales Light	J-22 /	J-Boat / J 22	174	02/28/2016
9.	Taylor Lutz	LYC / TCYC	USA 667	Syzygy	J-22 /	jboats / J22	174	03/12/2016
10.	Julia Goetschius	HOUSTON YACHT CLUB	877	Crayola	J-22 /	J-Boats / J/22	174	03/16/2016

W/L PHRF Spin Factory Sprit

	Skipper	Club	Sail#	Boat Name	Fleet / Division	Make/Model	Rating	Date Entered
1.	Forbes Durdin	LYC	850	Mojito	W/L PHRF Spin Factory Sprit /	J boats / J70	0	03/16/2016
2.	J.D. Hill Susan Hill	GBCA, LYC	USA74	Second Star	W/L PHRF Spin Factory Sprit /	J Boats / J/122	33	03/16/2016
3.	Gregory Way	LYC	75	Gold Rush	W/L PHRF Spin Factory Sprit /	C&C / 115	66	03/01/2016
4.	Pedro Gianotti	GBCA	5101	Pingo	W/L PHRF Spin Factory Sprit /	Billoch / Billoch 26	90	02/25/2016
5.	Captain Crunch	LCYC	78	Team Tejano	W/L PHRF Spin Factory Sprit /	Melges / 24	96	02/19/2016
6.	Brian Tulloch	HYC	US 51	Water Nymph III	W/L PHRF Spin Factory Sprit /	Melges / M-24	96	03/11/2016
7.	Dan Sullivan	SYC	31	Little Joe	W/L PHRF Spin Factory Sprit /	J Boats / J/92s	99	02/18/2016
8.	George Cushing George Cushing	GBCA	77	#77	W/L PHRF Spin Factory Sprit /	J Boats / J 92	108	03/11/2016
9.	Haleigh Tuma *	GBCA, HYC, CLRA, TCYC, IYAC	537	Honey Badger	W/L PHRF Spin Factory Sprit /	J Boats / J-80	120	03/16/2016

Thanks to all our Sponsors!



threefatbrothers.com