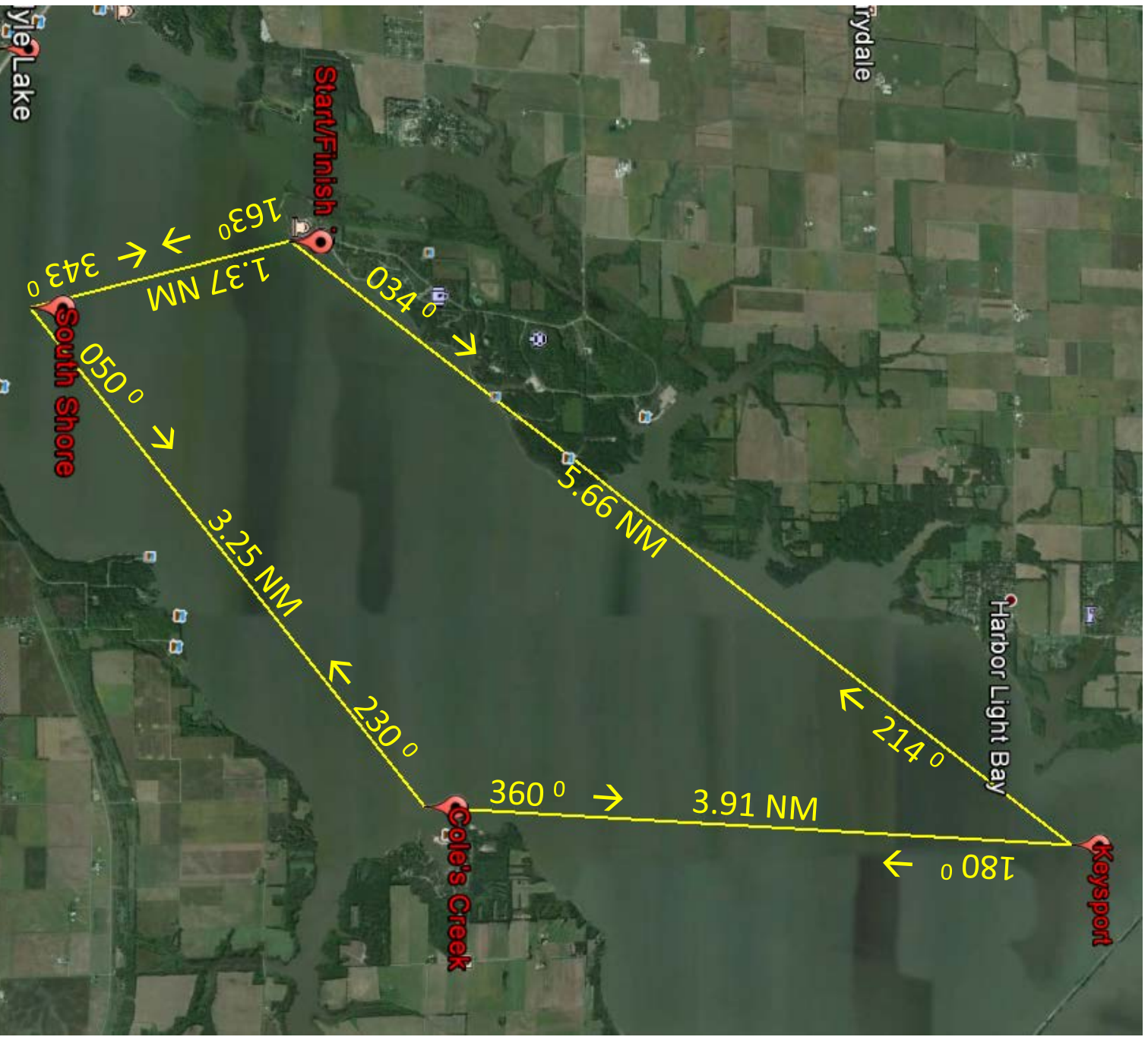


## Appendix A

### Whale of a Sail 2016 Distance Course "A" 14.19 NM



Course Announcement at the Skippers Meeting – Sail the

course Clockwise or Counter Clockwise

Channel 69

Start/Finish: N 38-38.52'; W 089-20.07'

Keysport: N 38-43.14'; W 089-15.90'

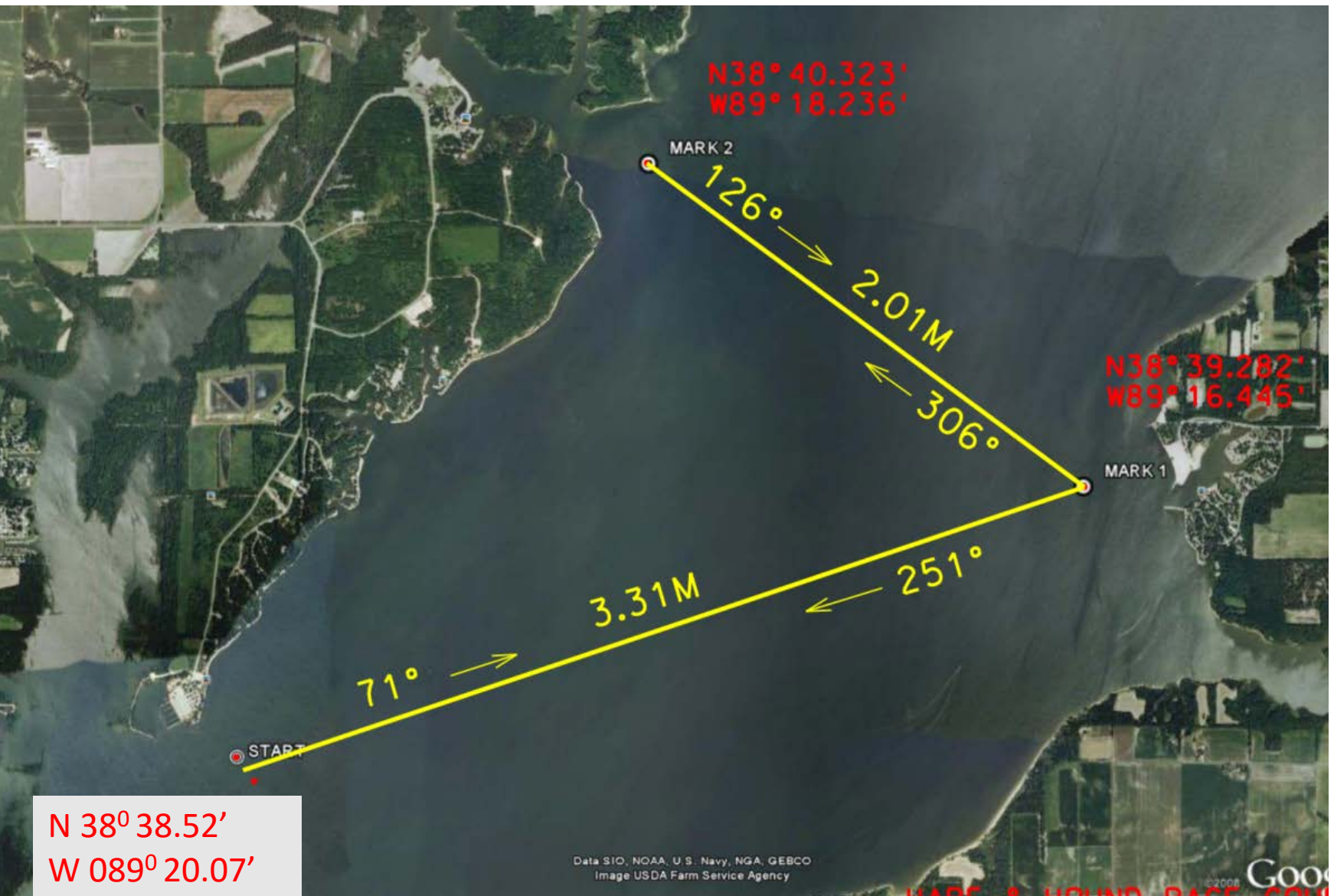
Coles Creek: N38-39.23'; W 089-16.26'

South Shore: N38-37.22'; W 089-19.52'

## Appendix A

### Whale of a Sail 2016 Distance Course "B"

10.64 NM



Course Announcement at the Skippers Meeting

Course "B" is Start – Mark 1, Mark 2, Mark 1, Finish

Channel 69