

Big Dinghy Regatta

April 9th and 10th, 2016

Richmond Yacht Club

SAILING INSTRUCTIONS

1 RULES

- 1.1 The regatta will be governed by the rules as defined in *The Racing Rules of Sailing*.
- 1.2 Rule 40 is changed as follows: "Competitors are required to wear a PFD while racing". Wet suits or dry suits are requested by sailors under 18 years of age.

2 NOTICES TO COMPETITORS

Notices to competitors will be posted on the Official Notice Board located on the left side of the front entrance to the tent.

3 CHANGES TO SAILING INSTRUCTIONS

- 3.1 Any change to the sailing instructions will be posted before 0900 on the day it will take effect, except that any change to the schedule of races will be posted by 2000 on the day before it will take effect.
- 3.2 Starting times for the Sunday pursuit race will be posted online and on the RYC Official Notice Board on Saturday, April 9th 1700. Copies of the pursuit race start times may also be available at the competitors meeting .

4 SIGNALS MADE ASHORE

- 4.1 Signals made ashore will be displayed on the signal boat Pelican.
- 4.2 When flag AP is displayed ashore, '1 minute' is replaced with 'not less than 60 minutes' in the race signal AP.

5 SCHEDULE OF RACES:

5.1 Saturday April 9, 2016

Course Areas #1 & #2

Competitors meeting :	1000	in tent
First warning	1200	
Races 2-4:		shortly after previous race

Sunday April 10, 2016

Pursuit race

Competitors meeting: 1000 in tent
First warning short course: 1125
First warning long course: 1155

5.2 Starting Sequence for: Saturday April 9, 2016

See Attachments A & B

5.3 On Saturday April 9, 2016 no warning signal will be made after 1600.

6 CLASS FLAGS

Class flags will be: see Attachments A & B

7 RACING AREAS

Saturday Course #1- South Hampton, Course #2 – Marina Bay
Attachment E & F shows the location of racing areas for the Sunday Pursuit Race.

8 THE COURSES

8.1 The diagrams in Attachment C & D show the courses, the order in which marks are to be passed, and the side on which each mark is to be left.

8.2 The Sunday Pursuit race start and finish for both the Long and Short Course will be between the RYC Platform and a red ball.

8.3 See Attachments E, & F for course descriptions

9 MARKS

9.1 Marks are described in Attachment A & B for Description of Marks.

10 AREAS THAT ARE RESTRICTED

10.1 The following areas are designated restricted: start and finish lines on both Saturday and Sunday.

10.2 The area within 200 yards of Chevron Long Wharf in any direction is restricted.

10.3 The area marked by a yellow marks on the north/northeast side of Brooks Island.

11 THE START

11.2 Rule 26 is changed as follows: Races shall be started by using the following signals. Times shall be taken from the visual signals; the absence of a sound signal shall be disregarded.

<i>Minutes before starting signal</i>	<i>Visual signal</i>	<i>Sound signal</i>	<i>Means</i>
3	Class flag	One	Warning signal
2	P, I, Z, Z with I, or black flag	One	Preparatory signal
1	Preparatory flag removed	One long	One minute
0	Class flag removed	One	Starting signal

The warning signal for each succeeding class shall be made after the starting signal of the preceding class.

- 11.2 The starting line will be between a staff displaying an orange flag on the signal boat and a small red mark/can. See attachments C & D.
- 11.3 Boats whose warning signal has not been made shall avoid the starting area during the starting sequence for other races.
- 11.4 A boat starting later than 3 minutes after her starting signal will be scored "Did Not Start" without a hearing. This changes rule A4.
- 11.5 For the Sunday Pursuit Race the initial start will be in accordance with Rule 26. The warning Flag will be Jolly Roger flag and will remain hoisted until the last start. The race committee will use GPS time.
- 11.6 For the Sunday Pursuit Race the starting line will be between a staff displaying an orange flag on the RYC platform on the breakwater and a red mark.
- 11.7 For the Sunday Pursuit Race after the first start signal a sound will be made every minute on the minute regardless of whether a boat is starting at that time. The failure of the race committee to make a sound or failure of a boat to hear it will not be grounds for redress. This changes Rule 62.1 (a)
- 11.8 For the Sunday Pursuit Race there will be a starting penalty of 5 percent of total score unless penalty is cleared. The X flag will be displayed until next start (1 minute) or penalty is cleared whichever is earlier. No sound signal will be made. This changes Rule 29.1.
- 11.9 For the Sunday Pursuit Race a boat starting later than 10 minutes after her starting signal shall be scored "Did Not Start" without a hearing. This changes Rules 35, A4, & A5.

12 COMMUNICATION

Except in an emergency, a boat shall neither make radio transmission while racing nor receive radio communications not available to all boats. This restriction also applies to mobile telephones.

13 THE FINISH

- 13.1 For the Saturday Buoy Race the finishing line will be between a staff displaying blue flags on the port side of the signal boat and a red mark on course side of the starboard end.
- 13.2 For the Sunday Pursuit Race the finish will be between a staff displaying an orange flag on the RYC platform and the finishing mark (red can or ball).

14 TIME LIMITS

- 14.1 On Saturday racing the first boat in each fleet shall finish within 1 hour of their start. A boat failing to do so will be scored "Did Not Finish" without a hearing. This changes rules 35, A4 and A5.
- 14.2 On Saturday boats failing to finish within 20 minutes after the first boat sails the course and finishes will be scored "Did Not Finish" without a hearing. This changes rules 35, A4 and A5.
- 14.3 During Sunday Pursuit race any boat not finishing before 1700 will be scored "Did Not Finish" without a hearing. This changes rules 35, A4 and A5.

15 PROTESTS AND REQUESTS FOR REDRESS

- 15.1** Protest forms are available at the regatta desk located next to the Official Notice Board in the tent. Protests and requests for redress or reopening shall be delivered there within 30 minutes after Race Committee Signal boat returns to the dock. The return will be posted on the Official Notice Board.
- 15.2** Notices will be posted no later than 20 minutes after the protest time limit to inform competitors of hearings in which they are parties or named as witnesses.
- 15.3** Protests will be heard in the approximate order they were received.
- 15.4** In addition to complying with the rules for filing a protest, a boat shall inform the Race Committee at the finish of their intention to protest and to whom they are protesting.

16 SCORING

- 16.1** On Saturday's buoy racing, each boat's series score is the total of her races. There will be no throw outs. This changes Rule A2.
- 16.2** On Saturday, 1 race is required to be completed to constitute a series.
- 16.3** On Sunday's Pursuit Race a reverse handicap will be used to start. All boats will be scored in the order of finish. Start times are calculated using the Big Dinghy Handicap Rating.

17 SAFETY REGULATIONS

- 17.1** All boats shall carry a 30 ft. towline, attached to the bow or mast for towing or to assist in boat recovery.
- 17.2** A boat that retires from a race shall notify the race committee before leaving the race area, or as soon as possible after arriving ashore.
- 17.3** Prior to the first race each day, boats are shall sail past the stern of the Race Committee Signal boat to check in or the RYC Platform and hail her number for r recognition.

18 REPLACEMENT/SUBSTITUTION OF SAIL NUMBERS

- 18.1** All changes to sail numbers shall be made by the competitor on-line before the close of registration.

19 PRIZES

Prizes will be given as follows: On Saturday Buoy Racing, Fleets with more than 5 boats will receive a prize for 1st, 2nd, & 3rd finishes. Fleets with 5 or fewer boats will receive a prize for 1st and 2nd finish.

For the Sunday Pursuit Race, both long and short course finishers will receive a prize for 1st through 5th place finish.

20 DISCLAIMER OF LIABILITY

Competitors participate in the regatta entirely at their own risk. See rule 4, Decision to Race. The organizing authority will not accept any liability for material damage or personal injury or death sustained in conjunction with or prior to, during, or after the regatta.

Attachment A & B

Big Dinghy Regatta (Sailing Instruction 8.0)

April 9-10, 2016

Course Area # 2: Marina Bay Brooks Island



Radio Channel: 75

Day	Host Club	Principal Race Officer
Saturday	Richmond Yacht Club (RYC)	Paul Disario
Course designation: numerical pennant		
Sounds Signal: air compressed horn-ollie box		

MARKS

Start/finish	Reach	Windward/Leeward	Change	Limiting by Brooks Island
cans	Red balls	Red balls		3 Large yellow cones

ORDER OF STARTS FOR THE FIRST RACE FOR EACH DAY

START	CLASS(ES)	CLASS FLAG
1	EI Toro Sr	 E
2	Day Sailor	Class flag Ds
3	open class	 O

Big Dinghy
April 10, 2011
Attachment B

Course # 2

W= weather mark
R= reach mark
L=leeward mark
All marks left to port



Courses:

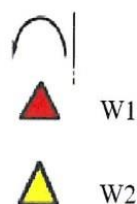
- 1-Start-W-L-Finish
- 2-Start-W-R-L-Finish
- 3-Start-W-L-W-L-Finish
- 4-Start-W-R-L-W-L-Finish
- 5-Start-W-R-L-W-R-L-Finish
- 6-Start- W-L-W-R-L-W-L-Finish

Big Dinghy
April 10, 2011
Attachment C

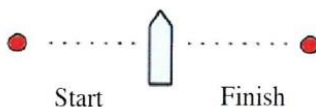
Course # 1

W= weather mark
R= reach mark
L=leeward mark
All marks left to port.

All fleets which have Signal Flag
A displayed at their warning
signal shall use W2 as their
weather mark.



R



L



Courses:

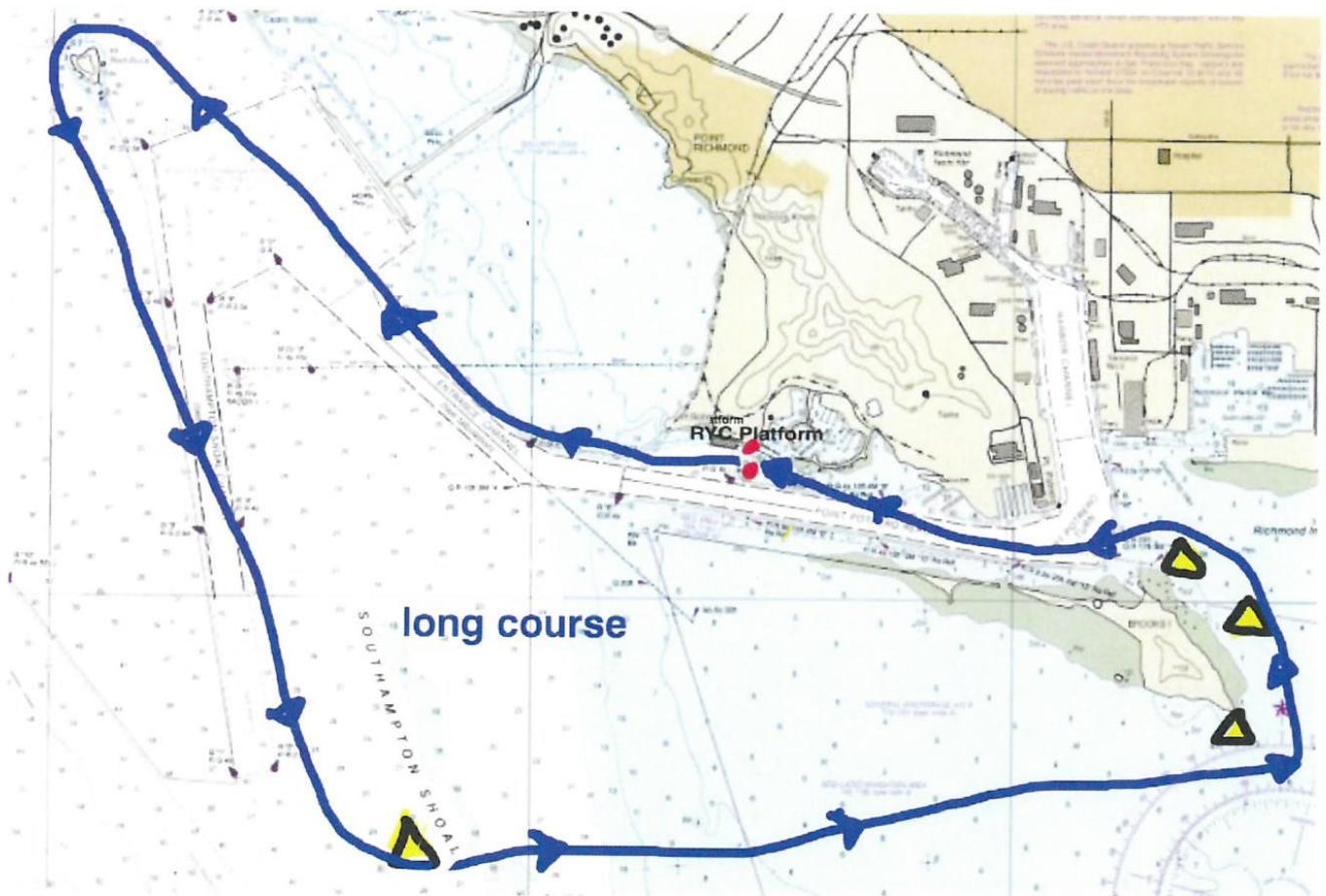
- 1-Start-W-L-Finish
- 2-Start-W-R-L-Finish
- 3-Start-W-L-W-L-Finish
- 4-Start-W-R-L-W-L-Finish
- 5-Start-W-R-L-W-R-L-Finish
- 6-Start- W-L-W-R-L-W-L-Finish

**Attachment E & F
Big Dinghy Regatta
April 9th and 10th, 2016**

Long Course: Start - Sail west out Potrero Channel - Red Rock - South Hampton Shoals, -Brooks Island-Finish. All marks to port.

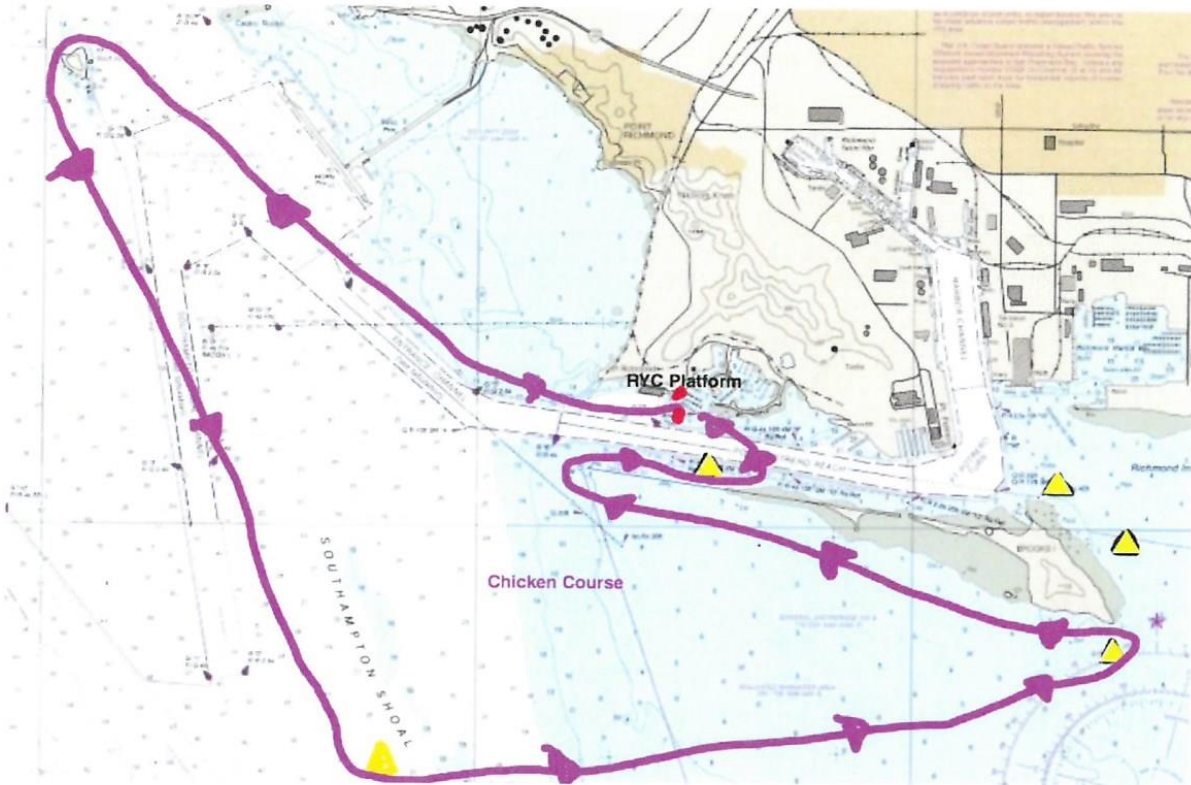
Chicken Course: Start -Sail west out Potrero Channel -Red Rock (port) -South Hampton Shoals (port) - #1 Yellow mark @' South end of Brooks Island (port))- Potrero Channel Breakwater (starboard),- #2 yellow mark (east of finish line) (port)-Finish

Short Course: Start- Sail West out Potrero Channel-Brooks Island - Finish. All marks to port.

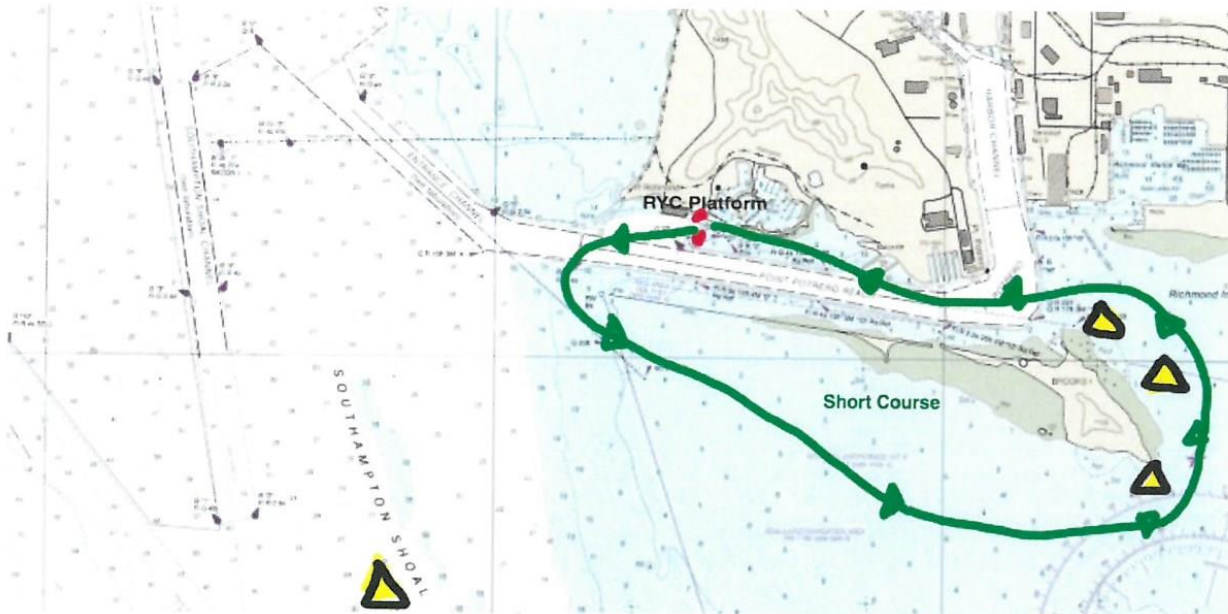


Attachment E & F
Big Dinghy Regatta
April 9th and 10th, 2016

Chicken Course:



Short Course:



Start time calculator for pursuit races

Long Course = Red Rock, Southampton, Brooks Island - counterclockwise

or chicken route = round mark at East end of Brooks Island and back to Channel on South side of Brooks Island

Course Length= 13.5 nautical miles

First Warning 11:55:00 AM

Boat Class (slowest boat first)	Big Dinghy Rating	Equivalent PHRF	Start time US sailing Portsmouth (hr:min)	
FJ	98	258	12:00 PM	98
Force 5	95.4	242	12:04 PM	95.4
Laser	94.5	237	12:05 PM	91.1
Coronado 15	93.2	229	12:06 PM	91.9
Vareo	92.7	226	12:07 PM	92.7
Banchee	92	222	12:08 PM	93.7
Vanguard 15	92	222	12:08 PM	90.8
Hoot	90.9	215	12:10 PM	
Wing Dinghy	90.9	215	12:10 PM	
Contender	90.4	212	12:10 PM	90.1
Finn	90.1	211	12:11 PM	90.1
Lightning	90	210	12:11 PM	87.1
Int. 110	89.3	206	12:12 PM	89.3
Johnson 18 = Darley	86.4	188	12:16 PM	86.4
Osprey	84.8	179	12:18 PM	
29er	84.5	177	12:18 PM	85.1
Johnson 18 - Briner	84	174	12:19 PM	86.4
Thistle	84	174	12:19 PM	83
WylieCat 17	83	168	12:20 PM	
Musto Skiff	83	168	12:20 PM	80
Swift Solo	83.5	171	12:20 PM	
FD	80.1	151	12:24 PM	80.1
Moth	80	150	12:24 PM	107.1
Randar K6	79.8	149	12:25 PM	
Wylie Wabbit	79	144	12:26 PM	
Wetta	79	144	12:26 PM	
5-0-5	77.5	135	12:28 PM	79.9
RS800	77	132	12:28 PM	77
Int. Canoe	77	132	12:28 PM	79.1
Bennett VX One	77	132	12:28 PM	
Nacra 5.8	66.6	70	12:42 PM	66.4
Int. 14	66	66	12:43 PM	85.4
Hobbie 20	65	60	12:45 PM	65
Prindle 19	64.4	56	12:45 PM	64.4
49er	64	54	12:46 PM	68.8
Moth foiling	63	48	12:47 PM	
Tiger	62	42	12:49 PM	62
18 skiff	59	24	12:53 PM	

Short Course = Around Brooks Island - counterclockwise
 Course Length= 4.7 nautical miles
 First Warning 11:25:00 AM

Boat Class (slowest boat first)	Big Dinghy Rating	Equivalent PHRF	Start time US Sailing Portsmouth (hr:min)	
Dewitt	128	438	11:30 AM	123.6
Opti	128	438	11:30 AM	123.6
El Toro	126.6	430	11:31 AM	126.6
Col. FJ	102.5	285	11:42 AM	102.5
Lido 14	98.9	263	11:44 AM	98.9
FJ	98	258	11:44 AM	98
Laser Radial	96.7	250	11:45 AM	96.7
Byte	96	246	11:45 AM	91.4
chryoier Mutineer 15	96	246	11:45 AM	
Sunfish	94.7	238	11:46 AM	99.6
420	93	228	11:46 AM	97.6
Laser	92	222	11:47 AM	91.1
Megabyte	90.7	214	11:48 AM	90.7
Snipe	90	210	11:48 AM	92
Day Sailor	90	210	11:48 AM	98.6