

# **TRED AVON YACHT CLUB**

## **Shields Class**

### **2016 Fall Series**

## **SAILING INSTRUCTIONS**

### **1. RULES**

- 1.1 The regatta will be governed by the *Racing Rules of Sailing 2013-2016 (RRS)* and the *Shields Class Sailing Association Rules*.
- 1.2 In the event of conflict between the *Notice of Race* and the *Sailing Instructions*, the *Sailing Instructions* take precedence. This modifies RRS 63.7.

### **2. NOTICES TO COMPETITORS**

- 2.1 Notices to competitors will be posted on the Shields Notice Board located on the first floor of the Tred Avon Yacht Club.

### **3. CHANGES IN THE SAILING INSTRUCTIONS**

- 3.1 Changes to the *Sailing Instructions* will be posted before 1200 on the day they will take effect, except that any change to the schedule of races will be posted before 2000 on the day before it will take effect.
- 3.2 Oral changes to the *Sailing Instructions* made on the water shall be communicated to each boat with an acknowledgement from the boat.

### **4. SIGNALS MADE ASHORE**

- 4.1 Signals made ashore will be displayed from the yardarm at Tred Avon Yacht Club.
- 4.2 When Flag “AP” is displayed ashore, “1 minute” is replaced with “not less than 60 minutes” in Race Signal AP.

### **5. SCHEDULE OF RACES**

September 18<sup>th</sup>, 25<sup>th</sup>; Oct 2<sup>nd</sup>. First Warning 1325.

- 5.1 The warning signal for each succeeding race will be made as soon as possible after completion of the prior race.
- 5.2 No race shall start after 1700.

### **6. RACING AREAS**

- 6.1 Racing will be held in the Tred Avon River or on the Choptank River, SW of the Choptank River Light.

### **7. CLASS FLAG**

- 7.1 The Class Flag will be a Shields insignia on a white background or as otherwise designated by the Race Committee.

## **8. COURSES**

- 8.1. The attached diagrams (Shields Courses) show courses 2 through 6, the order in which marks are passed and how marks are to be passed.
- 8.2. No later than the warning signal, the RC signal boat will display the course number, the approximate magnetic bearing and distance in nautical miles to the weather mark (Mark 1) on a white board.
- 8.3. Marks 1 and 1a shall be rounded to port. Mark 1 is the windward mark. Mark 1a is an offset mark which, if set, will be positioned to port eight or more boat lengths from Mark 1.
- 8.4. Mark 2 may be a gate or a single mark. For courses 3, 4, 5, & 6 Mark 2 is not a mark of the course for the first or final leg.
- 8.5. When there is a gate, boats shall sail between the gate marks from the direction of the previous mark and round either gate mark. Except when there is a change of course, the gate or single leeward mark will be positioned to windward of the RC signal boat.
- 8.6. If only one leeward mark is set, boats shall round that mark to port.
- 8.7. At the race committee's discretion, the start/finish pin may be designated as the leeward mark in place of Mark 2, and in that event shall be rounded to port.
- 8.8. In the event of a shortened course, the finish shall be crossed from the direction of the previous mark (this changes RRS 32.2):
  - (a) at a rounding mark, between the mark and a staff displaying flag S.
  - (b) at a line boats are required to cross at the end of each lap, that line;
  - (c) at a gate, between the gate marks.

## **9. MARKS**

- 9.1. The windward mark (Mark 1) is an orange tetrahedron. The offset mark (Mark 1a) will be a small orange sphere.
- 9.2. Gate marks or a single leeward mark (Mark 2) will be orange tetrahedrons.
- 9.3. The leeward mark or gate marks will be set about 50 - 100 yards to windward of the RC signal boat, unless the start/finish mark is designated as the leeward mark.
- 9.4. The start/finish mark will be an orange tetrahedron.
- 9.5. If a standoff mark is attached to the Signal Boat it shall be considered part of the boat.

## **10. THE START**

- 10.1. Races will be started using *RRS 26* with the warning signal made 5 minutes before the starting signal. A series of short sounds may be used to alert competitors of the Race Committee's intention to sound the warning signal.
- 10.2. The starting line will be between an orange flag on the RC signal boat and an orange tetrahedron to port.
- 10.3. A boat starting later than 10 minutes after her starting signal will be scored "DNS" without a hearing. This changes *RRS A4* and *A5*
- 10.4. The race committee will attempt to hail OCS boats on Ch 71 VHF.
- 10.5. Failure to hail, the hail of some but not all OCS boats, the order in which or untimely hailing of boats shall not be grounds for redress. This changes *RRS 62.1(a)*.

## **11. THE FINISH**

- 11.1. The finishing line for even numbered courses (downwind finish) will be between an orange flag on the RC signal boat and the nearby orange tetrahedron.
- 11.2. The finishing line for odd numbered courses (upwind finish) will be between an orange flag on a race committee boat and Mark 1 to port.

## **12. RADIO COMMUNICATIONS**

- 12.1. Except in an emergency, a boat shall neither make radio transmissions nor receive radio communications not available to all boats. This restriction also applies to cell phones.
- 12.2. The Race Committee intends to use Ch 71 to supplement signaled information to all boats.
- 12.3. Competitors are responsible for having a functioning VHF radio aboard and operating on Ch 71.

## **13. TIME LIMIT**

- 13.1. The time limit for the first boat to finish will be two hours.
- 13.2. Boats failing to finish within 30 minutes after the first boat sails the course and finishes will be scored "DNF" without a hearing. This changes *RRS* 35, A4 and A5.

## **14. PROTESTS AND REQUESTS FOR REDRESS**

- 14.1. A boat intending to protest must notify the race committee of its intention and the identity of the protested boat(s) as soon as possible after finishing the contested race and be acknowledged by the race committee.
- 14.2. Protest forms will be available at the Tred Avon Yacht Club. Completed protests shall be delivered to the Protest Committee as soon as possible but not later than two hours after the committee boat has docked. The RC signal boat docking time will be posted on the Shields Notice Board.
- 14.3. A list of protests received will be posted as soon as possible indicating the time and order in which the protests will be heard.
- 14.4. Representatives of the boats who are parties to a hearing and their witnesses shall remain in the vicinity of the TAYC Protest Hearing Room.

## **15. SCORING**

- 15.1. The Low Point Scoring System of Appendix A will apply.
- 15.2. One completed race will constitute the series.
- 15.3. If fewer than five races are completed, a boat's score will be the total of her race scores. If five or more races are completed, a boat's score shall be the total of her race scores excluding her worst score, subject to rule 90.3(b).

## **16. SAFETY**

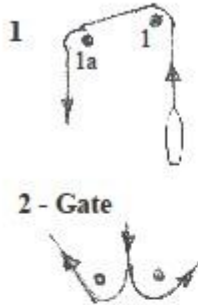
- 16.1. Competitors are strongly encouraged to wear a USCG approved PFD while racing.
- 16.2. Boats retiring from racing are requested to notify the Race Committee on Ch 71

## **17. PRIZES**

- 17.1. Trophies will be awarded for 1<sup>st</sup>, 2<sup>nd</sup> and 3<sup>rd</sup> place in the series.

# Shields Courses

## Marks



### Course 2

START-1-1a-FINISH



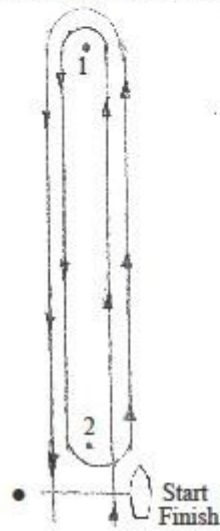
### Course 3

START-1-1a-2-FINISH



### Course 4

START-1-1a-2-1-1a-FINISH



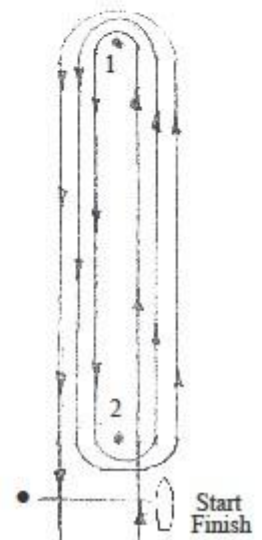
### Course 5

START-1-1a-2-1-1a-2-FINISH



### Course 6

START-1-1a-2-1-1a-2-1-1a-FINISH



!