

EYC Boomerang Race

Saturday, 09 July 2016

ORGANIZING AUTHORITY
Eastport Yacht Club



SAILING INSTRUCTIONS

With Amendment No. 1

1 RULES

- 1.1 Racing will be governed by the rules as defined in the current *Racing Rules of Sailing* (RRS).
- 1.2 From sunset to sunrise, when two (2) boats on the same tack are within three (3) boat lengths (measured by the longer boat), the boat clear ahead may not sail above her proper course, and the boat clear astern, if she elects to pass to windward, must do so at least two (2) boat lengths above the leeward boat. This changes RRS 17.

2 ENTRIES

- 2.1 The regatta is open to all competitors who register with the organizing authority and pay the entry fee prior to 1200 hours on Thursday, 07 July 2016.
- 2.2 Participants competing in a handicap class shall have a valid 2016 rating certificate.

3 NOTICES TO COMPETITORS

Notices to Competitors shall be posted on the Official Notice Board located outside, near the ground floor rear entryway doors and "Sparky's Shed" on the EYC grounds, and posted as a courtesy on the EYC website: <http://eastportyc.org/boomerang>.

4 CHANGES TO SAILING INSTRUCTIONS

Any changes in the SIs shall be posted before 2000 hours on Friday, 08 July 2016.

5 SIGNALS MADE ASHORE

- 5.1 Signals made ashore before the race start shall be displayed from the EYC flagpole, located on the waterside of the clubhouse. The Race Committee (RC) may announce signals posted ashore on VHF channel 73, and/or text message, and/or email. This announcement, lack thereof or contents thereof shall not be grounds for Redress or Protest.
- 5.2 When flag AP is displayed ashore, "1 minute" is replaced with "not less than 60 minutes" in race signal AP. This changes RRS Signals.

6 SCHEDULE

The schedule of events is:

| | | |
|--------------|-----------|--------------------------------|
| Thu, 07 July | 1200 | Registration closes |
| Fri, 08 July | 2000 | Classes start order posted |
| Sat, 09 July | 1815 | Check-In boat on station |
| | 1845 | Warning signal for first class |
| Sun, 10 July | 0600-1200 | Post-race reception at EYC |
| | 1200 | Race time limit |
| | 1200-1600 | Awards party at EYC |

7 CLASS FLAGS – ORDER OF START

- 7.1 It is the intention of the RC to give the first Warning signal at 1845 hours. The start order and class flags/pennants are presented in Attachment A.
- 7.2 All competing boats shall fly class flags as specified in CBYRA Green Book General SI 4, or as noted in the SI Amendment cited in SI 7.1.

8 RACING AREA

The racing area shall be on the Severn River and Chesapeake Bay, between the Chesapeake Bay Bridge and Cove Point.

9 MANDATORY CHECK-IN

- 9.1 The RC shall use a separate check-in boat. The boat shall fly a solid yellow flag and shall be located approximately 0.2 nm SE of Triton Light off the US Naval Academy seawall.
- 9.2 Each boat shall pass close astern of the check-in boat and hail her sail number until acknowledged by a return hail from the check-in boat.
- 9.3 RC shall protest any boat that finishes the race but fails to complete the check-in process, per SI 9.2.

10 COURSES

- 10.1 The Race Committee intends to designate a course that is commensurate with the predicted conditions. The **WHITE** course will be selected when conditions support a longer race distance; the **RED** course will be selected when conditions support a shorter race distance.
- 10.2 The designated course will be identified on a board displayed on the check-in boat. The board will state either "**WHITE**" or "**RED**" to indicate which course shall be sailed. The Signal Boat will also attempt to repeatedly state the course designation on VHF channel 73 during the start sequences.
- 10.3 The failure of any boat to see the course board or hear the VHF broadcasts shall not be grounds for granting redress. This changes RRS 41 and 62.1.
- 10.4 Course diagrams and descriptions are provided in the figures, as noted in the following table.

| Course Designation for Each Class | Multihull A, PHRF A0, PHRF A1, PHRF A2, and J/35 Classes | Multihull B, J/105, PHRF B, J/30, Alberg 30, CRCA Performance Cruiser, and CRCA Cruiser Classes |
|-----------------------------------|--|---|
| WHITE | Figure 1, LONG COURSE | Figure 2, MEDIUM COURSE |
| RED | Figure 2, MEDIUM COURSE | Figure 3, SHORT COURSE |

11 THE START

- 11.1 Races shall be started using RRS 26. No Warning signal shall be made prior to 1845 hours.
- 11.2 The starting line shall be between a staff displaying an orange flag on the starboard end RC Signal Boat, and the course side of Severn River lighted buoy "G9 Q G."
- 11.3 A boat whose preparatory signal has not been made shall not come within one hundred fifty (150) yards of the starting line.
- 11.4 A boat starting more than ten (10) minutes after the starting signal of the last class shall be scored Did Not Start (DNS). This changes RRS A4.

12 RECALLS

- 12.1 The Race Committee intends to hail the sail numbers of On Course Side (OCS) boats on VHF channel 73. The failure of any boat to hear the hail, the content of the hail, and/or the order of the boats in the hail shall not be grounds for granting redress. This changes RRS 41 and RRS 62.1.
- 12.2 If a general recall is made, classes which have not been recalled shall be started as though the recall(s) had not been made. This modifies RRS 29.2.
- 12.3 Recalled classes shall start in the order they were recalled, after the last scheduled start.

13 THE FINISH

- 13.1 The Finish Line shall be between a staff displaying an orange flag on the RC Finish Boat and the course side of Severn River lighted buoy "G9 Q G."
- 13.2 The RC Finish Boat expects to be on station on the southwest side of Severn River lighted buoy "G9 Q G" from the Start on Saturday, 09 July 2016, until 1200 hours on Sunday, 10 July 2016, or all competitors have finished or withdrawn, whichever occurs first.
- 13.3 When finishing before sunrise, boats shall illuminate their sail numbers within two hundred (200) yards of the finish line, until two hundred (200) yards past the finish line.
- 13.4 If the RC Finish Boat is not on station, a boat shall take its finish time when it passes Severn River lighted buoy "G9 Q G" within one hundred (100) yards and the mark bears 065° degrees magnetic. Boats recording their own finish shall report their finish time to the RC as soon as practical after finishing by contacting the Principal Race Officer (PRO) by leaving a message on the EYC Hotline at (410) 263-0415, extension 3.

14 PENALTY SYSTEM

RRS 44.3 shall apply, as modified below.

- (a) RRS 44.3(a) is changed to allow flag "I" to be substituted for the yellow flag.
- (b) RRS 44.3(b) is changed to also require a competitor to inform the RC by hailing on VHF channel 73 until acknowledged by the RC.
- (c) RRS 44.3(c) is changed to provide a 40% scoring penalty.

15 TIME LIMIT

- 15.1 The time limit is 1200 hours on Sunday, 10 July 2016.
- 15.2 Boats failing to finish within the time limit shall be scored Did Not Finish.

16 PROTESTS AND REQUESTS FOR REDRESS

- 16.1 RRS/US Appendix T, Section D (Arbitration), shall apply.
- 16.2 A boat intending to protest a boat for an incident that occurs in the racing area shall notify the RC finish boat of her intention either by hail or by radio on VHF channel 73. She shall include the sail number of the boat(s) being protested. This changes RRS 61.1(a).
- 16.3 Protests shall be filed with the Protest Secretary at the EYC Conference Room (located inside the EYC Clubhouse on the ground floor), prior to 1300 hours on Sunday, 10 July 2016, or sixty (60) minutes after the RC docks, whichever is earlier. Requests for redress regarding incidents in the racing area shall be delivered within the protest time limit. This changes RRS 62.2.
- 16.4 Notices of hearing shall be posted no later than thirty (30) minutes after the protest time limit to inform competitors of hearings in which they are parties or named as witnesses.
- 16.5 Breaches of SIs 9, 17, 19, 20, and 22 will not be grounds for a protest by a boat. This changes RRS 60.1(a). Penalties for these breaches may be less than disqualification if the jury so decides.
- 16.6 Hearings shall start as soon as possible after protests have been filed on Sunday, 10 July 2016, at EYC. The Protest Committee will attempt to hear protests in the order of receipt by the Protest Secretary. Representatives of boats who are parties to a hearing shall remain on call in the vicinity of the protest room.
- 16.7 When the RC protests a boat, the requirements of RRS 61.1(b) to notify the boat may be met by posting a list of protested boats on the Official Notice Board before the end of the protest time limit.

17 SAFETY

- 17.1 All equipment required by the US Coast Guard, the RRS, these SIs, and the respective class rules, shall be aboard, readily available, and in working order. The RC has the right to inspect, without notice, any boat for the required equipment.
- 17.2 It is recommended that all boats meet the current ISAF Recommendations for Offshore Sailing including Offshore Racing Council Special Regulations for Category 4, as amended.
- 17.3 In the interest of overall event safety, and consistent with best practices, boats that have checked in as starters and subsequently withdrawn prior to finishing shall notify the PRO as soon as practical on VHF channel 73 or by phone on the EYC Hotline at (410) 263-0415, extension 3. A voicemail message shall include the approximate time of the call, the skipper's name, boat name, sail number, and class.
- 17.4 A boat may not exercise right of way, cross in proximity to, or interfere with reasonable transit of the race area by commercial ships, tugs, or barges. Boats must take evasive action well in advance of a potentially dangerous situation. The US Coast Guard, ship captains, and bay pilots have been encouraged to report any incident(s) they observe.
- 17.5 The Race Committee or Protest Committee may protest a boat for SI 17.4 based on information received from any source. The protest time limit does not apply. This changes RRS 60.2, 60.3, and RRS 61.3.
- 17.6 RRS 42.3 (Propulsion - Exceptions) is changed by adding: "(j) A boat that is without way in a ship channel may use any means of propulsion to clear the channel at the approach of commercial traffic provided that, when becoming clear of the commercial traffic, the boat has not improved their position as a result of this action. A boat claiming this exception shall report the incident in writing to the protest committee within the protest time limit, with all the facts necessary to substantiate the boat's speed and change of position during the incident."
- 17.7 RRS 62.1 (Redress) is changed by adding: "(e) clearing a ship channel in compliance with SI 17.6."
- 17.8 A boat racing between sunset and sunrise that is in close proximity to other vessels shall illuminate her sails so that she is clearly visible. This requirement is in addition to the navigation lights and shapes required by the Inland Rules and other applicable government regulations.

18 SCORING

RRS Appendix A4, Low Point System, shall apply.

19 RADIO COMMUNICATION

19.1 RC shall communicate with competitors on VHF channel 73.

19.2 Boats are encouraged to make contact with commercial traffic on VHF channel(s) 13 and/or 16, as required for safety.

20 DISPOSAL OF TRASH

This is a Clean Race. All competitors are strongly encouraged to use multi-use water bottles instead of disposable water bottles, and to recycle whenever possible. RRS 55 prohibits placing trash in the water.

21 DISCLAIMER OF LIABILITY

Competitors participate in the EYC Boomerang Race entirely at their own risk; see RRS 4. The Organizing Authority will accept no liability for material damage, personal injury, or death sustained in conjunction with or prior to, during, or after the event.

22 INSURANCE

Each boat shall be insured with valid third party liability insurance with a minimum coverage of \$300,000.

23 SOCIAL

23.1 All activities will be held at the EYC clubhouse after the conclusion of racing. A morning breakfast will be available at no additional cost to competitors, courtesy of Grump's Café. An afternoon meal will be available at no additional cost to competitors, courtesy of the Annapolis Smokehouse & Tavern.

23.2 Water taxi services to/from EYC will be available beginning at 0600 hours via Watermark. Competitors may contact the water taxi either on VHF channel 68 or by phone at (410) 263-0033.

23.3 Prizes in each class shall be given as follows:

1st Place for three (3) or more entries;

2nd Place for six (6) or more entries;

3rd Place for seven (7) or more entries;

4th Place for fifteen (15) or more entries; and,

5th Place for twenty (20) or more entries.

23.4 The Boomerang Trophy shall be presented to the boat with the fastest average speed, based on corrected time (length of course / corrected time).

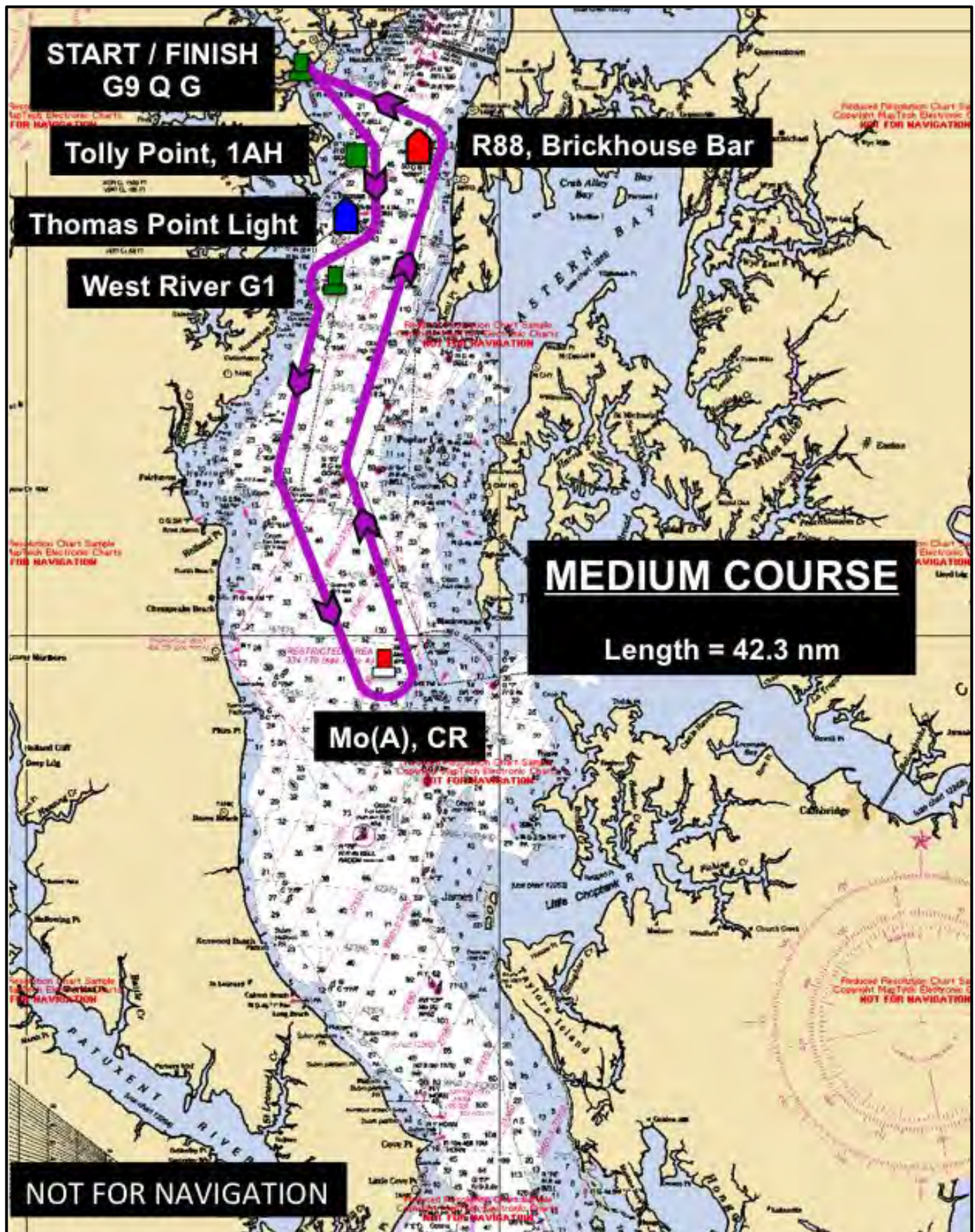
23.5 The F. Peter Weber Trophy shall be awarded to the first boat to cross the finish line, regardless of class or course, provided she is not scored OCS, retires after finishing, or is disqualified by the Protest Committee. In the event the first boat to finish is eliminated from consideration, the award will be presented to the next qualified finisher.

23.6 Beneteau America will award prizes to the top three (3) Beneteaus in the Cruising Class, and the top three (3) Beneteaus from across all Handicap Classes. At the end of the year Beneteau America will award prizes to the overall winners of the Cruising and Handicap Classes.

23.7 Prizes not picked up during the awards party will be available at EYC beginning on Monday, 11 July 2016. Trophies not claimed within thirty (30) days of the race shall be forfeited.

24 ADDITIONAL INFORMATION

Weather forecasting services will be provided by Weather Routing, Inc., beginning on Friday, 08 July 2016.



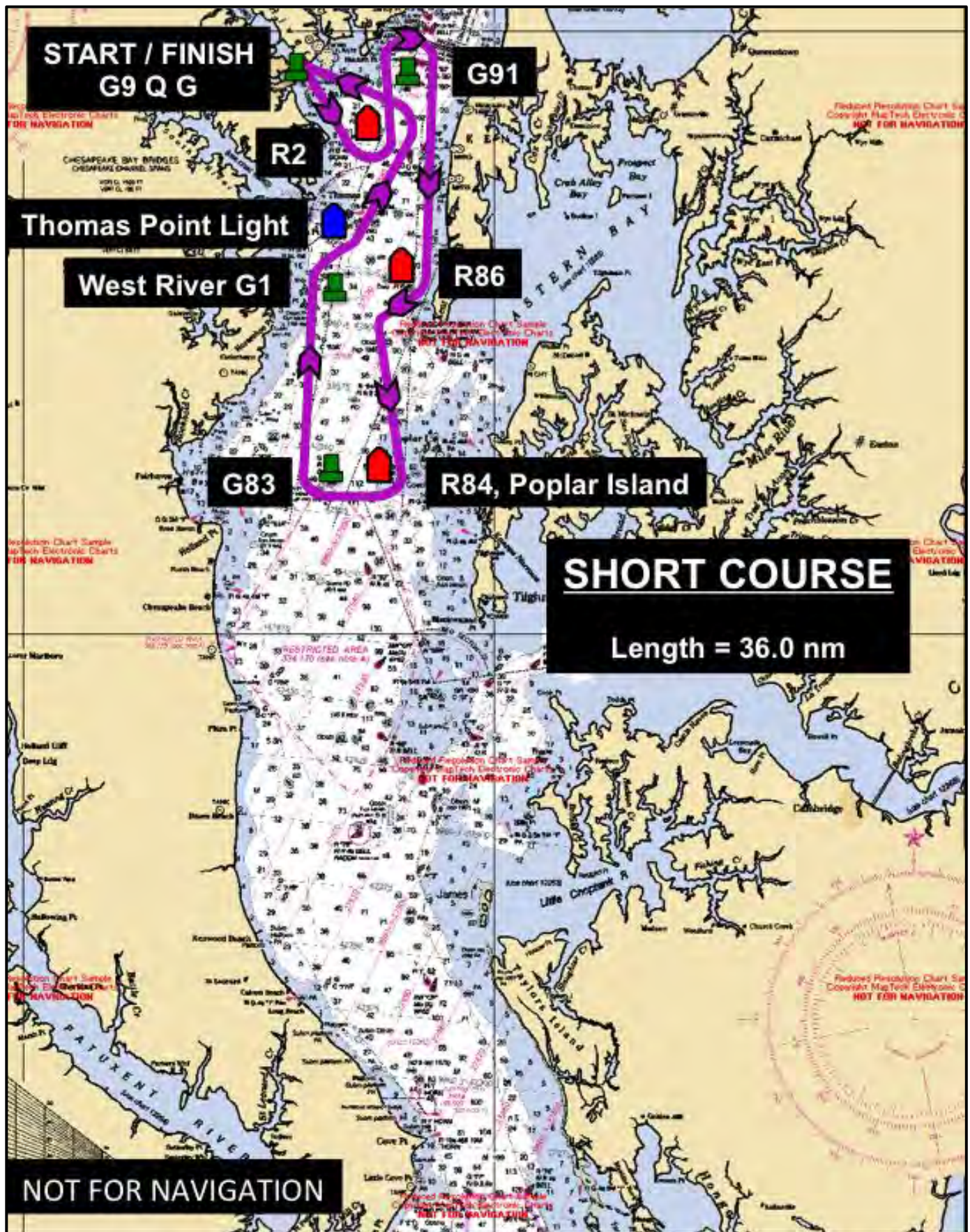


FIGURE 3. Boomerang Race – SHORT COURSE

ATTACHMENT A. Class Start Order and Class Flags/Pennants

| Start No. | Class | Class Flag or Pennant | |
|-----------|--|-----------------------|---|
| 1. | PHRF A0 | Pennant "0" |  |
| | PHRF A1 | Pennant "9" |  |
| 2. | J/35 | Flag "K" |  |
| | PHRF A2 | Pennant "2" |  |
| 3. | Multihull A | Flag "W" |  |
| | Multihull B | Flag "F" |  |
| 4. | J/105 | Flag "V" |  |
| 5. | PHRF B | Pennant "6" |  |
| | J/30 | Flag "D" |  |
| 6. | CRCA Cruiser & CRCA Performance Cruiser | White Flag |  |
| 7. | Alberg 30 | Flag "G" |  |

***We appreciate our event sponsors and encourage
YOU to thank them for their support.***



CHARLIE BUCKLEY'S
Mr. Waterfront® Team
OF LONG AND FOSTER REAL ESTATE

SNAG-A-SLIP