



**US Sailing's Chubb U.S. Junior Sailing Championships  
Area C Qualifier**

**The U.S. Junior Triplehanded Championship for the Sears Cup  
The U.S. Junior Doublehanded Championship for the Bemis Trophy  
The U.S. Junior Singlehanded Championship for the Smythe Trophy  
Organized by US Sailing and Mantoloking Yacht Club**

Hosted by Mantoloking Yacht Club

## **Sailing Instructions**

- 1 - RULES** — The regatta will be governed by the rules as defined in The Racing Rules of Sailing (RRS). The following documents will also apply:
- 1.1 - US Sailing Regulation 2, 10, 13
  - 1.2 - The Conditions for the United States Junior Sailing Championships  
<http://www.ussailing.org/racing/championships/championship-conditions/>
  - 1.3 - The US Sailing Championship Support Vessel Policy  
<http://www.ussailing.org/racing/championships/coaching-and-support-boat-policy/>
  - 1.4 - In case of conflict between the Notice of Race (NOR) and these Sailing Instructions (SIs), the SIs will prevail. In the case of conflicts between these SIs and the Conditions, the Conditions will apply. This changes rule 63.7.
  - 1.5 - Appendix P – Special Procedures for Rule 42 of the rules – will apply to all competitors.
  - 1.6 - Rule 64.1 is changed to allow penalties imposed by the Protest Committee under rule 60.3 to range from a reprimand to a dismissal from the regatta.
- 3 - NOTICES TO COMPETITORS** - will be posted on the Official Regatta Notice Board at the MYC Sailing Center.
- 4 - CHANGES TO SAILING INSTRUCTIONS** — will be posted no later than 0900 on the day it takes effect, except that any change to the schedule of races will be posted no later than the end of the protest time limit on the day before it will take effect or 1700 the day before racing begins.
- 5 - SIGNALS MADE ASHORE** —
- 5.1 – Will be shown from MYC flag pole
  - 5.2 - When flag “AP” is displayed ashore, ‘1 minute’ is replaced with ‘not less than 60 minutes’ in Race Signal “AP”. This changes Race Signal “AP”.
- 6 - SAFETY AND PERSONAL EQUIPMENT** —
- 6.1 - Rule 40 is deleted and replaced with: “All competitors shall wear, while on the water, other than for brief periods while adding or removing clothing, an approved US Coast Guard Type III or Type V PFD that depends 100% on foam for flotation. The PFD must be worn outside all clothing, except that a thin shirt may be worn over the PFD to prevent snagging.” Note that code flag Y will not be displayed. This changes the preamble to Part 4 of the rules and rule 40.
  - 6.2 - Before the warning signal of the first race in which they intend to compete each day, boats shall check in by sailing by, slowly on starboard tack, the stern of the RC signal boat. Each boat shall hail her recall or sail number until acknowledged by the signal boat. Boats failing to comply may be protested by the RC.
  - 6.3 - A boat retiring from a race shall notify any RC boat, coach boat, or safety boat as soon as possible. No boat shall leave the racing area unless accompanied by an RC boat, coach boat or safety boat.
  - 6.4 - The only gear, rigging, or equipment that a team may take aboard a boat shall be: a magnetic card compass, flags, plastic bucket or bailer, normally equipped ditty-bag, personal effects including PFDs and protective clothing. For the



doublehanded fleet (using the C420), permission is granted to bring Fast-Pins with a retaining line, and the competitors are required to bring their own trapeze harnesses.

6.5 - Electronic fluxgate compasses and GPS devices of any and all varieties, styles and combinations are specifically banned.

**7 - SPECIAL SIGNALS —**

7.1 - The display of code flag “A” at the finish of any race means: “Racing has ended for the day and all competitors shall proceed to shore.”

7.2 - For the Triplehanded division only, if code flag “T” is displayed with or before the warning signal, spinnakers shall not be flown during that race.

**8 - SCHEDULE --**

Day1, 12 July	0800 - 0900	Check-in and Continental Breakfast
	0900	Skipper’s Meeting
	0930	Harbor Gun
	1030	First Warning Signal
Day 2, 13 July	0900	Harbor Gun
	1000	First Warning Signal
		No Warning signal for any class after 1600
		Awards after completion of racing

**8 - CLASS FLAGS — will be --**

Singlehanded Division	Laser Class flag
Doublehanded Division	Club 420 Class flag
Triplehanded Division	Lightning Class Flag

**9 - RACING AREAS — see Attachment B**

**10 - THE COURSES — see Attachment A**

10.1 - The diagrams show the courses, the course signals, the order in which marks are to be passed, and the side on which each mark is to be left.

10.2 - No later than the warning signal, the RC signal boat will display the course designation on a board.

10.3 - If a course has a gate, and one of the gate marks is missing, the remaining mark in position shall be rounded to port.

**11 - MARKS —**

11.1 – Marks will be orange, or yellow inflatable marks.

**12 - THE START —**

12.1 - The starting line will be between a staff displaying an orange flag on an RC signal boat and the course side of an inflatable buoy.

12.2 - A boat starting later than 4 minutes after her starting signal will be scored DNS. This changes rules 63.1 and A5.

**13 - THE FINISH —** The finishing line will be between a staff displaying an orange flag on an RC boat and the course side of an inflatable buoy.

**14 - PENALTY SYSTEM —** RRS Appendix P – Special Procedures for Rule 42 – will apply.

**15 - TIME LIMIT —**

15.1 - The time limit for each race will be 75 minutes for the first boat to finish.

15.2 - Boats failing to finish within 15 minutes (the finishing window) after the first boat in its class sails the course and finishes will be scored Time Limit Expired (TLE). The points awarded for boats scored TLE will be the whole number (rounding 0.5 upward) equal to the number of boats starting the race minus 50% of the number of boats scored TLE. This changes rules 35, A4, A5 and A11.

#### **16 - EVENT PROTESTS AND REQUESTS FOR REDRESS —**

16.1 - A boat is not permitted to protest another boat for breaking SI 2, 5.2, 6.2, 6.3, 6.4, 6.5, 19 or 20, 21 or any class rule other than class equipment measurement rules. The penalty for breaking these instructions may be less than disqualification and is at the discretion of the Protest Committee. This changes rule 60.1(a).

16.2 - A boat which is intending to protest about an incident that occurs in the racing area shall notify the RC finish boat of her intention as soon as possible after finishing, including the identification number of the boat(s) she intends to protest, and obtain RC acknowledgement. This requirement is in addition to those of rule 61.1(a).

16.3 - Protest forms will be available at and shall be turned in to the protest desk at the MYC Sailing Center.

16.4 - The protest time limit is 45 minutes after the RC signal boat docks

16.5 - A protest hearing schedule and the location of the hearings will be posted on the Official Notice Board at MYC no later than 15 minutes after the protest time limit to inform competitors of hearings in which they are parties. The location of the hearings will be posted on the Official Notice Board as soon as practical. When all parties are available, hearings may commence before the protest time limit. This is the notice required by rule 63.2.

16.6 - Notice of protests by the race committee or by the protest committee will also be posted on the Official Notice Board at MYC. This is the notice required by rule 63.2.

16.7 - Notice of actions taken by the RC or Protest Committee and a list of boats penalized under Appendix P will be posted on the Official Notice Board at GTYC.

16.8 - On the final day of the regatta, a request for reopening a hearing shall be delivered:

- a) Within the protest time limit if the party requesting the reopening was informed on the previous day.
- b) Within the protest time limit or 30 minutes after the decision is announced, whichever is later. This changes RRS 66.

#### **17 - SCORING —**

17.1 - Three (3) races are required to be completed to constitute a series, with a maximum of 6 races planned

17.2 - When fewer than five (5) races have been completed, a boat's series score shall be the total of her race scores. This changes rule A2.

17.3 - When five (5) or more races have been completed, a boat's series score shall be the total of her race scores excluding her worst score. This changes rule A2.

**18- REPLACEMENT OF CREW OR EQUIPMENT —** Substitution of competitors, or repair or replacement of hulls, sails, or equipment will not be allowed without prior written approval of the Organizing Authority and Protest Committee.

**19 - DISPOSAL OF TRASH —** Boats observed purposefully discharging trash into the water will either be disqualified from all races sailed on the day the infraction is observed or be subject to other suitable disciplinary action, or both at the discretion of the Protest Committee. Trash may be placed aboard support or race committee boats.

#### **20 - COACHING —**

20.1 - This is a Grade 3 Event as defined in the US Sailing Championship Support Vessel Policy. See <http://www.ussailing.org/racing/championships/coaching-and-support-boat-policy/>

A private coach is defined as any coach NOT hired by US Sailing.

20.2 - Except as provided in the Policy specified above, instructors, coaches and other support personnel and family members shall not go afloat in the defined racing area at any time during the clinic or racing days, except in

spectator boats as defined in NOR 13.

20.3 - Outside contact with competitors is prohibited on racing days commencing with the competitor's leaving the dock at the beginning of the day and shall continue until end of protest time on the racing days.

20.4 - Outside contact is defined as a parent, family member, spectator, or coach. Competitors shall not receive advice, instruction, or any type of outside assistance (other than that provided by US Sailing) including electronic communication devices while at the sailing venue during the clinic and racing days. It is the intent of this rule to prohibit contact between competitors and any person, who, in the opinion of the Protest Committee, is a coach, instructor or advisor.

20.5 - The Protest Committee may protest and disqualify a competitor for breaking the rules of NOR 17 from all races on the day of the infringement

## **21 - DISCIPLINE —**

21.1 All competitors are expected to maintain the highest levels of conduct throughout the entire event. Enforcement of discipline and conduct shall be conducted per rule 69.2(a) and the policies and procedures of US Sailing (Regulation 10 and 15.01).

21.2 When the Protest Committee believes that a competitor may have breached the above requirement, it shall follow the process described in racing rule 69.2 and a competitor found to have breached this requirement shall be excluded from the remaining races of the series and, where practicable, removed from the regatta venue and sent home. The competitor's boat shall be disqualified from all races of the series.

## **22 - PRIZES —**

22.1 - US Sailing Championship medals will be awarded to Singlehanded and Doublehanded competitors finishing in the top 3 positions and the top finishing competitors in the Tripplehanded division.

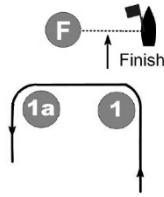
**23—DISCLAIMER OF LIABILITY —** Competitors participate in the regatta entirely at their own risk (see rule 4, Decision to Race). The Organizing Authority and the Host Club shall not accept any liability for material damage or personal injury or death sustained in conjunction with or prior to, during, or after the regatta.

Attachment A- COURSES

Course:

**W3**

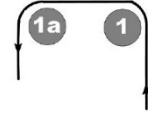
Start-1-1A-  
4S/4P-Finish



Course:

**L4**

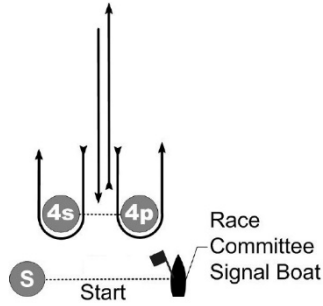
Start-1-1A-  
4S/4P-1-1A-  
Finish



Course:

**W5**

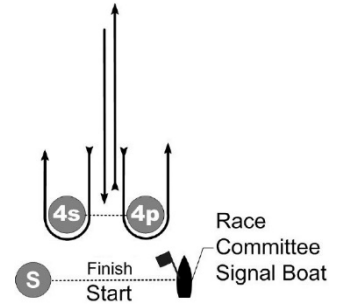
Start-1-1A-  
4S/4P-1-1A-  
4S/4P-Finish



Course:

**L6**

Start-1-1A-  
4S/4P-1-1A-  
4S/4P-1-1A-  
Finish



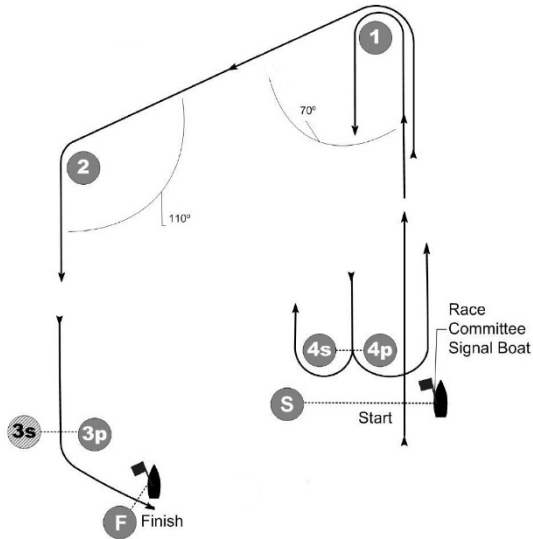
**Inner Trapezoid**

**Outer Trapezoid**

Course:

**I**

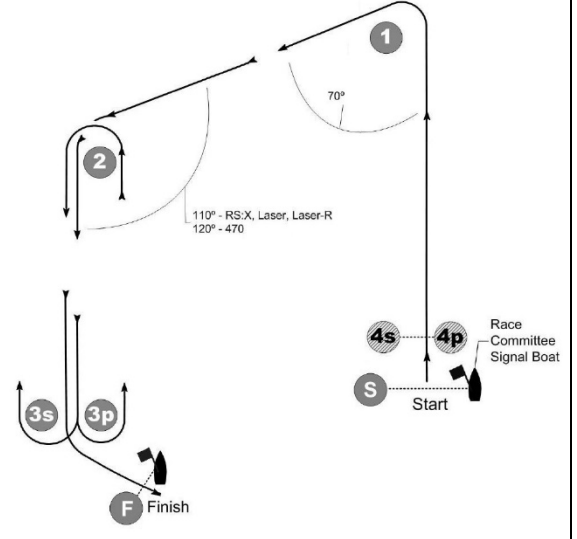
Start-1-  
4S/4P-  
1-2-  
3P-  
Finish



Course:

**O**

Start-1-2-  
3S/3P-2-  
3P-Finish





Attachment B- Sailing Areas

