



Hospice Cup XXXV

Saturday, 17 September 2016

ORGANIZING AUTHORITY
Eastport Yacht Club

Assisted by
Annapolis Yacht Club



GENERAL SAILING INSTRUCTIONS

With Amendment No. 2

1 RULES

Racing will be governed by the *rules* as defined in the current *Racing Rules of Sailing* (RRS).

2 NOTICES TO COMPETITORS

Notices to competitors will be posted on the Official Notice Board located on the waterside at Eastport Yacht Club (EYC).

3 CHANGES TO THE SAILING INSTRUCTIONS

Any change to the Sailing Instructions (SIs) will be posted before 0900 hours on the day of the race, except that any change to the schedule of races will be posted by 2000 hours the day before it will take effect.

4 SIGNALS MADE ASHORE

- 4.1 Signals made ashore will be displayed from the EYC flagpole.
- 4.2 When flag AP is displayed ashore, "1 minute" is replaced with "not less than 60 minutes in the race signal AP." This changes RRS Race Signals.

5 SCHEDULE OF RACES

- 5.1 For the **PHRF A1, A2, B, C, N, & CRUISING ONE-DESIGN** classes, refer to Attachment A.
- 5.2 For the **HOSPICE, CRCA CRUISER, CRCA PERFORMANCE CRUISER, & PHRF A0** classes, refer to Attachment B.
- 5.3 For the **HARBOR 20** class, refer to Attachment C.

6 RACING AREAS

The racing areas will be on the Severn River and the Chesapeake Bay, off Annapolis.

7 THE COURSE

- 7.1 For the **PHRF A1, A2, B, C, N, & CRUISING ONE-DESIGN** classes, refer to Attachment A.
- 7.2 For the **HOSPICE, CRCA CRUISER, CRCA PERFORMANCE CRUISER, & PHRF A0** classes, refer to Attachment B.
- 7.3 For the **HARBOR 20** class, refer to Attachment C.

8 MARKS

- 8.1 For the **PHRF A1, A2, B, C, N, & CRUISING ONE-DESIGN** classes, refer to Attachment A.
- 8.2 For the **HOSPICE, CRCA CRUISER, CRCA PERFORMANCE CRUISER, & PHRF A0** classes, refer to Attachment B.
- 8.3 For the **HARBOR 20** class, refer to Attachment C.

9 THE START

- 9.1 For the **PHRF A1, A2, B, C, N, & CRUISING ONE-DESIGN** classes, refer to Attachment A.
- 9.2 For the **HOSPICE, CRCA CRUISER, CRCA PERFORMANCE CRUISER, & PHRF A0** classes, refer to Attachment B.
- 9.3 For the **HARBOR 20** class, refer to Attachment C.

10 THE FINISH

- 10.1 For the **PHRF A1, A2, B, C, N, & CRUISING ONE-DESIGN** classes, refer to Attachment A.
- 10.2 For the **HOSPICE, CRCA CRUISER, CRCA PERFORMANCE CRUISER, & PHRF A0** classes, refer to Attachment B.
- 10.3 For the **HARBOR 20** class, refer to Attachment C.

11 TIME LIMIT

- 11.1 For the **PHRF A1, A2, B, C, N, & CRUISING ONE-DESIGN** classes, refer to Attachment A.
- 11.2 For the **HOSPICE, CRCA CRUISER, CRCA PERFORMANCE CRUISER, & PHRF A0** classes, refer to Attachment B.
- 11.3 For the **HARBOR 20** class, refer to Attachment C.

12 PENALTY SYSTEM

For the **CRUISING ONE-DESIGN, HOSPICE, and HARBOR 20** classes only, RRS 44.1 is changed so that when a rule of Part 2 is broken outside the zone at a mark, and there is no injury or damage, and no significant advantage is gained, the Two-Turns Penalty is replaced by the One-Turn Penalty. This changes RRS 44.1.

13 PROTESTS AND REQUESTS FOR REDRESS

- 13.1 Competitors intending to file a written protest or request for redress that is based on an incident in the racing area are requested to inform the Race Committee (RC) of their intent upon finishing, or at the first reasonable opportunity. This is intended as a courtesy to the Protest Committee (PC) and shall not be grounds for protest or for determining validity.
- 13.2 The protest time limit for the following classes is sixty (60) minutes after their RC Signal Boat docks: **PHRF A0, A1, A2, B, C, N; CRUISING ONE-DESIGN; HOSPICE; CRCA CRUISER; & CRCA PERFORMANCE CRUISER**. This changes RRS 62.2.
- 13.3 The protest time limit for the **HARBOR 20** class is two (2) hours after the first finisher. This changes RRS 62.2.
- 13.4 The time limit for requests for redress based on an incident in the racing area shall be the protest time limit as stated in 13.2 and 13.3. This changes RRS 62.2.
- 13.5 Protests shall be filed at EYC. For each class, the protest time limit. Notices of protests by the RC or PC will be posted on the Official Notice Board at EYC to inform boats under RRS 61.1(b).
- 13.6 Notice(s) will be posted soon after receipt to inform competitors of hearings in which they are parties or named as witnesses. Hearings will be held at EYC no sooner than the Protest Time Limit.

14 SCORING

- 14.1 For the **PHRF A1, A2, B, C, N, & CRUISING ONE-DESIGN** classes, refer to Attachment A.
- 14.2 For the **HOSPICE, CRCA CRUISER, CRCA PERFORMANCE CRUISER, & PHRF A0** classes, refer to Attachment B.
- 14.3 For the **HARBOR 20** class, refer to Attachment C.

15 SAFETY REGULATIONS

- 15.1 Except for the **HOSPICE** class, boats shall check in with the RC Signal Boat prior to their first start of the day by hail of their sail number (or name if no sail number) and an acknowledgement from the RC.
- 15.2 All boats shall carry a VHF radio capable of communicating on VHF channels 9, 13, 16 and the appropriate class courtesy channel (identified in Attachments A, B, and C).
- 15.3 A boat that retires from a race, or leaves the racing area between races, shall notify the RC at the first reasonable opportunity.
- 15.4 Penalties for breaking SIs 15.1, 15.2, 15.3, or RRS 55 may be less than disqualification if the protest committee so decides.

16 RADIO COMMUNICATIONS

- 16.1 For the **PHRF A1, A2, B, C, N, & CRUISING ONE-DESIGN** classes, refer to Attachment A.
- 16.2 For the **HOSPICE, CRCA CRUISER, CRCA PERFORMANCE CRUISER, & PHRF A0** classes, refer to Attachment B.
- 16.3 For the **HARBOR 20** class, refer to Attachment C.

17 COMMERCIAL TRAFFIC

- 17.1 A boat may not exercise right of way, cross in proximity to, or interfere with reasonable transit of the race area by commercial traffic. A boat protested under this rule has the burden of proof that she complied with this rule. Boats shall take evasive action well in advance of any potential situations. The U.S. Coast Guard, ship captains, and bay pilots have been encouraged to report any incident they observe.
- 17.2 Boats may not protest other boats for breaking SI 17.1. This changes RRS 60.1.
- 17.3 The RC or PC may protest under SI 17.1, based on information received from any source. There is no time limit for protests filed under SI 17.1. This changes RRS 60.2, RRS 60.3, and RRS 61.3.
- 17.4 RRS 42.3 (Propulsion - Exceptions) is changed by adding: "(j) A boat that is without way in a ship channel may use any means of propulsion to clear the channel at the approach of commercial traffic provided that, when becoming clear of the commercial traffic, the boat has not improved their position as a result of this action. A boat claiming this exception shall report the incident in writing to the protest committee within the protest time limit, with all the facts necessary to substantiate the boat's speed and change of position during the incident."
- 17.5 RRS 62.1 (Redress) is changed by adding: "(e) clearing a ship channel in compliance with SI 17.4."

18 DISCLAIMER OF LIABILITY

Competitors participate in the regatta entirely at their own risk; refer to RRS 4. The Organizing Authority will not accept any liability for material damage or personal injury or death sustained in conjunction with or prior to, during, or after the event.

19 INSURANCE

Each participating boat shall be insured with valid third-party liability insurance with a minimum coverage of \$300,000 (US) per incident, or the equivalent.

20 PRIZES

- 20.1 A party at the Bert Jabin Yacht Yard, will be held on Saturday, 17 September 2016, 1700-2100. The party offers live music with The Shatner's, silent and live auctions, and catering from Paul's Homewood Cafe. Come join the fun and help Hospice Cup raise funds for hospice programs. Details can be found at www.hospicecup.org.
- 20.2 Prizes in each class will be given as follows:
1st and 2nd Place for six (6) or more entries;
3rd Place for seven (7) or more entries.
- 20.3 Additional prizes may be awarded at the discretion of the Organizing Authority.

21 ADDITIONAL INFORMATION

This is a Clean Regatta. All competitors are strongly encouraged to use multi-use water bottles instead of disposable water bottles, and to recycle whenever possible. RRS 55 prohibits placing trash in the water.

22 CHARITY

Hospice Cup is a charity event. Proceeds are donated to Hospice Cup, Inc., to benefit hospices in Virginia and Maryland. For information about making a tax-deductible donation, with guest privileges, or to learn about Hospice Cup, Inc., see www.hospicecup.org.



Hospice Cup XXXV

Saturday, 17 September 2016

ORGANIZING AUTHORITY
Eastport Yacht Club

Assisted by
Annapolis Yacht Club



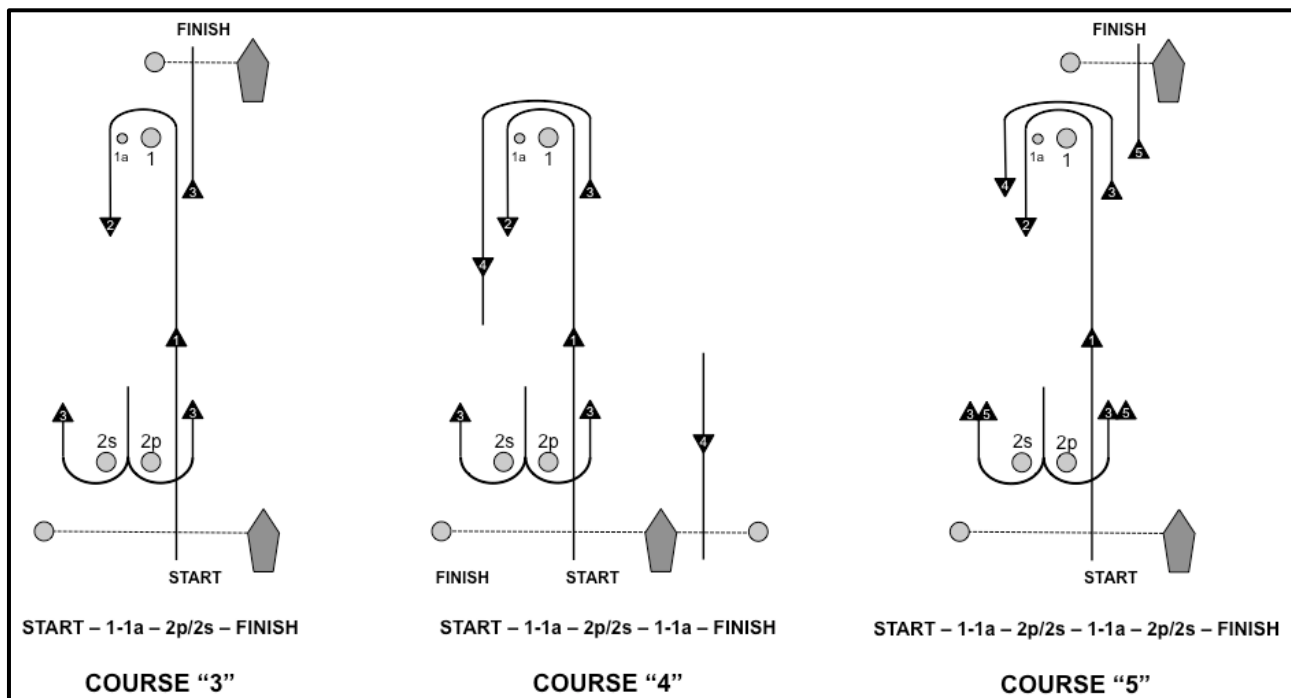
ATTACHMENT A for the PHRF A1, A2, B, C, N, & CRUISING ONE-DESIGN Classes

1 SCHEDULE OF RACES

- 1.1 Three (3) races are scheduled for the **PHRF A1, A2, B, C, N,** and **CRUISING ONE-DESIGN** classes.
- 1.2 Competitors shall rendezvous at 1000 hours in the vicinity of **CBYRA "X"** (R2, FI 2.5s). The racing area is shown in Figure A-1.
- 1.3 The Warning Signal for the first race is intended to be made at 1100 hours.
- 1.4 No Warning Signal shall be made after 1500 hours.
- 1.5 All **PHRF A1, A2, B, C, N,** racers shall display from the backstay their class flag as specified in the CBYRA General SI 4. **CRUISING ONE-DESIGN** racers are encouraged to display from the backstay their class flag as specified in the CBYRA General SI 4. Competitors in the Alerion Express 28 class shall display the Alerion class flag from the backstay.

2 THE COURSES

- 2.1 The courses will be windward-leeward, as shown in the diagram below (not to scale). Marks shall be rounded and the finish line crossed in the order presented in the description below each course diagram.



- 2.2 No later than the Warning Signal, the course to be sailed, the approximate heading, and the distance to the first mark will be designated by placards displayed on the stern or side of the Signal Boat that is opposite the start line.
- 2.3 Rounding marks shall be passed to port.
- 2.4 RC may set a leeward gate. If a leeward gate is placed, boats shall pass between the two marks.
- 2.5 RC may set a weather offset mark. If used, the weather offset mark shall be passed to port.
- 2.6 For all courses, the leeward mark/gate is not a mark of the course during the first leg of the course. For COURSES "3" and "5," the weather mark and offset mark are not marks of the course on the last leg of the course. For COURSE "4" the leeward mark or gate is not a mark of the course on the last leg of the course.
- 2.7 When the first mark of the course is to be a change mark, code flag "C" will be displayed by the starting line signal boat before the warning signal, accompanied by a series of repetitive sound signals.

3 MARKS

- 3.1 Start/Finish and Offset marks will be lime-green cylinders. All other marks will be orange cylinders displaying the letters "AYC."
- 3.2 The first change mark shall be an orange cylinder with a dark colored band. Subsequent change mark will revert to the previous type of mark.

4 THE START

- 4.1 The starting line will be between a staff displaying an orange flag on the starboard end RC Signal Boat, and the course side of the port end starting mark.
- 4.2 The Starting Area is defined as extending 100 yards beyond each end of the starting line and 100 yards behind the starting line and its extensions. Boats shall keep clear of the Starting Area and the first leg of the course until the Signal Boat has hoisted its Class Flag.
- 4.3 The start order of the first race will be:
 - PHRF A2
 - J/105Subsequent starts may be in a different order so as to maximize racing for all classes.

5 CHANGE OF COURSE

To change the next leg of the course, the RC will lay a new mark (or move the finishing line) and remove the original mark as soon as practicable. When in a subsequent change a new mark is replaced, it will be replaced by an original mark.

6 THE FINISH

The finish line shall be between the staff or halyard on the RC Signal Boat displaying a blue flag and the course side of the finishing mark.

7 TIME LIMIT

RRS 35 (Time Limit) is replaced by: "If the first boat in her class does not finish within two (2) hours, the race shall be abandoned. Boats still racing twenty (20) minutes after the first boat in her class finishes, and not subsequently retiring, being penalized or given redress, will be scored TLE (Time Limit Expired, see Scoring) and should proceed to the starting area if another race is scheduled.

8 SCORING

- 8.1 RRS Appendix A4, Low Point System, will apply.
- 8.2 One (1) scored race is required to constitute a series.
- 8.3 Scoring shall be in accordance with PHRF Time over Distance handicaps.
- 8.4 A boat's series score will be the total of her race scores. This changes RRS A2.
- 8.5 Boats to be scored TLE and not thereafter retiring, being penalized or given redress will be scored points equal to the number of boats finishing within the time limit plus two (2) points by the race committee without a hearing. This changes RRS A4.2 and A5.
- 8.6 Scoring inquiries may be made at the protest desk.
- 8.7 One-design scoring will be granted for any class with at least six (6) entries.

9 RADIO COMMUNICATIONS

- 9.1 RC will communicate with competitors on VHF channel 72.
- 9.2 Boats are encouraged to make contact with commercial traffic on VHF channel 13, as required for safety.
- 9.3 Failure to hear a broadcast, the RC's failure to broadcast, or the content of any broadcast shall not be grounds for redress.

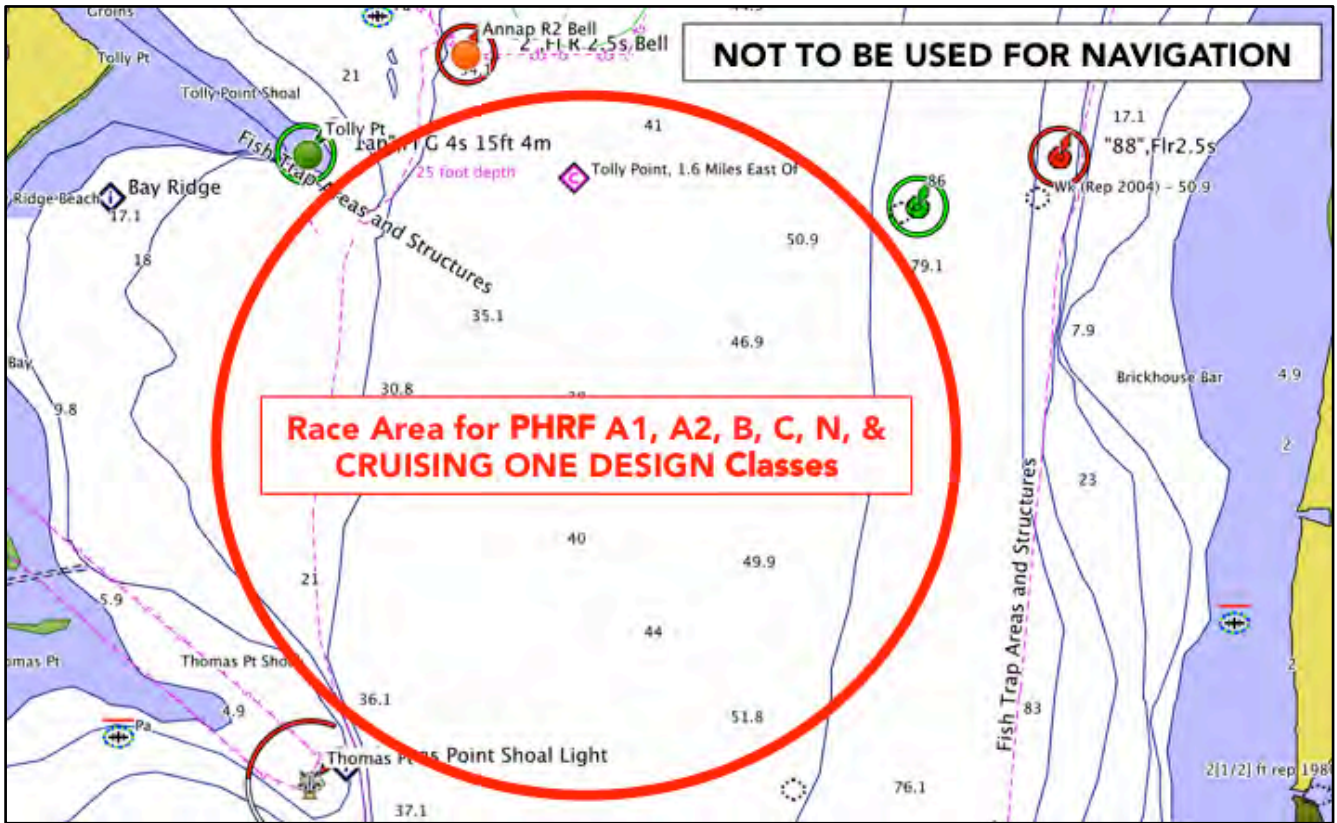


FIGURE A-1. Race Area for PHRF A1, A2, B, C, N, & CRUISING ONE-DESIGN Classes



Hospice Cup XXXV

Saturday, 17 September 2016

ORGANIZING AUTHORITY
Eastport Yacht Club

Assisted by
Annapolis Yacht Club



ATTACHMENT B for the HOSPICE, CRCA CRUISER, CRCA PERFORMANCE CRUISER, & PHRF A0 Classes

1 SCHEDULE OF RACES

- 1.1 A mandatory competitors meeting for all **HOSPICE** class competitors will be held on Thursday, 15 September 2016, at the Eastport Yacht Club, 317 First Street, Annapolis, MD; the meeting will begin at 1900 hours. The skipper or a designated representative of each boat **must** attend this meeting. It is recommended that competitors in the CRCA CRUISER, CRCA PERFORMANCE CRUISER, & PHRF A0 classes also attend the meeting; this changes NoR 2.7. Note that all visitors must park off the premises; parking in the EYC lot is by permit sticker only. Unauthorized vehicles are subject to towing at the owner's expense.
- 1.2 The **HOSPICE**, **CRCA CRUISER**, **CRCA PERFORMANCE CRUISER**, & **PHRF A0** classes shall compete in one (1) race.
- 1.3 Competitors shall rendezvous at 1100 hours in the vicinity of **R2, FI 2.5s (CBYRA "X")**.
- 1.4 The Warning Signal for the race is intended to be made at 1155 hours.
- 1.5 No Warning Signal shall be made after 1330 hours.
- 1.6 All **HOSPICE** class competitors shall display from the backstay an orange streamer. The streamer will be handed out at the mandatory competitors meeting.

2 THE COURSE

- 2.1 RC shall designate one (1) of two (2) possible courses to be sailed (refer to FIGURE B-1). The board designating the course to be sailed shall be displayed on the non-start side of the Signal Boat. The two (2) possible courses are:

RED "P" COURSE

START – WR87 – G91 – FINISH

All rounding marks shall be kept to port.

GREEN "S" COURSE

START – G91 – WR87 – FINISH

All rounding marks shall be kept to starboard.

- 2.2 The course is approximately 7.6 nm.

3 MARKS

The marks have the following approximate Lat/Long coordinates.

R2, FI R 2.5s

N 38° 56.48'

W 076° 25.46'

WR87, Q G

N 38° 55.98'

W 076° 23.56'

G91, FI G 4.0s

N 38° 59.01'

W 076° 23.27'

4 THE START

- 4.1 This shall be a pursuit race with a reverse PHRF Time over Distance (ToD) starting order. The boat with the slowest (largest) rating will start first and the fastest (smallest) shall start last.
- 4.2 The RC intends to signal the starting sequence as follows (this changes RRS 26):

Time	Signal	Flag/Sound
1155	Warning signal for all boats	Raise large EYC burgee with 1 sound.
1156	Preparatory signal for the first boat to start	Raise code flag "P" with 1 sound.
1159		Lower code flag "P" with a long sound.
1200	Starting signal for the first boat to start	Lower large EYC burgee and briefly raise number pennant "0" with 1 sound.
each subsequent start time	Starting signal for remaining boats	Briefly raise and lower number pennant "0" with 1 sound.

- 4.3 For the purposes of definition of "racing," each boat's preparatory signal is four (4) minutes prior to her scheduled start.
- 4.4 The start times for all boats will be based on their PHRF ToD handicap. The RC shall use GPS time synchronization. The RC will attempt to broadcast a five (5) second countdown for each starting time on VHF channel 73. Failure of the RC to announce a start time shall not be grounds for redress.
- 4.5 The start time for each boat, including its time interval from the first start, shall be available at EYC no later than 1730 hours on Friday, 16 September 2016, and will be posted on the EYC website.
- 4.6 The start line shall be between a staff displaying an orange flag on the RC boat and **R2, FI 2.5s (CBYRA "X")**.
- 4.7 After the warning signal for the first start, boats shall stay clear of the starting area until 4 minutes before their scheduled starting time.
- 4.8 RRS 29.1 is replaced with: "When at a boat's starting signal any part of her hull, crew or equipment is on the course side of the starting line, the RC shall promptly hail her number on VHF channel 73. **Individual Recall, code flag "X," will not be used.**" This changes RRS 29.1.
- 4.9 Boats that are On Course Side will receive a scoring penalty of ten (10) minutes plus the amount of time early. This changes RRS 44.3(c).
- 4.10 In the event a postponement is signaled on the water, the RC shall announce the revised start times on VHF channel 73 before lowering the postponement flag.

5 THE FINISH

- 5.1 The finish line shall be between a staff displaying an orange flag on the RC boat and **R2, FI 2.5s (CBYRA "X")**.
- 5.2 The RC may shorten the course at any rounding mark in accordance with RRS 32.

6 TIME LIMIT

The race shall be abandoned if no boat finishes within three (3) hours of the first start time. Boats not finishing within one (1) hour of the first boat to finish shall be scored TLE. This changes RRS 35.

7 SCORING

- 7.1 Boats will be scored in the order of finish.
- 7.2 Boats to be scored TLE and not thereafter retiring, being penalized or given redress will be scored points equal to the number of boats finishing within the time limit plus two (2) points, but not worse than Did Not Finish, by the RC without a hearing. This changes RRS A4.2 and A5.
- 7.3 Scoring inquiries may be made at the protest desk.

8 RADIO COMMUNICATIONS

- 8.1 RC will communicate with competitors on VHF channel 73.
- 8.2 Boats are encouraged to make contact with commercial traffic on VHF channel 13, as required for safety.
- 8.3 Failure to hear a broadcast, the RC's failure to broadcast, or the content of any broadcast shall not be grounds for redress.

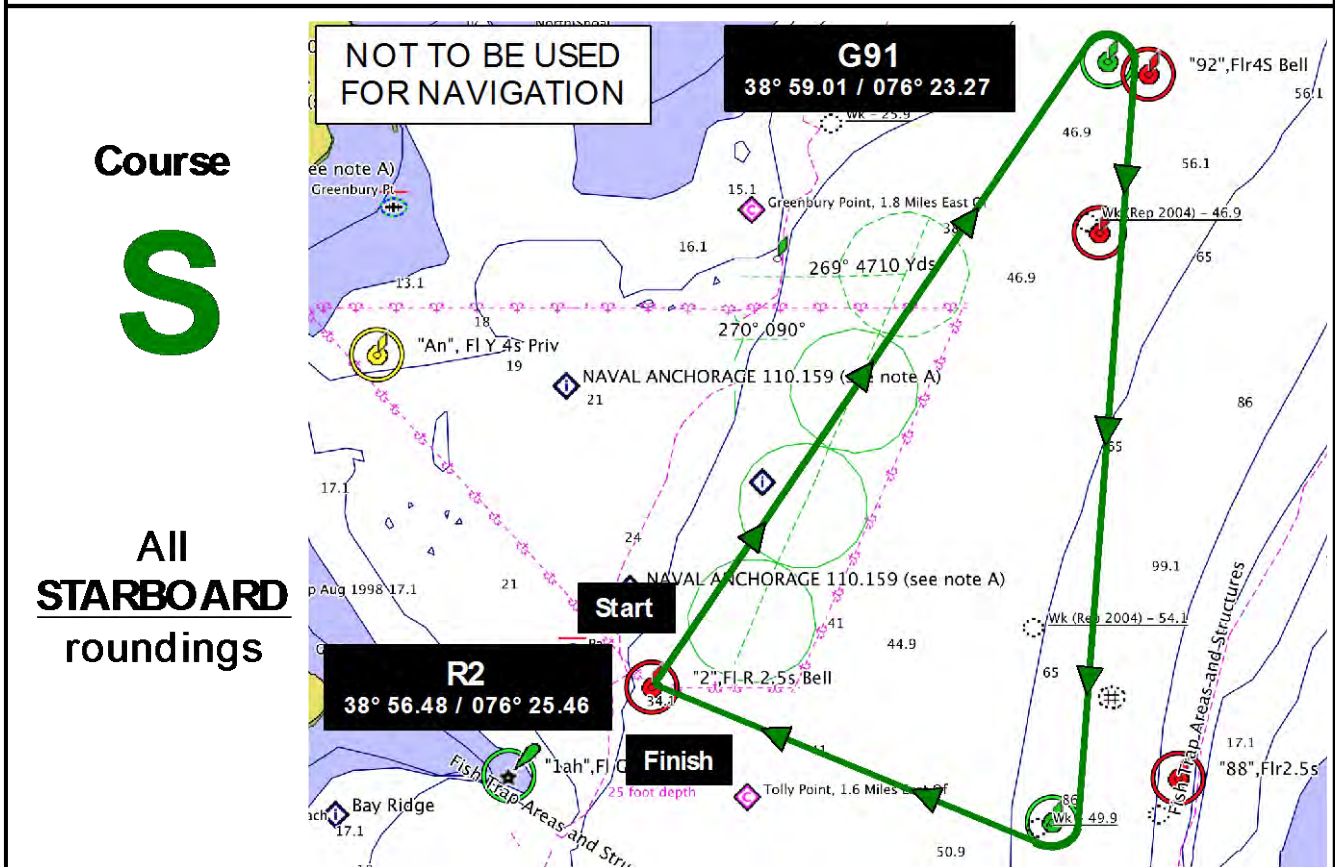
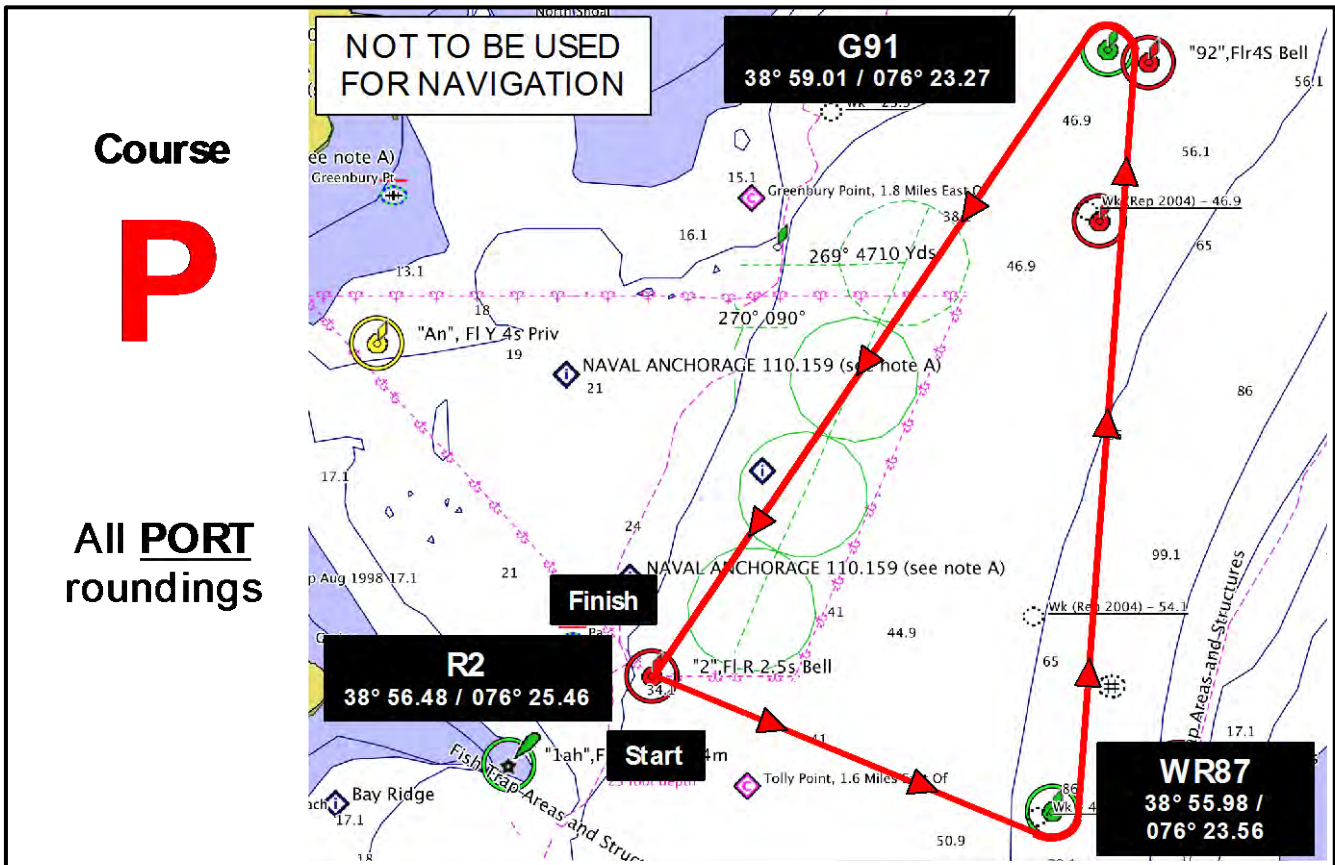


FIGURE B-1. HOSPICE, CRCA CRUISER, CRCA PERFORMANCE CRUISER, & PHRF A0 Classes Course Diagrams



Hospice Cup XXXV

Saturday, 17 September 2016

ORGANIZING AUTHORITY
Eastport Yacht Club

Assisted by
Annapolis Yacht Club



ATTACHMENT C for the HARBOR 20 Class

1 SCHEDULE OF RACES

- 1.1 One (1) race is scheduled for the **HARBOR 20** class.
- 1.2 Competitors shall rendezvous at 1130 hours in the vicinity of G5 (FI G, 4s).
- 1.3 The Warning Signal for the first race is intended to be made at 1200 hours.
- 1.4 No Warning Signal shall be made after 1430 hours.

2 THE COURSE

- 2.1 The course, shown in Figure C-1, shall be:
START – R14 – G5 – R14 – G5 – G13 – FINISH
- 2.2 All rounding marks shall be kept to PORT.
- 2.3 The Horn Point Shoal Mark (HP, FI W 6.0s) shall be passed on the channel side.

3 MARKS

For the Harbor 20 class, the marks have the following approximate Lat/Long coordinates.

G5	R14	G13	G 1SC
<u>G5, FI G 4s</u>	<u>R14</u>	<u>G13</u>	<u>G 1SC</u>
N 38° 58.3'	N 38° 59.1'	N 38° 58.9'	N 38° 58.6'
W 076° 27.7'	W 076° 28.7'	W 076° 28.4'	W 076° 28.8'

4 THE START

- 4.1 The Warning and Start shall be signaled with the Harbor 20 class flag.
- 4.2 The starting line shall be between the staff or halyard on the RC Signal Boat displaying an orange flag and the course side of **G5**. Note that **G5** shall be the starboard end of the starting line.

5 RECALLS

- 5.1 Recalls shall be signaled in accordance with RRS 29.
- 5.2 The RC may attempt to notify boats identified as on the course side by announcing their sail numbers on VHF channel 71. Failure to transmit or receive such notification will not be grounds for redress. This changes RRS 62.

6 THE FINISH

- 6.1 The finish line shall be between a staff displaying an orange flag on the NW corner of the EYC deck and "**G1SC**" at the mouth of Spa Creek.
- 6.2 When finishing, "**G1SC**" shall be left to starboard. Boats that have finished shall clear the finish area completely and not sail back through the finish line. Boats leaving Spa Creek after crossing the finish line shall pass to the north of "**G1SC**." This changes RRS 28.1.

7 TIME LIMIT

- 7.1 If no boat in the **HARBOR 20** class finishes within 2-1/2 hours of the start, the race shall be abandoned.
- 7.2 Boats failing to finish within one (1) hour after the first **HARBOR 20** that sails the course and finishes shall be scored Did Not Finish. This changes RRS 35 and A4. Boats leaving the course without finishing shall promptly notify the RC on VHF channel 71.

8 SCORING

- 8.1 RRS Appendix A4, Low Point System, will apply.
- 8.2 Boats to be scored TLE and not thereafter retiring, being penalized or given redress will be scored points equal to the number of boats finishing within the time limit plus two (2) points by the RC without a hearing. This changes RRS A4.2 and A5.
- 8.3 Scoring inquiries may be made at the protest desk.

9 RADIO COMMUNICATIONS

- 9.1 The RC will communicate with competitors on VHF channel 71.
- 9.2 Boats are encouraged to make contact with commercial traffic on VHF channel 13, as required for safety.
- 9.3 Failure to hear a broadcast, the RC's failure to broadcast, or the content of any broadcast shall not be grounds for redress.

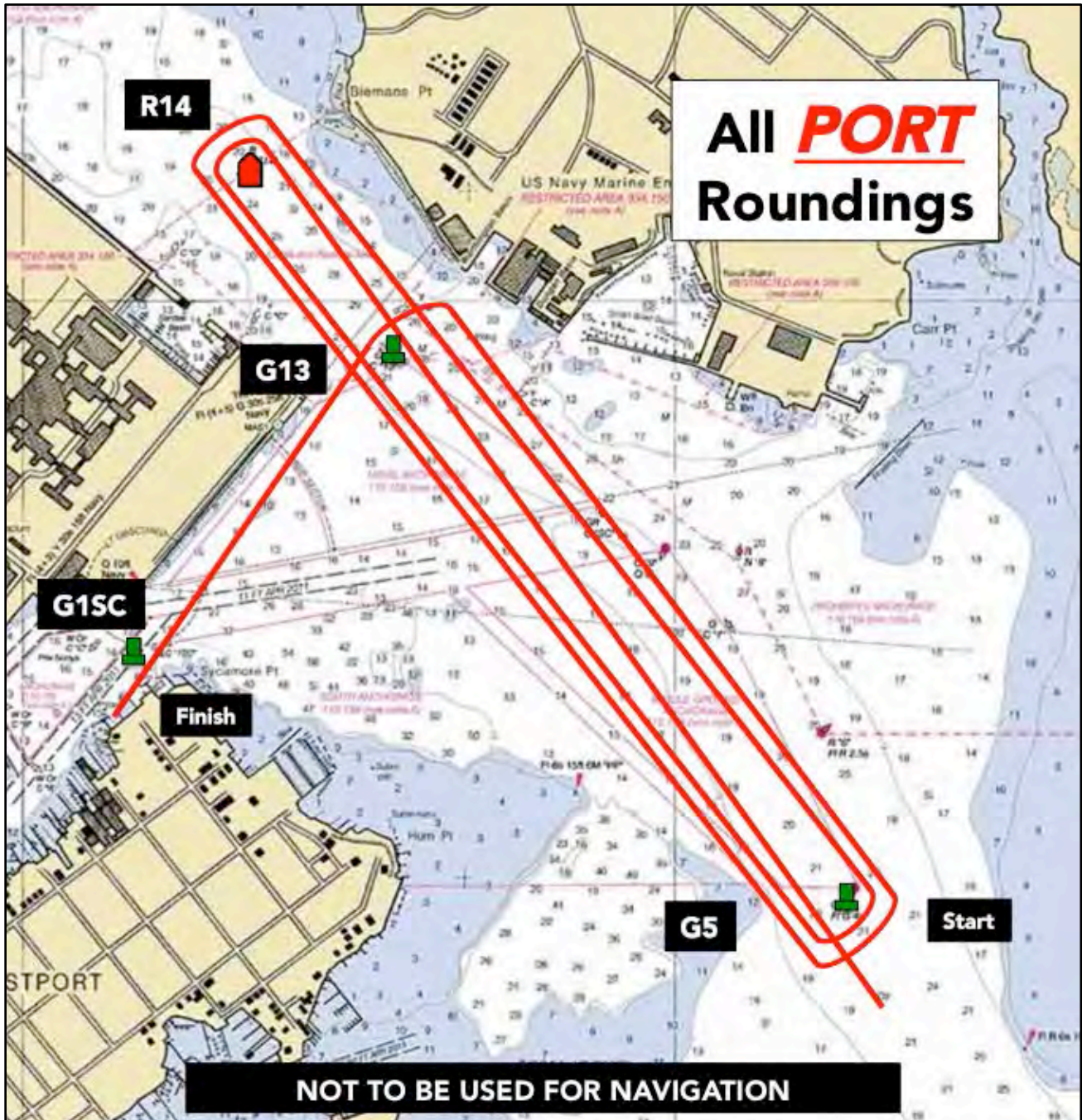


FIGURE C-1. HARBOR 20 Race Course Diagram