

Chandlers Landing BayView Yacht Clubs 2016 Sailing Instructions

For further information or to recommend changes or additions contact

Raced Officer contact information:

Race Committee Officer	Phone number	Email	Boat Name
Roy Kuipers (CLYC Vice Commodore)	(214) 274-5227	roy@rkuipers.com	Three Sheets to the Wind
Dan Malak (CLYC Commodore)	(214) 669-6937	malakc@sbcglobal.net	Orion
Robert Williams (CLYC Scorer)	(214) 478-4111	rwilliams4111@gmail.com	Hotter Tuna
Chris Hunke	(214) 987-4104	c_hunke@hotmail.com	Swale
Mike Jones	(469) 438-4412	mrjones@bigplanet.com	Wings
Bob Barnes		Bob.Barnes@region10.org	Claire De Lune
Phil McBride		philipjmcbr@gmail.com	Carpe Diem
David Lawson		dclawso@yahoo.com	Respite
Marshall McKenzie		marshall375@verizon.net	Escape
Katherine Cazabon (BYYC Commodore)		vannapolecatherine@aol.com	

Thank you, and have a great time racing

Chandlers Landing BayView Yacht Clubs 2016 Sailing Instructions

1 RULES

- 1.1 Events/Race-Series will be governed by the Racing Rules of Sailing (2013-2016) ([ISAFRRS](#)), and these Sailing Instructions.
- 1.2 *All boats shall provide to the race committee a completed registration form. To register go to the Regatta Networks Web page ([CLYC/BVYC Registration](#)). The registration form shall include all the sail numbers under which the boat might sail, and contact information as requested.*
- 1.3 *Updates to a boats registration information (i.e. contact info, sail no's, etc) shall be provided to the scorer . See race officer contact information on page one of these instructions.*

2 NOTICES TO COMPETITORS

The Chandlers and BayView Yacht Club WEB and Facebook pages will be used as the Official Notice Board. Notices will also be forwarded by email to registered sailors and crew. Crew wishing to receive notices shall provide contact information to the boats skipper that should then be forwarded to the race committee.

Club:

Chandlers Landing Yacht Club

Web Page : <https://sites.google.com/site/clyticsailing/welcometochandler'slandingsailingclub>

Facebook Page : <https://www.facebook.com/chandlerslandingyachtclub>

Bayview yacht Club

Web Page : www.bvyc.us

Facebook Page: www.Facebook.com/bayviewyachtclub

3 CHANGES IN SAILING INSTRUCTIONS

- 3.1 Any changes to these Sailing Instructions will be posted on the official notice board with notification from Facebook page twenty four hours prior to the scheduled start time of the race in which it will take affect.

4 SIGNALS MADE ASHORE

- 4.1 All visual signals made ashore will be displayed from each clubs committee boat. Code Flag “AP” (Answering Pennant) with two sound signals (one when lowered) means “The race is postponed”. The warning signal will be made not less than 1 minutes after the “AP” is lowered. All signals made ashore shall also be announced via radio broadcast (see section 14 RADIO COMMUNICATION).

5 SCHEDULE OF RACES

- 5.1 Races will be conducted per the schedule posted on the official notice board (see NOTICES TO COMPETITORS).
- 5.2 Unless agreed to otherwise, and posted in advance only one race is scheduled per day.
- 5.3 Official time to be used for races shall be UTC (Coordinated Universal time), or GMT (Greenwich Mean Time).

Note: *GPS time shall not be used (as of July 2015 GPS time officially differs by 17 seconds from UTC, see <https://confluence.gps.nl/display/KBE/UTC+to+GPS+Time+Correction> for correction info).*

Correct UTC/GMT time may be obtained from one of the following.

Greenwich website to set your watch....., <http://wgp.greenwichmeantime.com>

Atomic clock website to set your watch....., <http://www.time.gov>

Chandlers Landing BayView Yacht Clubs 2016 Sailing Instructions

6 CLASS FLAGS

- 6.1 Unless sailing instruction 6.3 applies there will be one starting class for all races and shall be designated by the class flag "Numeral 1". Numeral flags shall be used to designate all classes starting
- 6.2 The fleets designated for each sailing series will be as follows: "A" Aux boats with phrf less than 180 (this includes sport boats); "B" Aux boats with phrf greater than 179 and all "Main and Jib" boats (see note MJ). Race Committee shall not add any additional fleets to any race, or series without prior approval of senior race officers from each club.
- 6.3 If the number of boats entering a days race is greater than 30, or at the discretion of the race committee additional starts may be used. If it is decided to use additional starts the first starting fleet will be designated as starting class one represented by the class flag "Numeral 1". The second starting fleet will be designated as starting class two by the class flag "Numeral 2", etc.
- 6.4 In the event of multiple starts, starting class One will comprise all the "A" fleet boats and all other fleets NOT designated by the race committee as starting in a subsequent/additional start(s).

MJ – Boats declaring that they wish to sail as "Main and Jib" (MJ) shall notify the race committee prior to the beginning of each series, and shall sail the entire series under main and jib alone. If at any point during a series a boat that has declared MJ is found to be sailing with a spinnaker all scoring for that boat will be changed back to standard PHRF scoring (see 13.5).

7 RACING AREA

- 7.1 The racing area is on Lake Ray Hubbard south of interstate 30 (see Appendix 2: Map - Lake Marks).

8 THE COURSE

- 8.1 The course to be sailed will be designated and announced by the race committee prior to the start of the days race.
- 8.2 The Typical course to be sailed will be – "W" (Windward/Leeward). A numeric modifier may be used in addition to this designation to indicate the number of upwind legs (number of laps). See diagram in Appendix 1: Courses (i.e. "W2" indicates a "W" course sailed two times).
- 8.3 At the discretion of the race committee the course "T" (Triangle), and "O" (Olympic), along with numeric modifiers may be used. If these courses are designated the race committee will designate two permanent marks of the lake with the first indicating the windward mark, and the second being the Jibe mark. If no second mark is indicated on the course board then an alternate (Jibe) mark will have been set by the committee. See "Jibe Mark" (9.3)
- 8.4 Leave all marks to port except as prescribed by the course to be sailed (see also 8.7).
- 8.5 The letters "A" and "B" will be used as alpha modifiers to the course designations above indicating the fleet to which the course applies (i.e. "B181W2" – indicates that the "B" fleet is to sail a W2 course using mark 181 as the windward mark). In the event that a fleet designation is not used all boats shall sail the same course.
- 8.6 The mark designations listed in Appendix 3 or the compass heading will be used as a numeric modifier preceding the course designation indicating the heading to the first mark of the course. All compass headings will be shown as a numeric value ending with the number "0" or "5". All mark designations represent the compass bearing to the mark divided by 10. The third digit of a mark designation represents the distance to the mark from mark "S".

Examples of courses indicated on the course board

A 182 W2
| | Course to be sailed – W2 (windward – leeward – windward – leeward)
| | Compass heading or **mark** to be sailed to – mark 18-2
Start Fleet "A".

B 15 T
| | Course to be sailed – t (windward – reach – reach)
| | Compass heading or **mark** to be sailed to – mark 15
Start Fleet "B".

B 200 WT
| | Course to be sailed – t (windward – leeward)
| | **Compass heading** to mark or temporary mark – 200 degrees
Start Fleet "B".

(In the event all fleets are to use the same windward mark the compass heading or mark designation may be posted separately.)

Examples of course board for a days race

182 Heading to the first mark is 180 degrees and the distance is 2 miles
AW2 The "A" fleet course will be a W2 with a windward head of 180 degrees
BW The "B" fleet course will be a W with a windward heading of 180 degrees (same as the "A" Fleet)

Chandlers Landing BayView Yacht Clubs

2016 Sailing Instructions

- 8.7 For long distance courses or courses not designated by the course descriptors "T", "W" and "O" the following instructions shall be used. *The "T", "W" and "O" descriptors shall be omitted from the course description.*
- 8.7.1 The course shall be designated by posting the designations of each of the marks to be rounded. In the event that the "Start-Finish" mark is used as a mark to be rounded it shall be designated as mark "0" (zero).
- 8.7.2 Marks shall be rounded in the order posted on the course board.
- 8.7.3 Leave all marks to port except as prescribed by the course to be sailed. If the course to be sailed is rounding in a clockwise direction then the marks of the course shall be left to starboard. If the course to be sailed is rounding in a counter-clockwise direction then the marks of the course shall be left to port.

Examples of courses indicated on the course board

A	S	D	Start Fleet "A".		
			Second mark to be rounded (Dam – D3). Leave mark to Port		
			First mark to be rounded (Sunnyvale – S9). Leave mark to Port		
B	D	S	Start Fleet "B"		
			Second mark to be rounded (Sunnyvale – S9). Leave mark to Starboard		
			First mark to be rounded (Dam – D3). Leave mark to Starboard		
B	15	9	<i>(this course is equivalent to a "T")</i>		
			Second mark to be rounded (9). Leave mark to Port		
			First mark to be rounded (15). Leave mark to Port		
A	15	27	<i>(this course is equivalent to a "W")</i>		
			Mark to be rounded (27). Leave mark to Port		
			First mark to be rounded (15). Leave mark to Port		
B	181	9	0	181	<i>(this course is equivalent to a "TW")</i>
					Fourth mark to be rounded (181). Leave mark to Port
					Third mark to be rounded (0). Leave mark to Port
					Second mark to be rounded (9). Leave mark to Port
					First mark to be rounded (181). Leave mark to Port

- 8.7.4 All Main and Jib boats shall sail the course designated for fleet "B".

9 MARKS

- 9.1 The marks of the course will be the permanent marks/buoys of the lake as described on the map in appendix A. Each of the marks has been marked with an alpha, or numeric designation as shown on the map. GPS coordinates for each of these marks is provided. See Appendix 3: Locations – Lake Marks
- 9.2 In the event that the permanent marks cannot be used to conduct a race the Race Committee will post the Hail flag and signal the use of other marks (orange spheres or tetrahedrons).
- 9.3 Jibe Marks –Jibe marks (designated "OS" in course diagrams) if used will be Orange Spheres ("OS") or tetrahedrons.
- 9.4 In the event of a missing mark the lead boat shall sail to the nearest visible mark and use that as the new windward mark. The lead boat shall also notify the race committee and competitors via radio of the missing mark. Failure to make/receive this notification shall not be grounds for abandonment or redress.

Chandlers Landing BayView Yacht Clubs



2016 Sailing Instructions

10 THE START

- 10.1 Unless at the discretion of the Race Committee, and due to extreme conditions, a days races will not be abandoned until after its official warning time. In the event of forecast extreme conditions the race committee shall with concurrence from senior officers representing both Chandlers Landing and Bay View Race Committees notify all racers that a days race shall be abandoned, but shall not make this notification more than 12 hours prior to a days race. Abandonment more than 3 hours prior to a days race will be posted on the club(s) notice board
- 10.2 All boats shall endeavor to check-in at the Race Committee boat prior to the warning signal of each days race. Checkin may be done via radio communication with the race committee at least 5 minutes prior to the the warning signal of the days race. Race Committee may, at its discretion, wave this requirement for a days race.
- 10.3 The starting line will be between a staff displaying an orange flag on the committee boat at the starboard end and the port-end starting mark (mark "S" – see Appendix 1: Courses), or between the two permanent buoys designated as 0E and 0W (S). When using the two permanent marks for the starting line the committee boat may at its discretions be on station to either side of the starting line at Anchor or underway.

Starting line length: It is recommended that the race committee set a starting line of a minimum of 600 feet on Wednesday Nights. Race committee should take a new "S" mark (way point mark) with a GPS when setting the line, and then set the opposite end of the line based not only on wind direction (line shall be perpendicular to the wind) but also the 600 foot minimum length as well. This distance will provide an adequate starting line length for safe starts during the starting sequence. (Race committee's GPS should be turned on a minimum of 15 minutes before taking the "S" mark way point reading.)

- 10.4 Starting flags and a course board accompanied with audible signals transmitted over VHF radio are the preferred methods to start the fleet for WEDnesday NIGHT RACES
- 10.5 Not later than the warning signal, the race committee signal boat will display the mark designation for the windward mark and the course to be sailed. If a temporary mark is used the approximate compass bearing of the first leg will be displayed.
- 10.6 Boats whose warning signal has not been made shall avoid the starting area.
- 10.7 The five minute starting sequence will be used.
- 10.8 The race committee will sound a series of sounds one minute before the posted warning signal indicating the preparatory signal for the start sequence. The Postpone signal may also be used in place of the preparatory signal with the removal of the flag one minute prior to posting/sounding of the Warning Signal.

Starting Signals				
Minutes before starting signal	Visual Signal	Sound	Meaning	Misc.
-6	None	Series	Preparatory	Preparatory signal (see 10.8)
-5	Class/Fleet Flag	1	Warning	Numeric Pennants 1, 2, 3, etc 
-4	P, I, Z, Z with I, Black	1	Preparatory	 (P), (I), (Z)
-1	Preparatory Removed	1	One-minute	
0	Class Flag Removed	1	Start 1 st Class	Start and Warning for succeeding class

Chandlers Landing BayView Yacht Clubs

2016 Sailing Instructions

- 10.9 A boat starting later than 15minutes after her starting signal will be scored Did Not Start. This changes rule A4.
- 10.10 The warning signal for each succeeding class shall be made 1 minute after the starting signal of the preceding class.
- 10.11 At the conclusion of the starting sequence the committee/signal boat may be repositioned to form a gate (G) at a right angle to the course with a line approximately 100 feet long. The committee boat will be on the opposite side of the "OW" mark as the starting boat. Competitors are allowed to round either the "O" mark or the committee boat after sailing thru the gate. See Appendix 1 figure "Gate".
- 10.12 When the permanent buoys are used to form the starting line at the conclusion of the starting sequence the line shall constitute a "Gate" (as in 10.11).
- 10.13 **Race committee boat racing:**
- 10.13.1 If the race committee boat also intends to race then she shall start after all fleets have started.
- 10.13.2 The race committee boat shall declare her intentions to race via radio to all competitors prior to the warning signal of the days race..
- 10.13.3 The starting line shall be between to permanent marks, or the "OW" mark and a temporary mark as described in "marks" (see section 9 and section 10.3)
- 10.13.4 The committee boat will stay in the vicinity of the starting area "in line" and to starboard of the start line to call "boats over early".
- 10.13.5 The committee boat will still use starting signals as described in these Sailing Instructions
- 10.13.6 The committee boat will then begin the race, crossing the starting line behind the fleet(s) at a 30sec. interval of her choosing and radio the fleet when she crosses the start line.
- 10.14 **Australian Pursuit Race (Sunday or Saturday races):**
- 10.14.1 The race committee boat shall provide each boat with their respective starting time using the boat with the highest PHRF rating as the lead (scratch) boat starting at the posted starting time.
- 10.14.2 There shall be not time limit for a boat to start after her posted starting time. This changes rule A4.
- 10.14.3 The permanent marks OW and OE shall be used for the starting line..

Chandlers Landing BayView Yacht Clubs

2016 Sailing Instructions

11 THE FINISH

11.1 The finish line will be between:

11.1.1 A staff displaying an orange flag on a Race Committee boat at the starboard end, and the "0W" mark at the port end (see 10.11). **NO BLUE FLAG WILL BE USED AT THE FINISH LINE.**

11.1.2 The two permanent buoys 0W and 0E. The committee boat may be at anchor, or underway observing/taking finishes at either end of the finish line.

11.2 All boats crossing the finish line will receive a sound signal indicating a finish. Unless committee boat is racing or not on station.

11.3 The responsibility of sailing the proper course as indicated at the beginning of each race is each competitors responsibility.

11.4 The race committee will only shorten a course at the "0" mark.

11.5 Race Committee shall finish the boats as the leading most part of the boat crosses the finish line.

11.6 All boats retiring early (not intending to finish) shall notify the race committee at it earliest convenience. (See section 15 - Safety).

11.7 **Race committee boat racing:**

11.7.1 If the race committee boat is racing, and/or not present at the finish line all competitors shall record their own finish time, and **shall radio the race committee boat when their boat crosses the finish line.**

For example:

"Race Committee, this is "Soap Opera", finishing.....NOW."

Or (if competitor is using UTC time)

"Race Committee, this is "Soap Opera", finishing time is 18:30:20"

11.7.2 **Any other "first to finish" boat may also take finish times (at the request of the race committee) until relieved by the race committee boat at the finish line.**

11.7.3 Boats not providing a finish time/score for the day's race shall be scored DNF
CHANGE OF COURSE AFTER THE START

11.8 A change of course will only be signaled by the committee boat at the starboard end of the gate (see 10.11 and 10.12).

11.9 To change the next leg of the course, the race committee will indicate the new windward mark by displaying the mark designation (i.e. 182, 181, 15, 12, 9, 4) along with Code Flag "C". For complete list of marks see appendix "Location – Lake Marks".

11.10 The "+" and "-" symbols will not be used to indicate a course that has been lengthened or shortened. This changes racing rule #33

11.11 Temporary Marks ("OS") may be moved without notification and **will not** be displayed with a black band. This changes rule #33.

11.12 Boats shall pass between the race committee boat signalling the change of the next leg and the nearby mark, leaving the mark to port and the race committee boat to starboard.

11.13 For Saturday Evening and Fall Sunday races there shall be no change of course after the start unless the race committee is able to confirm agreement that all boats that started have agreed to, and acknowledge the change of course.

12 TIME LIMIT

12.1 The time limit for the first boat to finish a Sunday afternoon race will be 180 minutes (3 hours) from the start. Any boat not finishing within 210 minutes (3.5 hours) of the start will be scored DNF.

12.2 The time limit for the first boat to finish a Wednesday evening race will be 120 minutes (2 hours) from the start. Any boat not finishing within 150 minutes (2.5 hours) of the start will be scored DNF.

12.3 There shall be no time limit for a Saturday night race.

13 SCORING

13.1 The Low-Point Scoring System, rule A2 will apply.

13.2 There are two throw outs designated for the Founders Series with 7 races completed. For all other series the number of throwouts shall be: 2 if greater than 4 races completed, 1 if 4 races completed, and "NO" throwouts if less than 4 races completed

Chandlers Landing BayView Yacht Clubs

2016 Sailing Instructions

- 13.3 Boats scored as DNS, OCS, DNF or DSQ shall be scored points for the finishing place one more than the number of boats entered in the days race. (DNS shall only be scored for those boats that endeavored to come to the starting area).
- 13.4 Boats scored as DNC shall be scored points for the finishing place one more than the number of boats entered in the series.
- 13.5 Boats declaring/sailing "Main and Jib" will be scored with an additional handicap of 6 seconds applied to the listed PHRF and shall be scored along with the fleet with which they sailed.

14 RADIO COMMUNICATION

- 14.1 The race committee will monitor VHF channels 16, and 71. All communications with the race committee should be done on channel 71 or the race committee cell phone. All communications after the start of the race should be made via VHF radio so that the information is shared by all competitors. In the event of communication via cell phone, the race committee will, at its discretion, re-broadcast to all the competitors. After acknowledged contact on VHF channel 16 the race committee will direct the hailing boat to switch to channel 71.
- 14.2 Radio communications with the race committee during the starting sequence is discouraged and will only be answered at the discretion of the race committee, or in the event of an emergency.
- 14.3 The race committee will endeavour to hail individual recalls. Hails will also be broadcast on radio channel 71. Failure to make a broadcast or to time it accurately will not be grounds for a request for redress. This changes rule 62.1(a).
- 14.4 To communicate with the race committee via mobile phone use the contact numbers provided in the race officer contact information list provided on page one of these instructions. Please provide any updates to this contact information to Roy Kuipers (roy@rkuipers.com).

NOTE: DON'T FORGET to bring your **VHF RADIO**. **Race Committee** will use **channel 71** to radio information to the competitors before and during the **start sequence** which begins at **7:00p (or 6:55p** at the discretion of the race committee) **Race Committee** will radio the fleet, on **channel 71**, as to the course for the day's race. Also, monitor **channel 71** for course changes, weather changes (lightning, for example) and as a means to "stay connected" to the fleet during the race and in case any boat radios a distress message. If you do not have a working VHF radio, arrive early enough (6:45p) to be given the course from the committee boat.

15 SAFETY, ASSUMPTION OF RISK AND RELEASE

- 15.1 It shall be the sole responsibility of each yacht to decide whether or not to start or continue a race.
- 15.2 All boats participating are asked to check in with the committee boat prior to the Warning signals of each race.
- 15.3 A yacht that retires from a race is asked to notify the race committee before leaving the course area. See radio communications.
- 15.4 Competitors participate in each racing series entirely at their own risk. See Racing Rules of Sailing (2013-2016) rule 4, Decision to Race. The organizing authority will not accept any liability for material damage or personal injury or death sustained in conjunction with or prior to, during, or after the racing
- 15.5 Other Misc Safety Information:

As with any activity on the lake, remember, **SAFETY FIRST!!!**

BE AWARE All competing boats should already have an **emergency plan** to immediately retrieve a crew person who inadvertently falls overboard. All boats within close proximity to this type of emergency should be prepared to render aid.

BE AWARE that the lake water level as of **7-14-15** is **.02 feet above** full.

1. It is still recommended that racers avoid significant, shallow, muddy areas measuring depths of **3 feet or less**, along **Robertson's Point** and to stay **1/2 mi. or more** to the south of **Robertson's Point**.

2. It is still recommended that racers avoid sailing close to **Terry Point** which has **significant underwater hazards** at or near the surface. Avoid **Terry Point** by **300 yards or more** when in this area. (**plans are under way to place a "turning mark" at this 300 yard safe distance and provide everyone with GPS locations of the underwater hazard.**)

Chandlers Landing BayView Yacht Clubs

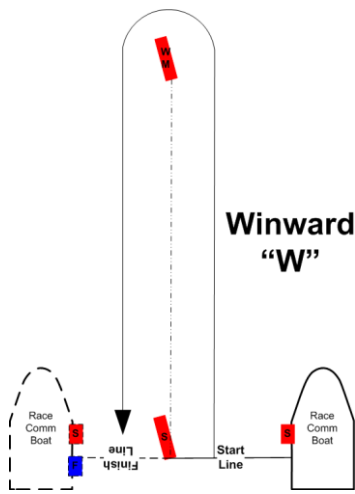
2016 Sailing Instructions

16 CHANGE HISTORY

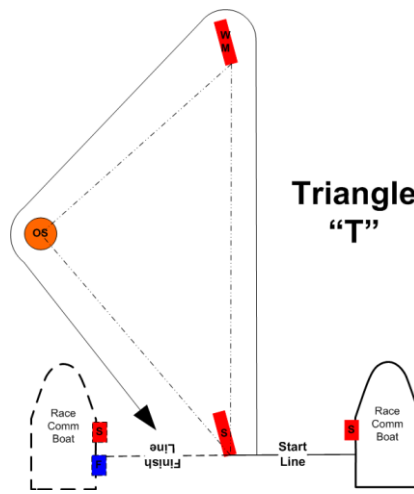
Rev 2 – 5-Feb-05	10.1 read “The finish line will be between a staff displaying an orange flag on a Race Committee boat at the port end, and a nearby mark at the starboard end . NO BLUE FLAG WILL BE USED AT THE FINISH LINE”. 7.5 – added examples of typical course designations. Appendix 1 – added wind directions arrow. Appendix 3 – added note 4. 8.6 – added description for the course heading(s)
Rev 2 – Mar-2-05	Added info for the DAM series: para 8.7, Marks: PP, D3, S9. In starting signals table “-6” info. Changed: 8.5 added info for no fleet designation
Rev 3 – Jun-19-05	Removed the schedule of races from the sailing instructions and made the instructions generic. Added info for the “0” mark (starting line mark used as a mark of the course). Radio communication monitored on channel 68.
Rev 4 – Nov-08-05	In 16.3 added “see radio communications. In section 15 radio channel 69 was 68. In section 15 BBC RC to use channel 69 and CLYTC RC to use channel 71. Added 13.2. I section 8.7.3 added additional examples. After note 6.3 added note “MJ”. In 6.3 flag “Numeral 1” was flag “Numeral 2”, and flag “Numeral 2” was flag “Numeral 1”.
Rev 5 – Jan-12-06	Added: 8.7.4, 13.5, 8.7.3 course example – B 181-9-0-181 (<i>this course is equivalent to a “TW”</i>) figure for the gate in appendix 1, 11.1 – ref to gate, 10.11 added definition for the gate, Removed: 12.5 – Boats shall pass between the race committee boat signalling the change of the next leg and the nearby mark, leaving the mark to port and the race committee boat to starboard.
Rev 6 – Apr-20-06	8.3 Read: At the discretion of the race committee the course “T” (Triangle), and “O” (Olympic), along with numeric modifies may be used. If these courses are designated the race committee will in addition to the permanent marks of the lake use alternate (Jibe) marks. See “Jibe Mark” (9.3)
Rev 7 – Jan-8-07	Removed reference to channel 69. Race committee contact info changed. Added special sailing instruction for all Sunday and Saturday Night Series races sections 18 thru 22.
Rev 8 – Jan-08	18.3.1 added “Unless otherwise posted”
Rev 9 – Jul-15	General revisions to change Sis to recognize 2013-2016 racing rules of sailing. Added updates per general updates included in weekly email notices of race. Updated marks and respective locations. Removed subsections for “Dam”, Summer Saturday Night” and Fall Sunday” Series and combined into general instructions.

Chandlers Landing BayView Yacht Clubs 2016 Sailing Instructions

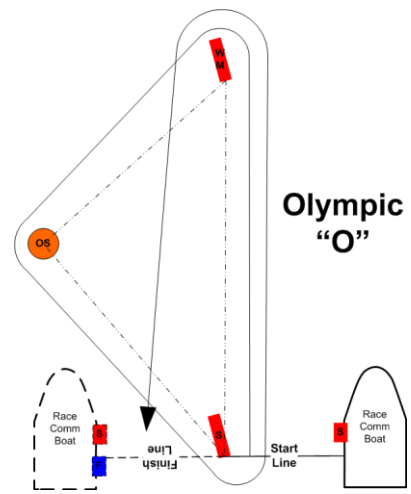
Appendix 1: Courses



"W" - Windward

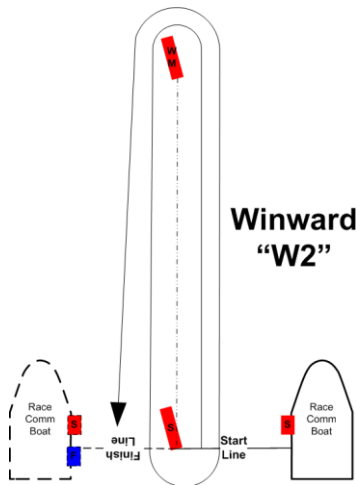


"T" - Triangle

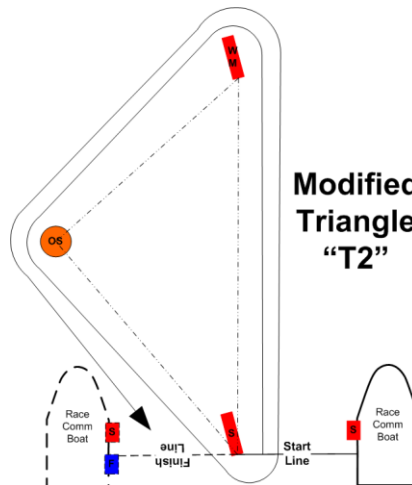


"O" - Olympic

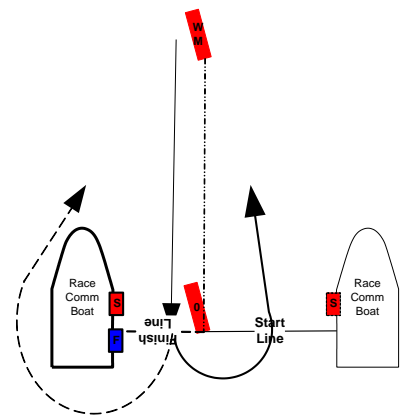
Modified Courses



"W2" - Winward (2 laps)



"T2" -



Gate

Down-wind Start

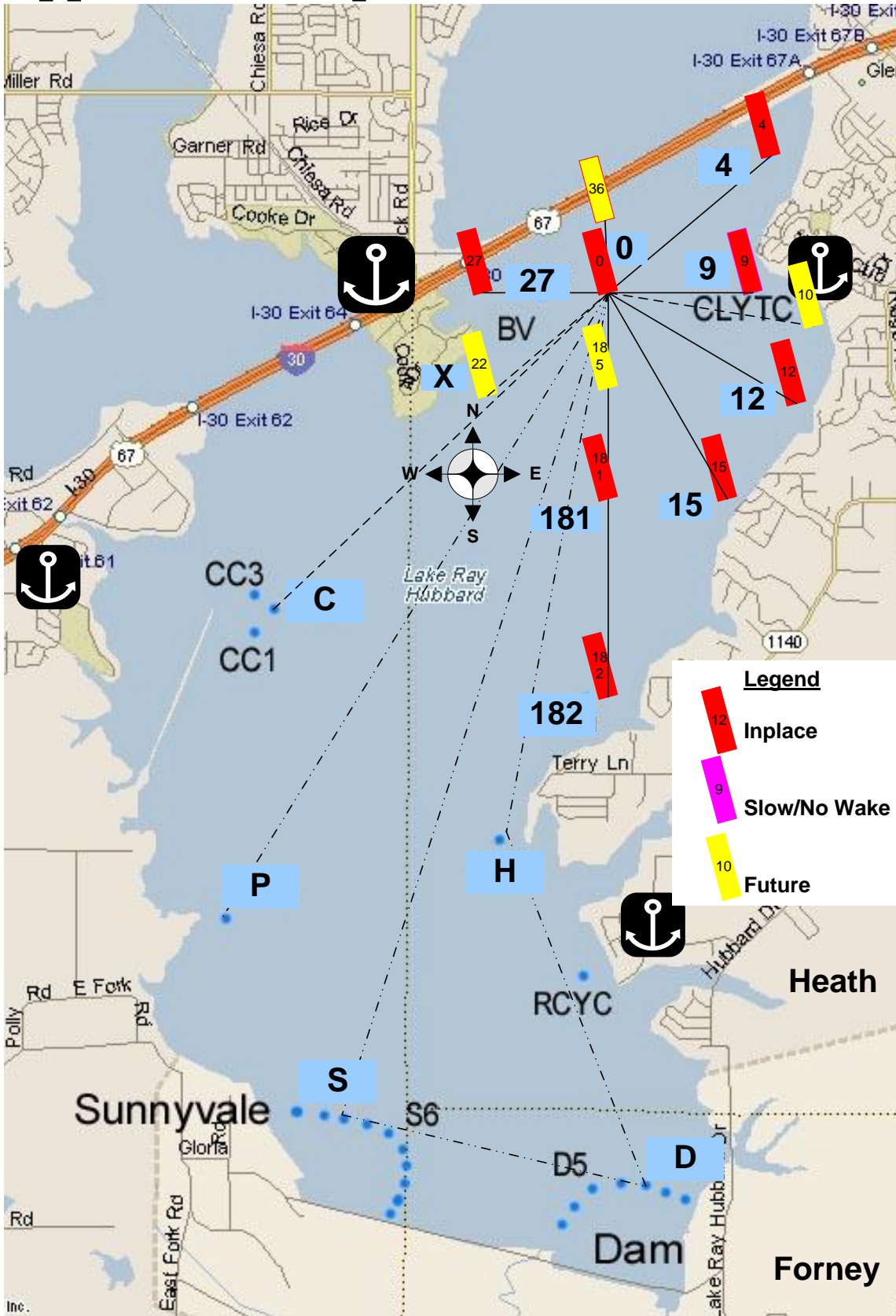


Up-wind Start

**Wind Direction for all courses
described on this sheet.**

*Chandlers Landing BayView Yacht Clubs
2016 Sailing Instructions*

Appendix 2: Map - Lake Marks



All mark designations used on the above map represent the “compass bearing ÷ 10” from the “S” mark to that mark.

Chandlers Landing BayView Yacht Clubs

2016 Sailing Instructions

Appendix 3: Locations – Lake Marks

Notes:

1. Marks indicated (highlighted in yellow) are in the water, and have been updated.
2. Marks indicated (highlighted in blue) will be added in the near future.
3. Marks not highlighted have not been confirmed/validated
4. Location of the mark indicated is not yet known. Mark information yet to be validated.
5. The mark designation (numbers) used to label the marks represents” the compass heading divided by 10” to the mark from the “0” (Zero) mark.
6. All mark designations represent the compass bearing to the mark from mark ”0” divided by 10. The third digit of a mark designation represents the distance to the mark from mark ”S”.
7. Mark ”D3” and ”S3” are the third marks from the East and West shores respectively defining the the spillway and pumping areas on the south end of the lake.
8. The mark designation ”S” will only be used in posting a course to Sunnysvale. When posting a course using the start-line mark as a mark to be rounded the designation ”0” shall be used.
9. Mark ”0W” may be referred to as ”S”. This is the original starting line mark and the mark from which all compass bearings are based to all other marks.
10. Mark ”0E” shall not be used as a turning mark of a course except when used as one end of a gate.

Mark - Waypoint	Latitude		Longitude		To/From
(# = Deg frm "S" - 100)	Deg	Mins	Deg	Mins	0(start)W
0(start)W	32	52.688	96	29.877	0
4	32	53.332	96	29.161	0.88
12	32	52.292	96	29.043	0.8
15	32	51.818	96	29.277	1.01
27	32	52.667	96	30.599	0.61
181	32	51.685	96	29.963	1.01
182	32	50.705	96	30.018	1.99
0(start)E	32	52.712	96	29.780	0.08
9-.5 ©	32	52.657	96	29.138	0.62
D	32	48.349	96	29.688	4.34
H	32	50.092	96	30.614	2.67
P	32	49.609	96	32.183	3.64
S	32	48.683	96	31.702	4.29

***Chandlers Landing BayView Yacht Clubs
2016 Sailing Instructions***

Registration Form:

Please return the below registration to the race committee at the conclusion of the days race or email to roy@rkuipers.com. A Completed registration form is required if you want to be correctly scored in this series. If your boat has multiple sail numbers please list all that apply.

Yacht Name: _____

Bow No: _____

Sail No(s): _____

Spin No(s): _____

Boat Type: _____

Skippers Name: _____ Fleet: AS, A, B, MJ

Address: _____

City, State/Zip: _____

Phone: (_____)-_____ Mobile Phone: (_____)-_____

Email Address: _____

Crew Information:

Name	Address	Phone	Email