

NO-DISCHARGE ZONE
(see note Z)

232 m (6.2 nm)

251 m (6.9 nm)

250 m (6.9 nm)

250 m (6.9 nm)

250 m (6.9 nm)

250 m (6.9 nm)

250 m (6.9 nm)

250 m (6.9 nm)

250 m (6.9 nm)

NO-DISCHARGE
(see note Z)

250 m (6.9 nm)

250 m (6.9 nm)

250 m (6.9 nm)

250 m (6.9 nm)

250 m (6.9 nm)

250 m (6.9 nm)

250 m (6.9 nm)

250 m (6.9 nm)

250 m (6.9 nm)

NO-DISCHARGE
(see note Z)

250 m (6.9 nm)

250 m (6.9 nm)

250 m (6.9 nm)

250 m (6.9 nm)

250 m (6.9 nm)

250 m (6.9 nm)

250 m (6.9 nm)

250 m (6.9 nm)

250 m (6.9 nm)

NO-DISCHARGE
(see note Z)

250 m (6.9 nm)

250 m (6.9 nm)

250 m (6.9 nm)

250 m (6.9 nm)

250 m (6.9 nm)

250 m (6.9 nm)

250 m (6.9 nm)

250 m (6.9 nm)

250 m (6.9 nm)

NO-DISCHARGE
(see note Z)

250 m (6.9 nm)

250 m (6.9 nm)

250 m (6.9 nm)

250 m (6.9 nm)

250 m (6.9 nm)

250 m (6.9 nm)

250 m (6.9 nm)

250 m (6.9 nm)

250 m (6.9 nm)

NO-DISCHARGE
(see note Z)

250 m (6.9 nm)

250 m (6.9 nm)

250 m (6.9 nm)

250 m (6.9 nm)

250 m (6.9 nm)

250 m (6.9 nm)

250 m (6.9 nm)

250 m (6.9 nm)

250 m (6.9 nm)

NO-DISCHARGE
(see note Z)

250 m (6.9 nm)

250 m (6.9 nm)

250 m (6.9 nm)

250 m (6.9 nm)

250 m (6.9 nm)

250 m (6.9 nm)

250 m (6.9 nm)

250 m (6.9 nm)

250 m (6.9 nm)

NO-DISCHARGE
(see note Z)

250 m (6.9 nm)

250 m (6.9 nm)

250 m (6.9 nm)

250 m (6.9 nm)

250 m (6.9 nm)

250 m (6.9 nm)

250 m (6.9 nm)

250 m (6.9 nm)

250 m (6.9 nm)

NO-DISCHARGE
(see note Z)

250 m (6.9 nm)

250 m (6.9 nm)

250 m (6.9 nm)

250 m (6.9 nm)

250 m (6.9 nm)

250 m (6.9 nm)

250 m (6.9 nm)

250 m (6.9 nm)

250 m (6.9 nm)

NO-DISCHARGE
(see note Z)

250 m (6.9 nm)

250 m (6.9 nm)

250 m (6.9 nm)

250 m (6.9 nm)

250 m (6.9 nm)

250 m (6.9 nm)

250 m (6.9 nm)

250 m (6.9 nm)

250 m (6.9 nm)

NO-DISCHARGE
(see note Z)

250 m (6.9 nm)

250 m (6.9 nm)

250 m (6.9 nm)

250 m (6.9 nm)

250 m (6.9 nm)

250 m (6.9 nm)

250 m (6.9 nm)

250 m (6.9 nm)

250 m (6.9 nm)

NO-DISCHARGE
(see note Z)

250 m (6.9 nm)

250 m (6.9 nm)

250 m (6.9 nm)

250 m (6.9 nm)

250 m (6.9 nm)

250 m (6.9 nm)

250 m (6.9 nm)

250 m (6.9 nm)

250 m (6.9 nm)

NO-DISCHARGE
(see note Z)

250 m (6.9 nm)

250 m (6.9 nm)

250 m (6.9 nm)

250 m (6.9 nm)

250 m (6.9 nm)

250 m (6.9 nm)

250 m (6.9 nm)

250 m (6.9 nm)

250 m (6.9 nm)

See Page 22

See Page 22

See Page 22

See Page 22

See Page 22

See Page 22

See Page 22

See Page 22

See Page 22

See Page 22

See Page 22

See Page 22

See Page 22

See Page 22

See Page 22

See Page 22

See Page 22

See Page 22

See Page 22

See Page 22

LIS019
N40° 59.59'
W073° 35.80'

LIS018
N40° 58.54'
W073° 37.96'

LIS021
N41° 00.19'
W073° 31.42'

LIS022
N40° 58.10'
W073° 32.81'

LIS159
N40° 55.45'
W073° 34.20'

LIS155
N40° 55.56'
W073° 30.25'

LIS008
N40° 52.97'
W073° 44.24'

LIS239
N40° 52.93'
W073° 42.98'

LIS158
N40° 55.45'
W073° 34.20'

LIS157
N40° 55.45'
W073° 34.20'

LIS156
N40° 55.45'
W073° 34.20'

LIS154
N40° 55.45'
W073° 34.20'

LIS153
N40° 55.45'
W073° 34.20'

LIS152
N40° 55.45'
W073° 34.20'

LIS151
N40° 55.45'
W073° 34.20'

LIS150
N40° 55.45'
W073° 34.20'

LIS149
N40° 55.45'
W073° 34.20'

LIS148
N40° 55.45'
W073° 34.20'

LIS147
N40° 55.45'
W073° 34.20'

LIS146
N40° 55.45'
W073° 34.20'

LIS145
N40° 55.45'
W073° 34.20'

LIS144
N40° 55.45'
W073° 34.20'

LIS143
N40° 55.45'
W073° 34.20'

LIS142
N40° 55.45'
W073° 34.20'

LIS141
N40° 55.45'
W073° 34.20'

LIS140
N40° 55.45'
W073° 34.20'

LIS139
N40° 55.45'
W073° 34.20'

LIS138
N40° 55.45'
W073° 34.20'

LIS137
N40° 55.45'
W073° 34.20'

LIS136
N40° 55.45'
W073° 34.20'

LIS135
N40° 55.45'
W073° 34.20'

LIS134
N40° 55.45'
W073° 34.20'

LIS133
N40° 55.45'
W073° 34.20'

LIS132
N40° 55.45'
W073° 34.20'

LIS131
N40° 55.45'
W073° 34.20'

LIS130
N40° 55.45'
W073° 34.20'

LIS129
N40° 55.45'
W073° 34.20'

LIS128
N40° 55.45'
W073° 34.20'

LIS127
N40° 55.45'
W073° 34.20'

LIS126
N40° 55.45'
W073° 34.20'

LIS125
N40° 55.45'
W073° 34.20'

LIS124
N40° 55.45'
W073° 34.20'

LIS123
N40° 55.45'
W073° 34.20'

LIS122
N40° 55.45'
W073° 34.20'

LIS121
N40° 55.45'
W073° 34.20'

LIS120
N40° 55.45'
W073° 34.20'

LIS119
N40° 55.45'
W073° 34.20'

LIS118
N40° 55.45'
W073° 34.20'

LIS117
N40° 55.45'
W073° 34.20'

LIS116
N40° 55.45'
W073° 34.20'

LIS115
N40° 55.45'
W073° 34.20'

LIS114
N40° 55.45'
W073° 34.20'

LIS113
N40° 55.45'
W073° 34.20'

LIS112
N40° 55.45'
W073° 34.20'

LIS111
N40° 55.45'
W073° 34.20'

LIS110
N40° 55.45'
W073° 34.20'

LIS109
N40° 55.45'
W073° 34.20'

LIS108
N40° 55.45'
W073° 34.20'

LIS107
N40° 55.45'
W073° 34.20'

LIS106
N40° 55.45'
W073° 34.20'

LIS105
N40° 55.45'
W073° 34.20'

LIS104
N40° 55.45'
W073° 34.20'

LIS103
N40° 55.45'
W073° 34.20'

LIS102
N40° 55.45'
W073° 34.20'

LIS101
N40° 55.45'
W073° 34.20'

LIS100
N40° 55.45'
W073° 34.20'

LIS99
N40° 55.45'
W073° 34.20'

LIS98
N40° 55.45'
W073° 34.20'

LIS97
N40° 55.45'
W073° 34.20'

LIS96
N40° 55.45'
W073° 34.20'

LIS95
N40° 55.45'
W073° 34.20'

LIS94
N40° 55.45'
W073° 34.20'

LIS93
N40° 55.45'
W073° 34.20'

LIS92
N40° 55.45'
W073° 34.20'

LIS91
N40° 55.45'
W073° 34.20'

LIS90
N40° 55.45'
W073° 34.20'

LIS89
N40° 55.45'
W073° 34.20'

LIS88
N40° 55.45'
W073° 34.20'

LIS87
N40° 55.45'
W073° 34.20'

LIS86
N40° 55.45'
W073° 34.20'

LIS85
N40° 55.45'
W073° 34.20'

LIS84
N40° 55.45'
W073° 34.20'

LIS83
N40° 55.45'
W073° 34.20'

LIS82
N40° 55.45'
W073° 34.20'

LIS81
N40° 55.45'
W073° 34.20'

LIS80
N40° 55.45'
W073° 34.20'

LIS79
N40° 55.45'
W073° 34.20'

LIS78
N40° 55.45'
W073° 34.20'

LIS77
N40° 55.45'
W073° 34.20'

LIS76
N40° 55.45'
W073° 34.20'

LIS75
N40° 55.45'
W073° 34.20'

LIS74
N40° 55.45'
W073° 34.20'

LIS73
N40° 55.45'
W073° 34.20'

LIS72
N40° 55.45'
W073° 34.20'

LIS71
N40° 55.45'
W073° 34.20'

LIS70
N40° 55.45'
W073° 34.20'

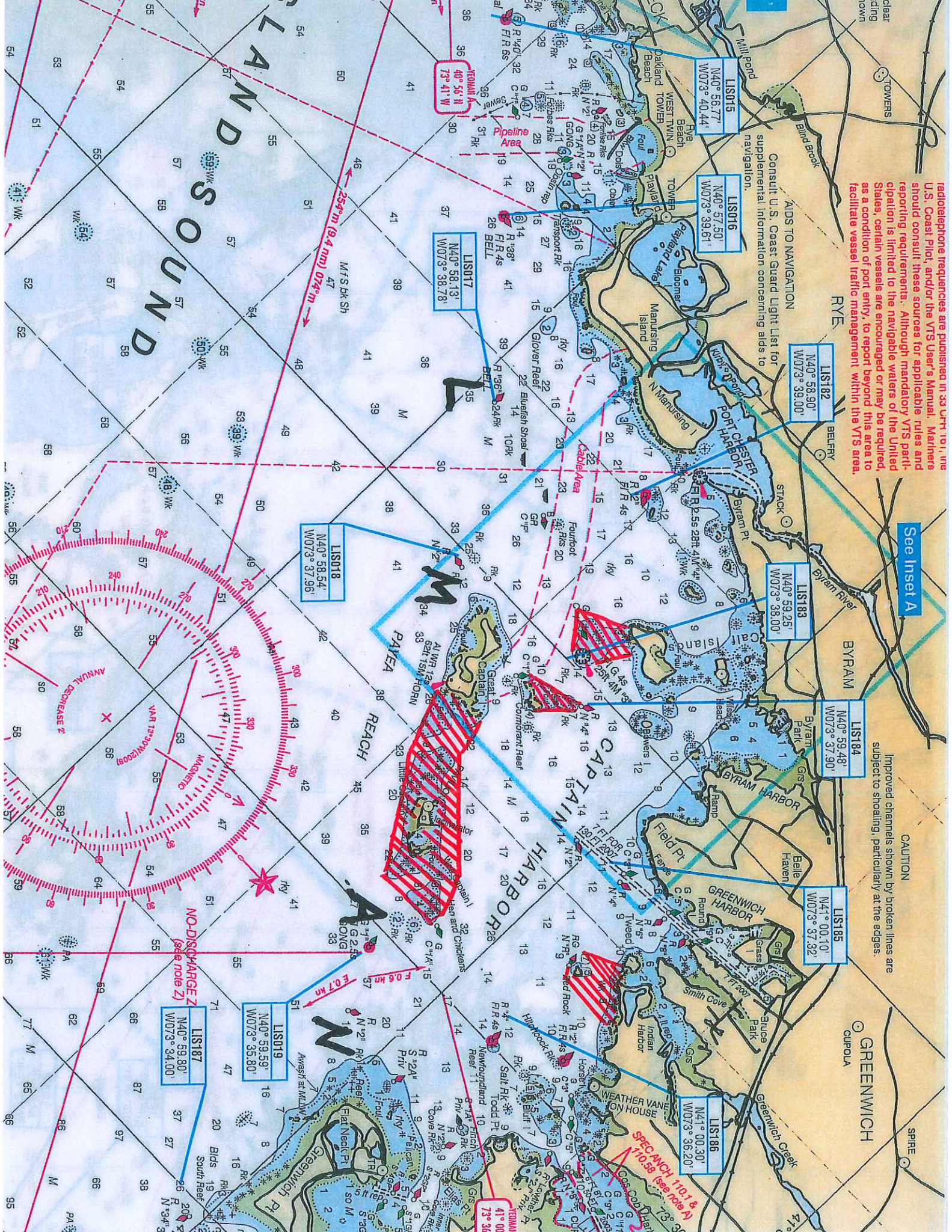
radiotelephone frequencies are published in 33 CFR 101.1, the U.S. Coast Pilot, and/or the VTS User's Manual. Mariners should consult these sources for applicable rules and reporting requirements. Although mandatory VTS participation is limited to the navigable waters of the United States, certain vessels are encouraged or may be required, as a condition of port entry, to report beyond this area to facilitate vessel traffic management within the VTS area.

Consult U.S. Coast Guard Light List for supplemental information concerning aids to navigation.

See Inset A

Improved channels shown by broken lines are subject to shoaling, particularly at the edges.

CAUTION



LIST182
N40° 58.90'
W073° 39.00'

LIST183
N40° 59.25'
W073° 38.00'

LIST184
N40° 59.48'
W073° 37.90'

LIST185
N41° 00.10'
W073° 37.32'

LIST186
N41° 00.30'
W073° 36.20'

LIST017
N40° 58.13'
W073° 38.78'

LIST018
N40° 58.54'
W073° 37.96'

LIST019
N40° 59.59'
W073° 35.80'

LIST187
N40° 59.80'
W073° 34.00'

TEOMANI A
40° 55' N
73° 41' W

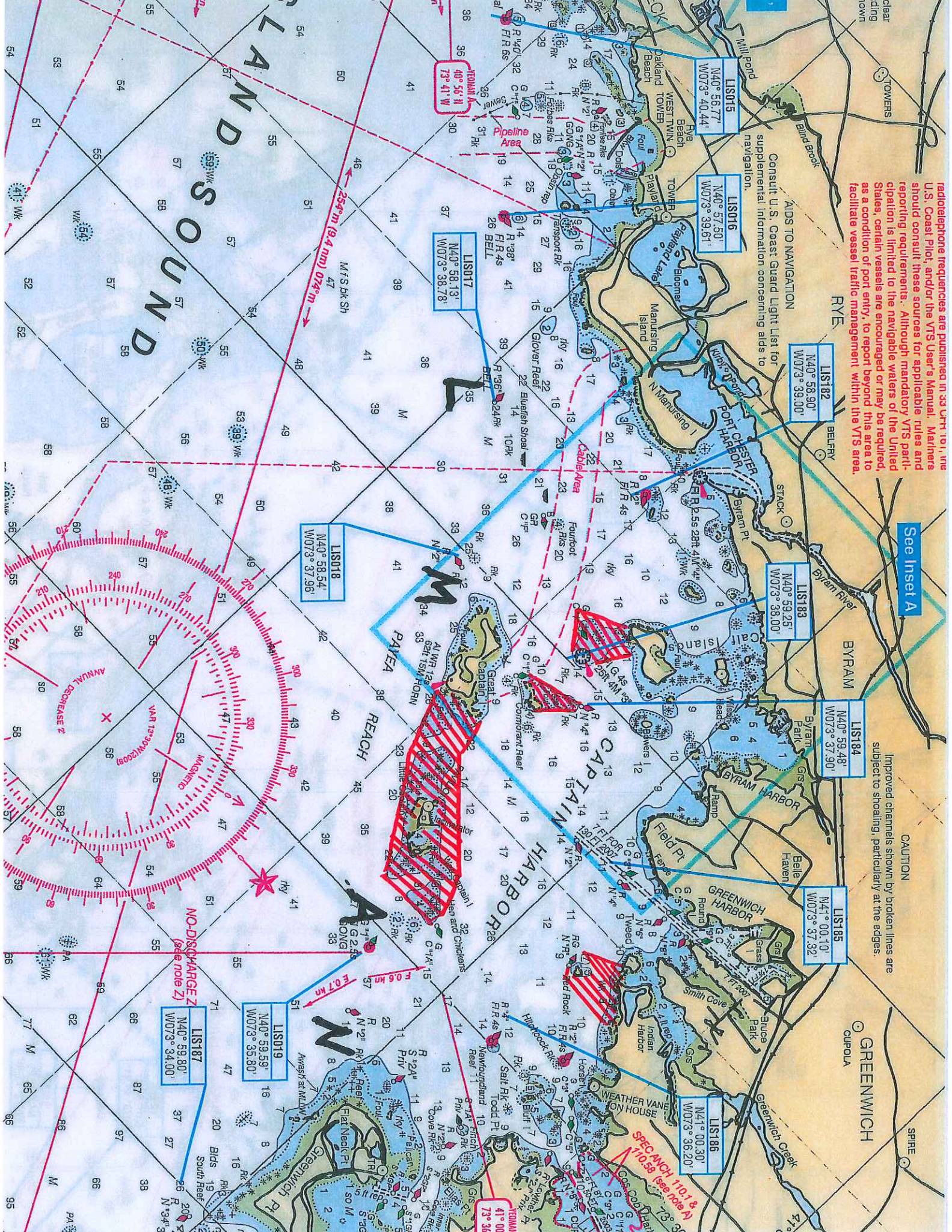
LIST015
N40° 56.77'
W073° 40.44'

LIST016
N40° 57.50'
W073° 39.61'

TEOMANI A
41° 00'
73° 36'

TEOMANI A
41° 00'
73° 36'

TEOMANI A
41° 00'
73° 36'



LIST182
N40° 58.90'
W073° 39.00'

LIST183
N40° 59.25'
W073° 38.00'

LIST184
N40° 59.48'
W073° 37.90'

LIST185
N41° 00.10'
W073° 37.32'

LIST186
N41° 00.30'
W073° 36.20'

LIST017
N40° 58.13'
W073° 38.78'

LIST018
N40° 58.54'
W073° 37.96'

LIST019
N40° 59.59'
W073° 35.80'

LIST187
N40° 59.80'
W073° 34.00'

TEOMANI A
40° 55' N
73° 41' W

LIST015
N40° 56.77'
W073° 40.44'

LIST016
N40° 57.50'
W073° 39.61'

TEOMANI A
41° 00'
73° 36'

TEOMANI A
41° 00'
73° 36'

TEOMANI A
41° 00'
73° 36'