



**Halloween Howl**  
**22-23 October 2016**  
Organizing Authority: Annapolis Yacht Club  
Annapolis, Maryland, USA  
Event Website: [www.annapolisyc.com/racing](http://www.annapolisyc.com/racing)



## SAILING INSTRUCTIONS

### 1 RULES

- 1.1 The regatta will be governed by the rules as defined in *The Racing Rules of Sailing (RRS)*.
- 1.2 Boats may not protest other boats for breaking sailing instructions (SI) marked [NP] (no protest). This changes RRS 60.1(a). Penalties for breaking SI marked [DP] (discretionary penalty) or for breaking RRS 55 may be less than disqualification if the protest committee so decides.
- 1.3 The "USODA Conditions for Sanctioned Regattas and Championships" will apply.

### 2 NOTICES TO COMPETITORS

Notices to competitors will be posted on the official notice board at the AYC Junior Sailing Center.

### 3 CHANGES TO SAILING INSTRUCTIONS

Any change to the SI will be posted before 0900 on the day it will take effect, except that any change to the schedule of races will be posted by 2000 on the day before it will take effect.

### 4 SIGNALS MADE ASHORE

- 4.1 Signals made ashore will be displayed from the flagpole at the Junior Sailing Center.
- 4.2 When flag AP is displayed ashore, '1 minute' is replaced with 'not less than 60 minutes' in the race signal AP.

### 5 SCHEDULE OF RACES

- 5.1 The event schedule will be:

Date	Time	
22 Oct	0830-0930	Registration
	0930	Competitors' Meeting
	0945	Green Fleet Competitors' Meeting
	1030	First warning signal
	After racing	Costume party, chili bar, and trick-or-treating
23 Oct	0930	Competitors' Meeting
	1030	First warning signal
	1500	No warning signal will be made after this time
	After racing	Prizegiving at the AYC Junior Sailing Center

- 5.2 The race committee will run as many races as practical each day.

### 6 CLASS FLAGS

The class flag for the RWB fleet will be a flag with an Optimist class logo. The class flag for the Green Fleet will be a solid green flag.

### 7 RACING AREA

The racing area for the RWB Fleet will be in the Chesapeake Bay near the mouth of the Severn River. The Green Fleet will sail in the Severn River near the mouth of Spa Creek. See Attachment 1, Race Area.

## 8 THE COURSES

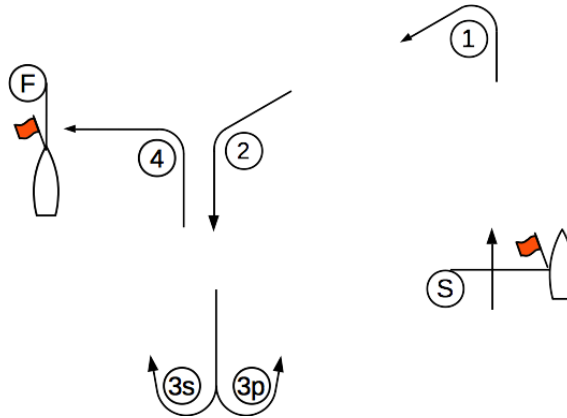
The courses are shown in the diagram below (not to scale).

---

### Red/White/Blue Fleet Course

The mark rounding order will be:

Start, 1, 2, 3s/3p, 4, Finish.

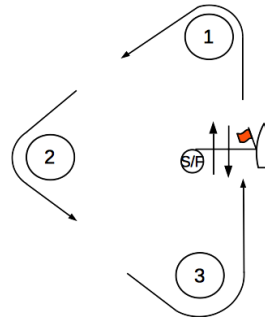


---

### Green Fleet Course

The mark rounding order will be:

Start, 1, 2, 3, Finish.



---

## 9 MARKS

- 9.1 Starting marks, finishing marks will be yellow cylinders. Marks 1, 2, 3s, 3p will be red tomatoes. Mark 4 will be a yellow cylinder.
- 9.2 A race committee starting or finishing boat may set a stand-off buoy. When present, this stand-off buoy, the line attaching it to the race committee boat, and the race committee boat are all part of the starting or finishing mark.

## 10 THE START

- 10.1 The starting line will be between the staff or halyard with an orange flag displayed on the race committee signal boat and the course side of the starting mark.
- 10.2 A boat starting later than 10 minutes after her starting signal will be scored Did Not Start without a hearing. This changes RRS A4.
- 10.3 If flag U has been displayed as the preparatory signal, no part of a boat's hull, crew, or equipment shall be in the triangle formed by the ends of the starting line and the first mark during the last minute before her starting signal. If a boat breaks this rule and is identified, she shall be disqualified without a hearing but not if the race is restarted or resailed or postponed or abandoned before the starting signal. This changes RRS A5. When flag U is used as the preparatory signal, RRS 29.1 does not apply.

## 11 RECALLS

The race committee may attempt to announce boats identified as OCS, UFD, or BFD by hailing their sail numbers. Failure to hear or receive the hail, timeliness of the hail or the order of sail numbers hailed, will not be grounds for redress. This changes RRS 62.1(a).

## **12 CHANGE OF THE NEXT LEG OF THE COURSE**

The race committee may change the position of any mark after the starting signal, provided that no boat is on that leg of the course. There will be no signal for any change. This changes RRS 33.

## **13 THE FINISH**

The finishing line will be between a staff or halyard displaying an orange flag on the race committee finish boat and the course side of the finishing mark.

## **14 TIME LIMITS**

The time limit is 90 minutes. Boats failing to finish within 20 minutes after the first boat in her class sails the course and finishes, and not subsequently retiring, penalized or given redress, will be scored Time Limit Expired (TLE) without a hearing. This changes RRS 35, A4 and A5.

## **15 PROTESTS AND REQUESTS FOR REDRESS**

- 15.1 Protest forms are available at the protest desk located in the AYC Sailing Office. Protests and requests for redress or reopening shall be delivered there within the appropriate time limit.
- 15.2 The protest time limit is 45 minutes after the race committee signal boats docks. The race committee will post the protest time limit.
- 15.3 The race committee will post a list of race committee scoring actions no later than the protest time limit.
- 15.4 The protest notices required by RRS 63.2, and the notification of protests by the race committee required by RRS 61.1(b), will be posted on the official notice board as soon as possible after a protest has been delivered, but not later than 30 minutes after the protest time limit.
- 15.5 Requests for redress relating to possible scoring errors shall be made no later than one hour after the score is posted. This changes the first sentence of RRS 62.2. Requests for redress relating to possible scoring errors will initially be reviewed by the race committee before being scheduled for hearing by the protest committee. This instruction changes RRS 63.1.
- 15.6 Requests for redress relating to an OCS or starting penalty should state the procedural error the competitor believes the race committee may have made. Further, the competitor will be expected to establish that he or she started properly.
- 15.7 As soon as practicable after the protest time limit, the protest committee will post a notice to inform competitors of the schedule and location of hearings in which they are parties or named as witnesses. Hearings will be held at the AYC Sailing Office.

## **16 SCORING**

- 16.1 RRS Appendix A4, Low Point System, will apply.
- 16.2 One completed race is required to constitute a series.
- 16.3 When fewer than six (6) races have been completed a competitor's series score will be the total of all of her race scores. When from six (6) to ten (10) races have been completed, a competitor's series score will be the total of her races scores excluding her worst score. When eleven (11) or more races have been completed a competitor's series score will be the total of her race scores excluding her two (2) worst scores.
- 16.4 Boats to be scored TLE will be scored points equal to the number of boats finishing within the finishing window plus two points by the race committee without a hearing. This changes RRS A4.2 and A5.

## **17 [DP] SAFETY REGULATIONS**

- 17.1 Competitors shall wear USCG approved Type III Personal Flotation Devices (PFDs) with a whistle attached to the PFD at all times while afloat except for brief periods while removing or adding clothing. Inflatable type PFDs and "floatation aids" (e.g. Zhik, Baltic) are not permitted.
- 17.2 A competitor retiring from a race shall notify a race committee boat or safety boat as soon as practicable.
- 17.3 Each boat shall have a secure loop in the end of its bow line.

17.4 The race committee may require a competitor to retire from racing if the competitor is determined to be a risk to their own or others' safety.

**18 [DP] EQUIPMENT AND MEASUREMENT**

Boats are allowed only one hull, dagger-board, rudder (including tiller and extension), mast, boom, sprit, and sail during the regatta. Substitution of damaged equipment must be approved by the race committee as soon as practical.

**19 [DP] COACH AND SUPPORT BOAT REGULATIONS**

19.1 Coach boats shall carry a working VHF radio and monitor the race committee on VHF channel 71.

19.2 Coach and support boats shall not display distinctive markings or signaling apparatus, or any flags other than their ensign while any boats are racing.

19.3 Coach and support boats shall follow the instructions of race committee, safety, protest committee, and race management boats.

19.4 Coach and support boats shall not tie up to or congregate around any aid to navigation, such as buoys or channel markers.

19.5 Coaches shall wear USCG approved Type III Personal Flotation Devices (PFDs) at all times while afloat except for brief periods while removing or adding clothing. Inflatable type PFDs and "floatation aids" (e.g. Zhik, Baltic) are not permitted.

19.6 All coach and support boats shall stay clear of the racing area at all times while boats are racing, except where permitted in this instruction.

19.7 All coach and support boats shall further stay more than 100 yards away from any racing boat and move slowly and with minimal wake.

19.8 Boats shall not have any communication or assistance while afloat with coaches and support boats that are not in compliance with SI 19.

**20 PRIZES**

20.1 Prizes will be awarded to 1st through 3rd for Opti White, Blue, Red and Green.

20.2 Prizes will be awarded to 1st through 5th Overall in the Opti RWB fleet.

20.3 A prize will be awarded to the top girl in the Opti RWB Fleet.

20.4 A prize will be awarded to the winner of the Best Costume Competition (held Saturday after Racing).

20.5 All Green fleet competitors will receive participation awards.

20.6 Additional prizes may be awarded at the discretion of the organizing authority.

**21 DISCLAIMER OF LIABILITY**

Competitors participate in the regatta entirely at their own risk. See RRS 4, Decision to Race. The organizing authority will not accept any liability for material damage or personal injury or death sustained in conjunction with or prior to, during, or after the regatta.

# ATTACHMENT 1 - RACE AREA

