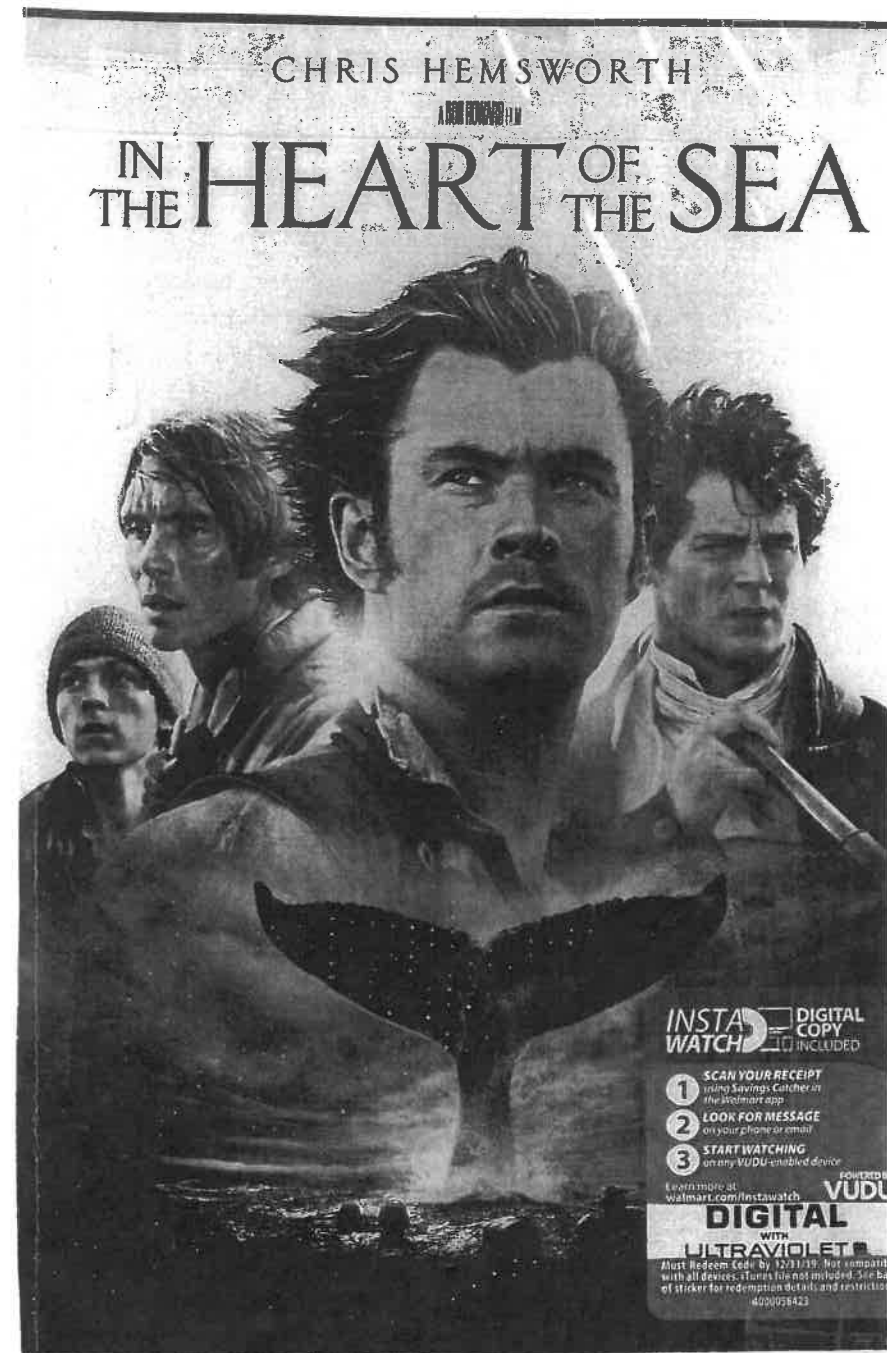


## 2016 Great Pumpkin Nautical Trivia Quiz



## 2016 Great Pumpkin Nautical Trivia Quiz

Boat Name \_\_\_\_\_

No. of Crew \_\_\_\_\_

After losing Nantucket's whaling ship "Essex" (the true story that became Moby Dick), Captain Pollard captained the whaling ship "Two Brothers". After putting this ship on "French Frigate Shoals," he returned to Nantucket to do what?

- a. Captained whaling ship "Arabella" until 1897
- b. Captained a passenger steamer from Nantucket to Boston
- c. Became the curator of the Nantucket Whaling Museum
- d. Night Watchman at the Nantucket Inn

In "Moby Dick" Captain Ahab nailed a Spanish Doubloon to the main mast to inspire the look-outs to keep a keen eye out for the 'white whale'. It would be given to the crew who saw Moby Dick first. Who saw the white whale first and claimed the gold?

- a. Starbuck
- b. Ismael
- c. Queequeg
- d. Captain Ahab

US Steel Company built an Ice Breaker and leased it to the US Coast Guard for one dollar per year so the waters of Lakes Superior, Michigan and Huron could be kept clear and steel ore could be delivered from Canada down to the steel mills in the US. The "Mackinaw" is now a museum. What insurance policy did US Steel Company use to make sure this boat stayed in the fresh water of the Great Lakes?

- a. Made an aluminum through hull fitting that would dissolve in salt water.
- b. A Lloyds of London insurance policy for the Great Lakes only.
- c. Built the hull 10 inches wider than the locks at Buffalo, NY
- d. Built it higher than the longest bridge on the St. Lawrence.

The 750 nm 2016 "Race to Alaska" was won by San Francisco Bay Area catamaran Bridge Runner team of Randy Miller, Ian Andrews and Colin Dunphy, known as "Mad Dog Racing". They set a new course record of 3 days 20 hours and won \$10,000 first place prize money. When the 2015 race winning trimaran "Team Elsie Piddock" owner Al Hughes was handed his \$10,000 prize money at the Ketchikan trophy presentation, he was quoted as saying?

- a. This will go a long way to pay race expenses
- b. This will help pay off my boat loan.
- c. I will donate \$1000 each to 10 Northwest yacht club junior programs
- d. I will return the prize money to make sure the race is funded for 2016

This year, 2016, a new around the island course record of under one hour was established by a new GS 32 Foiling Catamaran sailing on Narragansett Bay, Rhode Island. The crew won their weight in Rum! The "Mount Gay Rum Around James Town Race" 32-mile course is around what Island?

- a. Prudence
- b. Connicut
- c. James Town
- d. Patience

Stan Honey was the navigator on Nolan Bushnell's "Charlie" during the 1983 Trans Pac race from LA to Honolulu. In the clear ocean night's sky, he watched the satellites traveling from North to South. "Atari"'s founder funded Stan's "start-up" to produce and market their new navigation idea. While not a big seller, Stan did sell one of the patents for \$25 million. It is in constant use today. What navigation principal was used in this new system?

- a. DRM, dead reckoning mapping
- b. DSR, doppler shift mapping
- c. LIN, loran C intuitive navigation
- d. GPS, satellite navigation

We all know about the famous song and sinking of the 729 foot long bulk carrier Edmond Fitzgerald. Where did the name for this ship "Edmund Fitzgerald" come from? Hint: Who owned the boat?

- a. insurance carrier's chairman Edmond Fitzgerald
- b. Kennedy family investment on the Fitzgerald side
- c. financed by Fitzgerald family of Edmondton, Canada
- d. the designers and investors last names

The One Ton Cup was revived in 2016 and raced with pre-1995 IOR sail boats in Breskens, Netherland. Racing from August 25 to 28 attracted over 25 boats using what rating rule for scoring?

- a. IOR
- b. IRC
- c. IMS
- d. ORR

In 2016 the City of Richmond's "Public Art Program" celebrated a new waterfront art sculpture located on Cutting Boulevard, Point Richmond. This steel sculpture is of what local subject?

- a. Rosie the Riveter sculpture
- b. Columbian Sculpture
- c. Sigman Sculpture
- d. El Toro hull Sculpture

Close to the end of the 20th century, the last whaling station in the United States burned down. It may have been arson. It was on Point San Pablo in Richmond, California. When was the last whale brought ashore?

- a. 1936
- b. 1948
- c. 1960
- d. 1972