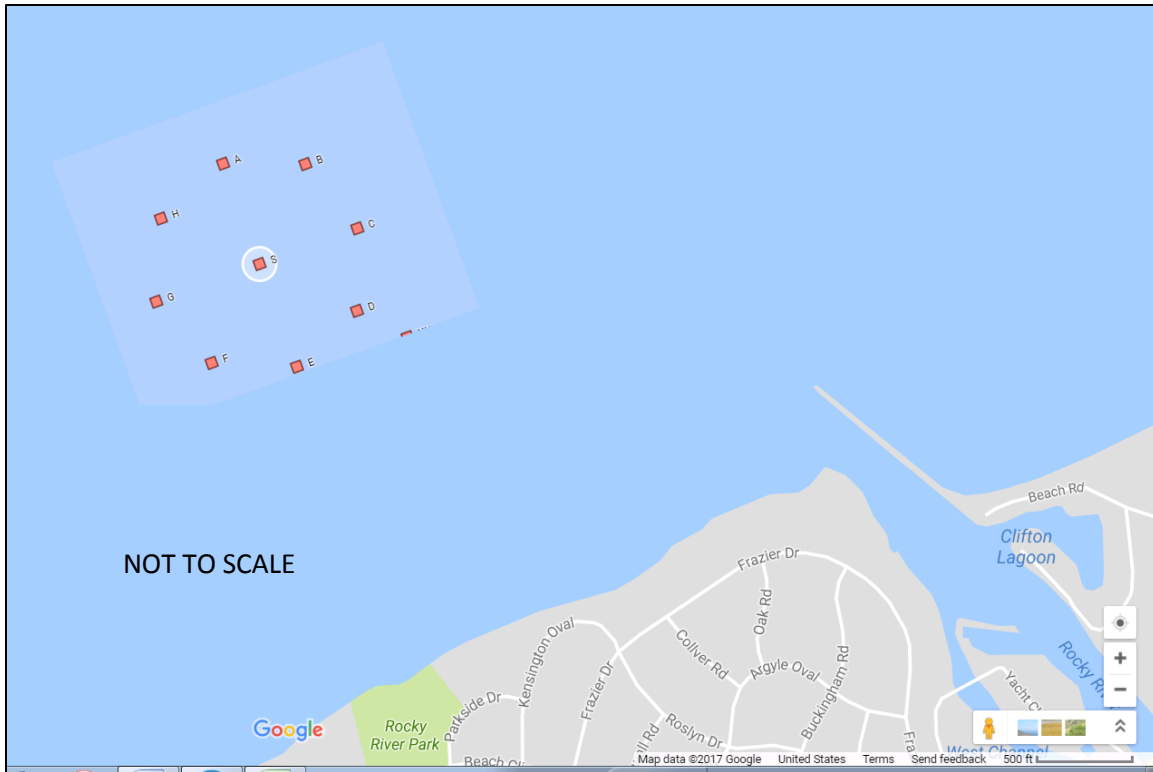


COURSES – ILLUSTRATION 1

Random Leg Course

Friday July 21, 2017



Marks to be rounded in the following order:

Mark	Approx. Bearing to Next Mark	Round to:	Distance to Next Mark
Start	Upwind		0.75Nm
Orange Tet	?	P/S (As displayed)	?
F	325	S	0.66
G	75	S	0.87
S	120	S	0.87
D	Finish	S	Finish
	Mark	Approx. Coordinates	
	F	41.30.180 N 81.51.380 W	
	G	41.30.630 N 81.52.000 W	
	S	41.30.960 N 81.50.920 W	
	D	41.30.630 N 81.49.830 W	

Orange Tet is to be rounded either to port or starboard depending on the course to the next mark. Before the start, the Race Committee will display either a RED flag (port rounding) or GREEN flag (starboard rounding) from the starboard corner of the Race Committee Signal Boat.