



2017 MELGES²⁴
NORAM CHAMPIONSHIP
NORTH AMERICAN CHAMPIONSHIP
C A S C A D E L O C K S , O R
JULY 19-22, 2017



The Organizing Authority is the Columbia Gorge Racing Association (CGRA)

SAILING INSTRUCTIONS

1. RULES

- 1.1. The regatta shall be governed by rules as defined by the Racing Rules of Sailing (RRS) and the Melges²⁴ Class Rules. Appendix T - Arbitration - will apply.
- 1.2. The following prescriptions of the national authority (US Sailing) will not apply; 63.2 and 63.4.
- 1.3. The rules will be changed as follows:
 - a. The Race Committee (RC) will use VHF radio Channel 69 to communicate to the fleet. Failure to make broadcasts or failure to hear the broadcast shall not be grounds for granting redress.
 - b. The preamble to Part 4 and rule 40 are changed such that competitors shall wear personal flotation devices, except briefly while changing or adjusting clothing or personal equipment. Wet suits and dry suits are not personal flotation devices (code flag Y need not be displayed). Competitors' attention is drawn to the US Federal Law § Title 33, Part 175, Subpart B Personal Floatation Devices that may be enforced by local law enforcement agencies, which requires that while practicing for or racing in competition, each boat must carry for each competitor aboard, either a US Coast Guard-approved flotation device, or a flotation device that conforms to regulations of their own country.
 - c. Rule 44 shall apply except as modified in SI 13.
 - d. Rules 35, A4 and A5 are modified by SI 14.3.
- 1.4. Competitors shall not interfere with commercial traffic. Boats violating USCG Inland Navigation Rules, Part B, as stated in the Inland Navigation Rules Act of 1980 (Public Law 96-591, 94 Stat. 3415, 33 U.S.C. 2001-2038) or Boats that fail to comply promptly with signals from a race committee vessel to alter course, or that receives a 5 blast warning from a commercial vessel, will be subject to protest by the Race Committee and possible disqualification.

2. NOTICES TO COMPETITORS

- 2.1. Official Notices to competitors will be posted on the official regatta notice board located at the Regatta Office which is the building located at the beach near the point.
- 2.2. Notices may also be posted on Notice Board section of the Regatta Website at <http://melges24noramchampionship.com/notice-board/>.
- 2.3. Any questions concerning these sailing instructions, scoring, or any other racing issues shall be submitted in writing to the Race Office. Forms to submit inquiries are available there. All written inquiries and responses will be posted on the official notice board.

3. CHANGES TO SAILING INSTRUCTIONS

- 3.1. Any change to the Sailing Instructions will be posted before 0830 on the day the change will take effect; except that any change to the schedule of races will be posted by 2000 on the day before it will take effect.

4. SIGNALS MADE ASHORE

- 4.1. Signals made ashore will be displayed from the flagpole located on the jetty behind the CGRA Race Office.
- 4.2. When flag “AP” is displayed ashore, the warning signal for the next race will be made not less than 60 minutes after flag “AP” is lowered.

5. SCHEDULE

5.1.

Tuesday, July 18	0900-1700 1400-1600	Check-in and Crew Weigh-in at CGRA Race Office Practice Race
Wednesday, July 19	0830-1000 1000 1200	Race Office Open Competitors Meeting outside Race Office First Race Warning
Thursday, July 20	1100	First Race Warning
Friday, July 21	1100	First Race Warning
Saturday, July 22	1100 1500 1800	First Race Warning No Warning signal after this time Awards presentation outside Race Office

- 5.2. Subsequent races will be held as soon as possible after the end of the previous race. No more than three races per day will be scheduled unless otherwise determined necessary by the race committee for completion of the regatta.
- 5.3. The minimum number of races to constitute a regatta for each class is 3.
- 5.4. Flag “A” displayed, with no sound, while boats are finishing means “No more racing today.”

6. CLASS FLAG

- 6.1. The class flag will be red with the M24 insignia.

7. RACING AREA

- 7.1. The racing area shall be as depicted on Addendum “A”.

8. THE COURSES

- 8.1. The diagrams attached as Addendum “B” show the courses, including the approximate angles between legs, the order in which the marks are to be passed, and the side on which each mark is to be left.

- 8.2. The courses will be L, L2, W, W2, and WM. The course will be indicated by placards displayed on the Race Committee signal boat at the warning signal for that class.
- 8.3. When there is a gate, boats shall sail between the gate marks from the direction of the previous mark and subsequently complete their rounding around either of the gate marks.
- 8.4. If one of the gate marks is missing or absent, the mark in position shall be left to port.

9. MARKS

- 9.1. Marks of the course will be cylindrical yellow inflatable buoys.
- 9.2. A windward offset mark to be rounded to port shall be used in conjunction with mark 1, designated as mark 1a, and will be an orange inflatable buoy.

10. THE START

- 10.1. Races will be started using rule 26 with warning signals made 5 minutes before the starting signal.
- 10.2. The start line will be between the staff or boat mast from which an orange flag is displayed on the Race Committee signal boat at the starboard end, and the staff from which an orange flag is displayed on the pin boat at the port end.
- 10.3. Individual recalls will be signaled in accordance with rule 29.1. The Race Committee will attempt to broadcast the sail numbers of OCS boats on VHF Channel 69. The failure of any boat to hear the hail, an untimely hail of OCS boats, failure to hail any boats, and the order of the boats in the hail shall not be grounds for granting redress. The changes rule 62.1.

11. CHANGE OF THE POSITION OF THE NEXT MARK

- 11.1. To change the position of the next mark, the Race Committee will move the original mark. The change will be signaled before the leading boat has begun the leg, although the new mark may not be in position. Any mark to be rounded after rounding the moved mark, including the windward offset mark, may be relocated without further signaling to maintain the original course configuration.

12. THE FINISH

- 12.1. The finish line will be between the staff or boat mast from which an orange flag displayed on the Race Committee signal boat and the staff from which an orange flag is displayed on the pin boat.

13. PENALTY SYSTEM

- 13.1. The first two sentences of RRS Rule 44.1 are changed as follows: "A boat may take a One-Turn Penalty when she may have broken a rule of Part 2 or rule 31 when racing. However, when she may have broken a rule of Part 2 while in the zone around a mark other than a starting mark, her penalty shall be a Two-Turns Penalty."
- 13.2. Unless the course is shortened to finish at the windward mark, penalties while in the zone of the windward mark or on the offset leg may be delayed and taken as soon as possible on the downwind leg. This changes RRS Rule 44.2.

14. TIME LIMITS AND TARGET TIMES

- 14.1. The Target duration for each race will be 60-75 minutes. Failure to meet the target time will not be grounds for granting redress. This changes RRS 62.1(a)
- 14.2. The Time limit for the first boat to finish will be will be 120 minutes.
- 14.3. Boats failing to finish within 20 minutes after the first boat sails the course and finishes will be scored Did Not Finish without a hearing. This changes rules 35, A4 and A5.

15. PROTESTS AND REQUESTS FOR REDRESS

- 15.1. Protests forms will be available at and returned to the CGRA Race Office on shore. The protest time limit is 30 minutes after the RC boat docks.
- 15.2. Notices of hearings will be posted no later than 15 minutes after the protest time limit to inform competitors of hearings in which they are parties or named as witnesses. Notices will be placed on the official notice board and on the regatta website, and the protest committee

may attempt to notify competitors by email or text. Failure to post the notices on the regatta website or send the email notification will not be grounds for redress or reopening. This changes rule 62.1(a). Hearings will be held in the CGRA race office building beginning at the time posted. The protest committee may schedule hearings before the end of protest time if the parties are available.

- 15.3. This posting constitutes the notification required in RRS 61.1(b) and 63.2. It is the responsibility of each participant to check the posted schedule of protest hearings.
- 15.4. Breaches of SI 1.3.b, 1.4, 19, 20, 25, 26, and 27 will not be grounds for a protest or redress by a boat. This changes rule 60.1(a). Penalties for these breaches may be less than disqualification if the protest committee so decides.
- 15.5. On the last scheduled day of racing a request for redress, based on a protest committee decision, shall be delivered no later than 30 minutes after the decision was posted. This changes rule 62.2.

16. SCORING

- 16.1. The Low Point Scoring System (Appendix A) shall be used.
- 16.2. When fewer than 6 races have been completed, a boat's series score will be the total of her race scores. When more than 6 races have been completed, a boat's series score will be the total of her race scores excluding her worst score.
- 16.3. The race committee will attempt to complete as many races as conditions allow. A minimum of three completed races are required to constitute a series.
- 16.4. To request correction of an alleged error in posted race or series results, a boat shall complete a 'Scoring Inquiry Form' available at the Race Office and submit the completed form.

17. REPLACEMENT OF CREW

- 17.1. Substitution of competitors will not be allowed unless authorized by the Protest Committee in writing. Requests for substitution shall be made in writing to the protest committee at the first reasonable opportunity, which may be after the race.
- 17.2. Should a boat whose Corinthian entry has been checked and accepted need to change a crew member between the closing date of entries and the start of the regatta, the name of the new crew member with their valid World Sailing sailor ID and group number shall be submitted to the CGRA race office.

18. EQUIPMENT AND MEASUREMENT CHECKS

- 18.1. A boat or equipment may be inspected at any time for compliance with the class rules.
- 18.2. Competitor are responsible for ensuring their equipment is in compliance with the Melges/24 rules.

19. SUPPORT BOATS

- 19.1. Support boats, which include coach and spectator boats, must register at the CGRA race office during the check-in period. During racing, support boats shall monitor the race committee VHF channel and remain more than 50 yards from the course area, except when asked to assist by the race committee. During a race day, support boats shall not communicate with a boat that is racing or intending to race from the preparatory signal of the first race of the day until that boat has completed the last race of the day.
- 19.2. Support boats shall check with the CGRA race office regarding availability and location of berthing in the Cascade Locks Marine Park Marina. It may be necessary for support boats to be kept on their trailers in lieu of moorage berths.
- 19.3. Additional rules for support boats shall be provided at the time of check in with the CGRA race office.

20. TRASH DISPOSAL

- 20.1. Boats shall not put trash in the water. Trash may be placed aboard support and race committee boats.

21. LAUNCHING, BERTHING AND HAUL-OUT RESTRICTIONS

- 21.1. All boats intending to race shall be afloat by 9:00 am on Wednesday, July 19.
- 21.2. Boats shall be kept in the designated areas of the Cascade Locks Marine Park or as otherwise assigned by the CGRA race office. Specific berths may be assigned at check-in.
- 21.3. Boats shall not be hauled out during the regatta without the prior written permission of the race committee; provided that CGRA may implement a procedure approved by the race committee for storage of boats on their trailers in lieu of moorage berths as deemed necessary by CGRA based upon availability of moorage facilities and the number of boats registered.
- 21.4. Boats shall not be kept on a hydro-hoist or other flotation device during the regatta.

22. DIVING EQUIPEMNT AND PLASTIC POOLS

- 22.1. Underwater breathing apparatus, including snorkels, and plastic pools or their equivalent, shall not be used around boats between the preparatory signal for the first race and the end of the regatta.

23. RADIO COMMUNICATION

- 23.1. Except in an emergency, a boat shall neither make radio transmissions while racing nor receive radio communications not available to all boats. This restriction also applies to mobile telephones.
- 23.2. Race information will be broadcast on VHF channel 69.

24. PRIZES

- 24.1. Prizes will be given to the top 3 teams overall and to the top 3 Corinthian teams.

25. RISK, DISCLAIMER OF LIABILITY, PERSONAL CONDUCT

- 25.1. Competitors participate in the regatta at their own risk. See Rule 4 (Decision to Race). The organizing authority will not accept any liability for material damage or personal injury or death sustained in conjunction with or prior to, during, or after the regatta.
- 25.2. Competitors will accept full responsibility for all their actions during any activity related to this event. This includes on-shore activities before, during, and after the regatta.
- 25.3. Competitors are expected conduct themselves in a sportsmanlike manner at all times and to abide by the Marine Park Rules as stated in Addendum "C".

26. INSURANCE

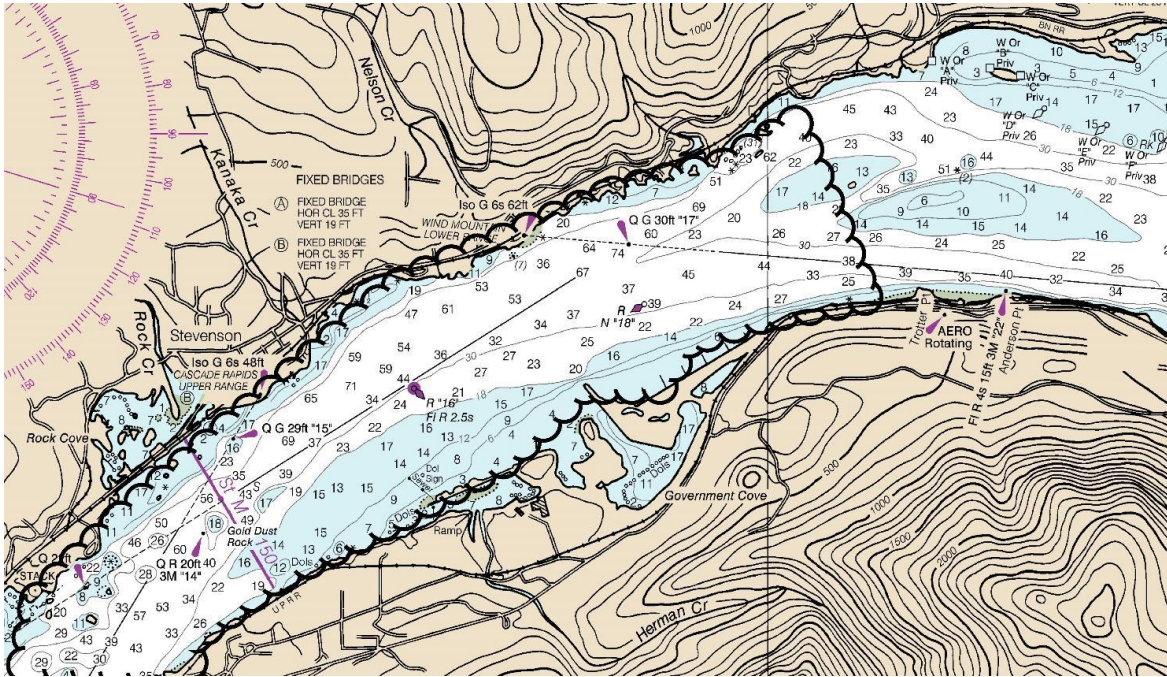
- 26.1. Each participating boat shall be insured with valid third party liability insurance with a minimum cover of \$500,000 per event or the equivalent. Competitors shall be prepared to supply proof of insurance on request.

27. RIGHT TO USE NAME AND LIKENESS

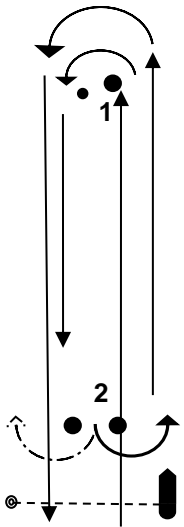
- 27.1. By participating in this event, all competitors automatically grant the organizers and sponsors the right to make, use and show, at any time and at their discretion, any photographs or videos of him or her produced during the period of the event without compensation.



**ADDENDUM A
RACING AREA**



**ADDENDUM B
COURSE DIAGRAMS**

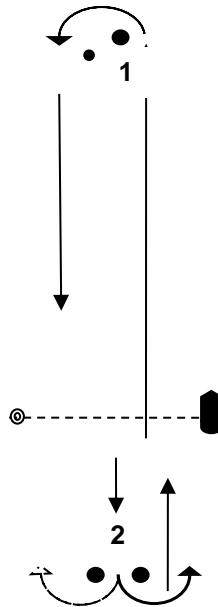


L

Start-1-2-1-Finish

L2

Start-1-2-1-2-1-Finish

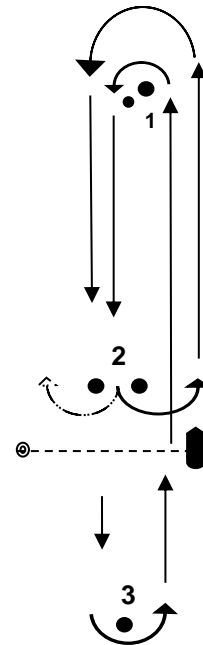


W

Start-1-2-Finish

W2

Start-1-2-1-2-Finish

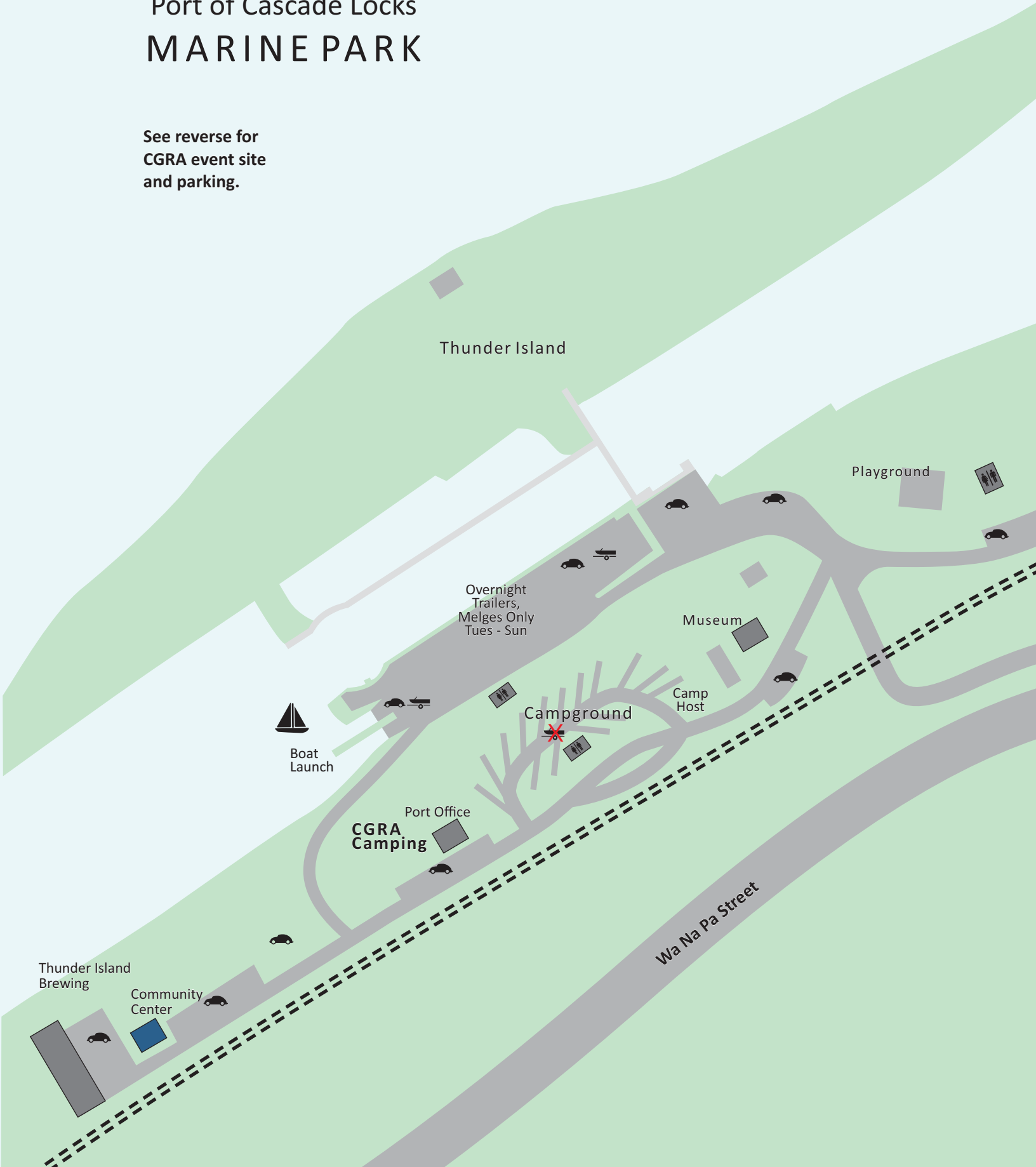


WM

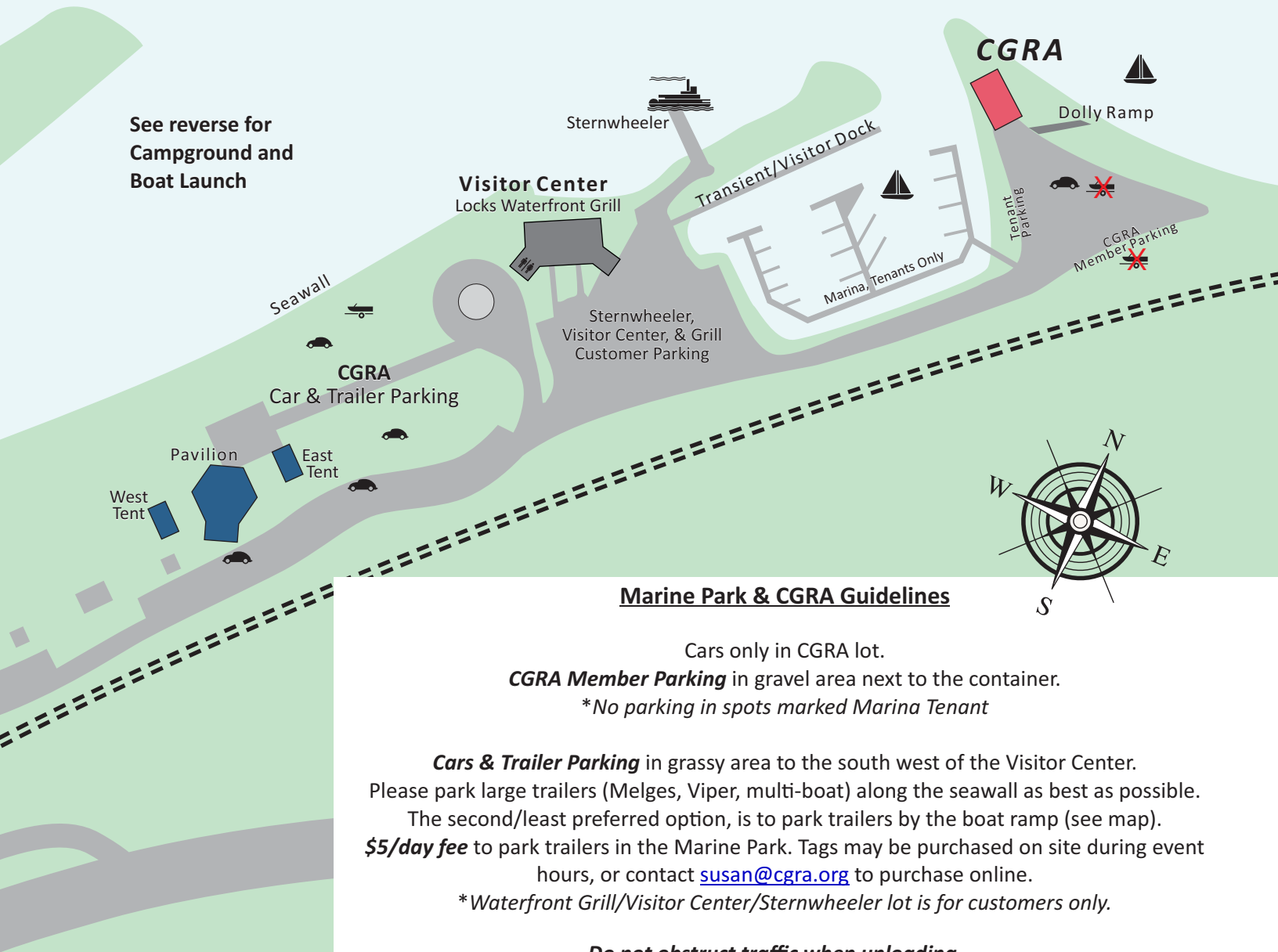
Start-1-2-1-3-Finish

Port of Cascade Locks MARINE PARK

See reverse for
CGRA event site
and parking.



Columbia River



See reverse for
Campground and
Boat Launch

Marine Park & CGRA Guidelines

Cars only in CGRA lot.

CGRA Member Parking in gravel area next to the container.

**No parking in spots marked Marina Tenant*

Cars & Trailer Parking in grassy area to the south west of the Visitor Center.

Please park large trailers (Melges, Viper, multi-boat) along the seawall as best as possible.

The second/least preferred option, is to park trailers by the boat ramp (see map).

\$5/day fee to park trailers in the Marine Park. Tags may be purchased on site during event hours, or contact susan@cgra.org to purchase online.

**Waterfront Grill/Visitor Center/Sternwheeler lot is for customers only.*

Do not obstruct traffic when unloading.

Obey painted roadway lines: park between white lines, no parking in loading zones, fire lanes, handicapped spots (without a permit), and other marked areas.

Parking violations subject to fine or tow at owners expense.

The **Dolly Ramp** is accessed via the CGRA parking area.

The vehicle launch ramp is accessed via the **Boat Launch**.

Reserved campsites are in the main **Campground**.

CGRA tent camping is in the grassy area around the Port Office.

All campers must check in with the Camp Host upon arrival.

CGRA is located within the **Cascade Locks Marine Park** and utilizes a public beach, sharing our location with Port Marina Tenants and the Community of Cascade Locks.

Please be respectful of all who wish to access our beautiful location.

Thank You!