

2017 29er Class European Championship

1

SAILING INSTRUCTIONS

**2017 29er Class European Championship
20 to 27 august 2017 – St Pierre Quiberon
Organizing Authority : Comité Départemental de Voile du Morbihan
In conjunction with the International 29er Class Association - Grade 3 IN**

In Sailing Instruction [DP] means the penalty for breaking a rule can be less than a disqualification, at the discretion of the jury. [SC] means scoring penalty [NP] means no competitor protest.

1. RULES

The regatta will be governed by :

- .1 Rules as defined in the Racing Rules of Sailing (RRS)
- 1.2 RRS Appendix P will apply, modified by SI 14.2
- 1.3 Where there is a conflict with the Notice of Race, the Sailing Instructions shall prevail
- 1.4 If there is a conflict between languages the English text will take precedence.
- 1.5 Additional identification :
While racing each boat shall display colored ribbon corresponding to the fleet to which she has been assigned and attached to mast top.
- 1.6 No national prescriptions will apply.

2. NOTICE TO COMPETITORS

- 2.1 Notices to competitors will be posted on the official board located on a glass facade of Building 5 (see map in appendix).

3. Changes to Sailing Instructions

Any change to the sailing instructions will be posted not less than 2 hours before flag G is displayed except that any change to the schedule of races will be posted by 8 pm on the day before it will take effect.

4. SIGNALS MADE ASHORE

- 4.1 Signals made ashore will be displayed on the white flagpole located on east side of Building 5. When a flag is displayed with a colored ribbon, it only refers to the fleet associated with the colored ribbon.
- 4.2 When flag AP is displayed ashore one minute is replaced with "not less than 60 minutes" in the race signal AP.
- 4.3 Boats shall not leave their allocated berths until the Flag **G** is displayed with one sound signal

5. REGISTRATION

Sunday August 20th from 8.30 am to 13 pm and from 2pm to 19 pm and Monday 21st from 8.30 am to 13 pm

FORMAT OF RACING

.1 Qualifying series

The qualifying series shall last 3 days provided that 5 races have been completed by all fleets. If all fleets have not completed 5 races each, qualifying series shall continue full days until completed.

- .2 For the qualifying series, boats will be assigned to fleets Yellow, Blue, Red, Green, as close as possible for equal size and ability. Initial fleet assignments will be made randomly by the Organizing Authority, and shall be posted by 9 am on the first day of racing.

- .3 In the qualifying series boats will be reassigned to fleets after each day of racing, except if on the first day only one race is completed. If all fleets have completed the same number of races, boats will be reassigned on the basis of their ranks in the series. The series scores for reassignment will be calculated for those races, numbered in order of completion, completed by all fleets. Reassignments will be made as follows :

Rank in series
First

Fleet assignment
Yellow

2017 29er Class European Championship

2

Second	Blue
Third	Red
Fourth	Green
Fifth	Green
Sixth	Red
And so on...	

- .4 Assignments will be based upon the ranking available at 8pm every day regardless of protests or requests for redress not decided yet.
- .5 If all fleets have not completed the same number of races by the end of a day, the fleets with fewer races number will continue racing the following day until all fleets have completed the same number of races. Thereafter all boats shall race in new fleets.
- .6 If at the end of the qualifying series some fleets have completed more races than others, the most recent results from races completed by those fleets shall be withdrawn so that all fleets have the same number of races completed and results.
- .7 For the qualifying series, RRS A4.2 has changed so that results are based upon the number of boats racing in the largest fleet.

.2 FINAL SERIES

Final series shall start the 4th day of race provided that SI 5.1.1 is completed.

- .2.1 Boats shall be assigned to final series fleets Gold, Silver, Bronze and Emerald, on the basis of their ranks in the qualifying series. The 50 boats ranked highest in the qualifying series will be assigned to the Gold fleet. The Silver, Bronze, and Emerald fleets will be of equal size; boats with the next best qualifying series ranks will race in the Silver fleet, etc. If the total number of boats to be assigned to these fleets is not evenly divisible, the first extra position will be assigned to the Silver fleet.
- .2.2 Any recalculation of qualifying series ranking after boats have been assigned to final series fleets will not affect the assignments except that a redress decision may promote a boat to a higher fleet.
- .2.3 Except results from races notified in SI 5.1.7 the results of a boat will be constituted with the results from its races from the final series along with its points obtained in the qualifying series, which won't be set aside. See SI 17
- .2.4 Each fleet from the final series will be ranked separately. All fleets won't have to complete the same number of races in the final series.
- .2.5 The top three competitors of each day in the Gold fleet shall wear leader jerseys and display sail dots as directed by the organizing authority. These items will be supplied by the organizing authority.

5.3 SCHEDULE OF RACES

Monday, August 21 st	Practice race (afternoon)
Tuesday, August 22 nd	Qualifying series – 3 races
Wednesday, August 23 rd	Qualifying series – 4 races
Thursday, August 24 th	Qualifying series – 3 races
Friday, August 25 th	Final series – 3 races
Saturday, August 26 th	Final series – 4 races
Sunday, August 27 th	Final series – 3 races

One extra race per day may be sailed, provided that the event becomes no more than one race ahead of schedule with respect of rule SI 3.

- 5.4 The scheduled time of the warning signal for the first race each day is 11 h
- 5.5 To alert boats that a race or sequence of races will begin soon, an orange flag will be displayed with one sound for at least 5 minutes before a warning signal is displayed.
- 5.6 On the last day of the regatta no warning signal will be made after 15h.

2017 29er Class European Championship

3

6. CLASS FLAGS

6.1.1 Class flags will be the class insignia on a coloured flag are as follows :

Qualifying fleets	Final fleets	Flag colour
Yellow	Gold	Yellow
Blue	Silver	Blue
Red	Bronze	Red
Green	Emerald	Green

.2 IDENTIFICATION

Fleets shall be identified by a colored ribbon associated with the corresponding fleet.

7. RACING AREAS

Attachment A shows the location of racing areas.

7.1 Fleets assignments in course areas shall be posted before the G flag is displayed (SI 4.3)

Fleets Yellow/ Gold and Blue/ Silver shall be assigned to race on Charly

Fleets Red/Bronze and Green/Emerald shall be assigned to race on Delta.

8. COURSE

8.1 The diagram in Attachment B shows the course, including the course signals, the order in which marks are to be passed, and the side on which each mark is to be left, with the length of the course.

8.2 No later than the warning signal, the race committee signal boat will display the course to sail and if necessary, the approximate compass bearing of the first leg. Signals indicating the race to sail are: Flag 2 for Race course L2 and Flag 3 for race course L3.

9. MARKS

Marks 1, 2S and 2P :

Charly race area : Yellow

Delta race area : Orange

New mark after changing a leg will be Red on both courses Charly and Delta race area.

Finishing marks shall be Green marks on both courses area.

10. ZONES THAT ARE CONSIDERED AS OBSTRUCTION

Zones considered as obstructions are detailed on Appendix « Racing Area ».

11. START

11.1 The starting line will be between masts displaying orange flags on committee boats.

11.2 Waiting boats : Boats whose warning signal has not been made shall avoid the starting area during the starting sequence for other races. [DP]

11.3 A boat starting later than 4 minutes after its starting signal shall be scored Did Not Start (DNS). This changes rule A4 and A5.

12. CHANGE OF THE NEXT LEG OF THE COURSE

12.1 To change the next leg of the course, the race committee will lay a new mark and remove the original mark as soon as practicable. When in a subsequent change a new mark is replaced, it shall be replaced by an original mark.

12.2 Except at a gate, boats shall sail between the race committee vessel that signaling the change of the next leg and the near by mark, leaving mark to port and race committee vessel to starboard (this changes rule 28.)

13. THE FINISH

2017 29er Class European Championship

4

The finishing line will be **between the committee boat displaying Orange flags and the finishing mark.**

14. PENALTY SYSTEM

- 14.1 Rule 44.1 is changed so that the Two Turns Penalty is replaced by the One Turn Penalty.
- 14.2 Appendix P will apply as followed :
- 14.2.1 Rule P2.1 is changed so that the two-turn penalty is replaced by a one-turn penalty.
- 14.2.2 Rule P2.3 shall not apply and Rule P2.2 applies to all penalties after the first penalty.
- 14.3 Breaking a rule (except Rules from Part 2, RRS 28 and 31) could penalties by a [DP] at the discretion of the jury.

15. TARGET TIMES & LIMIT TIMES

- 15.1 Time limits and target times are as follows :

Time limit	Time limit to finish after the 1st	Target time
45 minutes	10 minutes	30 minutes

Failure to meet the target time should not be grounds for a redress. It change rule 62.1(a).

- 15.2 Boats failing to finish within 10 minutes after the first boat sails the course and finishes, will be scored Did Not Finish without a hearing. This changes RRS 35, A4, A5--
- 15.3 If no boat has finished within the Time limit the race will be abandoned.

16. PROTESTS and REQUESTS FOR REDRESS

- 16.1 Protest forms are available at the jury secretary located, in Formation building. Protests and requests for redress or reopening shall be delivered there within the appropriate time limit.
- 16.2 For each fleet the protest time limit is 60 minutes after the last boat has finished the last race of the day, or the race committee signals no more racing to day, whichever is later.
- 16.3 Notices will be posted no later than 30 minutes after the protest time limit to inform competitors of hearings in which they are parties or named as witnesses. Hearings will be held in the protest room, located in room 4 of Formation building.
- 16.4 Notices of protests by the race committee, technical committee or jury will be posted to inform boats under RRS 61.1(b).
- 16.5 A list of boats that have been penalized regarding Appendix P for breaking rule 42 will be posted.
- 16.6 Breaches of the following instructions shall not be grounds for a protest by a boat. This change RRS 60.1(a).
 - Start : boats waiting for their start
 - Safety rule (except rule for using boat outside)
 - Advertising
 - Coach's boats
 - Radio communication
- 16.7 On the last scheduled day for the qualification and final series a request for reopening a hearing or redress based on a protest committee decision shall be delivered.
 - (a) Within the protest time limit if the requesting party was informed of the decision on the previous day.
 - (b) No later than 30 minutes after the posting of the decision. This change RRS 62.2 and RRS 66.
- 16.8 Decisions of the jury will be final as provided in RRS 70.5.

.9 ARBITRATION

Appendix T of the RRS shall apply

17. SCORING

- 17.1. Five races are required to be completed by each fleet to constitute a qualifying series. If 5 races are not completed as scheduled, the qualifying series will be extended to complete them.

2017 29er Class European Championship

5

- 17.2. One race is required to be completed to constitute a final series.
- 17.3. If at the end of the qualifying series some boats have more race scores than others, scores for the most recent races will be excluded so that all boats have the same number of race scores.
- 17.4. For the qualifying series, RRS A4.2 is changed so that the scores are based on the number of boats assigned to the largest fleet.
- 17.5. Except for race scores excluded under SI 17.3, a boat's regatta score will be the total of her race scores from her final-series races plus points equal to her qualifying-series rank, which shall not be discarded.
- 17.6. Each final series fleet will be scored separately. Different final series fleets need not have completed the same number of final races. The boats in the Gold fleet will be ranked highest, etc.
- 17.7. Series scores (apply separately to qualifying and final series) :
 - (a) When fewer than 5 races have been completed, a boat's series score will be the total of her race scores.
 - (b) When from 5 to 8 races have been completed, a boat's series score will be the total of her race scores excluding her worst score.
 - (c) When 9 or more races have been completed, a boat's series score will be the total of her race scores excluding her two worst scores.

18 SAFETY REGULATIONS

- .1 **Check-out and check-in** : The requirements are specified for the safety of competitors. Prior to leaving offshore, each boat shall scan their RFID wristband at the provided kiosk, located in front of H1 building 5. Sailors shall scan back the wristband when returning ashore within the protest time limit. Penalty for breach of this SI is 3 points added to the first race of the day for a failing check-out, 3 points added on the last race for a failed check-in, 3 points added on each race of the day for failing check-out and check-in without hearing. This change RRS 63.1
- .2 A boat that retires from a race shall notify the race committee as soon as possible.
- .3 Under all circumstances coaches and other support boats are expected to assist any boat in distress.

19. REPLACEMENT OF CREW OR EQUIPMENT [DP]

- 19.1 Substitution of competitors will not be allowed without prior written approval of the race committee or jury.
- 19.2 Substitution of damaged or lost equipment will not be allowed unless approved by the race committee or technical committee. Requests for substitution shall be made at the first reasonable opportunity.

20. EQUIPMENT & MEASUREMENT CHECKS [DP]

- 20.1 A boat or equipment may be inspected at any time for compliance with the class rules and sailing instructions. Offshore, a boat can be instructed by a member of the technical committee to proceed immediately to a designated area for inspection.
- 20.2 Only one set of sails and one forestay may be used during the regatta. They shall be presented and stamped/tagged during the measurement procedure.

21. ADVERTISING [DP]

- Boats shall display the advertising supplied by the organizing authority on both side of the forward 25% of the hull.
- Boats shall display Zhik's bow stickers
- Boats shall display Sailcenter boom stickers.

22. OFFICIAL BOATS

- Official boats will be marked with a white flag for area Charly and purple flag for area Delta,

23. SUPPORT BOATS [DP]

- 23.1 Coach boats and other support personnel shall stay outside areas where boats are racing from the time of the preparatory signal until all boats have finished or retired or the race committee signals a postponement, general recall or abandonment.
- 23.2 Support boats shall be marked with a flag with 3 first national letters. Minimum height for letters is 210mm. Minimum flag height above the water is 1 metre.
- 23.4 In poor weather conditions, all support boats must be moored by ponton T, located at Port Haliguen.

2017 29er Class European Championship

6

24. RADIO COMMUNICATION [DP]

Except in case of emergency, a boat shall neither make radio transmissions while racing nor receive radio communications that are not available for all boats. This restriction includes mobile phones.

25. PRIZES

.1 Prizes will be awarded to the first three boats in the Gold fleet, and other fleets.

25.2 Class perpetual trophies will be awarded to the overall winning team

26. DECISION TO COMPETE

By participating in the regatta, sailors are responsible of their decision to race. In consequence, the Organizing Authority is not responsible in case of damage (equipment/ body).

27. RIGHTS TO USE NAME AND LIKENESS

By participating in this event, competitors automatically grant to the organizing authority and the event sponsors the right, in perpetuity, to make, use, and show, at their discretion, any photography, audio and video recording, and other reproductions of them made at the venue or on the water from the time of their arrival at the venue, until their final departure, without compensation.

31. INSURANCE

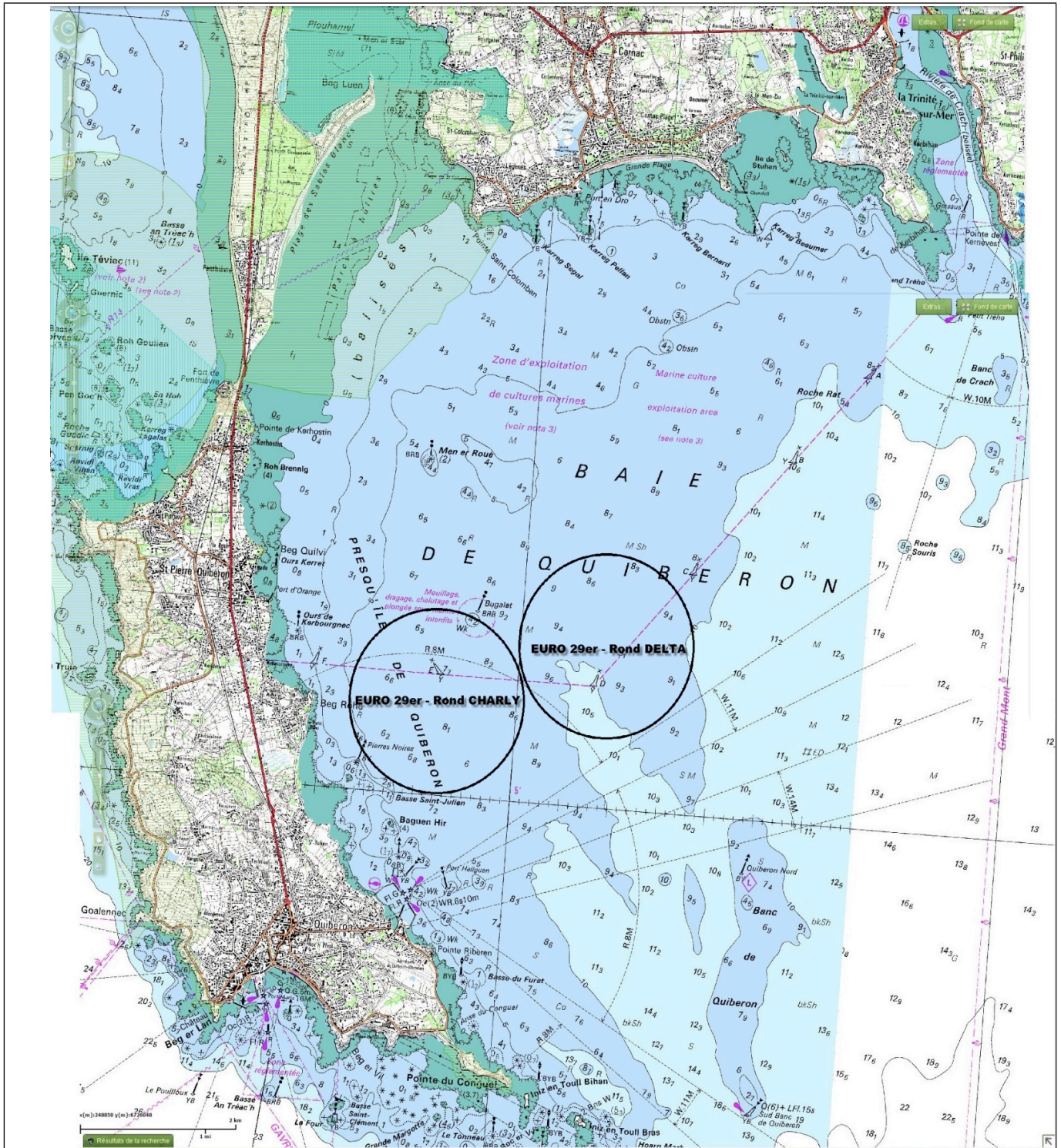
Each participating boat shall be insured with valid third-party liability insurance with a minimum cover of 1.500.000€ per event or the équivalent.

Race official appointed :

fonction	nom
RACE COMMITTEE OFFICER	DESPIERRES PAUL EDOUARD
RACE COMMITTEE OFFICER	BITARD NICOLE
CHAIRMAN JURY	KRESSE THOMAS, NOR IJ
MEASURER	MARECHAL OLIVIER

Racing area

2017 29er Class European Championship



ANNEXE PARCOURS

2017 29er Class
European Championship

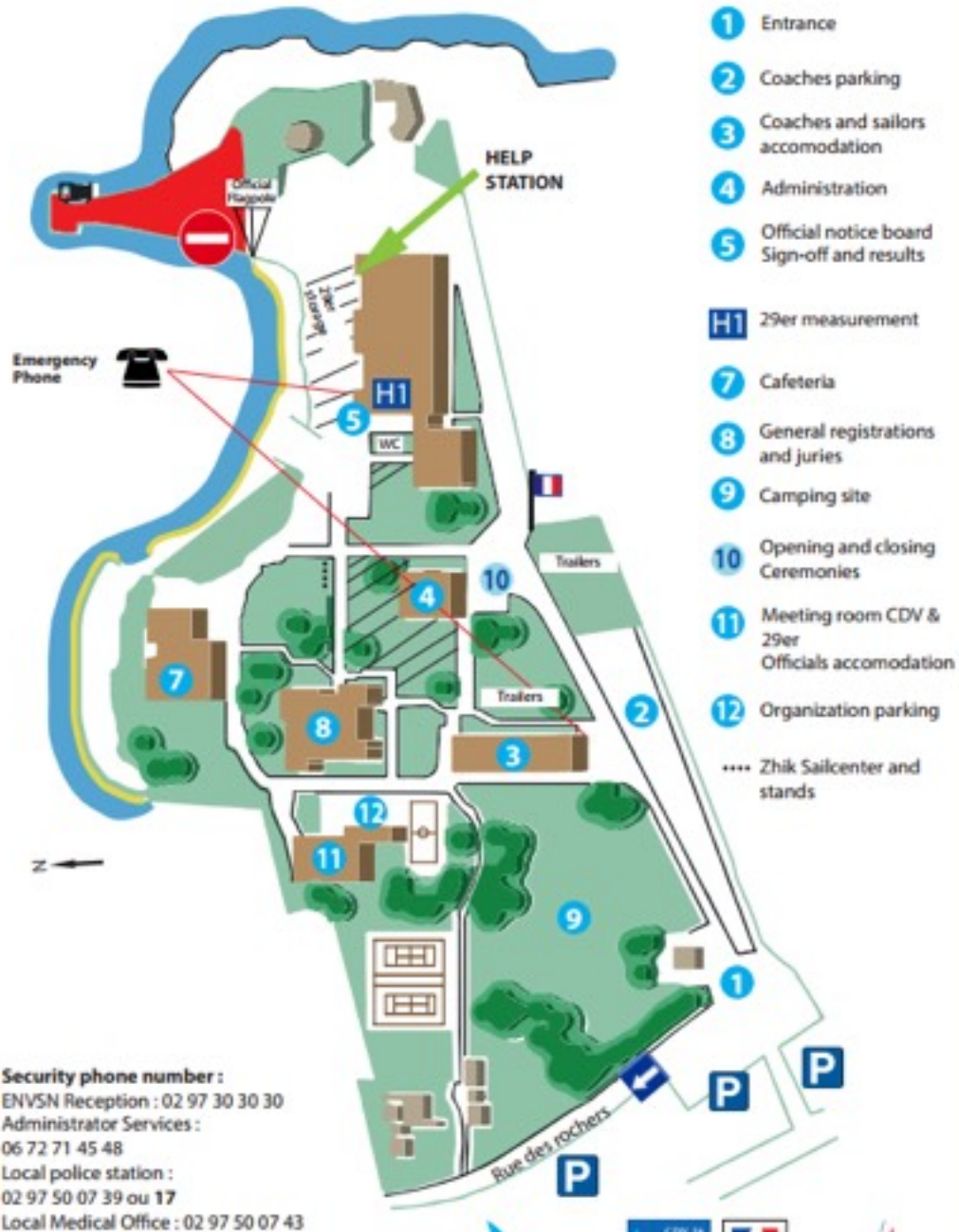
8

Site map ENVSN

2017 29er Class European Championship

9

European 29er Championship map



- 1 Entrance
- 2 Coaches parking
- 3 Coaches and sailors accomodation
- 4 Administration
- 5 Official notice board
Sign-off and results
- H1 29er measurement
- 7 Cafeteria
- 8 General registrations and juries
- 9 Camping site
- 10 Opening and closing Ceremonies
- 11 Meeting room CDV & 29er Officials accomodation
- 12 Organization parking
- Zhik Sailcenter and stands

Security phone number :
 ENVSN Reception : 02 97 30 30 30
 Administrator Services :
 06 72 71 45 48
 Local police station :
 02 97 50 07 39 ou 17
 Local Medical Office : 02 97 50 07 43

Fire Station : 112
 Ambulance : 15

