



2017 Gorge Skiff Regatta

49er & 49erFX US National Championship International 14 US National Championship

Cascade Locks, Oregon

July 14-16, 2017

Columbia Gorge Racing Association

NOTICE OF RACE

1. RULES

- 1.1. The regatta will be governed by the rules as defined in *The Racing Rules of Sailing*.
- 1.2. The following prescriptions of *US Sailing* will not apply: Rule 63.2 and Rule 63.4.
- 1.3. The rules of any participating class association, the Notice of Race, and the Sailing Instructions will apply.
- 1.4. Racing Rule 40 is changed as follows: Replace the entire Rule with, "Competitors shall wear personal flotation devices, except briefly while changing or adjusting clothing or personal equipment. This rule applies at all times while afloat. Wet suits and dry suits are not personal flotation devices. Flag Y need not be displayed."

2. ADVERTISING

- 2.1. Competitor advertising shall be restricted to World Sailing [Regulation 20](#), Advertising Code.
- 2.2. Boats may be required to display advertising and/or bow numbers chosen and supplied by the organizing authority.

3. ELIGIBILITY & ENTRY

- 3.1. This regatta is open to eligible competitors of the 29er, 49er, 49erFX, I-14 and Tasar classes.
- 3.2. Competitors may enter by completing the online registration form and fee payment system found on the Columbia Gorge Racing Association website www.cgra.org.
- 3.3. All competitors, or their parent or guardian if under age 18, will be required to agree to a waiver of liability as a condition of eligibility. This waiver may be completed either during online registration or at event check-in.
- 3.4. All competitors under the age of 18 shall be accompanied, for the duration of the regatta, by a responsible adult who shall be named in the Parent/Guardian Consent Form.

4. FEES

- 4.1. The entry fee is \$145 for 49er, 49erFX and I-14, \$120 for 29er, and \$110 for Tasar entries completed with payment on or before June 14, 2017.
- 4.2. The late entry fee is \$175 for 49er, 49erFX and I-14, \$145 for 29er, and \$130 for Tasar entries completed or paid after June 14, 2017.
- 4.3. CGRA Members (Intermediate or Pro) are eligible for a discount of \$5.00.
- 4.4. The entry fee includes complimentary boat storage for the duration of the event, post-racing refreshments, and admission for skipper and crew to the regatta dinner.
- 4.5. Additional regatta dinner tickets may be purchased at registration for \$25 each.

5. SCHEDULE

Friday, July 14	8:30-10:30 am	Check-in at CGRA Race Office
	10:30 am	Competitors Meeting
	Noon	First Race Warning
Saturday, July 15	11:00 am	First Race Warning
	6 pm	Regatta Dinner
Sunday, July 16	11:00 am	First Race Warning
	3 pm	No warning signal will be made after
	ASAP after racing	Awards Presentation

6. INSPECTION & MEASUREMENT

- 6.1. All boats shall comply with current class rules and specifications.
- 6.2. Spot checks may be performed on any boat by the technical committee at any time during the event.

7. SAILING INSTRUCTIONS

- 7.1. The Sailing Instructions will be available at event check-in on Friday, July 14.

8. VENUE

- 8.1. The Columbia River adjacent to Cascade Locks Marine Park (see Attachment A)

9. COURSES

- 9.1. The courses will be around buoys set by the race committee as described in the Sailing Instructions.

10. PENALTY SYSTEM

- 10.1. The first two sentences of Rule 44.1 are changed to: ‘A boat may take a One-Turn Penalty when she may have broken one or more rules of Part 2 or Rule 31 in an incident while *racing*. However, when she may have broken one or more rules of Part 2 while in the *zone* around a *mark* other than a starting *mark*, her penalty shall be a Two-Turns Penalty.’

11. SCORING

- 11.1. The Low Point Scoring System (Appendix A) shall be used.
- 11.2. The minimum number of races required to constitute a regatta is 3.
- 11.3. When fewer than 6 races have been completed, a boat’s series score will be the total of her race scores. When 6-11 races have been completed, a boat’s series score will be the total of her race scores excluding her worst score. When 12 or more races have been completed, a boat’s series score will be the total of her race scores excluding her two worst scores.

12. SUPPORT BOATS

- 12.1. All support boats must register at the CGRA Race Office during the check-in period to receive identifying flags and berthing assignments (\$20.00/boat refundable deposit required).
- 12.2. Support boats shall be required to display their identifying flags at all times during the event and comply with any instructions from race officials.
- 12.3. During racing, support boats shall monitor the race committee VHF channel and remain more than 50 yards from the course area, except when asked to assist by the race committee.

13. BERTHING

- 13.1. Boats (competing and support) shall be kept in the designated areas of the beach and parking lot at the east end of the Cascade Locks Marine Park or at other locations specifically designated by CGRA officials at check-in.

13.2. Competitors wishing to arrange storage outside of the period of the event should contact the [CGRA Office](#).

14. PRIZES

14.1. Prizes will be awarded to skipper and crew of the top teams based upon the number of registered competitors.

15. SAFETY

15.1. Boats shall not impede the passage of a commercial vessel and shall comply with the [U.S. Inland Navigation Rules Act of 1980](#). Boats that fail to comply promptly with signals from a committee boat to alter course, or that receive a 5-blast warning (5 short sounds) from a commercial vessel, will be subject to protest and possible disqualification.

16. RISK, DISCLAIMER OF LIABILITY, & PERSONAL CONDUCT

16.1. Competitors participate in the regatta at their own risk. See RRS 4 (Decision to Race). The organizing authority will not accept any liability for material damage or personal injury or death sustained in conjunction with or prior to, during, or after the regatta.

16.2. Competitors will accept full responsibility for all their actions during any activity related to this event. This includes on-shore activities before, during, and after the regatta.

16.3. Competitors are expected to abide by the Marine Park Rules as stated in Attachment C.

17. RIGHT TO USE NAME & LIKENESS

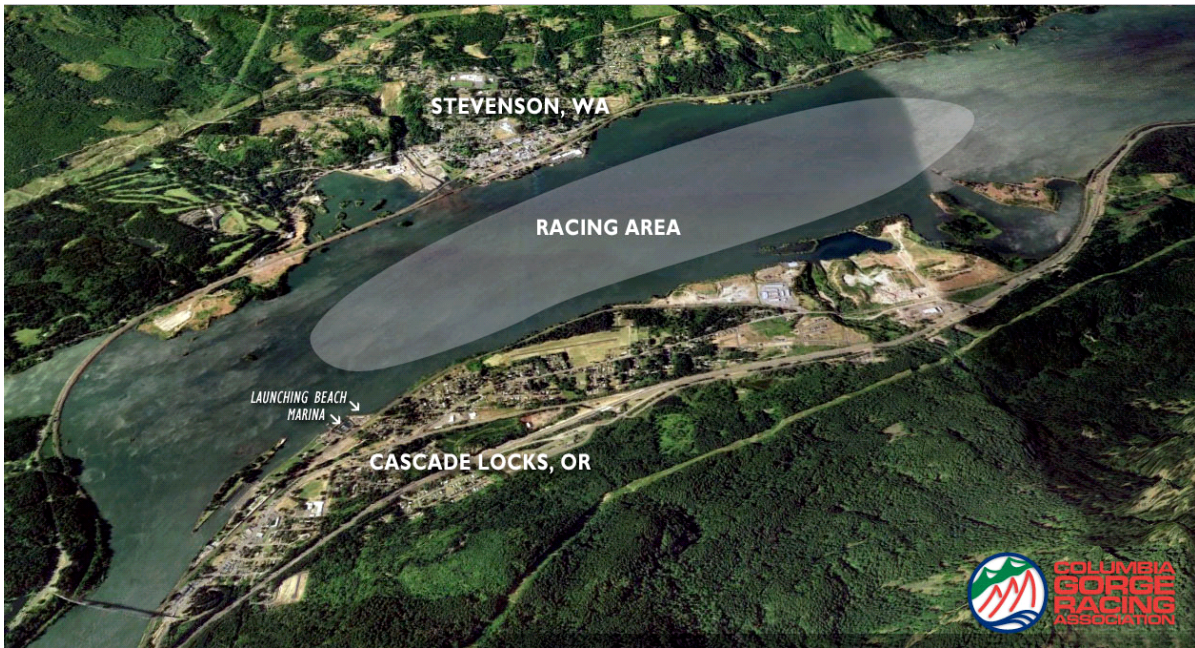
17.1. By participating in this event, all competitors automatically grant the organizers and sponsors the right to make, use and show, at any time and at their discretion, any photographs or videos of him or her produced during the period of the event without compensation.

18. FURTHER INFORMATION

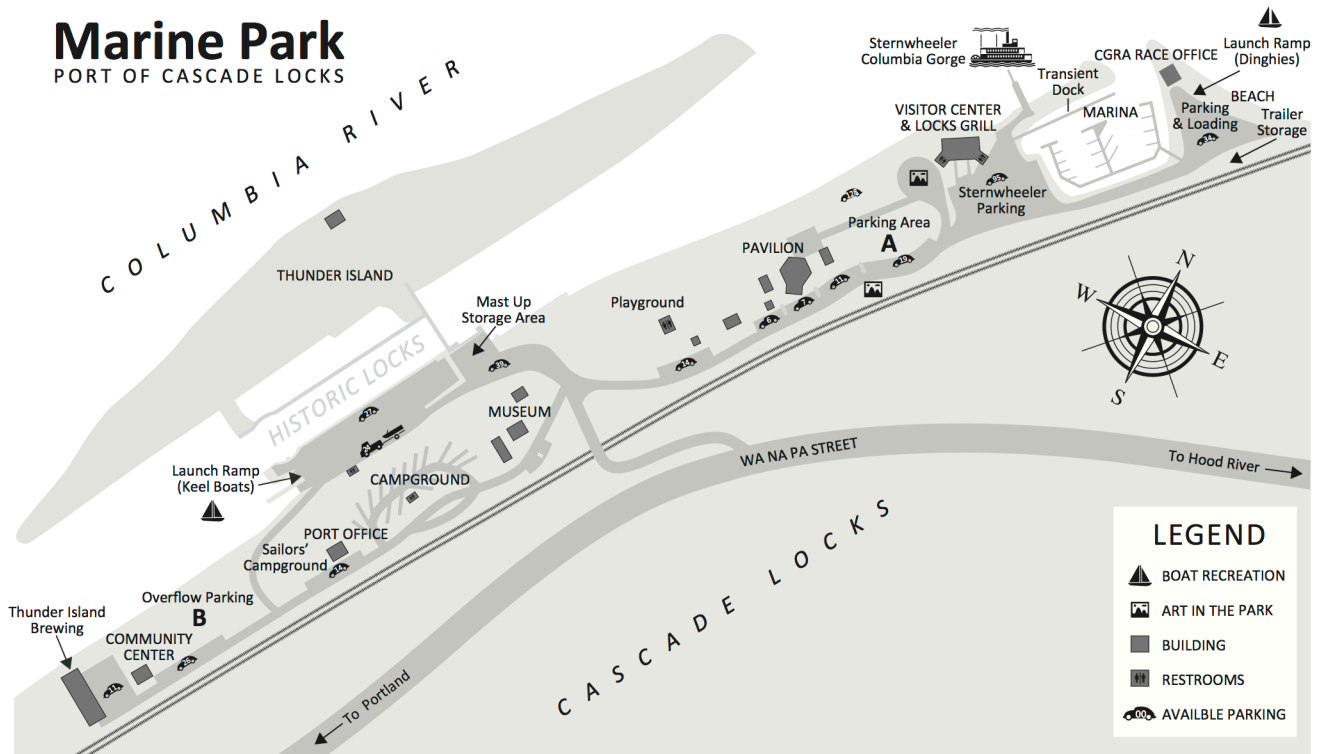
18.1. Additional useful information regarding accommodations, travel, and area recreation is available online at www.cgra.org.

18.2. For more information, please contact the [CGRA Regatta Chairman](#) at dierkp@cgra.org.

Attachment A: Racing Area



Attachment B: Marine Park Map



Attachment C: Marine Park Rules & Guidelines

Welcome to Cascade Locks Marine Park. This is a public facility that CGRA shares with other visitors, so please be courteous and respectful to other park and beach users. Also, please obey all posted signs and regulations. By following these guidelines you will help to ensure that we may continue to hold regattas at the Marine Park.

PARKING

- Park only in designated (striped) parking spots in the beach parking lot.
- Do not park in spaces marked for marina patrons.
- Do not park in the area marked for boat trailers.
- Do not park along the south side of the road leading to the beach.
- Do not park in the parking lot adjacent to the Visitor Center. This is exclusively for use by patrons of the Sternwheeler Cruises.
- Do not block aisles or access ways with cars, boats, trailers or gear.
- RVs and campers are not allowed to park in the beach parking without a special permit.
- Overflow parking will be available in area A (see map) if beach parking lot is full. Please see the race management office or notice board.

TRAILER PARKING

- Trailers must be parked in the designated area only (Area A on map).
- Trailers may not be left in automobile parking spaces.
- Overflow trailer parking will be available if trailer area is full. Please see the race management office or notice board.
- Boats may be left in the moorage pen only with the permission of the CGRA facilities manager. See the regatta office for more information.
- Trailer fee of \$5/day can be paid either at the Port office (see map) or upon event check in at CGRA office. Trailer tag must be affixed to the trailer.

CAMPING

- On most weekends camping is available at the Marine Park. Check in with camp host to get a camping spot. Campground pricing is as follows:
 - Sites 1-12: \$35/night (hookups)
 - Sites 13-16: \$25/night (2 tents per site)
- Reservations are accepted for campground only.
- Overflow camping area is for sailing events only (no reservations). Fee: \$15/tent.
- Camping must be in designated areas only. No camping in parking lots or beach area.
- No campfires allowed.
- Showers/restrooms are open to public. Restrooms are located in three areas:
 - Boat Launch area
 - Marine Park (middle)
 - Campground (with showers)
- RV dump station is located in the campground.

MISCELLANEOUS

- Please keep personal gear and boat equipment together, out of the way and safe at all times. CGRA and the Port of Cascade Locks are not responsible for lost or stolen items.
- Bins are available for secure, overnight storage in the CGRA container.
- Pick up all trash.
- Park hours: No person shall remain in the Port Marine Park between the hours of 10 pm- and ½ hour before sunrise unless the person is a camper in an authorized Port campsite. Unauthorized vehicles, trailers, or boats left unattended are left at their own risk and may be subject to towing and/or a fine.