



# The J. Kevin Box Perpetual Conundrum Regatta

Galveston Bay Texas

April 22, 2017

Galveston Bay Cruising Association

1500 Marina Bay Dr • Building #113B • Clear Lake Shores, TX

## Sailing Instructions (Appendix B updated)

### 1. RULES

- 1.1. The Race will be governed by The Racing Rules of Sailing (RRS) 2017-2020 including US SAILING Prescriptions, PHRF of Galveston Bay, the Notice of Race and these Sailing Instructions. Autopilot and/or wind-powered self-steering gear are allowed while racing. This modifies RRS 52.
- 1.2. The following RRS are modified herein:
  - Sailing Instruction 5.2 modifies RRS 62.1(a)
  - Sailing Instruction 8.2 & 8.3 modifies RRS 26
  - Sailing Instruction 11 modifies RRS 61
  - Sailing Instruction 13 modifies RRS 35
- 1.3. Crew size is limited to single-hand and double-hand classes.

### 2. NOTICES TO COMPETITORS

Notices to Competitors will be posted at:

[http://www.regattanetwork.com/clubmgmt/applet\\_notice\\_board.php?regatta\\_id=14437](http://www.regattanetwork.com/clubmgmt/applet_notice_board.php?regatta_id=14437)

### 3. CHANGES TO THE SAILING INSTRUCTIONS

Any change to the sailing instructions or notice of race will be posted before 0800 on the day it will take effect.

### 4. STARTING TIME

- 4.1. The starting time for each boat is listed in Appendix B.
- 4.2. All times will be based on local Coordinated Universal Time (UTC). UTC time may be verified by calling **303.499.7111**. Skippers are urged to verify that their timekeeping devices (watch, GPS, mobile phone, hourglass, etc.) display accurate UTC.

### 5. RADIO COMMUNICATION

- 5.1. Radio communication will be conducted on VHF channel 69.
- 5.2. In addition to signaling Individual Recalls in accordance with RRS 29.1, as a courtesy, the Race Committee will attempt to broadcast the names or sail numbers of boats that have started early. Failure to make such a broadcast, failure of a boat to receive that broadcast, a boat's order in that broadcast, or the promptness of that broadcast will not be grounds for redress. This modifies RRS 62.1(a).
- 5.3. If a weather-related postponement is required it will be announced at 1000 on VHF Channel 69. Postponements will be in increments of 1 hour. Starting time will be adjusted accordingly. So for example if we postpone hour, you will add one hour to your start time. The finish cut off time will also be delayed by the same amount of time.

### 6. CHECK-IN PROCEDURE

All yachts intending to race shall check in with the Race Committee on VHF Channel 69 prior to their start.

### 7. START LINE / GATE / FINISH LINE

- 7.1. The Start Line / Gate / Finish Line will be approximately 0.6nm south of Clear Lake channel marker 1, between an Orange Flag displayed from the Signal Boat and a nearby Orange Mark. The Start/Finish line will be used as a Gate during the race. The line will be oriented on an angle that is approximately parallel to the alignment of the 3 fixed marks.

## 8. THE START

- 8.1. The starting line will be between the staff displaying an orange flag on the Signal Boat on the starboard end and a nearby orange Mark at the port end of the line.
- 8.2. This is a reverse start (pursuit) race, with the start time for each boat based on its PHRF rating following the 1100 hours. See the accompanying Appendix B for assigned boat start times. This modifies RRS 26
- 8.3. The Race Committee will give no additional starting signals, except to monitor and call individual boats OCS as soon as practical after their assigned start time with sound and the individual recall flag. Any boat(s) signaled as OCS at their respective starting *time* shall thereafter sail from the course side across the starting line or one of its extensions to the pre-start side before *starting*. Failure to receive the OCS signal shall not be grounds for redress. This modifies RRS 26.
- 8.4. The signal boat *may* broadcast occasional time checks on VHF 69 until all boats have started.

## 9. THE COURSE

### 9.1. After starting:

- Sail to any of the three Marks listed below as E, H and M52. Round Mark to Port.
- Sail back to and through (i.e. between) the Gate formed by the Signal Boat and nearby Mark from the direction of the last mark.
- Sail to either of the two remaining Marks not yet rounded. Round Mark to Port.
- Sail back to and through the Gate formed by the Signal Boat and nearby Mark from the direction of the last mark.
- Sail to the one remaining Mark not yet rounded. Round Mark to Port.
- Sail back to finish.

### 9.2. When sailing through the Gate, boats shall round either the **SIGNAL BOAT TO PORT** or the **MARK TO STARBOARD** before proceeding to the next mark.

### 9.3. Boats shall not enter the Houston Ship Channel. The Houston Ship Channel is designated as an Obstruction. The Official Course Length is 20.2 nautical miles. A chart showing the relative position of the marks will be available in Appendix A. This chart is schematic in nature and is not to be used for navigation.

### 9.4. Approximate location of Start/Finish Gate and Marks:

Mark	Approximate Coordinate	Description
Start/Finish Gate	N 29° 32.567' W 094° 59.545'	<i>RC Signal boat and a nearby orange Tetrahedron</i>
E	N 29° 35.787' W 094° 56.935'	<i>The Low Range Marker (Upper Range "A") in Galveston Bay. The mark is an orange and white structure near Houston Ship Channel Marker #73, 0.23 nm NNW of the old low range.</i>
H	N 29° 33.255' W 094° 56.542'	<i>A platform located in Galveston bay, approximately 1.3 nm WSW of the Houston Ship Channel marker #65.</i>
M52	N 29° 31.808' W 094° 55.597'	<i>A piling with "Gal Shellfish Mark 52" signage. located approximately 2.2nm NNW of Eagle Point and 1.2nm NW by W of the former J mark.</i>

### 9.5. In the event a mark is found to be missing and has not been replaced with a missing mark flag or with an inflatable mark, boats are to round the coordinates of the mark.

## 10. THE FINISH

The Finish Line will be between a staff displaying an orange flag on the Signal Boat on the port end and an orange mark on the starboard end.

## 11. PROTESTS AND ARBITRATION

11.1. RRS Appendix T ARBITRATION will be in effect.

11.2. Protests shall be communicated to the Race Committee before leaving the race area and must be filed in writing within 2 hours of the last boat finishing. This modifies RRS 61. Protests shall be filed at the GBCA clubhouse.

## 12. SAFETY and WITHDRAWING PROCEDURES

12.1. Attention is called to RRS 4: Decision to Race, "The responsibility for a boat's decision to participate in a race or to continue racing is hers alone."

12.2. The Race Committee places high priority on accounting for every yacht participating in a race. It is imperative that any yacht withdrawing from a race makes its best and most persistent efforts to notify other parties of such withdrawal at the earliest opportunity. Withdrawing yachts should make every effort to contact the Race Committee and/or other nearby yachts to communicate the withdrawal via VHF channel 69. If radio communication is unavailable, call or text message the Race Committee phone number: **281.433.4645** and leave a message. Proper reporting of a withdrawal should include yacht name, sail number and skipper's name.

12.3. Code flag "Y" **MAY BE** displayed from the RC Signal boat in accordance with the Racing Rules of Sailing 27.1.

## 13. TIME LIMIT

Racing will be concluded as of 1800 hours Saturday, April 22<sup>nd</sup>. Yachts not finished after this time will be scored as Did Not Finish (DNF). This modifies RRS 35.

## 14. SCORING

The Race Committee will score the race with reverse start (pursuit) style race using the performance handicapping racing formula, time on distance, for each yacht, as determined by the Race Committee.

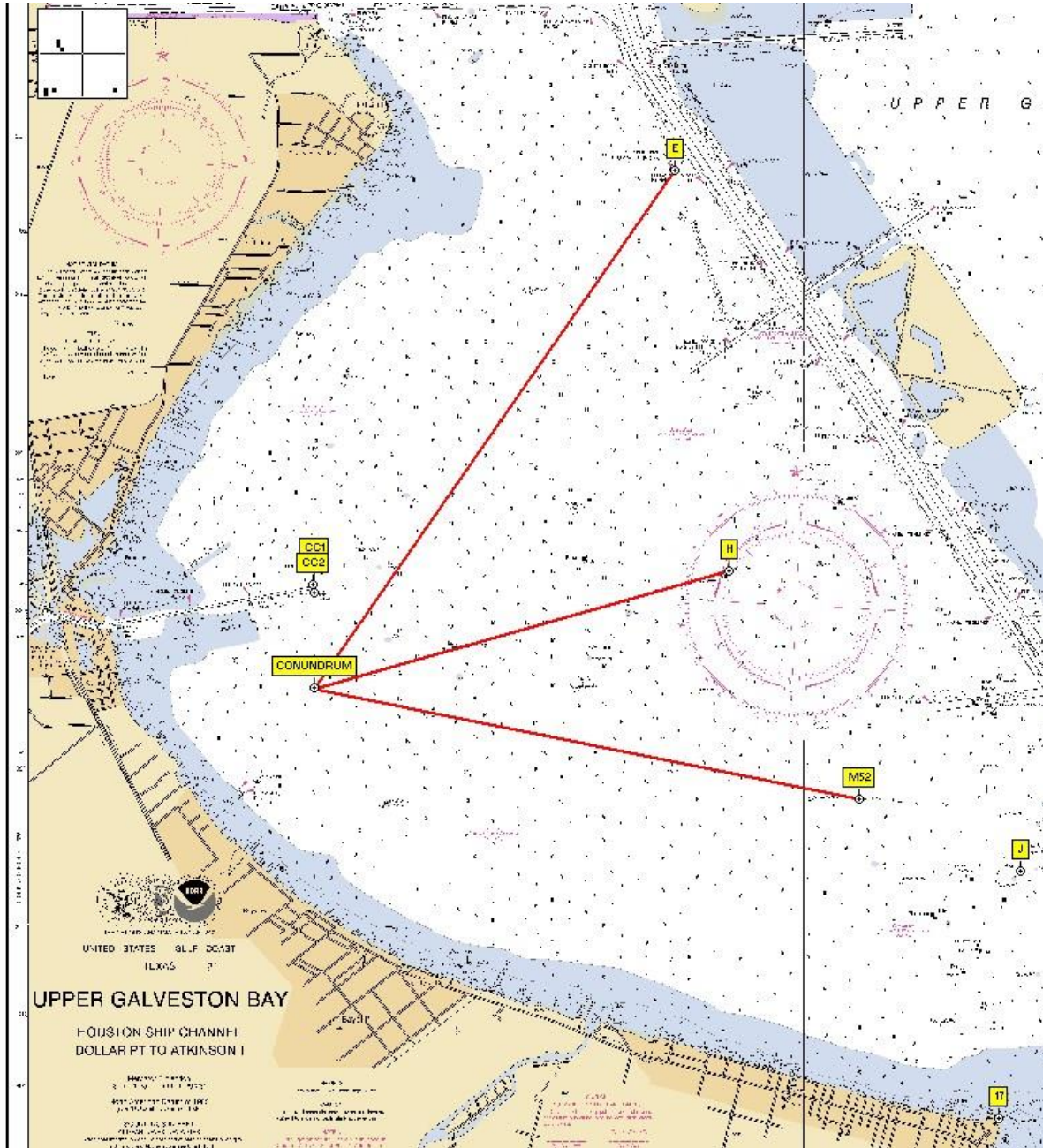
## 15. AWARDS PRESENTATION

Post-race party and awards presentation will be held at the GBCA Club House Saturday April 22<sup>nd</sup> after racing.

# Appendix A

## Course Diagram

(Not to be used for navigation)



**Appendix B  
Start Times**

Amended to:

Include Melges 24 sail 049., and change J80 sail 296 rating from 120 to 126.

<b>Start</b>	<b>Sail#</b>	<b>Skipper</b>	<b>Boat Name</b>	<b>Class/Fleet</b>	<b>PHRF</b>
11:01:41	12440	Arthur Boos Jr	Tenacious	Double Non-Spin	195
11:04:02	37	Duane Bez	Be Easy	Double Non-Spin	188
11:04:23	360	Bill Tarnick	Sunspot Baby	Double GBCA Cruising Club	187
11:07:04	114	Rafael Brom	SELAH	Double GBCA Cruising Club	179
11:12:27	273	Johnny Jones	Island Time	Double Non-Spin	163
11:13:08	044	Robert Best	Wine Knot	Double GBCA Cruising Club	161
11:17:30	31707	Tim Vogelsang	Tanura	Double Non-Spin	148
11:17:51	586	Marty Pedowicz	Hobgoblin	Double GBCA Cruising Club	147
11:22:33	28	Gary Trinklein	Toccata	Double Non-Spin	133
11:23:54	53	Chris Haas	SolAire	Double Spin	129
11:24:55	17	Ash Walker	GOOD NEWS	Double Non-Spin	126
11:24:55	296	Giorgio Martelli	B Sailing	Double Spin	126
11:33:00	202	Jason Seibert	Concussion	Double Spin	102
11:33:40	43764	Kevin Hayes	Psyched	Double Non-Spin	100
11:35:01	049	Mark Breen	Plausible Deniability	Double Spin	96
11:35:21	168	Walter Barnett	Osprey	Double Non-Spin	95
11:37:22	46864	Greg Casamayor	Joyride	Single Non-Spin	89
11:40:04	162	Tom Sutton	Leading Edge	Double Non-Spin	81
11:40:04	181	Albrecht Goethe	Hamburg	Double Non-Spin	81
11:41:04	649	Bill Lakenmacherr	Radiance	Double Spin	78
11:41:04	296	KevinBednar AllieCribbs	Stinger	Double Spin	78
11:51:51	49	William Johnson	Tri-ed 'N True	Double GBCA Cruising Club	46

