

Sailing Instructions

May 20 & 21, 2017



MUSTO *Shoe Regatta* OCEAN ENGINEERED *Sailing Instructions*

1. RULES

- 1.1 The regatta will be governed by the rules as defined by *The Racing Rules of Sailing 2017 – 2020* (RRS).
- 1.2 No national prescriptions will apply.
- 1.3 n/a
- 1.4 Racing rule(s) will be changed as follows:
 - 1.4.1 The penalty for violating RRS 31 by touching an anchored Race Committee Boat shall be to retire, and no exoneration is available. This modifies RRS 44.1 and 64.1(c).
 - 1.4.2 The penalty for violating a rule of Part 2 with the result that another boat touches an anchored Race Committee Boat shall be for the offending boat to retire.
- 1.5 n/a
- 1.6 n/a

2. NOTICES TO COMPETITORS

- 2.1 Notices to competitors will be posted on the official notice board located in the vicinity of the west end of the pool at Lakewood Yacht Club.

3. CHANGES TO SAILING INSTRUCTIONS

- 3.1 Any written change to the sailing instructions will be posted before 0800 hours on the day it will take effect, except that any change to the schedule of races will be posted by 2000 hours on the day before it will take effect.

- 3.2 Oral changes to the sailing instructions may be given on the water by hail on the appropriate VHF channel in accordance with RRS 90.2(c).

4. SIGNALS MADE ASHORE

- 4.1 Signals made ashore will be displayed on the yardarm at Lakewood Yacht Club.
- 4.2 When flag AP is displayed ashore, "1 minute" is replaced with "not less than 60 minutes" in the race signal AP.

5. SCHEDULE OF RACES

- 5.1 Dates of racing: May 20 and 21, 2017 for all lines.
- 1.1 Number of races: For each line, as many races as practical will be run for each class.
- 5.2 The Warning Signal for the first start each day will be no earlier than 1000 hours for all lines.
- 5.3 n/a
- 5.4 On the last scheduled day of racing no warning signal will be made after 1400.
- 5.5 Flag A displayed, with no sound, while boats are finishing means "no more racing today."

6. CLASSES, LINE ASSIGNMENTS AND STARTING SEQUENCES

- 6.1 Class line assignments and Class flags will be identified and designated in Attachment 2.

7. RACING AREA

- 7.1 The general racing area will be on Galveston Bay between Clear Creek Channel Marker #1, the Houston Ship Channel, Red Bluff and San Leon.
- 7.2 LINE A: The racing area will be Northeast of the Clear Creek Channel Marker #1.
- 7.3 LINE B: The racing area will be East of the Clear Creek Channel Marker #1.
- 7.4 LINE C: The racing area will be Southeast of the Clear Creek Channel Marker #1

8. THE COURSES

- A. **Line A ("Small" Boat Line)** - Classes will sail windward/leeward courses. No later than the Warning Signal, the Race Committee will display a numeral pennant indicating the number of legs to be sailed. Yellow tetrahedrons will be used for the original windward and leeward marks. The windward and offset marks are to be left to port. A leeward gate will be used. If only one leeward mark is in place, it shall be rounded to port. Course changes for the windward mark and leeward marks will be made in accordance with RRS 33 with a yellow mark being replaced by an orange mark, or an orange mark being replaced with a yellow mark. If a class flag is displayed with a C flag or an S flag, the visual signal applies only to that class.

B. **Line B (“Big” Boat Line)** - Classes will sail windward/leeward courses. No later than the Warning Signal, the Race Committee will display a numeral pennant indicating the number of legs to be sailed. Orange tetrahedrons will be used for the original windward and leeward marks. The windward and offset marks are to be left to port. A leeward gate will be used. If only one leeward mark is in place, it shall be rounded to port. Course changes for the windward mark will be made in accordance with RRS 33 with an orange windward mark being replaced by a yellow mark, or a yellow mark being replaced with an orange mark. To change a leeward gate or mark, the original mark(s) will be moved to a new position. If a class flag is displayed with a C flag or an S flag, the visual signal applies only to that class.

C. **Line C (Distance Line)** - Classes will sail a course selected from the “Distance Courses” listed in Attachment 1. No later than the warning Signal, the Race Committee will display, through the use of a numeral pennant, the course to be sailed. If a class flag is displayed with an S flag (“Shorten Course”), the visual signal applies only to that class.

9. MARKS

- 9.1 The marks to be used for Lines A and B will be dropped marks as described in SI 8.
- 9.2 The marks to be used for Line C are fixed marks.
- 9.3 The starting and finishing marks will be orange buoys.

10. AREAS THAT ARE OBSTRUCTIONS

The following areas are designated as obstructions:

- 10.1 For all Lines, the Houston Ship Channel is designated as an obstruction.
- 10.2 If a green tetrahedron is in place, the triangle formed by the green tetrahedron, the Line B windward mark, and the Line B offset mark is an obstruction for Line C boats only.

11. THE START

- 11.1 Races will be started by using RRS 26 with the warning signal made 5 minutes before the starting signal.
- 11.2 The starting line will be between a staff displaying an orange flag on the Race Committee Signal Boat at the starboard end and a tetrahedron or ball at the port end.
- 11.3 Boats whose Warning Signal has not been made shall avoid the starting area during the starting sequence for other races.
- 11.4 A boat that does not start within 10 minutes after her starting signal will be scored Did Not Start without a hearing. This changes RRS A4 and A5.
- 11.5 n/a

12. N/A

13. THE FINISH

- 13.1 The finishing line on Lines A and B will be between a staff displaying a blue flag on the Race Committee Signal Boat to Starboard and an orange ball or tetrahedron to Port.
- 13.2 The finishing line on Line C will be between a staff displaying an orange flag on the Race Committee Signal Boat to Port and an orange ball or tetrahedron to Starboard.

14. N/A

15. TIME LIMIT AND FINISHING WINDOW

- 15.1 For Lines A and B, any race in which no boat rounds the first windward mark within 45 minutes after its class start, or finishes within 2 hours of the start, will be abandoned.
- 15.2 For Lines A and B, after the first boat in a class finishes, any boat failing to finish within thirty (30) minutes after that boat will be scored DNF without a hearing. This changes RRS 35, A4.1, and A4.2.
- 15.3 For Distance Courses any race in which no boat rounds the first mark within 2 hours after its class start, or finishes within 4 hours of the start, will be abandoned.
- 15.4 For Distance Courses any boat that has not finished within one hour of the first boat in her class will be scored DNF without a hearing. This changes RRS 35, A4.1, and A4.2.

16. PROTESTS AND REQUESTS FOR REDRESS

- 16.1 The protest and redress procedures for this regatta will comply with the basic elements of RRS Appendix T. Appendix T1(b) is modified to read: "A Post-Race Penalty is a 20% Scoring Penalty calculated as stated in Rule 44.3 (c) if taken before the protest time limit expires. Otherwise, a Post-Race Penalty is a 30% Scoring Penalty calculated as stated in rule 44.3 (c). However, rule 44.1(a) applies.
- 16.2 Protest forms are available in the LYC Clubhouse Office. Protests and requests for redress or reopening shall be delivered there within the appropriate time limit.
- 16.3 For each line, the protest time limit is sixty (60) minutes after the Race Committee Signal Boat for that Line returns to the Lakewood Inner Harbor. This time will be posted on the official notice board. In the event the Race Committee Signal Boat does not return to the harbor, the protest time limit will begin one hour after notice of that fact is posted on the official notice board.
- 16.4 Notices of scheduled hearing times and locations will be posted within thirty (30) minutes of the expiration of the protest time limit to inform competitors of hearings in which they are parties or named as witnesses. Hearings are scheduled to be held in the Commodores Room, located

up the stairs from the clubhouse foyer, beginning at the time posted. All hearings will take place on Sunday May 21.

- 16.5 Notices of protests by the race committee or protest committee will be posted to inform boats under RRS 61.1(b).
- 16.6 n/a
- 16.7 n/a
- 16.8 On the last scheduled day of racing a request for redress based on a protest committee decision shall be delivered no later than 30 minutes after the decision was posted. This changes RRS 62.2.
- 16.9 Decisions of the protest committee will be final as provided in RRS 70.5.

17. SCORING

- 17.1 The Low Point Scoring System of Appendix A will apply. Each boat's total score shall be the sum of her scores for all races. No score will be excluded. This modifies Appendix A2.
- 17.2 One race shall constitute a regatta.
- 17.3 n/a
- 17.3 Boats in the PHRF and Cruising Classes will be scored using time-on-distance (TOD) scoring.

18. SAFETY REGULATIONS

- 18.1 Check-In: Before the Warning Signal for the race, a boat shall check-in with the Race Committee on the water by sailing past the stern of the anchored Race Committee Boat on starboard tack and hailing the boat's name, or sail number, until acknowledged by the Race Committee. Boats shall not check in via VHF Radio. Failure to check in is not subject to protest by another boat. In the event the Race Committee protests a boat for failure to check in, a scoring penalty of the loss of one finishing position will be assessed by the protest committee.
- 18.2 At each boat's check-in, every person on board shall be visible on deck wearing or holding a personal floatation device (PFD).
- 18.3 A boats that retires from a race shall notify the Race Committee at their earliest opportunity. Retiring boats should first attempt to notify the Race Committee via the assigned VHF Channel. If not possible, call the LYC office at 281-474-2511.

19 – 26 N/A

27. RADIO COMMUNICATION

- 27.1 The Race Committee will monitor and utilize the following VHF channels to communicate with racers:
- VHF Channel 68 on LINE A
 - VHF Channel 69 on LINE B
 - VHF Channel 72 on LINE C.

28 PRIZES

- 28.1 Trophies will be awarded for first and second place for classes with 4 or 5 boats and for first, second and third place for classes with more than 5 boats. Additional trophies may be awarded at the discretion of the Race Committee.
- 28.2 The name of the winner of the most competitive class – as determined by the Race Committee - will be added to the Shoe Regatta Challenge Cup Wheel perpetual trophy. Only spinnaker classes sailing windward/ leeward courses will be eligible.

29 DISCLAIMER OF LIABILITY

Competitors participate in the regatta entirely at their own risk. See RRS 4, Decision to Race. The organizing authority will not accept any liability for material damage or personal injury or death sustained in conjunction with or prior to, during, or after the regatta.

30 INSURANCE

Each participating boat shall be insured with valid third-party liability insurance with minimum coverage of \$300,000 per incident or the equivalent

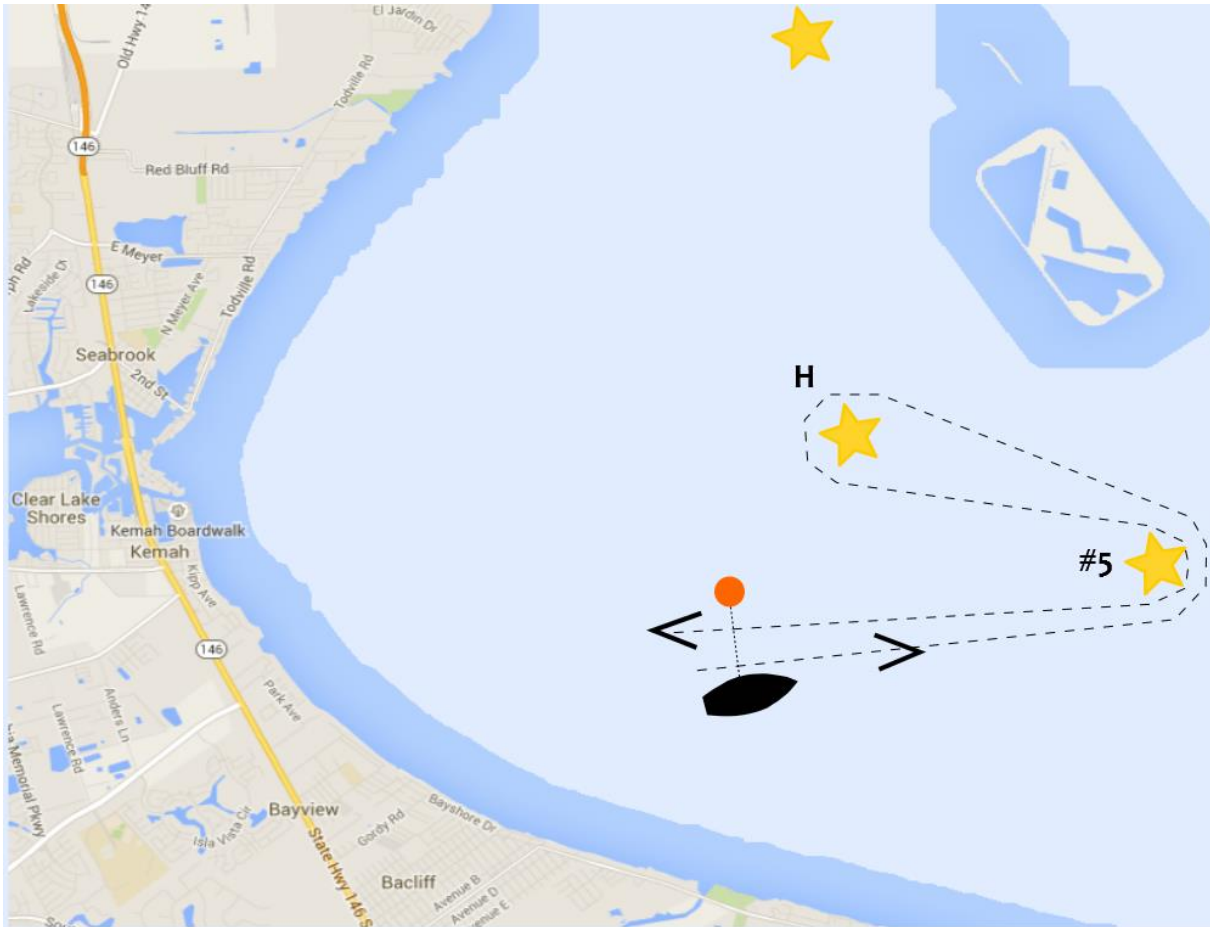
Attachment 1

DISTANCE COURSES

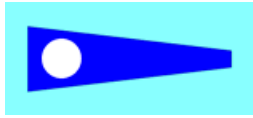
Course 1



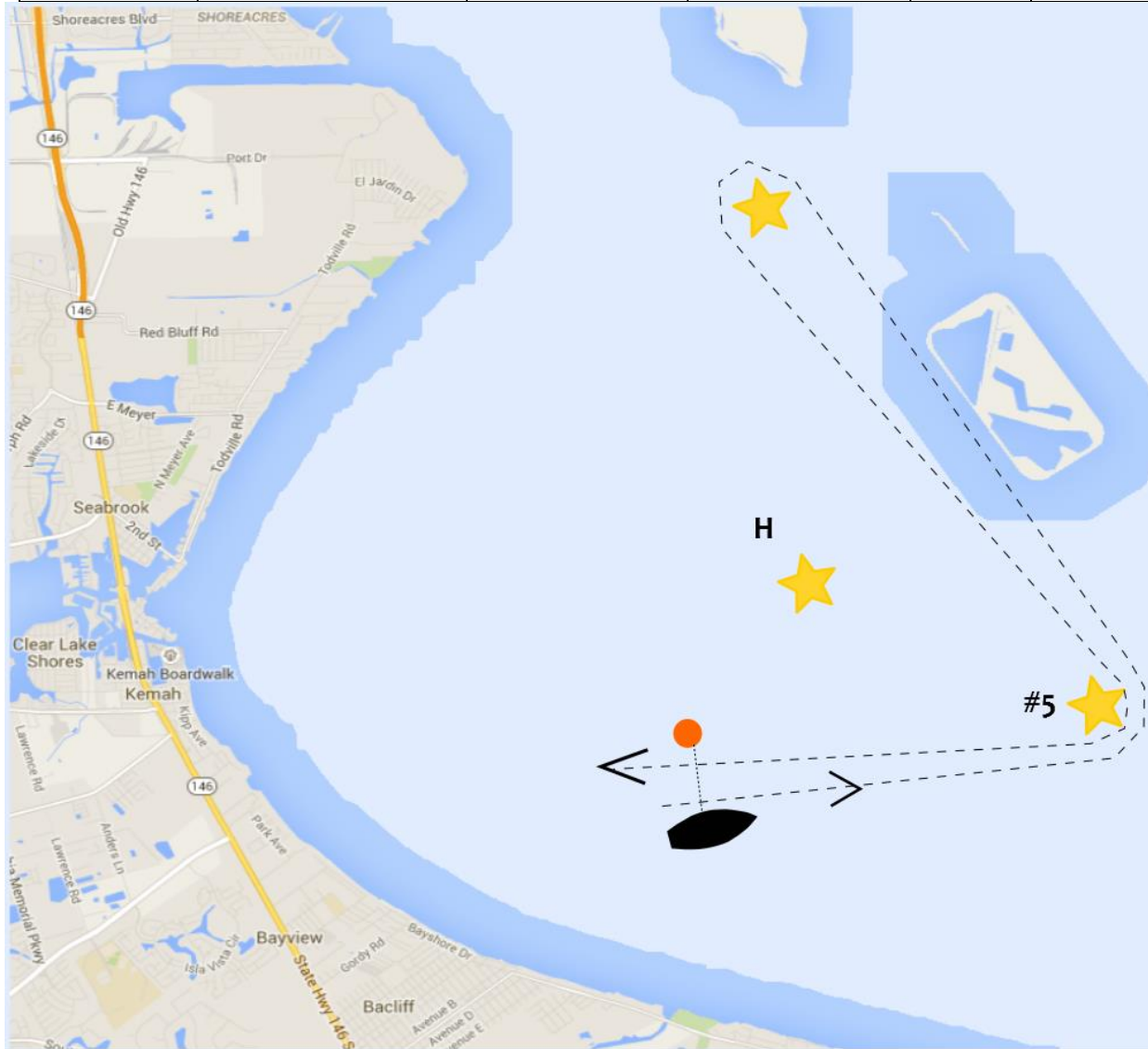
Name	Description	Approximate Lat	Approximate Lon	Approx. BRG	Dst (Nm)	Dst tot (Nm)
Start	Signal Boat to Stbd	29°31.570 N	094°57.400 W			
South Cut #5	South Cut #5 to Port	29°32.410 N	094°54.655 W	71°	2.53	2.53
GB H	H Mark to Port	29°33.255 N	094°56.542 W	297°	1.85	4.38
South Cut #5	South Cut #5 to Stbd	29°32.410 N	094°54.655 W	117°	1.85	6.22
Finish	Signal Boat to Port	29°31.570 N	094°57.400 W	251°	2.53	8.76



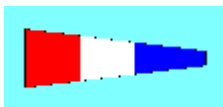
Course 2



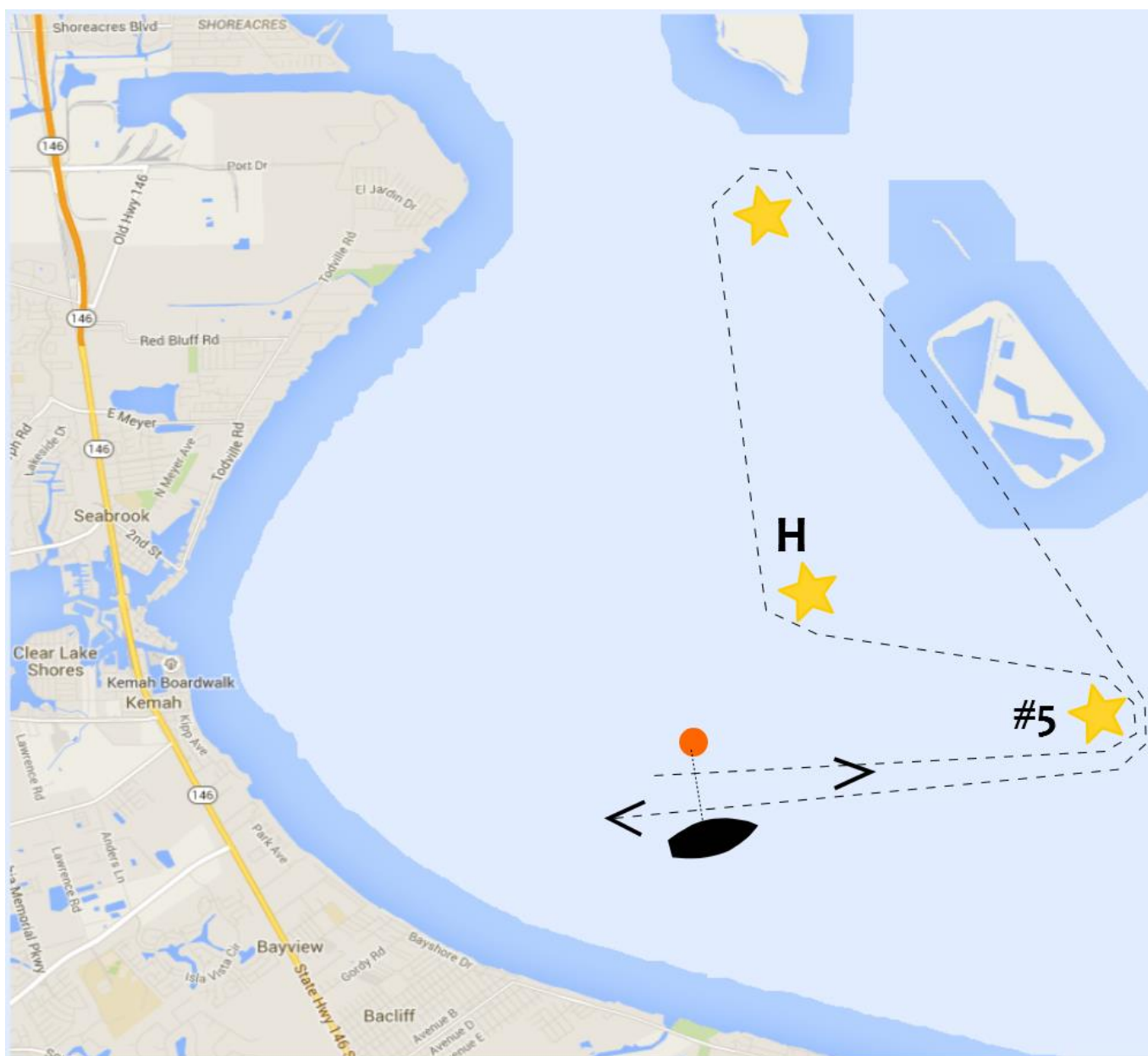
Name	Description	Approx. Lat	Approx. Lon	Approx. BRG	Dst (Nm)	Dst tot (Nm)
Start	Signal Boat to Stbd	29°31.570 N	094°57.400 W			
South Cut #5	South Cut #5 to Port	29°32.410 N	094°54.655 W	71°	2.53	2.53
Low Range	Low Range to Port	29°35.780 N	094°56.940 W	329°	3.91	6.44
South Cut #5	South Cut #5 to Stbd	29°32.410 N	094°54.655 W	149°	3.91	10.36
Finish	Signal Boat to Port	29°31.570 N	094°57.400 W	251°	2.53	12.89



Course 3



Name	Description	Approx. Lat	Approx. Lon	Approx. BRG	Dst (Nm)	Dst tot (Nm)
Start	Signal Boat to Stbd	29°31.570 N	094°57.400 W			
South Cut #5	South Cut #5 to Port	29°32.410 N	094°54.655 W	71°	2.53	2.53
GB H	H Mark to Stbd	29°33.255 N	094°56.542 W	297°	1.85	4.38
GB E Low Range	Low Range to Stbd	29°35.780 N	094°56.940 W	352°	2.55	6.93
South Cut #5	South Cut #5 to Stbd	29°32.410 N	094°54.655 W	149°	3.91	10.84
Finish	Signal Boat to Port	29°31.570 N	094°57.400 W	251°	2.53	13.37



Attachment 2

LINE ASSIGNMENTS, CLASS FLAG and STARTING SEQUENCE FOR THE FIRST RACE OF EACH DAY

The starting order may change for subsequent races

LINE A – “Small Boat” Windward/Leeward Signal Boat: “Vigilant”

CLASSES

J/70

J/22

FLAG

J/70 Class Flag

J/22 Class Flag

LINE B – “Big Boat” Windward/Leeward Signal Boat: “Cuban Gold”

CLASSES

PHRF Spin W/L

J/105

J/109

FLAG

Brown

J/105 Class Flag

J/109 Class Flag

LINE C – Distance

Signal Boat: “Bella Cosa” (Saturday) and “Fresh Start” (Sunday)

CLASSES

Cruising Classic Canvas Non-Spin

PHRF Non-Spin

Cruising Poleless Spin

FLAG

Green

Pink

Light Blue

