



# GBCA Texas Race Week

## Texas Offshore Racing Circuit

Gulf of Mexico - Galveston

July 13-15, 2017

## Sailing Instructions



### 1. Rules

The regatta will be governed by the *rules* as defined in the current *Racing Rules of Sailing* (RRS), including US Sailing Prescriptions, the International Rules for Prevention of Collision at Sea (COLREGS), the Notice of Race and these Sailing Instructions.

- Sailing Instruction 2 modifies RRS 63.1
- Sailing Instructions 7 & 8 modifies RRS 29
- Sailing Instructions 8 & 15.3 modifies RRS 62.1(a)
- Sailing Instruction 9 modifies RRS 32
- Sailing Instruction 10 modifies RRS 28
- Sailing Instruction 11 modifies RRS 35
- Sailing Instruction 12 modifies RRS 61
- Sailing Instruction 13 modifies RRS A2
- Sailing Instruction 15 modifies RRS 77 & G4

### 2. Owner's and Skippers Responsibilities

- 2.1 The safety of a yacht and her crew is the sole and inescapable responsibility of the skipper, who must ensure that the yacht is fully found, thoroughly seaworthy and manned by an experienced crew. The skipper is responsible to be fully knowledgeable of all the requirements and skills of offshore sailing.
- 2.2 It is the sole and inescapable responsibility of the skipper to decide whether to start or to continue a race.
- 2.3 The skipper shall ensure that all necessary equipment for safe offshore racing is carried on board and that all crew are instructed in its proper use.
- 2.4 Yachts MUST obey all maritime RULES OF THE ROAD when encountering vessels not racing. This is especially important when dealing with ship and other commercial traffic. Special attention is given to the Preamble of Part 2 of the RRS. Serious violation of applicable regulations shall be cause for disqualification by the Race Committee without hearing. This modifies Rule 63.1
- 2.5 Special attention is called to the shoal area that exists along the south side of the Galveston jetties. Skippers should have the most recent charts of the racing area and all Notice to Mariners.

### 3. Notices to Competitors

Official notices to competitors will be posted online at:

[https://www.regattanetwork.com/clubmgmt/applet\\_club\\_events.php?CLUB\\_ID=162](https://www.regattanetwork.com/clubmgmt/applet_club_events.php?CLUB_ID=162) .

Any written change to the sailing instructions, schedule of races or notice of race will be posted before 2000 the day before it will take effect. Any oral change will be communicated to each boat via VHF radio channel 69 at Check In.

### 4. Race Schedule

The warning signals for the daily races will not be before 1100 hours.

## **5. Race Area and Courses**

The race area will be the Bolivar Roads, Galveston Jetties and the waters of the Gulf of Mexico south of Galveston Island. The course to be sailed by class will be signaled by numeral flag and announced via VHF channel 69. Fixed Marks, Courses and Class Flags are described in Appendix A.

## **6. Check In**

Before the warning signal of each race, all yachts intending to race shall contact the Race Committee on VHF Channel 69 and hail the boat's name (or sail number) and the number of persons on board, until acknowledged by the Race Committee.

## **7. The Start**

- 7.1 The starting line will be in the Bolivar Roads area between HSC Marker #11 on the Port side and an orange flag or shape displayed on the south jetty shore or a signal boat on the Starboard side.
- 7.2 Boats whose preparatory signal has not been made shall keep clear of the starting area and of all boats whose preparatory signal has been made.
- 7.3 Any class subjected to a General Recall may be re-started after the last scheduled start for that race. This modifies RRS 29.2.
- 7.4 Yachts starting later than fifteen (15) minutes after their starting signal will be allowed only at the discretion of the Race Committee.
- 7.5 Yachts shall avoid commercial ship channel traffic.
- 7.6 Yachts shall keep Channel Marker 5A to Starboard when entering into the Gulf of Mexico.

## **8. STARTING SIGNALS**

- 8.1 The course to be sailed will be designated by a numeral pennant and announced on VHF Channel 69. It is likely that spinnaker, non-spinnaker and cruising classes will sail different courses.
- 8.2 Starting order of classes may vary on conditions and courses.
- 8.3 The Race Committee may give a countdown on VHF Channel 69 prior to the raising/lowering of each signal flag.
- 8.4 As a courtesy, the Race Committee may attempt to hail recalled yachts. Failure of the race committee to make this broadcast, failure of a boat to receive the broadcast, a boat's order in that broadcast or the promptness of the broadcast shall not be subject to redress. This modifies RRS 29 and RRS 62.1(a).

## **9. Shorten Course**

- 9.1 If the Race Committee displays the "S" code flag with one or more class flags, the shortened course applies only to those classes.
- 9.2 If the "S" code flag is flown alone, all classes will sail the shortened course. This modifies RRS 32.

## **10. The Finish**

- 10.1 The Finish Line for all courses will be in the Bolivar Roads area between an orange flag or shape displayed from shore or a signal boat on the port end and HSC Marker #11 on the starboard end.
- 10.2 Yachts shall avoid commercial ship channel traffic.
- 10.3 Yachts shall keep Channel Marker 5A to port when entering the Jetties.
- 10.4 Finishing Procedures: In the event that a yacht cannot reach the Race Committee by VHF or the Race Committee is not on station, she shall continue to the finish line, take her own finish time and report it to the Race Committee as soon as possible. This modifies RRS 28

## **11. Time Limit**

Time limit for each race shall be six (6) hours from the class start times. Yachts exceeding the time limit will be scored Did Not Finish (DNF). This modifies RRS 35.

## **12. Protests**

RRS Appendix T – Arbitration – will be in effect. Intent to protest shall be communicated to the Race Committee by VHF channel 69 before leaving the race area and must be filed in writing prior to 1900 hours at the after-race social location for that day. The protest hearing may be held at a later date. This modifies RRS 61.

## **13. Scoring**

The Low Point system, RRS Appendix A will apply. One race constitutes a series. There will be no throw-outs, except for purposes of Texas Navy Cup scoring. This modifies RRS A2

## **14. Texas Offshore Racing Circuit (TORC) - Texas Navy Cup**

The Texas Navy Cup will be awarded to the PHRF Spinnaker yacht with the lowest Navy Cup Fleet score combining two races of the GBCA Texas Race Week and the lowest Navy Cup Fleet score of the LYC Heald Bank race and the HYC Offshore Freeport Race. The Navy Cup Fleet consists only of those PHRF Spinnaker yachts that participated in all three regattas. Yachts that did not participate in the LYC or HYC races are not eligible for the purposes of Texas Navy Cup scoring.

## **15. Sail Numbers**

Boats shall carry USSA, class, or hull numbers on mainsails, spinnakers, and each overlapping headsail having a luff perpendicular exceeding 130% of the base of the fore triangle. These sail numbers shall correspond to the sail numbers listed on the scratch sheet, unless different numbers or identification are approved by the Race Committee. Notification of such approval will be posted before 0800 on the day approval is given at:

[https://www.regattanetwork.com/clubmgmt/applet\\_club\\_events.php?CLUB\\_ID=162](https://www.regattanetwork.com/clubmgmt/applet_club_events.php?CLUB_ID=162)

This is not subject to protest. This modifies RRS 77 & Append G4.

## **16. Safety**

- 16.1 A boat that retires from a race prior to finishing shall notify the Race Committee as soon as practicable on VHF channel 69. If radio communication is unavailable, call the Race Committee phone number: 281.433.4645 and leave a message.
- 16.2 Attention is called to RRS 4: Decision to Race, "The responsibility for a boat's decision to participate in a race or to continue *racing* is hers alone."

## **17. Communication**

- 17.1 Radio communication will be conducted on VHF channel 69.
- 17.2 The Race Committee will attempt to monitor and may make courtesy announcements on VHF channel 69. The failure of the Race Committee to make announcements or the manner in which announcements are made will not be grounds for redress. This modifies RRS 62.1(a).
- 17.3 If a weather-related postponement is required it will be announced at 2 hours prior to the warning signal on VHF Channel 69.

# Scratch Sheet

*\*Subject to change until racing starts.\**

## GBCA Cruising Class

<u>Skipper</u>	<u>Club</u>	<u>Sail#</u>	<u>Boat Name</u>	<u>Fleet / Division</u>	<u>Make/Model</u>	<u>Rating</u>	<u>Date Entered</u>
1. William Johnson	GBCA	49	Tri-ed 'N True	GBCA Cruising Class /	Corsair / F27	43	06/04/2017
2. Robert Hunkins	LYC/GBCA	31630	Leopard	GBCA Cruising Class /	S2 Tiara / 10.3	120	05/26/2017
3. Mike Janota	Sea Star Base Galveston	3	La Isla	GBCA Cruising Class /	C&C / 57	138	07/07/2017
4. James David Glascock	HYC, GBCA, TMCA	N/A	Shell Seaker	GBCA Cruising Class /	Catalina / C-400 Mk2	168	06/04/2017
5. Ronald Eddleman	GBCA, TMCA	133	Stellar of Course	GBCA Cruising Class /	Cal / 33-2	200	06/02/2017
6. E Wayne Alderman	GBCA/Watergate	none	Stardust	GBCA Cruising Class /	Pacific Seacraft / Crealock 34	289	06/01/2017

## PHRF Non-Spin

<u>Skipper</u>	<u>Club</u>	<u>Sail#</u>	<u>Boat Name</u>	<u>Fleet / Division</u>	<u>Make/Model</u>	<u>Rating</u>	<u>Date Entered</u>
1. Walter Barnett	GBCA	168	Osprey	PHRF Non-Spin /	Beneteau / First 42s7	95	04/30/2017
2. HANS KNICKREHM	LYC	1152	SEUTE DEERN	PHRF Non-Spin /	TRINTELLA /	129	06/07/2017
3. Brantly Minor	GBCA	001	Other Woman	PHRF Non-Spin /	Beneteau / Oceanis 400	137	06/09/2017
4. Joan van Ravenswaay	HYC	60187	Sea Nymph	PHRF Non-Spin /	Beneteau / Moorings 432	154	05/03/2017
5. Arthur / Jim Boos / Apple	GBCA	12440	Tenacious	PHRF Non-Spin /	Morgan / 27	195	06/27/2017
6. John Mastroianni	HYC	130	Andiamo	PHRF Non-Spin /	Pacific Seacraft / PS31	235	06/09/2017

## PHRF Spin

<u>Skipper</u>	<u>Club</u>	<u>Sail#</u>	<u>Boat Name</u>	<u>Fleet / Division</u>	<u>Make/Model</u>	<u>Rating</u>	<u>Date Entered</u>
1. J.D. Hill	LYC / GBCA	USA74	Second Star	PHRF Spin /	J/Boats / J/122	33	05/30/2017
2. Gregory Way	LYC	75	Gold Rush	PHRF Spin /	C&C / 115	66	05/21/2017
3. Greg Casamayor	GBCA	46864	Joyride	PHRF Spin /	Beneteau / First 42S7	75	06/15/2017
4. Roy Olsen	GBCA	10312	Danelaw	PHRF Spin /	Morgan / 42-2	111	05/30/2017
5. Chris Haas	GBCA	53	SolAire	PHRF Spin /	Ericson / 39	129	06/12/2017

## Appendix A

### Marks

Mark	Latitude	Longitude
Galveston Jetty HSC 11	N 29° 20.53'	W 094° 44.47'
Galveston Jetty HSC 5A	N 29° 19.67'	W 094° 41.34'
GA 151 A	N 29° 13.53'	W 094° 34.69'
GA 190	N 29° 08.50'	W 094° 40.18'
GA.187L-A	N 29° 08.52'	W 094° 47.83'
East Beach Set Orange Tetrahedron "O-EB"	N 29° 19.29 (approx.)	W 094° 43.70' (approx.)
East Beach W/L 'Variable' Yellow Tetrahedron "Y-EB"	1-2 miles to windward of Set Tetrahedron "O" * (or leeward of "O", if northerly breeze exists)	
Pleasure Pier Set Orange Tetrahedron "O-PP"	N 29° 16.93' (approx.)	W 094° 47.31' (approx.)
Pleasure Pier W/L 'Variable' Yellow Tetrahedron "Y-PP"	1-2 miles to windward of Set Tetrahedron "O" * (or leeward of "O", if northerly breeze exists)	

### Courses

Course #	Mark	Distance (nm)	Bearing (°)	Rounding
<u>1</u>	Start @ HSC 11	0.00		Port
	HSC 5A	2.94	104	Starboard
	"O"	5.93(PP) / 2.15 (EB)	239(PP) / 257 (EB)	Port
	"Y"	1.00 - 2.00	Windward (*)	Port
	HSC 5A	TBD	TBD	Port
	Finish @ HSC 11	2.94	284	Starboard

Course #	Mark	Distance (nm)	Bearing (°)	Rounding
<u>2</u>	Start @ HSC 11	0.00		Port
	HSC 5A	2.94	104	Starboard
	"O"	5.93(PP) / 2.15 (EB)	239(PP) / 257 (EB)	Port
	"Y"	1.00 - 2.00	Windward (*)	Port
	"O"	1.00 - 2.00	Leeward (*)	Port
	"Y"	1.00 - 2.00	Windward (*)	Port
	HSC 5A	TBD	TBD	Port
	Finish @ HSC 11	2.94	284	Starboard

Course #	Mark	Distance (nm)	Bearing (°)	Rounding
<u>3</u>	Start @ HSC 11	0.00		Port
	HSC 5A	2.94	104	Starboard
	"O"	5.93(PP) / 2.15 (EB)	239(PP) / 257 (EB)	Port
	"Y"	1.00 - 2.00	Windward (*)	Port
	"O"	1.00 - 2.00	Leeward (*)	Port
	"Y"	1.00 - 2.00	Windward (*)	Port
	"O"	1.00 - 2.00	Leeward (*)	Port
	"Y"	1.00 - 2.00	Windward (*)	Port
	HSC 5A	TBD	TBD	Port
	Finish @ HSC 11	2.94	284	Starboard

Course #	Mark	Distance (nm)	Bearing (°)	Rounding
<u>4</u>	Start @ HSC 11	0.00		Port
	HSC 5A	2.94	104	Starboard
	GA 151A	8.40	133	Port
	HSC 5A	8.40	313	Port
	Finish @ HSC 11	2.94	284	Starboard
Total		22.68		

Course #	Mark	Distance (nm)	Bearing (°)	Rounding
<u>5</u>	Start @ HSC 11	0.00		Port
	HSC 5A	2.94	104	Starboard
	GA 190	11.20	171	Port
	HSC 5A	11.20	351	Port
	Finish @ HSC 11	2.94	284	Starboard
Total		28.28		

Course #	Mark	Distance (nm)	Bearing (°)	Rounding
<u>6</u>	Start @ HSC 11	0.00		Port
	HSC 5A	2.94	104	Starboard
	GA 187 "L-A"	12.5	203	Port
	HSC 5A	12.5	023	Port
	Finish @ HSC 11	2.94	284	Starboard
Total		30.88		

Course #	Mark	Distance (nm)	Bearing (°)	Rounding
<u>7</u>	Start @ HSC 11	0.00		Port
	HSC 5A	2.94	104	Starboard
	GA 190	11.20	171	Port
	GA 151A	6.96	044	Port
	HSC 5A	8.40	313	Port
	Finish @ HSC 11	2.94	284	Starboard
Total		32.44		

Course #	Mark	Distance (nm)	Bearing (°)	Rounding
<u>8</u>	Start @ HSC 11	0.00		Port
	HSC 5A	2.94	104	Starboard
	GA 151A	8.40	133	Starboard
	GA 190	6.96	220	Starboard
	HSC 5A	11.20	351	Port
	Finish @ HSC 11	2.94	284	Starboard
Total		32.44		

CLASS	FLAG
PHRF Spinnaker	Pink
PHRF Non-Spinnaker	Blue
GBCA Cruising Class	Green

---

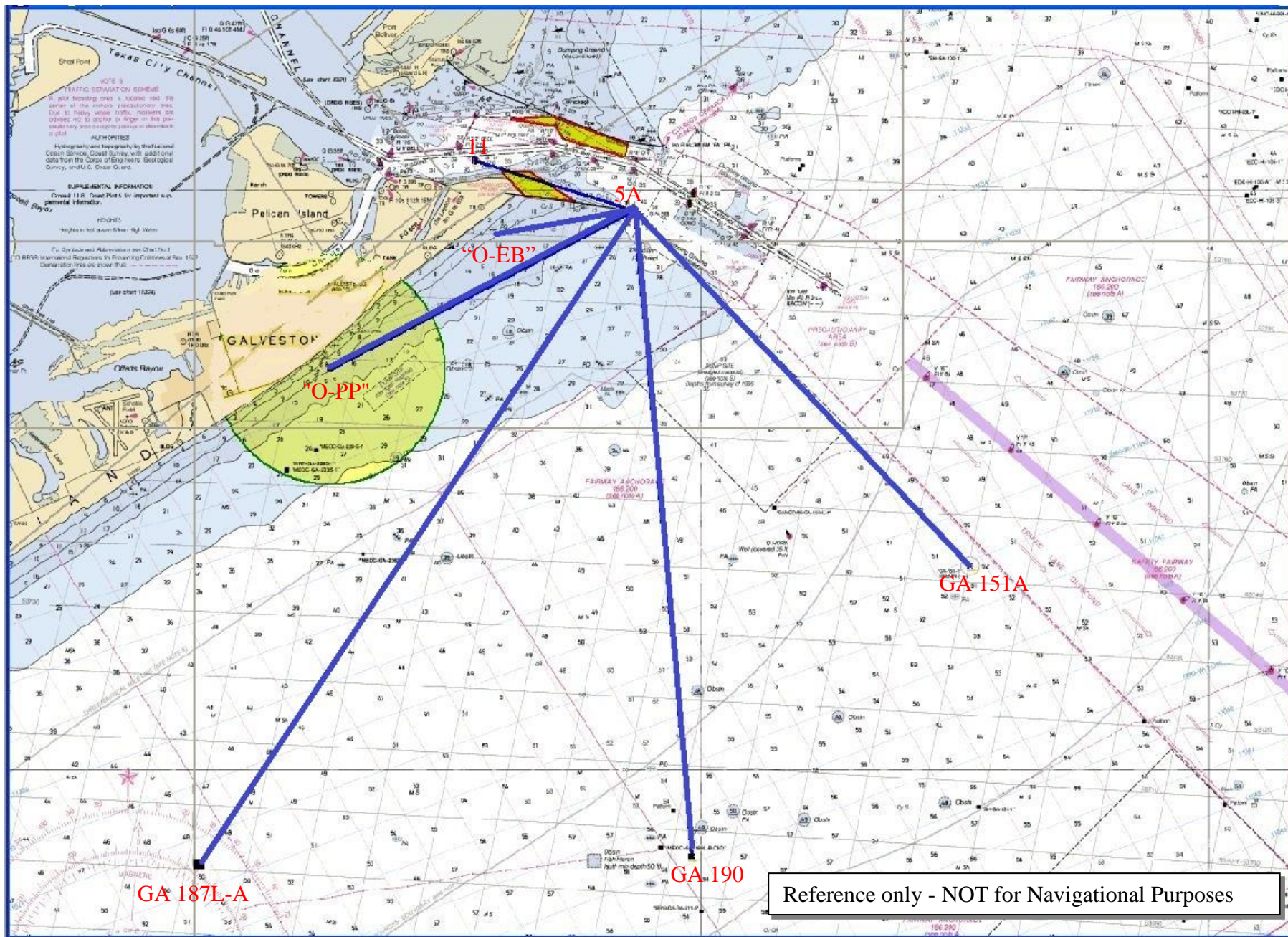
*Thanks to our Sponsors*

# **C & C SAILMAKERS**

## **threefatbrothers.com**









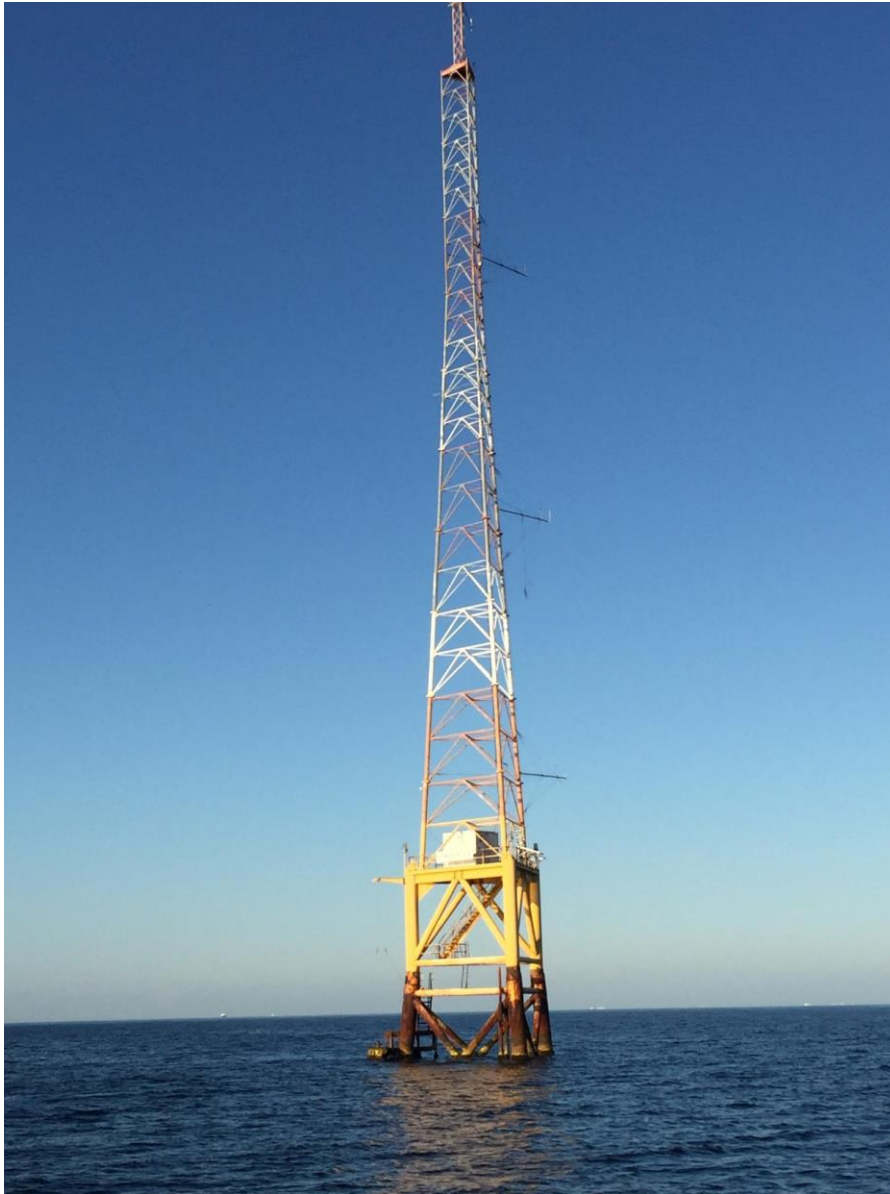


**“GA 151 A” Approximate Position: N 29° 13.53’ W 94° 34.69’**



**"GA 190" Approximate Position: N 29° 08.50' W 094° 40.18'**





**"GA 187L-A" Approximate Position: N 29° 08.52' W 094° 47.83'**