



# **2017 El Toro Junior & Senior North American Championships**

**August 2-5, 2017  
Richmond, California**

## **Sailing Instructions**

### **1 Rules**

- 1.1 The El Toro Junior and Senior North American Championships (the Regatta) will be governed by the rules as defined in The Racing Rules of Sailing (RRS), the El Toro International Yacht Racing Association (ETIYRA).
- 1.2 The preamble to Part 4 and RRS 40 are changed to require that USCG approved personal flotation shall be worn at all times on the water except for brief periods while changing or adjusting clothing. "Y" flag will not be displayed.
- 1.3 Appendix V1 of RRS applies.
- 1.4 On the water umpiring, Appendix P will be in effect for RRS 42. A judge's flag will be displayed on the judge's boat.

### **2 Notice to Competitors**

- 2.1 Notices to competitors will be posted on the official notice board located on the ground floor of the club in the Junior room and on the regatta website ([regattanetwork.com](http://regattanetwork.com)).

### **3 Changes to Sailing Instructions**

- 3.1 Any changes to the Sailing Instructions will be posted before 0800 on the day they will take effect.

#### **4 Signals Made Ashore**

- 4.1 Signals made ashore will be displayed from the flagpole located on the upper deck of the clubhouse.
- 4.2 When flag AP is displayed ashore, 1 minute is replaced by not less than 60 minutes. This changes race signals.

#### **5 Hiking Pants**

The use of shorts or pants with battens or stiff padding that increase hiking leverage is prohibited.

#### **6 Schedule of Competitors Meeting and Races**

- 6.1 Wednesday, August 2<sup>nd</sup>
  - 0915** Competitors meeting on upper deck of RYC
  - 1100** Practice races
- 6.2 Thursday, August 3<sup>rd</sup>, First warning at **1000 hours**  
Race 1 followed by Race 2
- 6.3 Friday, August 4<sup>th</sup>, First warning at **1000 hours**  
Race 3 followed by Race 4
- 6.4 Saturday, August 5<sup>th</sup>, First warning at **1000 hours**  
Race 5 followed by Race 6
- 6.5 A 3<sup>rd</sup> race on August 4<sup>th</sup> or 5<sup>th</sup> may be attempted, if necessary to complete a 6 race series.
- 6.6 On August 5<sup>th</sup>, no warning signal shall be made after 1500.

#### **7 Class Flags**

- 7.1 The Senior division class flag shall be code flag E.
- 7.2 The Junior division class flag shall be code flag J.

#### **8 Racing Area**

- 8.1 Appendices 1 and 2 show the 3 racing areas, and the commute lanes to and from each.
- 8.2 Code flags A, B, or C will be displayed from the flagpole to designate the racing area for the day.

## 9 Courses and Marks

- 9.1 Appendix 3 shows the courses and marks, including approximate angles between legs, the order in which marks are to be passed, and the start and finish lines are restricted and constitute obstructions.
- 9.2 After starting and before finishing the start and finish lines are restricted and constitute obstructions.

## 10 The Start

- 10.1 The starting line will be between a staff displaying an orange flag on the committee boat and start mark "S" on the port end.
- 10.2 Boats whose warning signal has not been made shall avoid the starting area during starting sequence of other races.
- 10.3 A boat failing to start within 4 minutes after their starting signal will be scored DNS without a hearing. This changes PRS A4 and A5.

## 11 The Finish

- 11.1 The finish line will be between a staff displaying an orange flag on the committee boat and finishing mark "F".

## 12 Time Limits

- 12.1 The time limit for each race shall be 1 hour for the first boat to sail the course and finish.
- 12.2 Boats failing to finish within 20 minutes after the first boat finishes will be scored DNF without a hearing.

## 13 Safety

- 13.1 A boat that retires from a race is requested to notify the race committee as soon as possible.
- 13.2 A boat that retires from racing for the day shall remain in the race area unless and until authorized by the race committee to return to the RYC harbor. They shall report their safe return to the harbormaster or dock master.
- 13.3 Commercial traffic has right-of-way in the Pt. Potrero Channel. Rule 9 of the Inland Rules of the Road state that boats shall not impede the passage of a vessel that can safely navigate only within a narrow channel or fairway. **Be Aware**, there are some very large ships using the channel.

- 13.4 Skippers are not required to wear wet suits or dry suits. The race committee recommends that skippers who are not experienced sailing in 60° water should wear them, furthermore that all skippers consider wearing them on windy days.

## **14 Protests**

- 14.1 Protest forms are available in the Junior room on the official notice board.
- 14.2 Protest requests for redress or reopening shall be delivered there within the time limit.
- 14.3 The time limit for filing a protest the 30 minutes after the race committee signal docks.
- 14.4 Notices will be posted no later than 30 minutes after the protest time limit to inform competitors of hearings in which they are parties or named as witnesses. Hearings will be held in the library/board room adjacent to the Junior room.

## **15 Scoring**

- 15.1 Two races are required to be completed to constitute a championship series.
- 15.2 If fewer than 6 races have been completed after the last race, a boat's series score will be the total of their race scores. This changes A2.

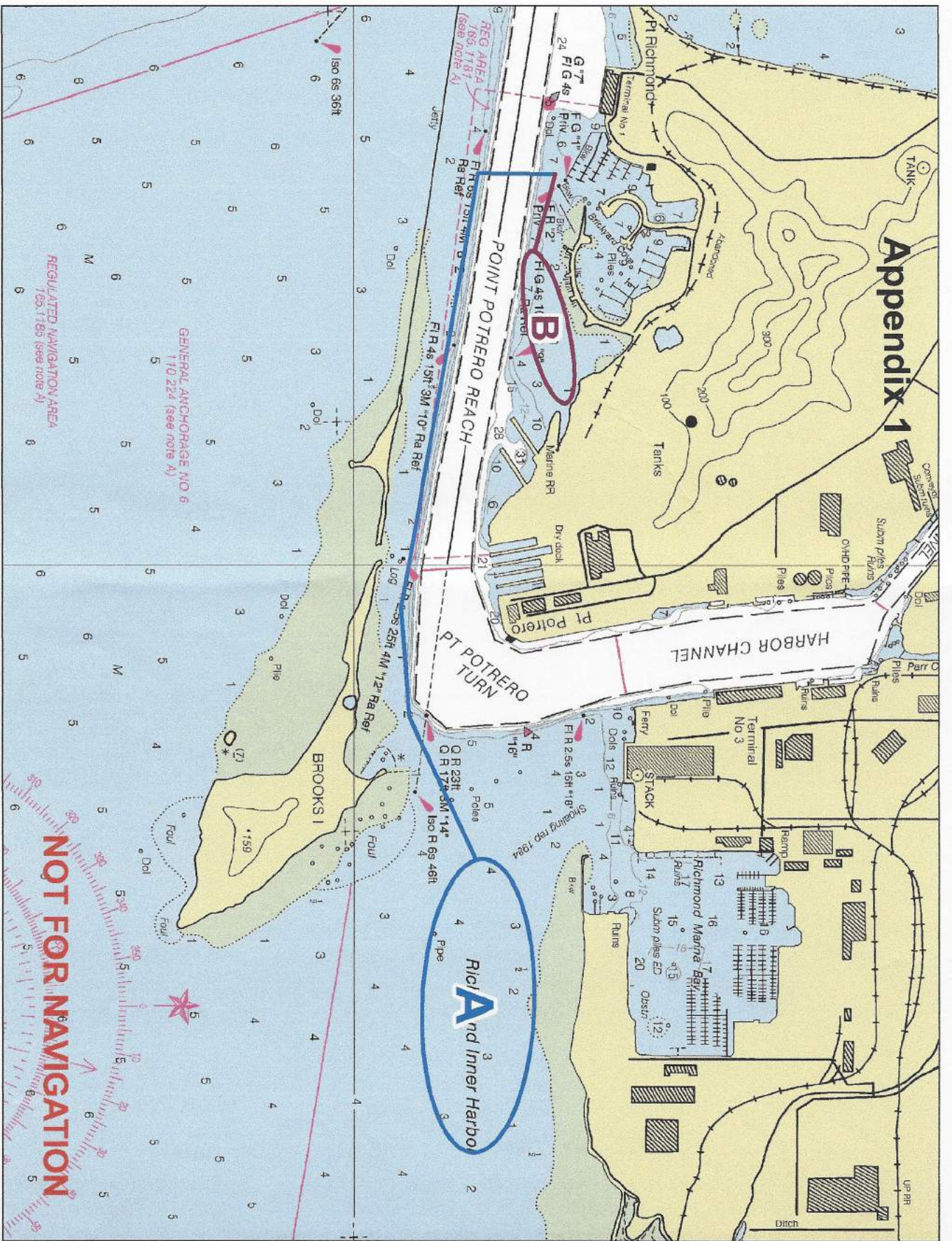
## **16 Support Persons**

- 16.1 Support persons shall stay 100 meters outside areas where boats are racing from the time of the preparatory signal for the first division to start until all boats have finished or retired or the race committee signals a postponement, general recall or abandonment.

## **17 Prizes**

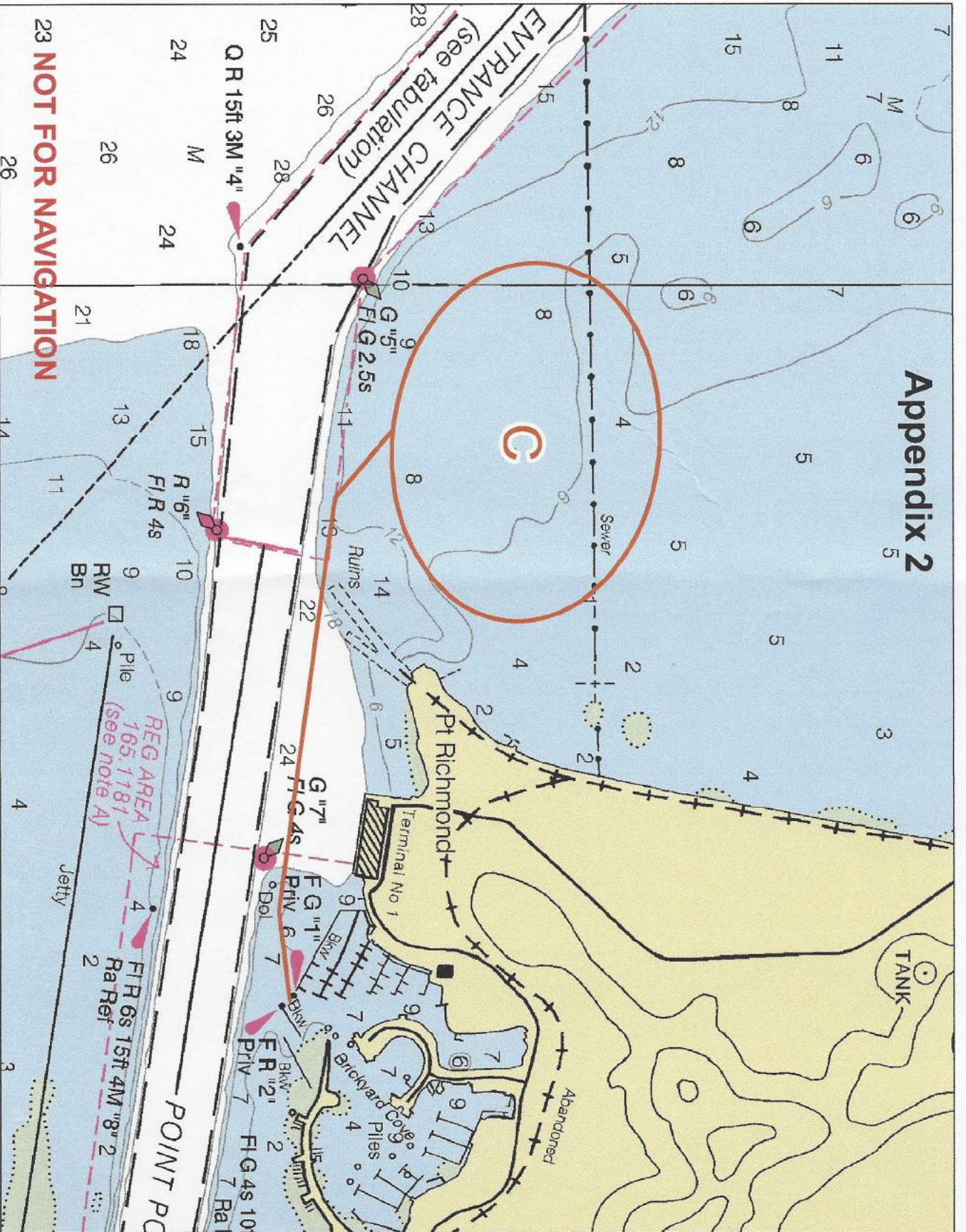
- 17.1 Prizes will be awarded on August 5<sup>th</sup>, at a prize ceremony.

# Appendix 1



**NOT FOR NAVIGATION**

# Appendix 2



**23 NOT FOR NAVIGATION**

## APPENDIX 3

### COURSES

**Course 1** – Start – Mark 1 (port) – Gate – Finish

**Course 2** – Start – Mark 1 (port) – Gate – Mark 1 (port) – Gate – Finish

**Course 3** – Start – Mark 1 (port) – Gate – Mark 1 (port) – Gate – Mark 1 – (port) – Gate – Finish

Mark 1



Mark S



RC  
Boat



Mark F



Gate 1



Gate 2

