



**11th Buzzelli Multihull Rendezvous
with 38th Stiletto Nationals
Sailing Instructions**



October 20 – 22, 2017

The organizing authority: Sarasota Sailing Squadron

[DP] – The notation of DP in a rule in the Sailing Instructions (SI) means that the penalty for a breach of that rule may, at the discretion of the protest committee, be less than disqualification.

1. RULES

The regatta will be governed by the *rules* as defined in *The Racing Rules of Sailing*, WFPHRF Class and applicable One-Design Class Rules

2. NOTICES TO COMPETITORS

Notices to competitors will be posted on the official notice board located in the Squadron pavilion on the north side of the club.

3. CHANGES TO SAILING INSTRUCTIONS

Any change to the sailing instructions will be posted before 0900 on the day it will take effect, except that any change to the schedule of races will be posted by 1900 on the day before it will take effect.

4. SIGNALS MADE ASHORE

- 4.1. Signals made ashore will be displayed at the flagpole in front of the clubhouse.
- 4.2. When flag AP is displayed ashore, '1 minute' is replaced by 'not less than 60 minutes' in the race signal AP.

5. SCHEDULE

Day	Time	
Fri	0830 - 0900	Registration 3 day sailors
	0930	Competitors' Meeting
	1200	Warning Signal – 1 st race
	1800 -1900	Registration 2 day sailors
Sat	0830 - 0930	Registration 2 day sailors
	1000	Competitors' Meeting
	1100	Warning Signal- 1 st race
Sun	1000	Warning Signal- 1 st race
	1500	No Warning after this time

6. CLASS FLAGS

The class flags are described in Attachment I.

7. RACING AREA

Attachment I shows the location of the course racing areas.

8. THE COURSES

Gulf Long Distance Race (For Stiletto and PHRF Multihull Classes) Attachment II shows the approximate location of the marks and their descriptions.

Course Races - The diagrams in Attachment III show the courses, including the approximate angles between legs and the order in which marks are to be passed and the side on which the mark is to be left.

9. MARKS

Marks are described in Attachment I.

10. THE START and FINISHES

- 10.1. Gulf Long Distance Race (Friday only) – Start area will be west of New Pass in the Gulf of Mexico. The starting line and finishing line will be between a staff displaying an orange flag on the race committee signal boat and an inflatable mark located near the New Pass Government mark "NP".
- 10.2. Course Races – The starting line will be between a staff displaying an orange flag and the start mark. The finishing line will be between a staff displaying an orange flag and the finish mark.
- 10.3. Boats whose warning signal has not been made shall avoid the starting area during the starting sequence for other races. [DP]
- 10.4. A boat starting later than 4 minutes after her starting signal will be scored Did Not Start without a hearing. This changes rule A4 and A5.

11. CHANGE OF THE NEXT LEG OF THE COURSE

- 11.1. To change the next leg of the course, the race committee will lay a new mark (or move the finishing line) and remove the original mark as soon as practicable.
- 11.2. In the event of the next leg change of the course, mark 1a will not be relocated. All classes shall round the new mark 1 leaving it to port.

12. PENALTY SYSTEM

- 12.1. Rule 44.1 is changed so that the Two-Turns Penalty is replaced by One-Turn Penalty.

13. TIME LIMIT

- 13.1. Gulf Long Distance Race – 1700 Friday October 20.
- 13.2. Course Races - Boats failing to finish within 30 minutes after the first boat in their class sails the course and finishes will be scored DNF without a hearing. This changes RRS 35, A4 and A5.

14. PROTESTS AND REQUESTS FOR REDRESS

- 14.1. Protest forms are available outside the Club Office. Protests and requests for redress shall be delivered there within 60 minutes after the race committee signal boat docks. The docking time will be posted on the Official Notice Board.



**11th Buzzelli Multihull Rendezvous
with 38th Stiletto Nationals
Sailing Instructions**

October 20 – 22, 2017

The organizing authority: Sarasota Sailing Squadron



14.2. Notices will be posted no later than 30 minutes after the protest time limit to inform competitors of hearings in which they are parties or named as witnesses. Hearings will be held in the club office beginning at the time posted.

14.3. Notices of protests by the race committee, technical committee or protest committee will be posted to inform boats under rule 61.1(b).

14.4. On the last scheduled day of racing a request for redress based on a protest committee decision shall be delivered no later than 30 minutes after the decision was posted. This changes rule 62.2.

15. SCORING

15.1. The Low-Point Scoring System of Appendix A will apply except no race will be excluded. This changes rule A.2.

15.2. One race is required to be completed to constitute a series.

15.3. Rating systems used will be PHRF (time-on-distance) and Portsmouth (time-on-time) as appropriate for the fleet, classes and divisions that are formed. If no rating is available, the Organizing Authority may in its sole discretion assign a provisional rating for this event only.

15.4. Scoring for the 3-day sailors is based on an aggregate of all races sailed Friday through Sunday.

15.5. Scoring for the 2-day sailors is based on an aggregate of all races sailed Saturday through Sunday.

16. SAFETY REGULATIONS

16.1. Check-Out and Check-In: Boats must check in and received acknowledgement from the race committee before the first race of each day. [DP]

16.2. A boat that retires from a race shall notify the race committee as soon as possible. [DP]

17. EQUIPMENT AND MEASUREMENT CHECKS

A boat or equipment may be inspected at any time for compliance with the class rules and sailing instructions.

18. RADIO COMMUNICATION

Except in an emergency, a boat that is racing shall not make voice or data transmissions and shall not receive voice or data communication that is not available to all boats. This restriction does not apply when a crew member may place or receive calls of a personal nature that do not involve the exchange of information which could affect the boat's outcome in a race. [DP]

19. PRIZES

19.1. Prizes will be given to each boat placing first, second and third in each class with five or more entries; to those placing first and second in classes with four entries and to the first place competitor in classes with three entries.

19.2. The 'Robert Anthony Buzzelli Perpetual Trophy' will be awarded.

19.3. Other prizes may be awarded.

20. DISCLAIMER OF LIABILITY

Competitors participate in the regatta entirely at their own risk. See RRS 4, Decision to Race. The organizing authority will not accept any liability for material damage or personal injury or death sustained in conjunction with or prior to, during, or after the regatta.

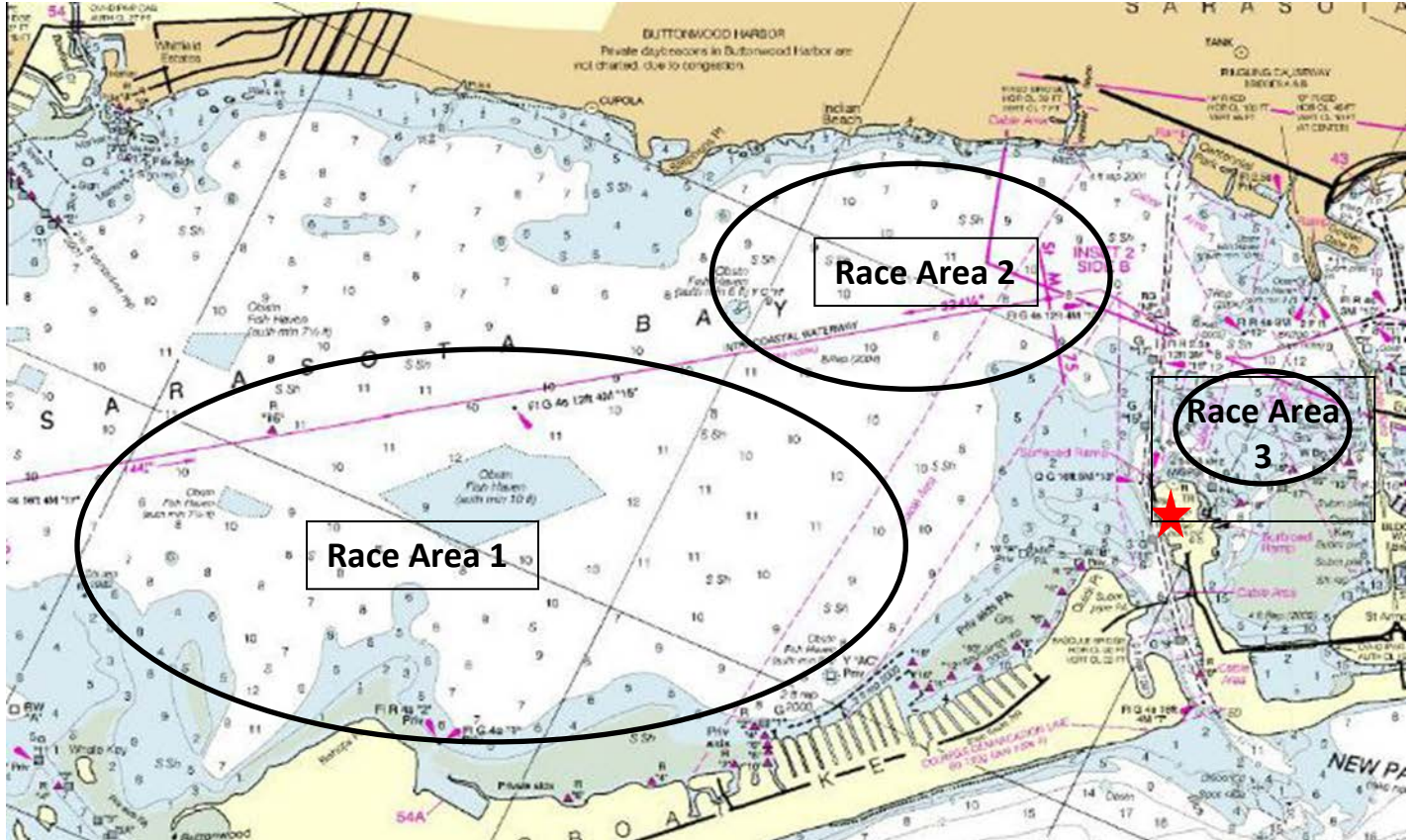
21. INSURANCE

Each participating boat shall be insured with valid third-party liability insurance.

October 20 – 22, 2017

The organizing authority: Sarasota Sailing Squadron

Attachment I – Sailing Areas, Mark Description, Class Flags



Course	VHF	Mark Descriptions	Class Flags
Gulf Long Distance Friday	69	For Gulf Long Distance Race -See Attachment II Start, finish mark – Yellow cylinder	Stiletto – Numeral pennant 1 PHRF High Multihull – Numeral pennant 2 PHRF Low Multihull – Numeral pennant 3
Race Area 1 Stiletto Multi Hull	69	Course marks - Orange tetrahedrons Offset mark –red ball Start, finish marks – Yellow cylinder Change Mark – Yellow tetrahedron	Stiletto – Numeral pennant 1 PHRF High Multihull – Numeral pennant 2 PHRF Low Multihull – Numeral pennant 3
Race Area 2* Portsmouth Weta Hobie 16	71	Course marks - Yellow tetrahedrons Offset mark –red ball Start, finish marks – Yellow cylinder Change Mark – Green tetrahedron	Portsmouth – Numeral pennant 4 Weta - Numeral pennant 5 Hobie 16 - Numeral pennant 6
Race Area 3 Windrider	72	Course marks - Orange tetrahedrons Start, finish marks – small ball mark	Windrider – Numeral pennant 7



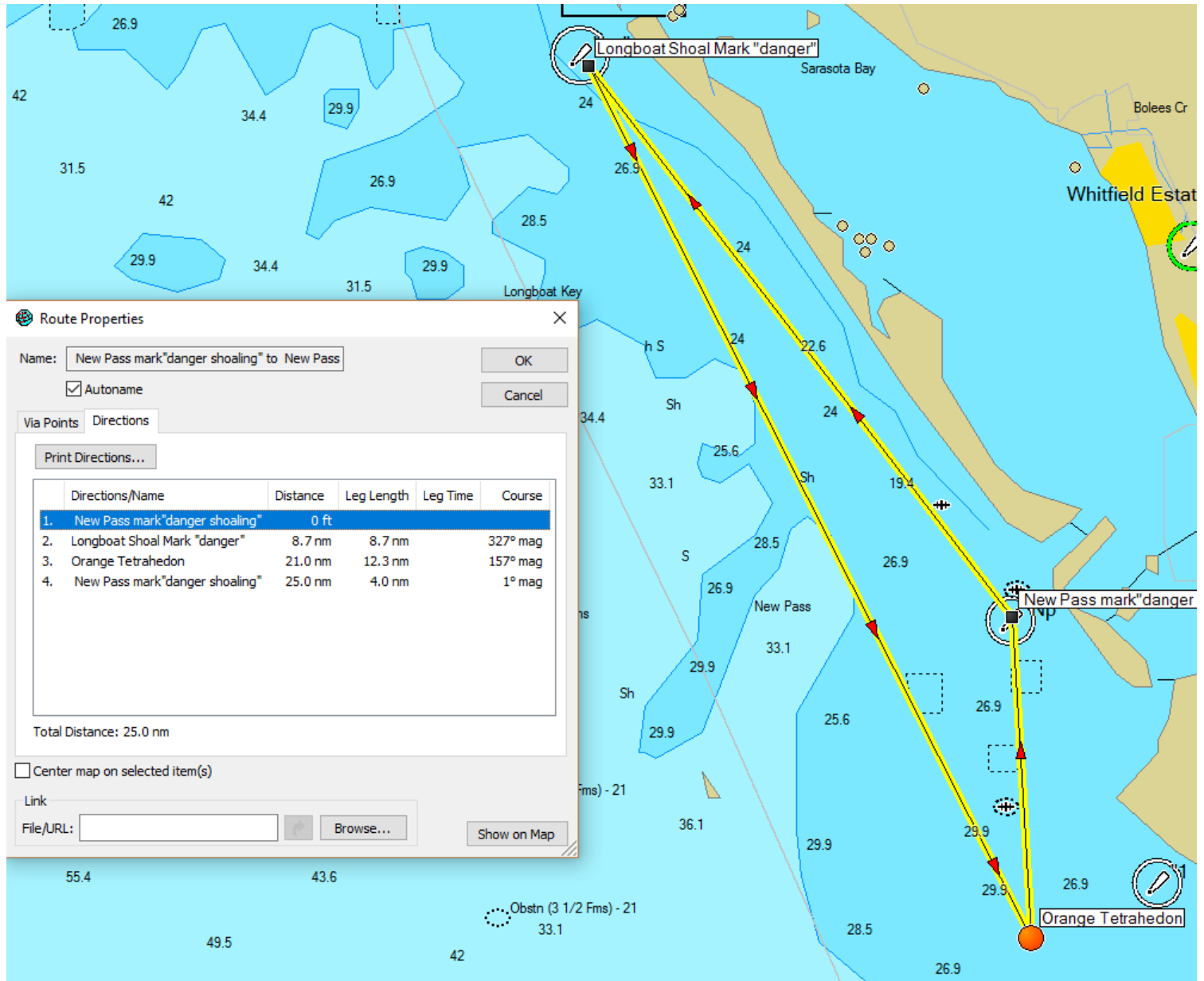
11th Buzzelli Multihull Rendezvous with 38th Stiletto Nationals Sailing Instructions

October 20 – 22, 2017

The organizing authority: Sarasota Sailing Squadron



Attachment II – Gulf Long Distance Race Marks. Description and Approximate GPS Waypoints



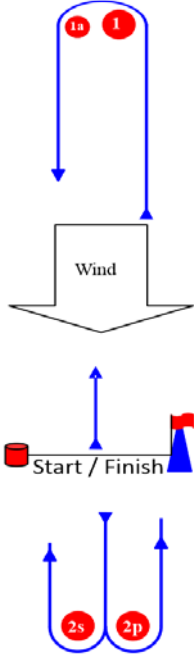
New Pass Mark	N27 18.920	W082 35.886	Mark on pile, words Danger Shoaling on sign
Longboat Pass Mark	N27 25.847	W082 41.846	Mark on pile, words Danger on sign
Orange Tetrahedron	N27 14.890	W082 35.598	Floating inflatable mark

October 20 – 22, 2017

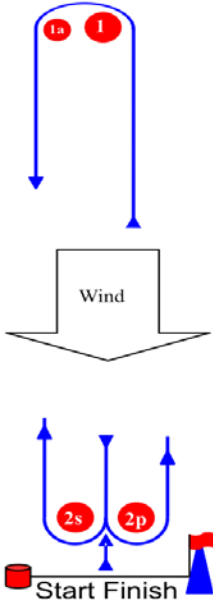
The organizing authority: Sarasota Sailing Squadron

Attachment III – Course Illustrations

COURSE M

	Windward leeward with offset, gate and mid start line	
	Possible courses	
	Classes	Mark Rounding Order
	M1	Start-1-1a-2s/2p-Finish
	M2	Start-1-1a-2s/2p-1-1a-2s/2p-Finish
M3	Start-1-1a-2s/2p-1-1a-2s/2p-1-1a-2s/2p-Finish	
<p>In the event of the next leg change of the course, mark 1a will not be relocated. All classes shall round the new mark 1 leaving it to port.</p>		

COURSE W

Course	Description	
	Windward/Leeward offset mark 1a with Downwind finish	
	Possible courses	
	Signal	Mark Rounding Order
	W1	Start-1-1a-Finish
	W2	Start-1-1a-2s/2p-1-1a-Finish
W3	Start-1-1a-2s/2p-1-1a-2s/2p-1-1a-Finish	
<p>In the event of the next leg change of the course, mark 1a will not be relocated. All classes shall round the new mark 1 leaving it to port.</p>		



11th Buzzelli Multihull Rendezvous
with 38th Stiletto Nationals
Sailing Instructions

October 20 – 22, 2017

The organizing authority: Sarasota Sailing Squadron



COURSE T (Windrider only)

