



USA JUNIOR OLYMPIC SAILING FESTIVAL

NORTHEAST NEW ENGLAND

Centerboard Yacht Club

Portland Yacht Club

SailMaine

South Portland, Maine

Northeast Sailing Association

July 10, 11, 12

National JO Sponsors: Gill, Sperry,
New England Ropes, KO Sailing & Zim



SAILING INSTRUCTIONS

1. RULES

- 1.1 The regatta will be governed by *rules* as defined by the Racing Rules of Sailing (RRS).

2. ENTRIES

Boats that have completed registration are eligible to race.

3. SAFETY

- 3.1 A Coast Guard-approved PFD must be worn and fully secured at all times while afloat, except for brief periods while adding or removing clothing. Whistles permanently attached to the PFDs are recommended. This changes rule 40.
- 3.2 A boat retiring from a race shall notify a race committee boat before leaving the course, or, when that is impossible, the Regatta Office immediately after arrival ashore.

4. CHECK-IN

Competitors shall check in with the Race Committee Signal Boat before the initial warning signal of the first race each day.

5. NOTICES TO COMPETITORS

Notices to competitors will be posted on the Official Notice Board(s) located in the Regatta HQ tent.

6. CHANGES IN SAILING INSTRUCTIONS

Any change to the SIs will be posted before **20 minutes prior to the harbor start** on the day it will take effect, except that any change to the schedule of races will be posted by **1700 (5:00 PM)** on the day before it will take effect.

7 SIGNALS MADE ASHORE

- 7.1 Signals made ashore will be displayed at **Regatta Headquarters**.
- 7.2 Flag AP with two **horns** (one **horn** when lowered) means, "The race is postponed. The initial Warning Signal will be made not less than **40** minutes after AP is lowered." This changes Race Signal AP.

8 SPECIAL SIGNALS

Code Flag A (White and Blue vertical stripes) displayed with no sound while boats are finishing means "no more racing today."

9 SCHEDULE OF RACES

Races are scheduled as follows:

Tuesday, July 11th: Race Day #1

- 8:00 – 10:00 Check-in/breakfast for competitors @ HQ Tent
Ongoing: Safety Inspections for Optimist Fleets.
420/Laser Fleets will receive random checks.
- 9:00 Coaches/ Support Boat Meeting @ HQ Tent
- 10:00 Skippers Meeting @ Bug Light Park
- 11:00 Harbor Start 420s, Lasers, and RWB Optimist Fleets
- 11:30 Harbor Start Green Fleet Optimist
- 12:00 Initiation of Starting Sequence, First race.
No race will start after 1600 (4:00PM)
- 18:00 Pizza Dinner

Wednesday, July 20th: Race Day #2

- 8:00 – 9:30 Breakfast @ HQ Tent
- 9:00 Coaches Meeting @ HQ Tent
- 9:30 Harbor Start 420's, Lasers, and RWB Optimist Fleets
- 10:00 Skippers Meeting Green Fleet @ Bug Light Park
- 11:00 Initiation of Starting Sequence, First race of the day.
- 14:30 No race will start after 14:30 (2:30 PM)

Awards will take place as soon as possible after the last boat is ashore under the HQ tent.

- 9.1 No initial Warning Signal will be made after **1430 (2:30 PM)** on the last day of racing.
- 9.2 The distance from the launch site to the racing area is approximately 1.7 nautical miles for the Opti Championship, 420, and Laser fleets and 600 yards for the Optimist Green Fleet.
- 9.3 Should conditions make it impossible to complete the scheduled number of races, the regatta shall be terminated and the results based on the races completed and scored; in any event, when **5** or more races are completed a boat's worse score will be dropped. This changes A2.

10 CLASS FLAGS

Class flags will be:

Class Optimist Red/White/Blue Flag Class Flag

Class Laser/Laser Radial Flag Class Flag

Class 420 Flag Class Flag

11 RACING AREA

The racing area will be as shown in Illustration A, attached.

12 THE COURSE

12.1 The diagram(s) in Illustration B show the course(s), the order of rounding, and the side on which each mark is to be rounded or passed. Opti Green Fleet will have courses described by their PRO at their skipper's meeting.

12.2 The course will be displayed from the Race Committee Signal Boat.

13 MARKS

Marks of the course will be *[insert description]*. New (change) marks, will be *[insert description]*. The starting and finishing marks will be *[insert description]*.

14 THE START

14.1 Races for all classes **except for Optimist Green Fleet** will be started in accordance with rule 26.

14.2 Appendix U – Sound-Signal Starting system will be used for Opti Green Fleet. This changes RRS 26.

14.3 The starting line will be between the staff from which an orange flag is displayed on the Race Committee Signal Boat at the starboard end of the line (looking upwind) and the course side of the port-end starting mark.

14.4 Boats whose Warning Signal has not been made shall keep clear of the starting area.

14.5 A boat shall not start later than **3** minutes after her starting signal. A boat starting later than **3** minutes after her starting signal shall be scored Did Not Start (DNS) without a hearing. This changes rules 63.1, A4.1 and A5.

15 RECALLS

The Race Committee intends to hail OCS boats after the starting signal. The failure to make or receive such communication shall not be grounds for redress. This changes rules 41 and 62.1 (a).

16 THE FINISH

The finishing line will be between a staff displaying an orange flag or shape on a Race Committee boat and the course side of a nearby finish mark unless the finish is for a shortened course. See RRS 32.2.

17 PENALTY SYSTEM

The following sections of Appendix V shall apply:

V1 PENALTY AT THE TIME OF AN INCIDENT

The first two sentences of rule 44.1 are changed to: 'A boat may take a One-Turn Penalty when she may have broken one or more rules of Part 2 or rule 31 in an incident while racing. However, when she may have broken one or more rules of Part 2 while in the zone around a mark other than a starting mark, her penalty shall be a Two-Turns Penalty.

18 TIME LIMIT

Boats failing to finish within **20** minutes after the first boat sails the course and finishes will be scored Did Not Finish (DNF) without a hearing. This changes rules 35, 63.1, A4.1, and A5.

19 PROTESTS

- 19.1 Protests shall be in writing and delivered to the regatta office within **45** minutes after the time of the docking of the race committee signal boat for that competitor's course.
- 19.2 Protests will be heard in approximately the order of receipt as soon as practicable.
- 19.3 Protest notices will be posted within **15** minutes of the protest time limit to inform competitors where and when there is a hearing in which they are parties to a hearing or named as witnesses. This posting shall constitute the notification required by RRS 61.1(b) and RRS 63.2.
- 19.4 The following sentence is added to rule 66. "On the last day of racing, a party to the hearing may ask for a reopening no later than one hour after being informed of the decision." This changes rule 66.
- 19.5 Infringements of SIs 3, 4, and 22 are not protestable by another boat. This changes rule 60.1(a).
- 19.6 The penalty, if any, for an infringement of a rule other than a rule of Part 2 will be at the discretion of the Protest Committee and may be less than disqualification.

20 SCORING

The Low-Point Scoring System of Appendix A shall apply for all classes. As many races as possible are scheduled, of which **one** shall be completed to constitute a series. If **five** or more races are sailed, a boat's worst score shall be discarded. This changes RRS A2.1.

21 SUPPORT BOATS

- 21.1 Except as noted in 21.2, team leaders, coaches and other support personnel shall not be in the racing area from the time of the preparatory signal for the first class to start until all boats have finished or the Race Committee signals a postponement, general recall or abandonment. Support persons who violate this instruction may be subject to penalty under RRS 64.4.
- 21.2 Optimist Green Fleet: Coaching is encouraged during the starting sequence, around marks, and for staying generally “on course.” Green Fleet support boats must identify themselves to the Race Committee and be careful not to interfere with any racing boats. Safety is paramount.
- 21.3 Coaches must wear fully secured PFDs while on the water. Other support people – Race Committee, mark and safety boat operators, parents, etc. – are strongly encouraged to wear fully secured PFDs while on the water.
- 21.4 All coach boats and other support boats/support personnel must agree to aid any competitor in distress or requesting assistance of any sort.

22 PRIZES

Junior Olympic medals will be awarded to each member of the crew placing first, second and third in each division.

Attachments: Illustration A - The Racing Area
 Illustration B - Course Diagrams

Illustration A – The Racing Area

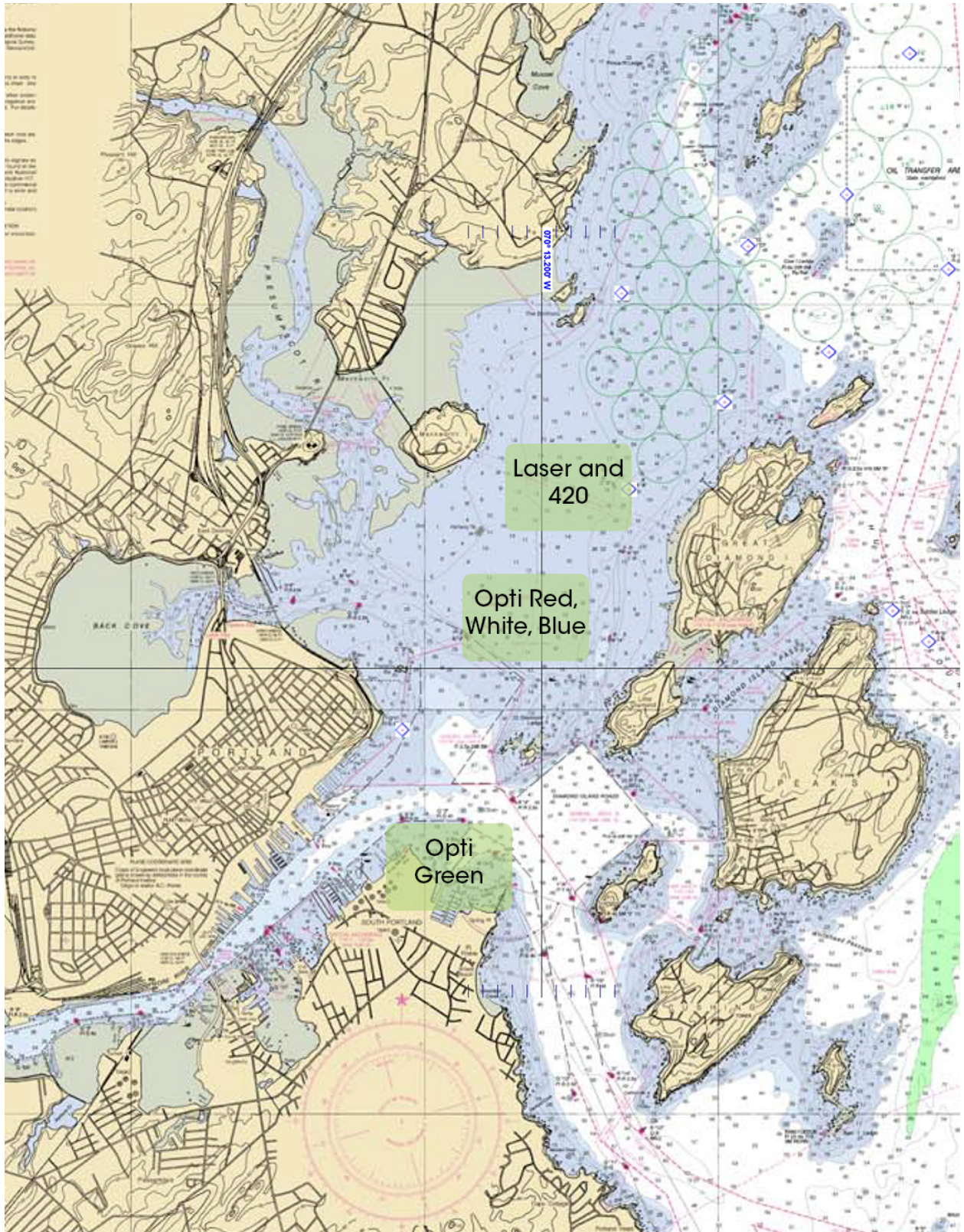


Illustration B: Course Diagrams

