

SAILING INSTRUCTIONS

SAYRA REGATTA

August 5th and 6th 2017

1. Rules

- 1.1. The regatta will be governed by the rules as defined in *The Racing Rules of Sailing*.
- 1.2. Appendix V1 and V2 are in effect.
- 1.3. The USS Prescriptions to RRS 63.2 and 63.4 are deleted.

2. Notices to Competitors

Notices to competitors will be posted on the official notice board located outside of the Carolina Yacht Club office.

3. Changes to Sailing Instructions

- 3.1. Any changes that apply to Saturday will be announced at the Competitors Meeting and posted within 15 minutes of the completion of the Competitors Meeting.
- 3.2. Any changes that apply to Sunday will be posted before 0900 on Sunday, except that any change to the written schedule of races will be posted by 1800 Saturday.
- 3.3. Oral changes to the Sailing Instructions may be given on the water by hail from the Signal Boat under code flag "L" in accordance with RRS 90.2 (c). Changes communicated must be made before the warning signal for the affected class/classes.

4. Signals Made Ashore

- 4.1. Signals made ashore will be displayed from the flagpole at the sound side gazebo.
- 4.2. Any signals flown ashore over "S" are relative only to the sound fleets.

4.2.1. When flag “AP” over “S” is displayed ashore, ‘1 minute’ in race signal “AP” is replaced with ‘not less than 30 minutes’.

4.3. Any signals flown ashore over “O” are relative only to the ocean fleets.

4.3.1. When flag “AP” over “O” is displayed ashore, ‘1 minute’ in race signal “AP” is replaced with ‘not less than 60 minutes’.

4.3.2. When flag "C" over “O” is flown ashore, some or all ocean fleets will sail in the sound. Courses to be sailed in the Sound will be posted on the Notice Board.

5. Schedule of Races

5.1. Saturday, August 5

- 0800-0930 Registration
- 1100 Competitors Meeting
- 1230 First Warning, races to follow

5.2. Sunday, August 6

1130 First Warning, races to follow

5.3. No warning signal will be signaled after 1400 on Sunday.

5.4. An unlimited number of races are scheduled.

6. Class Flags

Class flags to be used for each class will be posted at the end of registration on the official notice board located outside of the Carolina Yacht Club office and will be announced at the Competitors Meeting.

7. Racing Areas

Attachment A shows the location of the racing areas.

8. The Course

- 8.1 The course diagrams in attachments “B”, “C” and “D” show the Ocean Courses, the order in which marks are to be passed and the side on which each mark is to be rounded.
- 8.2 The Race Committee for the Main Ocean Course will display the approximate compass bearing of the first leg.
- 8.3 Ocean Courses may be sailed in the Sound due to weather conditions. The Main Ocean fleets may also sail course “C1” or “C2” (Attachment “E”) when moved into the sound. Courses for the Youth Course will remain the same.

9. Marks

9.1 Main Ocean Course

- 9.1.a Marks 1, 2(s), and 2(p) will be yellow tetrahedrons.
- 9.1.b Offset Mark will be a small orange sphere.
- 9.1.c Mark 1 A (Sunfish / 4.7 windward mark) will be a green tetrahedron.
- 9.1.d Offset Mark 1B (Sunfish / 4.7) will be a small orange sphere.
- 9.1.e Change marks will be 5' orange tomatoes except a change mark for 1A (Sunfish / 4.7 windward mark) will be a yellow tetrahedron with a black band. In a subsequent change a new mark will be replaced by an original mark.
- 9.1.f Starting marks will be Race Committee and Pin Boat displaying orange flag.
- 9.1.g Finish marks will be a white sphere.

9.2 Youth Course

- 9.2.a Mark 1A will be an orange tetrahedron.
- 9.2.b Marks 1B, 2 and 3 will be yellow tetrahedrons.
- 9.2.c Start/Finish Mark will be a white sphere.

9.3 On all courses the Signal Boat is a Mark.

9.4 A race committee vessel signaling a change of a leg of the course is a mark as provided in SI 12.2.

10. The Start

10.1 Main Ocean Course

10.1.a Races will be started using Rule 26.

10.1.b The starting line will be between an orange flag displayed on the Race Committee Signal boat at the starboard end and an orange flag displayed on the Race Committee Pin Boat at the port end.

10.2 Youth Course

10.2.a Races will be started per Appendix U – Audible-Signal Racing System.

10.2.b The starting line will be between an orange flag displayed on the Race Committee Signal boat at the starboard end and the starting mark at the port end.

10.3 A boat starting later than 4 minutes after her starting signal will be scored Did Not Start without a hearing. This addition is made to the definition of *START* by adding it as the last sentence to the current definition of *START*.

10.4 Boats whose warning signal has not been made shall avoid the starting area.

10.5 For the purpose of OCS, the race committee may attempt to hail her sail number. Failure to hail promptly or accurately or failure of the boat to hear the hail shall not be grounds for redress. This sentence is added to RRS 62.1(a)

11. The Finish

11.1 Main Ocean Course: The finish line will be between the orange staff on the finish boat and the nearby Finish Mark.

11.2 Youth Course: The finish line will be between the orange flag on the Race Committee Signal boat and the Start/Finish Mark.

11.3 On the youth course, a boat(s) that has not finished may be scored in place to allow additional race(s) to Start.

12. Change of the Next Leg of the Course

- 12.1 To change the next leg of the course, the race committee will lay a new mark (or move the finishing line) and remove the original mark as soon as practical. When in a subsequent change a new mark is replaced, it will be replaced by an original mark.
- 12.2 Except at a gate, boats shall pass between the race committee boat signaling the change of the next leg and the nearby rounding mark, leaving the mark to port and the race committee boat to starboard. This change is added to RRS Rule 28.
- 12.3 On the Ocean Course, there will be no offset mark accompanying a change mark.

13. Penalty System

- 13.1 PENALTIES AT THE TIME OF THE INCIDENT (RRS V1) - The first two sentences of rule 44.1 are changed to: “A boat may take a one turn penalty when she may have broken a rule of Part 2 or rule 31 while racing. However, when she may have broken a rule of Part 2 while in the zone around a mark other than a starting mark her penalty shall be a two-turns penalty”.
- 13.2 PENALTIES TAKEN AFTER A RACE (RRS-V2) - After a race a boat that may have broken a rule of part two or RRS 31 while racing may take a Post-Race penalty for that incident. A boat takes the penalty by delivering a written notice to the Race Office that identifies the race number and when and where the incident occurred. The Post-Race penalty shall be a 30% Scoring Penalty, calculated as stated in rule 44.3(c). However, rules 44.1(a) and (b) apply, and the penalty shall not be taken after the protest hearing involving the incident has begun.
- 13.3 For the Lightning class, when an infringing boat has its spinnaker drawing at the time of the incident, she shall lower her spinnaker head of the sail below the boom gooseneck, take a One-Turn Penalty, then reset her spinnaker and have it drawing after the penalty. This is added to the end of rule V1.

14. Time Limits – Main Ocean Course

- 14.1 The time limit shall be 90 minutes.
- 14.2 Boats failing to finish within 15 minutes after the first boat sails the course and finishes will be scored TLE without a hearing. This change is an addition to RRS A11.

15. Protests and Requests for Redress

- 15.1. Protests forms and Post Race Penalties forms are available at the club office. Protests shall be delivered there within the protest time limit.
- 15.2. Protest time for each course will begin when the Race Committee signal boat for that course docks and makes one sound signal and ends 30 minutes later.
- 15.3. The time of docking of each Race Committee signal boat will be posted on the official notice board as soon as practical after docking.
- 15.4. The hearing schedule will be posted on the official notice board within 30 minutes of the protest time limit to inform competitors of hearings schedule.
- 15.5. Hearings will be held in the club office.
- 15.6. Notices of protest by the Race Committee or protest committee will be posted on the official notice board to inform boats under rule 61.1(b).

16 Scoring

- 16.1. One race is required to be completed to constitute a regatta.
- 16.2. When fewer than six races have been completed, a boat's series score will be the total of her race scores.
- 16.3. When six or more races have been completed, a boat's series score will be the total of her race scores excluding her worst score.
- 16.4. On the Main course, Boats scored TLE (Time Limit Expired) will receive two more places than the last boat to finish in her class. This sentence is added to RRS A4.2 and A5.

17 Safety

- 17.1. All competitors sailing to the ocean courses need to be mindful of currents and sea state at the mouth of the inlet and should wear life jackets while transiting to and from the sailing area.
- 17.2. Competitors in the following classes shall wear a PFD from the time they leave the dock until they return, except briefly while changing or adjusting clothing or personal equipment: Laser, Sunfish, Optimist, Open BIC, and 420. Other classes shall be governed by RRS 40.
- 17.3. Prior to the preparatory signal for the first race each day, each boat is required to check in by sailing near the stern of the signal boat on starboard tack, hailing her sail number and receiving a clear sign of acknowledgment from the race committee.

- 17.4 In order to account for all competitors, a boat that retires or withdraws from a race shall notify any race committee boat (Signal, Mark, or Safety) before leaving the course area. Else, a boat may notify their course's signal boat via contact from the Dock Master or Club office after arriving ashore.
- 17.5 Rules identified in Section 12 Safety of the NOR will apply.
- 17.6 Only the Race Committee for the Boat's Course shall protest a boat for rules listed in SI Section 17. This is an addition to RRS 60.2.

18 Trash Disposal

Trash may be placed aboard support or official boats.

19 Radio Communication

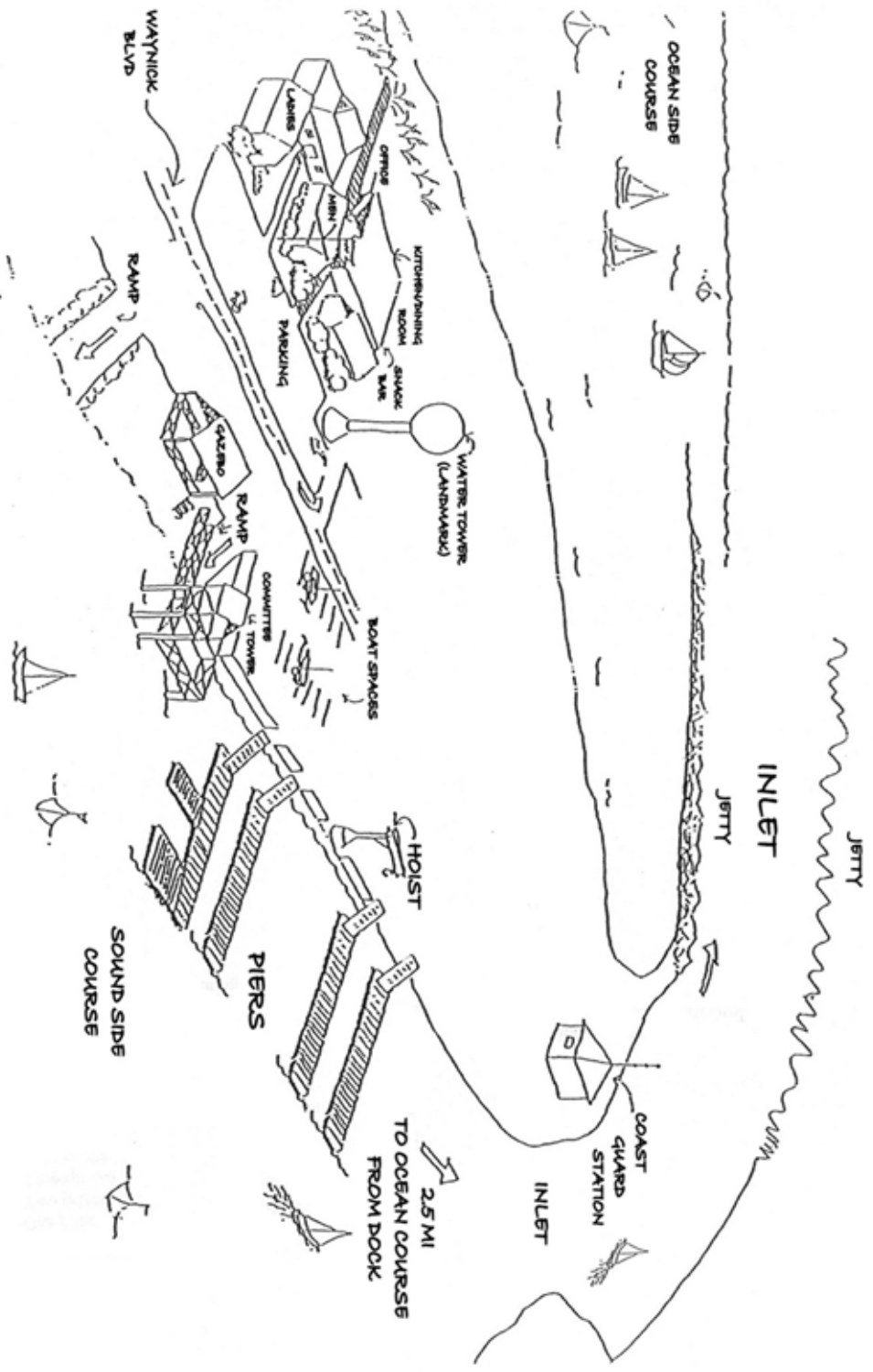
- 19.1 Radios are only to be used for emergency use only. This restriction also applies to mobile phones and other forms of electronic communication.
- 19.2 The Main Ocean Course Race Committee will use VHF Channel 80A for the purpose of communicating with the Lightning class. This is a change from channel 79A mentioned in the NOR.

20. Disclaimer of Liability

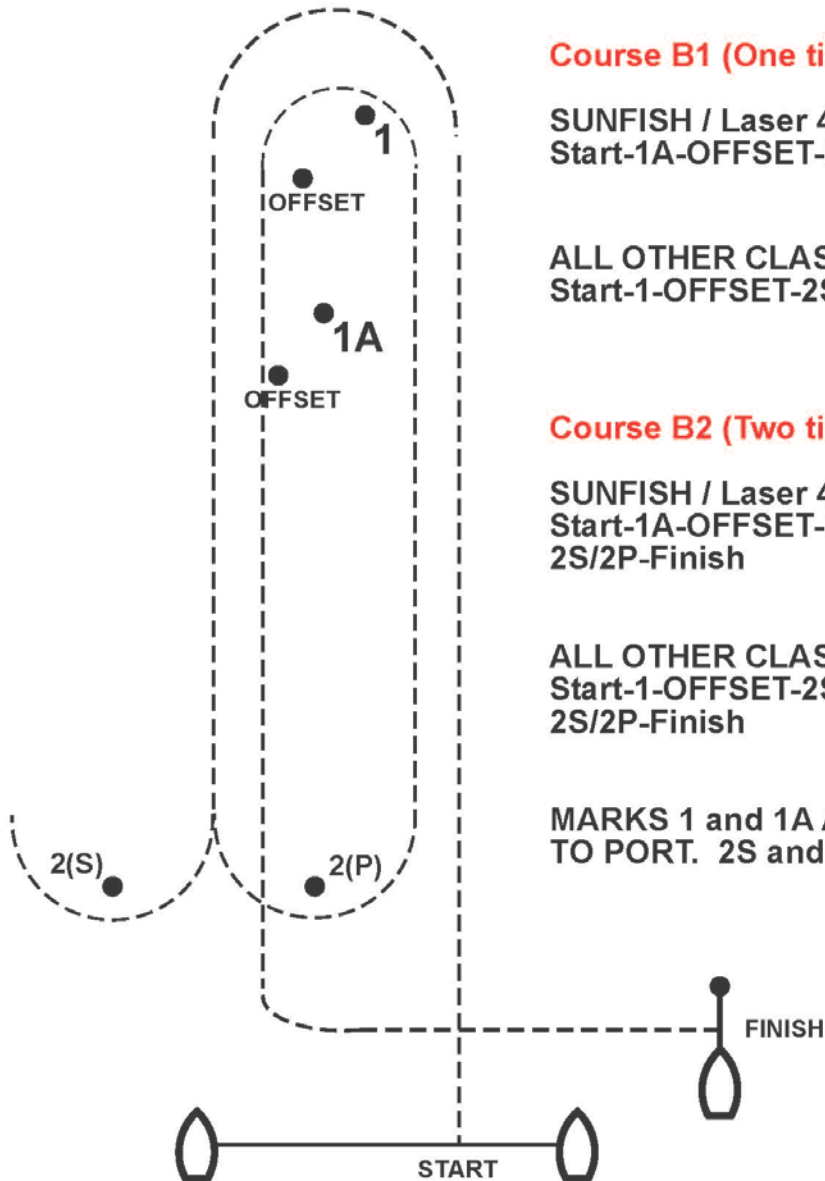
Competitors participate in the regatta entirely at their own risk. See rule 4, Decision to Race. The organizing authority will not accept any liability for material damage or personal injury or death sustained in conjunction with or prior to, during or after the regatta.

ATTACHMENT A

*Carolina Yacht Club
& Race Courses*



Attachment B Ocean Dinghy Course Diagram



Course B1 (One time around)

SUNFISH / Laser 4.7
Start-1A-OFFSET-2S/2P-Finish

ALL OTHER CLASSES
Start-1-OFFSET-2S/2P-Finish

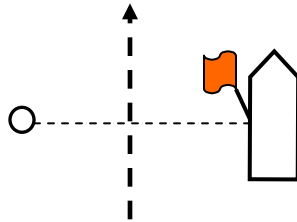
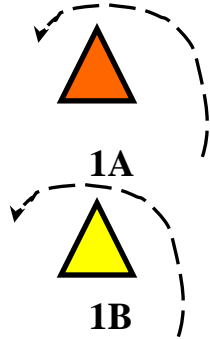
Course B2 (Two times around)

SUNFISH / Laser 4.7
Start-1A-OFFSET-2S/2P-1A-OFFSET-
2S/2P-Finish

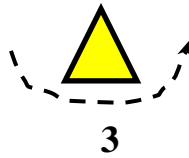
ALL OTHER CLASSES
Start-1-OFFSET-2S/2P-1-OFFSET-
2S/2P-Finish

MARKS 1 and 1A ARE TO BE LEFT
TO PORT. 2S and 2P FORM A GATE

ATTACHMENT C Youth Course Diagram



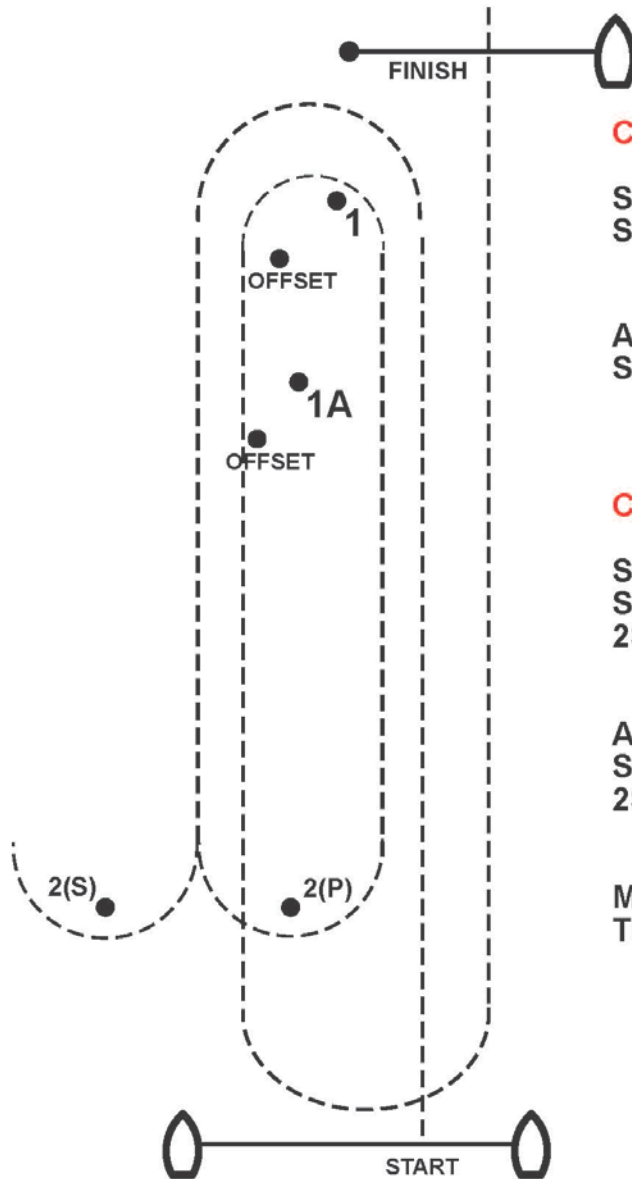
Start (S)/Finish (F)



COURSE NO.	T-Marks
TO1	S-1A-2-3-F
TO2	S-1A-2-3-1A-2-3-F
TO3	S-1A-2-3-1A-2-3-1A-2-3-F
TO4	S-1A-2-3-1A-2-3-1A-3-F
TI1	S-1B-2-3-F
TI2	S-1B-2-3-1B-2-3-F
TI3	S-1B-2-3-1B-2-3-1B-2-3-F

COURSE NO.	W-Marks
WO1	S-1A-3-F
WO2	S-1A-3-1A-3-F
WO3	S-1A-3-1A-3-1A-3-F
WI1	S-1B-3-F
WI2	S-1B-3-1B-3-F
WI3	S-1B-3-1B-3-1B-3-F

Attachment D Ocean Alternate Course W



Course W1 (One time around)

SUNFISH / Laser 4.7
Start-1A-OFFSET-2S/2P-Finish

ALL OTHER CLASSES
Start-1-OFFSET-2S/2P-Finish

Course W2 (Two times around)

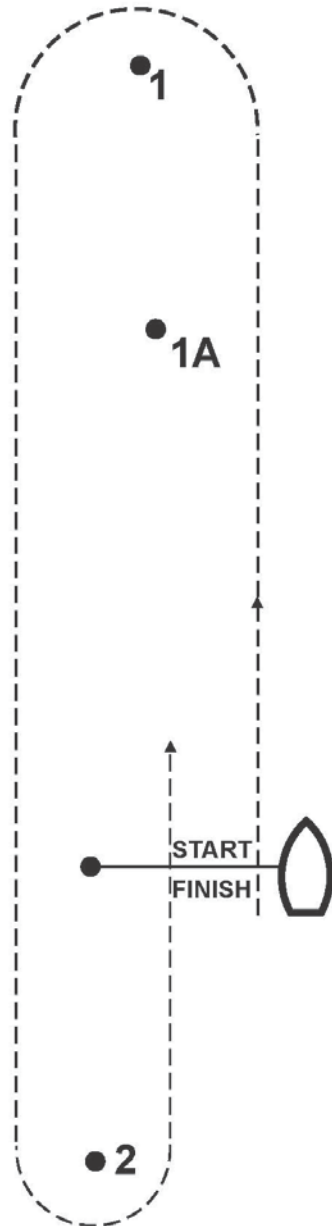
SUNFISH / Laser 4.7
Start-1A-OFFSET-2S/2P-1A-OFFSET-
2S/2P-Finish

ALL OTHER CLASSES
Start-1-OFFSET-2S/2P-1-OFFSET-
2S/2P-Finish

MARKS 1 and 1A ARE TO BE LEFT
TO PORT. 2S and 2P FORM A GATE

Attachment E

Sound Race Course Diagram



Course C1 (One time around)

OPTIMIST
Start - 1A - 2 - Finish

ALL OTHER CLASSES
Start - 1 - 2 - Finish

Course C2 (Two times around)

OPTIMIST
Start - 1A - 2 - 1A - 2 - Finish

ALL OTHER CLASSES
Start - 1 - 2 - 1 - 2 - Finish

ALL ROUNDING MARKS ARE TO BE
LEFT TO PORT