

**61<sup>st</sup> Annual North Carolina Governor's Cup  
Carolina Sailing Club  
June 15-17, 2018**

**Sailing Instructions**

*The notation '[DP]' in a rule in the Sailing Instructions means that the penalty for a breach of that rule may, at the discretion of the protest committee, be less than disqualification.*

**1. RULES**

- 1.1 The regatta will be governed by the rules as defined in The Racing Rules of Sailing (RRS).
- 1.2 If there is conflict between the Notice of Race and the Sailing Instructions, the Sailing Instructions shall prevail. This changes RRS 63.7.

**2. NOTICES TO COMPETITORS**

Notices to Competitors will be posted on the Official Notice Board located outside, on the north side of the Glass House.

**3. CHANGES TO THE SAILING INSTRUCTIONS**

- 3.1 Changes to the Sailing Instructions applying to Saturday will be announced at the Competitors' meeting and subsequently posted on the Official Notice Board not later than 60 minutes prior to the first warning of the day.
- 3.2 Changes applying to Sunday will be posted by 0900 Sunday, except for changes to the schedule which will be posted by 1800 on Saturday.
- 3.3 Oral changes to the Sailing Instructions may be made on the water. Race Signal L will be displayed and all boats shall come within hail. Notification of the change will be given to, and acknowledgement received from each boat.

**4. SIGNALS MADE ASHORE**

- 4.1 Signals made ashore will be displayed from the flagpole at the Glass House.
- 4.2 When signal flag AP is displayed ashore, "1 minute" is replaced with "not less than 30 minutes" in the race signal AP.

**5. SCHEDULE OF RACES**

- 5.1 The Competitors' meeting will be held Saturday, 1100, at the Glass House.
- 5.2 Five races are scheduled. Any number of races may be sailed each day.
- 5.3 The warning signal for the first race each day is shown in the table below:

Saturday June 16	1st Warning for Race #1 Subsequent races to follow.	1230
Sunday June 17	1 <sup>st</sup> Warning for 1 <sup>st</sup> race on Sunday Subsequent races to follow.	1000

- 5.4 On Sunday, no warning signal will be made after 1230.
- 5.5 Flag A displayed, with no sound, while boats are finishing means "No more racing today."

## 6. CLASS FLAGS

6.1 The class flags are as follows:

420	Numeral Pennant 1 (White/Red Ball) or Flag with 420 logo
Buccaneer	Numeral Pennant 2 (Blue/White Ball) or Flag with Buccaneer logo
Flying Scot	Numeral Pennant 3 (Red/White/Blue) or Flag with Flying Scot logo
Isotope	Numeral Pennant 4 (Red/White Cross) or Flag with Isotope logo
Jet 14	Numeral Pennant 5 (Yellow/Blue) or Flag with Jet 14 logo
Laser	Numeral Pennant 6 (Black/White) or Flag with Laser logo
Thistle	Numeral Pennant 7 (Yellow/Red) or Flag with Thistle logo
Tanzer 16	Numeral Pennant 8 (White/Red Cross) or Flag with Tanzer 16 logo
RS Aero	Numeral Pennant 9 (White/Black/Red/Yellow) or Flag with RS Aero logo
Wayfarer	Numeral Pennant 0 (Yellow/Red/Yellow) or Flag with Wayfarer logo
Open Monohull	Blue Flag
Open Multihull	Red Flag

6.2 The order of class starts is at the discretion of the Principal Race Officer (PRO). Class starts may be combined.

6.3 The class flags utilized will be posted on the Official Notice Board before the Competitors' meeting and announced at the Competitors' meeting.

## 7. RACING AREA

The racing area is off Henderson Point, Kerr Lake.

## 8. THE COURSE

8.1 The diagram in Attachment A shows the courses. The course length will be based on the sailing conditions.

8.2 No later than the warning signal, the Race Committee signal boat will display the course.

## 9. MARKS

9.1 Marks 1 (windward mark) and 2a (monohull leeward mark) are orange cylinders.

9.2 Mark 2b (multihull leeward mark) is an orange tomato.

9.3 Mark 1a (windward offset) is a small yellow mark (tetrahedron or sphere).

9.3 A new mark, as provided in Sailing Instruction 11, will be a yellow cylinder.

9.4 The starting and finishing marks are described in paragraphs 10.1 and 12.

## 10. THE START

10.1 The starting line will be between a gallows or staff displaying the North Carolina State flag on the Race Committee signal boat at the starboard end of the line and at the course side of a pin mark (white sphere) at the port-end of the line.

10.2 Boats whose warning signal has not been made shall avoid the starting area during the starting sequence for other races. [DP]

10.3 A boat that does not start within 5 minutes after her starting signal will be scored Did Not Start (DNS) without a hearing. This changes RRS A4 and A5.

## 11. CHANGE OF THE NEXT LEG OF THE COURSE

To change the next leg of the course, Race Committee will lay a new mark and remove the original mark as soon as practicable. When in a subsequent change of course a new mark is replaced, it will be replaced with the original mark. There will be no offset mark for new or subsequent marks.

## **12. THE FINISH**

The finishing line will be between a gallows or staff displaying the North Carolina State flag on the Race Committee finish boat at the port (windward) end of the line and the course side of the starboard (leeward) end finishing mark, which will be a pink sphere.

## **13. PENALTY SYSTEM**

For multihull classes, a boat may take a One-Turn Penalty when she may have broken a rule of Part 2 or Rule 31 while racing. This changes Rule 44.1. For monohull classes, a boat may take a One-turn penalty when she may have broken a rule of Part 2 or Rule 31 while racing. However, when she may have broken a rule of Part 2 while in the zone around a mark other than a starting mark, her penalty shall be a Two-Turns Penalty. This changes RRS 44.1.

## **14. TIME LIMITS**

14.1 If no boat in a class has rounded the windward mark 30 minutes after the starting signal, that class's race is abandoned.

14.2 The time limit for the first boat of a class to sail the course and finish is 120 minutes. If no boat meets the time limit, the race will be abandoned.

14.3 Boats finishing more than 30 minutes after the first boat in her class that properly sails the course and finishes within the time limit, will be scored "Time Limit Expired" (TLE) and will be scored two places more than the last boat in her class who sailed the course properly and finished within the time limit, without a hearing. This changes rules 35, 63.1, A4, A4.2, A5 and A11.

## **15. PROTESTS AND REQUESTS FOR REDRESS**

15.1 Protest forms will be available at the Official Notice Board.

15.2 For each class, the protest time limit is 30 minutes after the Race Committee signal boat docks and sounds a horn signal following the last race of the day. This changes RRS 62.2.

15.3 The protest time limit will be posted on the Official Notice Board.

15.4 Protests will be collected by a Jury Representative at the Official Notice Board.

15.5 Notices will be posted on the Official Notice Board no later than 15 minutes after the protest time limit to inform competitors of hearings in which they are parties or named as witnesses.

15.6 On the last scheduled day of racing a request for redress based on a Protest Committee decision shall be delivered no later than 30 minutes after the decision was posted. This changes RRS 62.2.

## **16. SCORING**

16.1 Classes with five (5) or more boats are scored as one-design classes. All boats in a class must be registered, paid, and checked-in at the registration desk by Saturday 1030 hours.

16.2 No scores will be excluded. This changes Rule A2.1.

16.3 Rule A8.2, first sentence, is modified to read "...in the last race in which they both competed." This changes RRS A8.2.

16.4 Open Monohull and Open Multihull classes will be scored using wind-adjusted Portsmouth Handicaps.

16.5 Race Committee personnel included in determining prizes do not count as registered boats when scoring DNC, DNS, DNF, OCS, DSQ or RET.

16.6 For determining the winner of the Governor's Cup, a skipper receives one point for each boat in his class that the skipper beats that finishes or is scored DNS, DNF, OCS RET, DSQ, or RC (awarded to current skipper-level CSC members serving on Race Committee who skipper a boat in that fleet). Race Committee members cannot count in more than one class.

16.7 One race is to be completed to constitute a regatta.

## **17. SAFETY REGULATIONS**

17.1 Prior to the first warning signal of each day, each boat shall sail by the stern of the Race Committee signal boat and hail her sail number until acknowledged by the Race Committee repeating the boat's sail number. [DP]

17.2 A boat that retires from a race or leaves the course before racing for the day is completed shall notify a Race Committee boat as soon as possible. [DP]

## **18. PRIZES**

The number of trophies awarded to a class will be based on the number of boats registered in that class plus the number of skipper-level Carolina Sailing Club members in that class serving on Race Committee as follows: (1-5) 1 trophy, (6-10) 2 trophies, (11-15) 3 trophies, (16-20) 4 trophies, (21 or more) 5 trophies.

## **19. THE GOVERNOR'S CUP**

The NC Governor's Cup is a perpetual trophy engraved with the name of the skipper having the best average score in their one-design class based on the NC Governor's Cup high-point system (SI 16.6). A keeper trophy will also be presented to the winning skipper.

## **20. OFFICIAL BOATS**

The Race Committee signal and finish boats will display a blue RC flag. The Race Committee mark boats will display a yellow RC flag.

## **21. TRASH DISPOSAL**

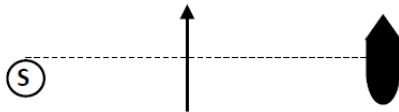
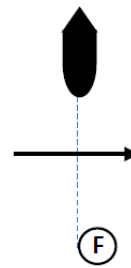
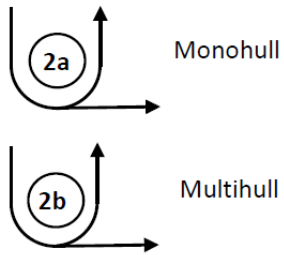
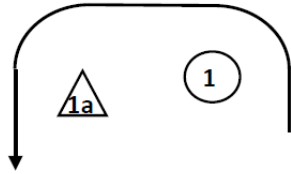
Trash may be placed aboard official boats.

## **22. DISCLAIMER OF LIABILITY**

Competitors participate in the regatta entirely at their own risk. See RRS 4, Decision to Race. The organizing authority will not accept any liability for material damage or personal injury or death sustained in conjunction with or prior to, during, or after the regatta.

# WDR

Windward Start  
Downwind Reach Finish



Course	Mark Rounding Order
WDR	S - 1 - 1a - 2a or 2b - F
WDR2	S - 1 - 1a - 2a or 2b - 1 - 1a - 2a or 2b - F

## ATTACHMENT A