

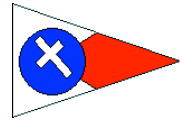
2017 Jack and Jill Regatta

September 23^r, 2017

Santa Cruz Yacht Club

Santa Cruz, CA

Sailing Instructions



1. RULES

- 1.1. This series will be governed by the rules as defined in *The Racing Rules of Sailing*.
- 1.2. The first sentence of RRS 40 is changed so that competitors shall comply with the obligations of RRS 40 (wear a PFD) whether or not the race committee displays flag Y with one sound.

2. Notice To Competitors

- 2.1. Notices to Competitors will be posted on the Official Notice Board in the northeast window of the clubhouse upper lever and may be posted on-line at the Regatta Network event site.
- 2.2. On the water the Race Committee may use VHF channel 68 for communication.

3. Changes to Sailing Instructions

Any change to these sailing instructions will be posted before 1145 on the day it will take effect, except any change to the schedule of races will be posted by 2000 on the day before it will take effect.

4. Signals Made Ashore

- 4.1. Signals made ashore will be displayed from the SCYC Clubhouse flagpole.
- 4.2. When flag AP is displayed ashore, '1 minute' is replaced with 'not less than 60 minutes' in race signals AP.

5. Schedule

- 5.1. Saturday Sept. 23, 2017 - 1100 - Competitors' meeting SCYC lower deck
- 5.2. - 1255 - Warning signal for the first race . One race scheduled.
- 5.3. - After Racing - Awards at the SCYC Clubhouse

6. Class Flags

- 6.1. PHRF Spinnaker 80 or less - F
- 6.2. PHRF Spinnaker greater than 80 - E
- 6.3. Main and Jib 181 or less - D
- 6.4. Main and Jib greater than 181 - K
- 6.5. Family 13 and Older - J
- 6.6. Family 12 and Younger - R

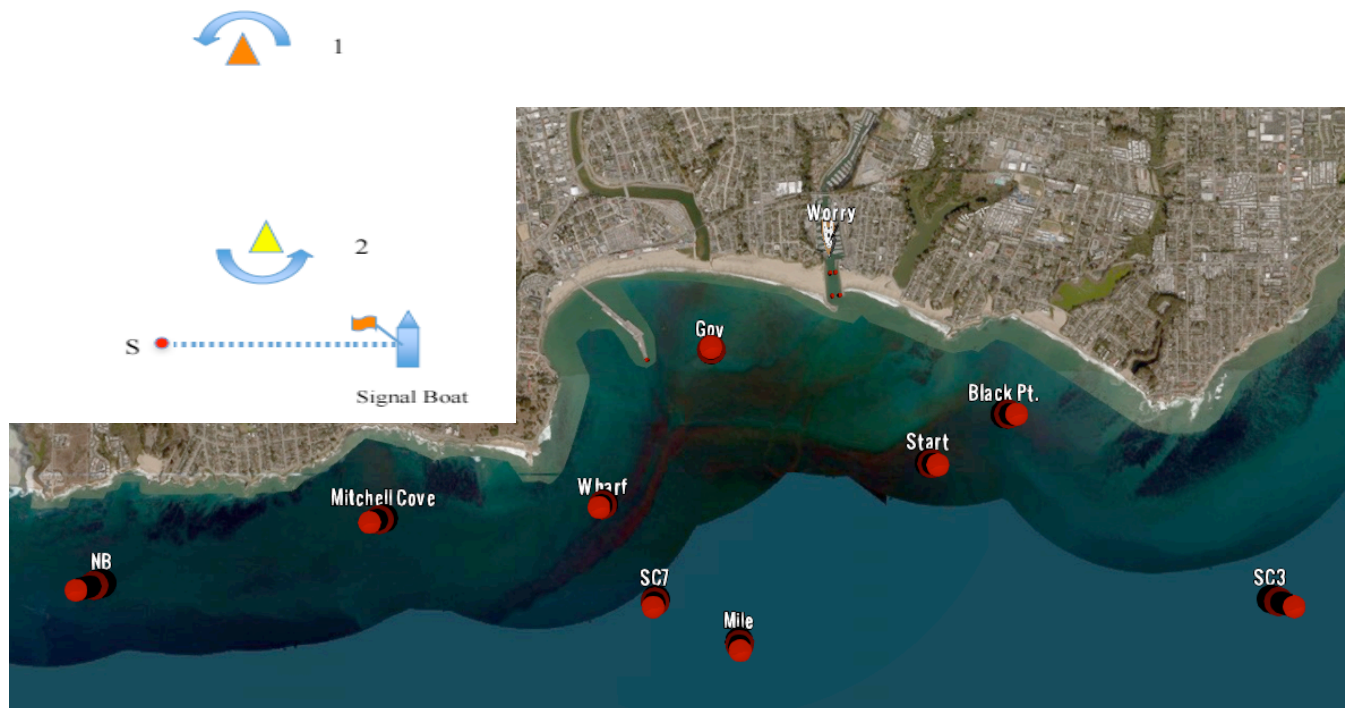
7. Racing Area

The racing area will be around temporary or inflatable or fixed marks within three miles of Walton Lighthouse at Santa Cruz Harbor.

8. Marks

- 8.1. Mark #1 is orange and Mark #2 is yellow. Both are inflatable tetrahedrons set at temporary locations.
- 8.2. Gate1 is comprised of mark “Start (S)” and mark “Signal Vessel” located in the vicinity of Start (S).
- 8.3. Others are fixed Marks and their approximate coordinates and relative postions are described below.

Mark Name	Mark Location	Mark Description
Black Pt. (BP)	36°57.22'N – 121°59.29'W	Unmarked yellow ball
Government (Gov)	36°57.47'N – 122°00.72'W	Large white metal ball marked “CG”
Mile Buoy (Mile)	36°56.35'N – 122°00.56'W	Large RW “SC” WHISTLE buoy
Mitchell Cove (MC)	36°56.80'N – 122°02.30'W	Unmarked yellow ball
ML7	36°48.90'N – 121°48.19'W	Yellow cylinder marked “ML7”
Natural Bridges (NB)	36°56.57'N – 122°03.68'W	Unmarked yellow ball
Signal Vessel	Near Mark “Start”	Race Committee signal vessel
SC3	36°56.50'N – 121°58.00'W	Yellow cylinder marked “SC3”
SC7	36°56.50'N – 122°00.99'W	Yellow cylinder marked “SC7”
Start (S)	36°57.03'N – 121°59.66'W	Unmarked yellow ball
Temporary Buoy	~550 yards SSW of mark “ML7”	Unmarked yellow buoy
Wharf	36°56.87'N – 122°01.25'W	Unmarked yellow ball



9. The Start

- 9.1. The starting line may be between an inflatable red ball and an orange flag displayed from a staff aboard the Signal Boat.
- 9.2. The starting line alternatively may be between mark “S” located at and an orange flag displayed from a staff aboard the Signal Boat. Mark “S” is a fixed yellow ball located at N36° 57.03' W121° 59.66'
- 9.3. The race committee may hail, on VHF channel 68, the sail number or other identifying feature of any boat that was on the course side of the starting line at the start signal. The failure of a hail, the failure of a boat to hear a hail, or the order of the hail(s) shall not be the ground for a boat to request redress. The changes RRS 62.1.

10. Checkout

10.1. A boat that retires from a race shall notify the race committee at the first reasonable opportunity.

11. The Finish

11.1. The finishing line will be between a temporary inflatable red ball, or mark S, depending on start locations and an orange flag displayed from a staff aboard the signal boat.

11.2. If the race committee is absent when a boat finishes, she should report her finishing time and her position in relation to nearby boats to the race committee at the first reasonable opportunity.

12. The Courses

9.1. The table below shows the courses and the order in which marks shall be passed.

9.2. Marks Orange #1, Yellow #2, and all fixed marks are left to port, with the exception of Mile Buoy in Coruse #8 which will be left to Starboard.

9.3. The course to be sailed will be indicated by the display of a number pennant flown from the staff of the signal boat.

Course	Mark Rounding Order	Length (nm)
1	Start - Orange #1 - Finish	Aprox.. 2 NM
2	Start – Orange #1 – Yellow #2 – Orange #1 - Finish	Aprox. 4 NM
3	Start - Mitchell Cove – Black Pt. - Finish	4.92
4	Start - Wharf - Black Pt. - Gate1 - Wharf – Black Pt. - Finish	6.48
5	Start – Wharf – Black Pt. - Finish	3.24
6	Start – SC3 – Gov - Finish	4.77
7	Start – Black Pt. - Wharf - Finish	3.24
8	Start – Mile (stb) – Gov – SC7 - Finish	4.3
9	Start - SC7 - Mile Buoy- Black Pt. - SC7 - Finish	5.63
10	Start - Government – SC3 - Gate1 - Government -> Finish	6.68

13. Penalty System - RRS rule 44.1 is changed so that the Two-Turns Penalty is replaced by the One-Turn Penalty.

14. Protests and Requests for Redress

14.1. Protest Forms are available at the SCYC Regatta Shed and Clubhouse. Protests and requests for redress or reopening shall be delivered to the clubhouse bar within the time limit.

14.2. The protest time limit is sixty (60) minutes after the signal boat has arrived at her berth in Santa Cruz Harbor. The protest filing time limit will be posted on the official notice board.

14.3. Notices will be posted no later than thirty (30) minutes after the protest filing time limit to inform competitors of hearing in which they are parties.

15. Scoring

15.1. One race is required to constitute a series.