

2017-2018 AYC Frostbite Series

SI ATTACHMENT A with Amendment 1 - Courses

- A1 Start
 - A1.1 There are two possible starting locations, each with one end on the U.S. Naval Academy – by Hartford Light and by Triton Light.
 - A1.2 The shore end of the line will be a staff with an orange flag.
 - A1.3 The pin end of the line will be an orange floating mark, EXCEPT when Numeral 1 precedes the course designation, then the pin end will be:
 - (a) for Hartford Light starts: Green “Can 1SC”
 - (b) for Triton Light starts: Yellow “Can B”
- A2 Finish
 - A2.1 For the 1st Series, the finish line will be between a staff with the RC flag on the AYC “L” dock and the flagpole with yard arm at the Annapolis City Marina.
 - A2.2 For the 2nd Series, the finishing line will be between a staff with an orange flag on the north dock of the National Sailing Hall of Fame (NSHOF) and a floating orange mark off the end of that dock.
- A3 Marks
 - A3.1 Marks are government marks, except for the special drop marks.
 - A3.2 Except where specifically noted, rounding marks are to be rounded on the side shown in the course diagrams
 - A3.3 S is a special drop mark approximately 200 yards south of the Naval Academy Bridge at @ 38 59.534 N and 76 29.165 W.
 - A3.4 S1 is a special drop mark on a line between Annapolis Harbor Channel Light 4 and Back Creek entrance mark Green B1.
 - A3.5 Can “1SC”, Fl R “4”, Fl Y “A” and Fl “HP” are passing marks and shall always be passed on the channel side.
 - A3.6 Marks “A”, “B”, “C”, “D” refer to yellow cans in vicinity of the Naval Academy (Note: Yellow Can “A” is NOT Dolphin Fl Y “A”).

2017-2018 AYC Frostbite Series

SI ATTACHMENT A with Amendment 1 - Courses

Courses - Hartford Start

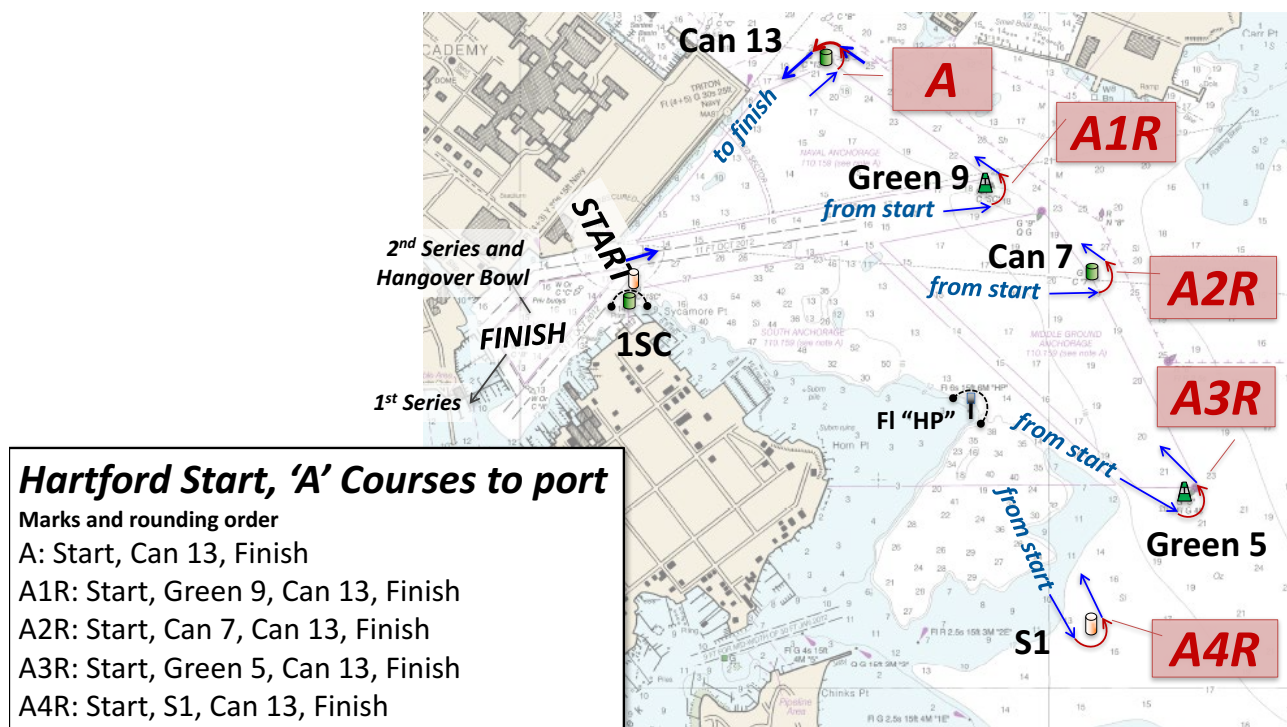
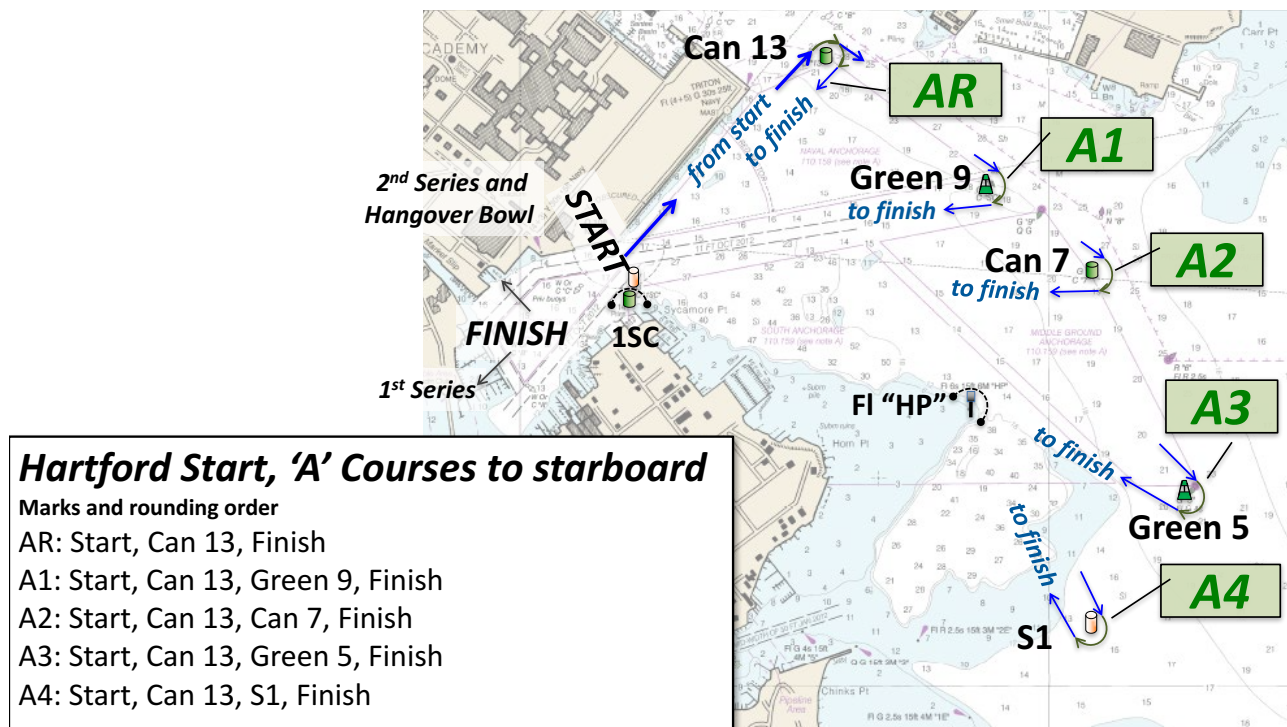
<p><i>'A' Courses to starboard</i></p> <p>Marks and rounding order</p> <p>AR: Start, Can 13, Finish</p> <p>A1: Start, Can 13, Green 9, Finish</p> <p>A2: Start, Can 13, Can 7, Finish</p> <p>A3: Start, Can 13, Green 5, Finish</p> <p>A4: Start, Can 13, S1, Finish</p>	<p><i>'B' Courses to stbd</i></p> <p>Marks and rounding order</p> <p>BR: Start, Green 9, Finish</p> <p>B1: Start, Green 9, Can 5, Finish</p> <p>B2: Start, Green 9, S1, Finish</p>	<p><i>'C' Courses to stbd</i></p> <p>Marks and rounding order</p> <p>CR: Start, Can 7, Finish</p> <p>C1: Start, Can 7, Can 5, Finish</p> <p>C2: Start, Can 7, S1, Finish</p>
<p><i>'A' Courses to port</i></p> <p>Marks and rounding order</p> <p>A: Start, Can 13, Finish</p> <p>A1R: Start, Green 9, Can 13, Finish</p> <p>A2R: Start, Can 7, Can 13, Finish</p> <p>A3R: Start, Green 5, Can 13, Finish</p> <p>A4R: Start, S1, Can 13, Finish</p>	<p><i>'B' Courses to port</i></p> <p>Marks and rounding order</p> <p>B: Start, Green 9, Finish</p> <p>B1R: Start, Can 5, Green 9, Finish</p> <p>B2R: Start, S1, Green 9, Finish</p>	<p><i>'C' Courses to port</i></p> <p>Marks and rounding order</p> <p>C: Start, Can 7, Finish</p> <p>C1R: Start, Can 5, Can 7, Finish</p> <p>C2R: Start, S1, Can 7, Finish</p>

Courses - Triton Light Start

<p><i>'A' Courses to starboard</i></p> <p>Marks and rounding order</p> <p>A1: Start, S, Can B, Can A, Finish</p> <p>A2: Start, S, Can B, Green 9, Finish</p> <p>A3: Start, S, Can B, Can 7, Finish</p> <p>A4: Start, S, Can B, Green 5, Finish</p>	<p><i>'A' Courses to port</i></p> <p>Marks and rounding order</p> <p>A1R: Start, Can A, Can B, S, Finish</p> <p>A2R: Start, Green 9, Can B, S, Finish</p> <p>A3R: Start, Can 7, Can B, S, Finish</p> <p>A4R: Start, Green 5, Can B, S, Finish</p>	
<p><i>'B' Courses</i></p> <p>Marks and rounding order. Marks to be left to starboard except Can 13 to be left to port.</p> <p>B1: Start, S, Can B, Nun 8, Can 13, Finish</p> <p>B2: Start, S, Can B, Red 6, Can 13, Finish</p> <p>B3: Start, S, Can B, S1, Can 13, Finish</p>	<p><i>'C' Courses to starboard</i></p> <p>Marks and rounding order</p> <p>C1: Start, Green 9, Finish</p> <p>C2: Start, Can 7, Finish</p> <p>C3: Start, Green 5, Finish</p> <p>C4: Start, S1, Finish</p>	<p><i>'D' Courses to port</i></p> <p>Marks and rounding order</p> <p>D1: Start, S1, Green 5, Finish</p> <p>D2: Start, S1, Can 7, Finish</p> <p>D3: Start, S1, Green 9, Finish</p> <p>D4: Start, S1, Can 13, Finish</p>

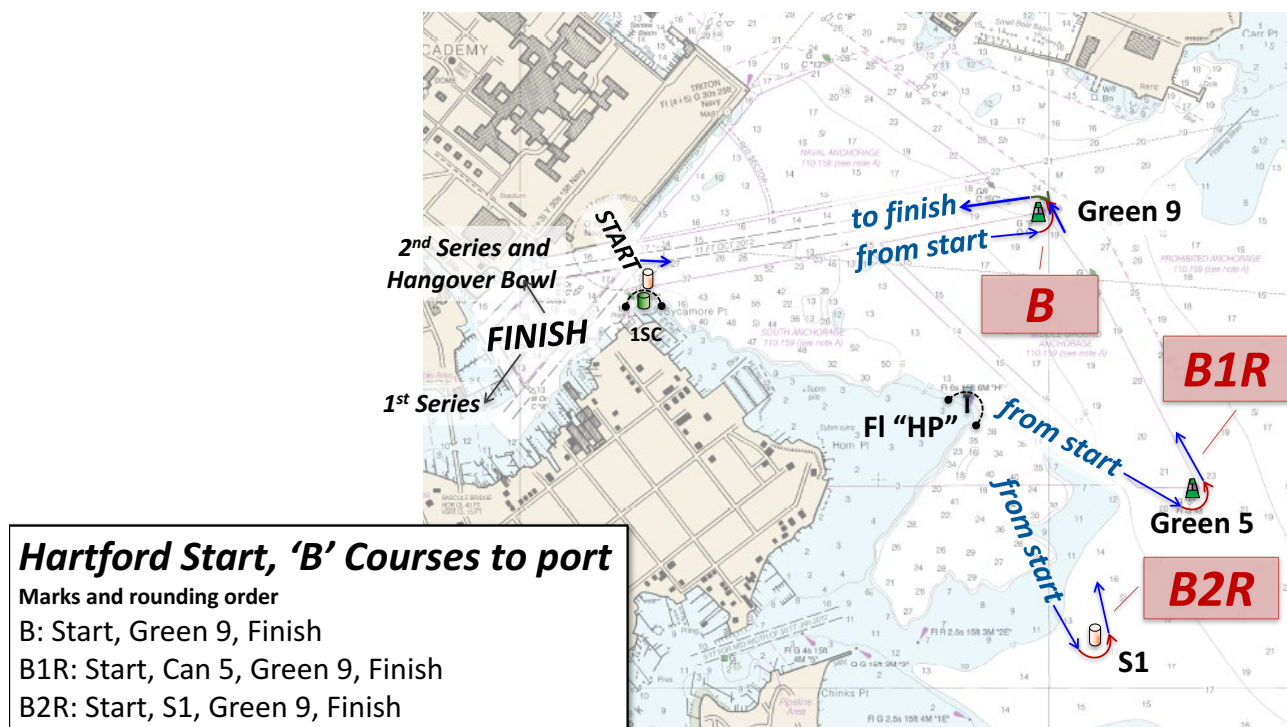
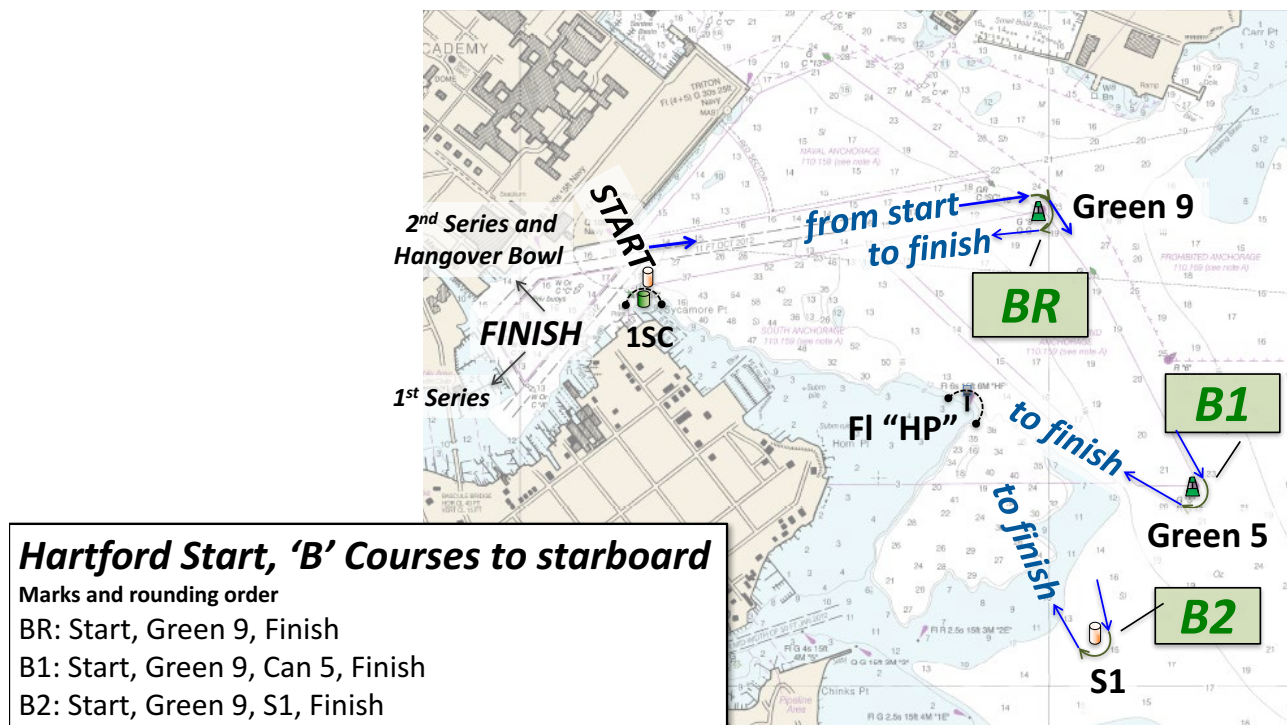
2017-2018 AYC Frostbite Series

SI ATTACHMENT A with Amendment 1 - Courses



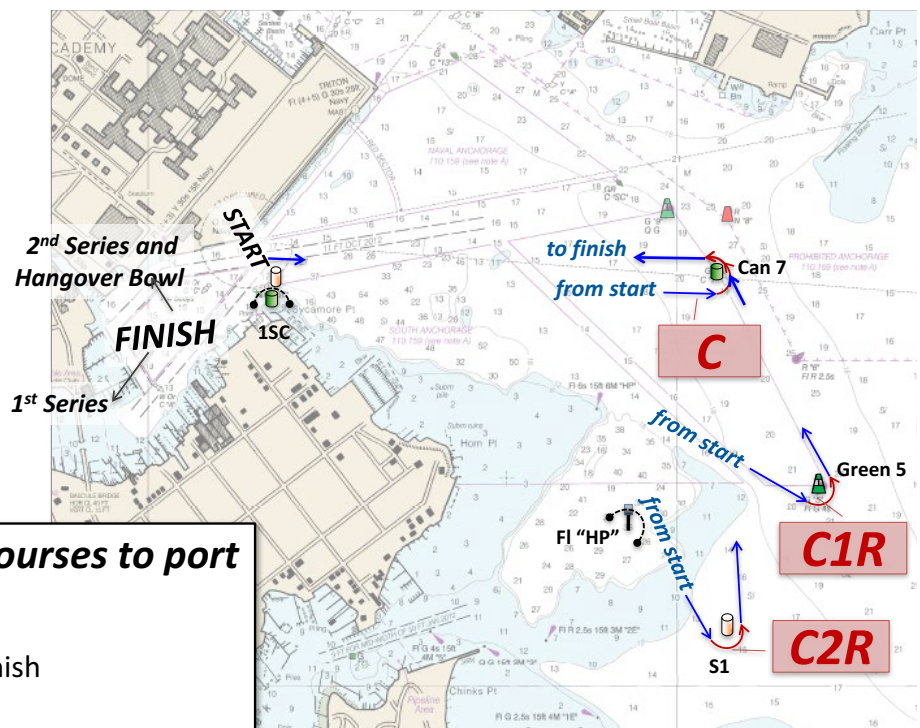
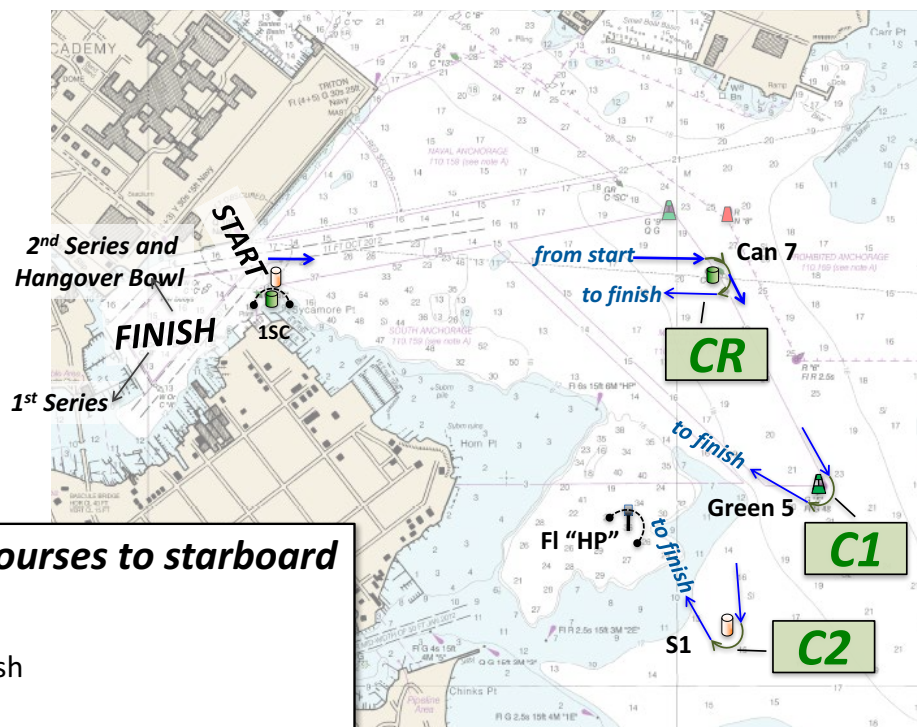
2017-2018 AYC Frostbite Series

SI ATTACHMENT A with Amendment 1 - Courses



2017-2018 AYC Frostbite Series

SI ATTACHMENT A with Amendment 1 - Courses



2017-2018 AYC Frostbite Series SI ATTACHMENT A with Amendment 1 - Courses

Triton Light Start, 'A' Courses to starboard

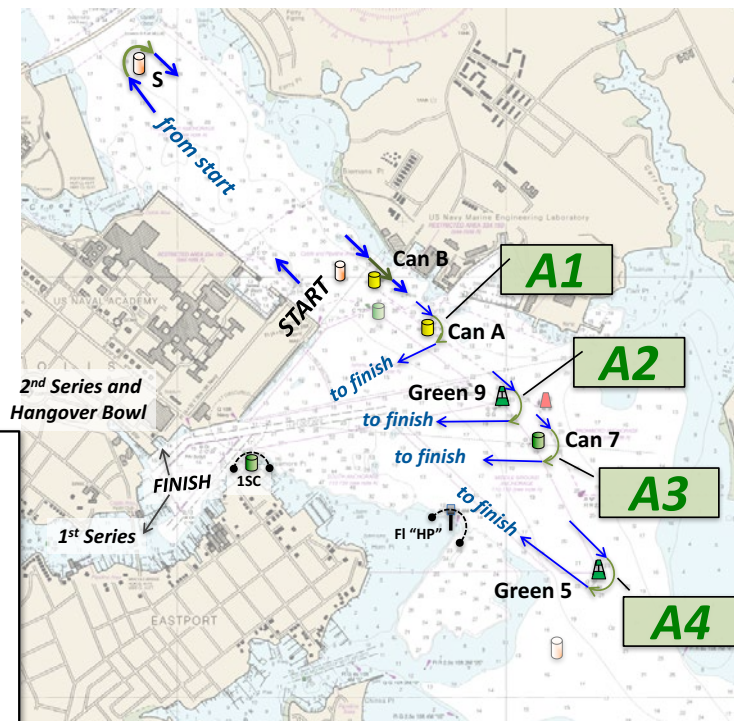
Marks and rounding order

A1: Start, S, Can B, Can A, Finish

A2: Start, S, Can B, Green 9, Finish

A3: Start, S, Can B, Can 7, Finish

A4: Start, S, Can B, Green 5, Finish



Triton Light Start, 'A' Courses to port

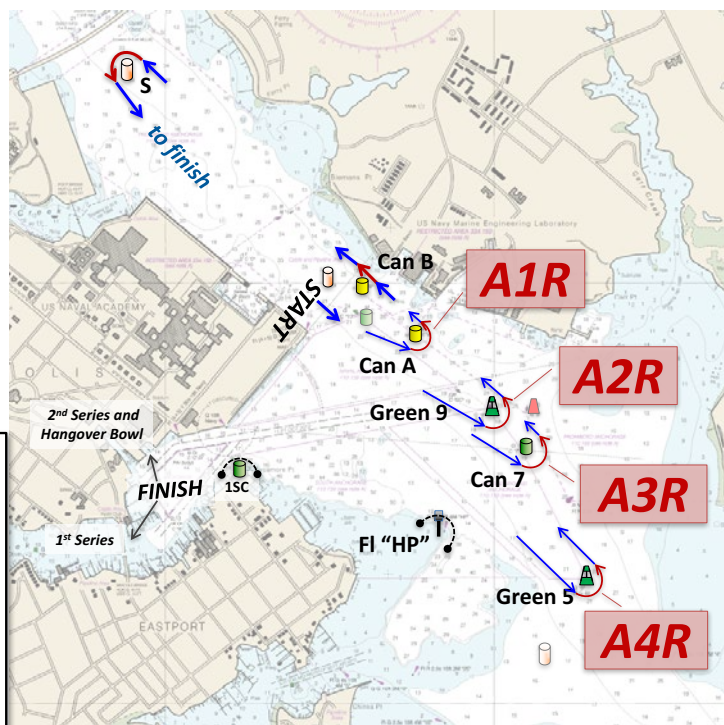
Marks and rounding order

A1R: Start, Can A, Can B, S, Finish

A2R: Start, Green 9, Can B, S, Finish

A3R: Start, Can 7, Can B, S, Finish

A4R: Start, Green 5, Can B, S, Finish



2017-2018 AYC Frostbite Series

SI ATTACHMENT A with Amendment 1 - Courses

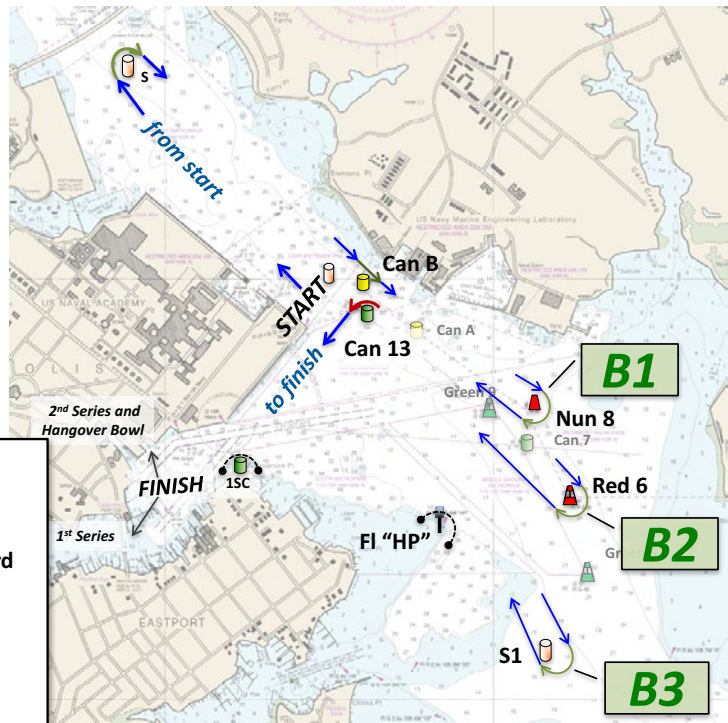
Triton Light Start, 'B' Courses to starboard

Marks and rounding order. Marks to be left to starboard except Can 13 to be left to port.

B1: Start, S, Can B, Nun 8, Can 13, Finish

B2: Start, S, Can B, Red 6, Can 13, Finish

B3: Start, S, Can B, S1, Can 13, Finish



Triton Light Start, 'C' Courses to starboard

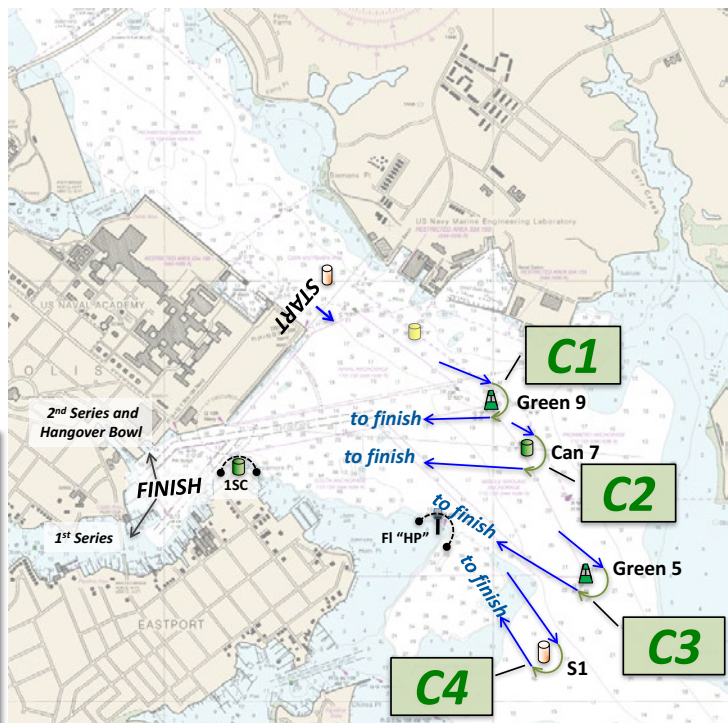
Marks and rounding order

C1: Start, Green 9, Finish

C2: Start, Can 7, Finish

C3: Start, Green 5, Finish

C4: Start, S1, Finish



2017-2018 AYC Frostbite Series SI ATTACHMENT A with Amendment 1 - Courses

Triton Light Start, 'D' Courses to port

Marks and rounding order

- D1: Start, S1, Green 5, Finish
- D2: Start, S1, Can 7, Finish
- D3: Start, S1, Green 9, Finish
- D4: Start, S1, Can 13, Finish

