



THE HANGOVER RACE
January 1, 2018
The Rudder Club of Jacksonville
8533 Malaga Avenue
Jacksonville, FL 32244

Sailing Instructions

1. RULES

- 1.1 The race will be governed by The Racing Rules of Sailing (RRS) and the prescriptions of US SAILING
- 1.2 Racing Rule 41 is changed by SI 15.4.
- 1.3 Racing Rules 35, A4 and A5 of the RRS are changed by SI 13.2.2
- 1.4 SI 14.4 implements Appendix T, Arbitration.

2. NOTICES TO COMPETITORS

Notices to competitors will be posted on the official notice board on the north exterior wall of the Rudder Club.

3. CHANGES IN THE SAILING INSTRUCTIONS

Any change in the Sailing Instructions will be posted on the official bulletin board on the north exterior wall of the Rudder Club before 0900 on January 1st.

4. SIGNALS MADE ASHORE

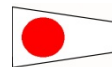
- 4.1 Signals made ashore will be displayed from the flag pole located on the north side of the Rudder Club.
- 4.2 When Code Flag "AP", Answering Pennant is displayed ashore, "1 minute" is replaced with "not less than 60 minutes" in the race signal AP.

5. SCHEDULE OF RACE

- 5.1 Schedule of Events
January 1st 2018
Registration: 1130 - 1230
Competitor's meeting: 1245
Warning signal for first class: 1355
- 5.2 All registered boats will race as one Portsmouth North American class.
- 5.3 There will be one race.

6. CLASS FLAGS

Class flag will be the International Numeral Pennant One as depicted under Race Signals in the RRS.



7. RACING AREA

The racing area will be in the St. Johns River between the Buckman Bridge to the south and the Fuller Warren Bridge to the north as depicted on NOAA Chart 11492.

8. THE COURSE

The course will be a windward leeward as depicted in Attachment A and displayed on a white board on the Race committee boat. A numeral following the course description will indicate that the course is that many times around. The final leg will be from the final windward mark directly to the finish in the vicinity of the pier.

9. MARKS

- 9.1 The starting mark will be a yellow cylinder set to the left of the committee boat relative to the first leg of the course.
- 9.1 The windward mark will be an orange cylinder set to windward of the starting line and designated as "W" or it will be a River Navigation Mark as depicted in attachment B.
- 9.2 The leeward mark will be the starting mark and will be a yellow cylinder. It will be designated "L" on the course board.
- 9.3 The finish mark will be a small orange sphere.
- 9.4 All marks will be left to port

10. START

The starting line will be between an orange flag flown on the Race Committee Boat and a mark set toward the left side of the course from the RC boat. The starting line will be designated "S" on the course board.

11. CHANGE OF COURSE AFTER THE START

11.1 To change the next leg of the course, the race committee will move the original mark to a new position.

11.2 A change of course will be signaled near the mark beginning the leg being changed by a race committee boat that will display code flag "CHARLIE" and sound a horn periodically.

12 THE FINISH

The finish line will be between an orange flag on the committee boat and an orange mark set to its left relative to the last leg of the course. The finish line will be designated "F" on the course board.

13 SCORING AND TIME LIMIT

13.1 All boats will be scored in accordance with the North American Portsmouth Yardstick.

13.2 Time Limit

The time limit shall be 3 hours.

14 PROTESTS AND REQUESTS FOR REDRESS

14.1 Protests and requests for redress shall be written on forms available at the Rudder Club. They shall be filed with the Race Officer.

14.2 The protest time limit is 90 minutes after the last boat has finished.

14.3 Protest notices will be posted on the Official Bulletin Board within 30 minutes following the protest time limit.

14.4 Appendix T, Arbitration, is in effect.

15 SAFETY

15.1 All competitors are required to conform to the U.S. Coast Guard regulations and the RRS concerning personal floatation devices and other required equipment. All yachts are reminded that under fundamental rule 4 "The responsibility for a boat's decision to participate in a race or to continue racing is hers alone.

15.2 Boats shall not impede the passage of a vessel which can safely navigate only within a narrow channel. Boats interfering with other vessels may be subject to protest by the Race Committee or contestants and possible disqualification.

15.3 In accordance with Rule 42.3(i), providing no significant advantage is gained, a boat may employ propulsion using an engine or

other method to remain clear of a non-racing vessel when required by Inland Rules.

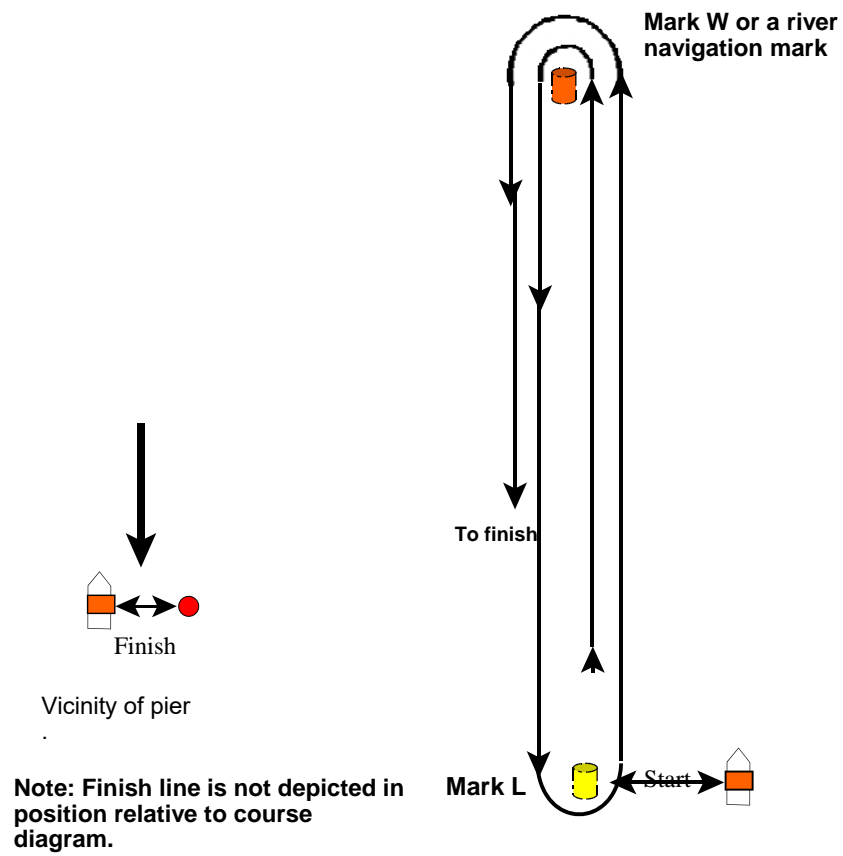
15.4 Racing Rule 41 is changed such that a boat accepting assistance under Fundamental Rule 1.1 is exempt from the provisions of RRS 41 - Outside Help. Capsized sailboats are encouraged to accept assistance as necessary.

15.5 The Race Committee boat will monitor Marine VHF Channel 78.

16 PRIZES

Results will be announced and prizes presented at the Rudder Club following the race.

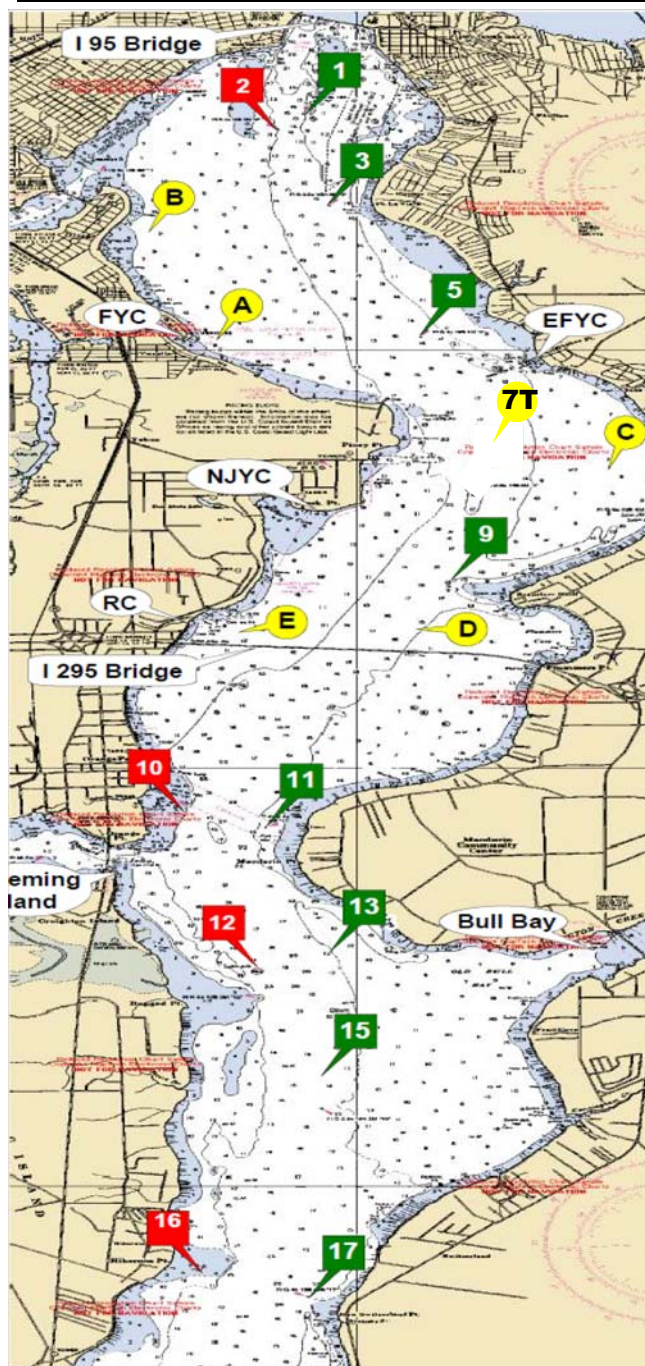
Attachment A



Course "WL" + Numeral

First Coast Sailing Association Race Marks

Distance	nm
1 to 3	1.039
1 to 5	2.787
1 to 7T	4.643
1 to A	2.793
1 to B	1.570
3 to 5	1.773
3 to 7T	3.615
3 to 9	4.638
3 to A	1.829
3 to B	1.126
3 to C	3.763
5 to 7T	1.863
5 to 9	2.926
5 to A	1.468
5 to B	2.299
5 to C	2.029
5 to D	3.486
7 to 9	1.095
7 to C	0.977
7 to D	1.697
7 to E	2.240
9 to C	1.726
9 to D	0.618
9 to E	1.486
A to B	1.523
A to C	3.140
B to C	4.303
C to D	2.328
C to E	3.111
D to E	1.127
11 to 13	2.317
11 to 15	3.400
11 to 17	5.631
11 to 17A	6.836
13 to 15	1.109
13 to 17	3.360
13 to 17A	4.575
13 to 18	5.585
15 to 17	2.252
15 to 17A	3.467
15 to 18	4.476
17 to 17A	1.216
17 to 18	2.225
17A to 18	1.010
18 to 20	2.038



Green 1
N 30° 17.813
W 81° 40.411

Red 2
N 30° 17.628
W 81° 40.635

Green 3
N 30° 16.780
W 81° 40.259

Green 5
N 30° 15.142
W 81° 39.466

Green 7 See Race Mark "7T"
N 30° 13.305
W 81° 39.077

Green 9
N 30° 12.216
W 81° 39.237

Red 10
N 30° 09.513
W 81° 41.359

Green 11
N 30° 09.305
W 81° 40.794

Red 12
N 30° 07.240
W 81° 40.800

Green 13
N 30° 07.036
W 81° 40.224

Green 15
N 30° 05.926
W 81° 40.283

Red 16
N 30° 04.038
W 81° 41.254

Green 17
N 30° 03.671
W 81° 40.393

Green 17A
N 30° 02.457
W 81° 40.522

Red 18
N 30° 01.445
W 81° 40.551

Green 19
N 30° 01.335
W 81° 40.279

Red 20
N 29° 59.822
W 81° 39.126

****Note:** If set these marks will be an inflatable mark.

Race Mark "A"

N 30° 15.090 W 81° 41.160

Race Mark "B"

N 30° 11.648 W 81° 39.522

Race Mark "C"

N 30° 13.564 W 81° 37.989

Race Mark "D"

N 30° 16.581 W 81° 41.539

Race Mark "E"

N 30° 11.648 W 81° 40.822

Race Mark "7T"

N 30° 13.305 W 81° 39.077