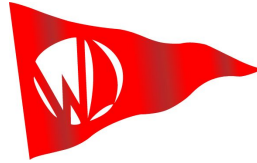


**Sailing Instructions**  
**Portlandia Cup**  
**Willamette Sailing Club**  
**Columbia Outpost**  
**February 17-18, 2018**



**WEST COAST SAILING**  
OWN THE WATER

**1 RULES**

- 1.1 The regatta will be governed by the rules as defined by the current Racing Rules of Sailing, the US Sailing prescriptions, the Notice of Race and these Sailing Instructions.
- 1.2 Class rules shall be observed and enforced by the competitors, except that competitors may use a “club sail” in place of a class legal sail, provided it is of the same dimensions and provides no added advantage.
- 1.3 In the event of a protest, boats under 10.5 meters are exempted from displaying a red flag (this modifies Opti Class rules).
- 1.4 A boat intending to protest about an incident that occurs in the racing area shall notify the race committee finish boat of her intention as soon as possible after finishing, including the sail number of the boat(s) being protested. This adds to RRS 61.1(a).

**2 NOTICES TO COMPETITORS**

Notices to competitors will be posted on the official notice board at McCuddys Marina.

**3 CHANGES TO SAILING INSTRUCTIONS**

Any change to the sailing instructions will be posted before 10:30am on the day it will take effect.

**4 SIGNALS MADE ASHORE**

- 4.1 Signals made ashore will be displayed from a docked RC boat.
- 4.2 When flag AP is displayed ashore, the warning signal will be made not less than 30 minutes after AP is taken down.

**5 SCHEDULE (all times approximate and subject to change)**

<b>Saturday, February 17, 2018</b>		<b>Sunday, February 18, 2018</b>	
<b>8am – 10am</b>	Registration /Rigging / Launch		
<b>10am</b>	Competitors Meeting	1pm: Participate in SoS racing to add to cumulative score line	
<b>11am</b>	First Warning		
<b>4pm</b>	No start after this time		

On Sunday, the racing will be done through “Sailing on Sunday’s” put on by CYC. We will be scoring those finishes only relative to your class.

**6 RACING AREA**

- 6.1 The Racing Area will be in front of McCuddys Marina.

## **7 NUMBER OF RACES**

- 7.1 10 races are scheduled for all classes.
- 7.2 A minimum of one race shall constitute a regatta.

## **8 STARTS and RACE TIME LIMITS**

- 8.1 Starts shall be made in accordance with rule 26.
- 8.2 In the absence of a class flag, Numbered penets will be assigned at the competitors meeting.
- 8.3 The Race Committee will attempt to hail boats that are over early. This is only a courtesy and will not be grounds for redress. Redress shall not be granted if the Race Committee fails to hail a sail number, is tardy in hailing a sail number, or if a competitor does not hear the hail.
- 8.4 Boats failing to finish within 15 minutes after the first boat finishes shall be scored Did Not Finish without a hearing. However, if there is a clear order among boats that fail to finish within the time limit, then those remaining boats may be finished in place by the Race Committee. This changes Rule 35.

## **9 COURSES ASSIGNMENTS AND STARTING ORDER**

- 9.1 All Classes will start on one course, Optis may use a shorter windward Mark.
- 9.2 The starting order for races will be J/105 and then Merit 25's.
- 9.3 Race Committee may change the above starting order for any reason; any such change will be announced by verbal hail prior to the warning signal.

## **10 COURSES**

- 10.1 See "Attachment A" for course diagram.
- 10.2 The target race length is approximately 15-25 minutes.
- 10.3 There will be no leeward gate, the leeward mark will be taken to port.

## **11 MARKS AND START/FINISH LINES (see Attachments)**

- 11.1 Marks will be inflatable orange balls.
- 11.2 The start/finish line(s) will be between an orange flag flown from the committee boat and the white or yellow start/finish buoy(s).

## **12 PROTESTS AND APPEALS**

- 12.1 Protest forms are available at the registration table. Completed protest forms shall be delivered to the PRO within the protest time limit.
- 12.2 The protest time limit is 30 minutes after race committee arrives back at the dock after each day's racing.
- 12.3 Notices will be posted within 10 minutes of the protest time limit to inform competitors of hearings in which they are parties or named as witnesses. Hearings will be held on the public beach or inside the PYC club house.

## **13 SCORING & PENALTY SYSTEMS**

- 13.1 The Low-Point scoring system of Appendix A will apply.
  - 13.1(a) When fewer than 5 races have been completed, a boat's overall score will be the total of her race scores.

- 13.1(b) When 5 or more races have been completed, a boat's overall score will be the total of her race scores excluding her worst score.
- 13.1(c) When 10 or more races have been completed, a boat's overall score will be the total of her race scores excluding her worst two scores.
- 13.1(d) If a competitor is disqualified, they may discard that score, provided they were not disqualified for poor sportsmanship (Rule 69) and they did not gain significant advantage by breaking a rule (Rule 2). Only in cases where one of these rules was broken shall their next worse score be excluded instead. This modifies Rule 90.3(b).

## **14 COACHING**

- 14.1 Coaching on the water is permitted between races. After the warning signal for a given race, all coaching shall cease until a competitor has finished that race. To avoid any interference with boats still racing, competitors shall be required to sail to an area at least 75 feet away from the start/finish line when meeting with coach/support boats between races.
- 14.2 Coaching while racing is permitted in cases where novice racers are slowing the progress of the regatta. Coaches shall only coach the back "10%" of the fleet if this is the case.

## **15 SUPPORT & SPECTATOR BOATS**

- 15.1 Except in the case of emergencies, support and spectator boats must remain a distance of 75 feet from the racing area at all times, and shall not cause significant wake in the racing area.
- 15.2 Coach, support, and spectator boats are required to carry a working VHF radio. They shall monitor VHF Channel 72 at all times.

## **16 PERSONAL FLOATATION DEVICES (PFD) AND PERSONAL EQUIPMENT**

- 16.1 Competitors shall wear a US Coast Guard (USCG) approved personal flotation device (PFD) while on the water other than for brief periods while adding or removing clothing. Except for the J/105 class who must only have a pfd onboard for each crew member.
- 16.2 In the case of the Y flag being flown all competitors must wear their PFDs.

## **17 COMMUNICATIONS**

- 17.1 Boats that are carrying their own VHF shall monitor Channel 72 for instructions from the RC.
- 17.2 The J105 fleet is not expected to attend the skipper's meeting but instead is asked to check in by sailing past the RC boat and verbally checking in.

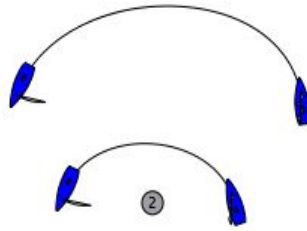
## **18 BOAT STORAGE**

- 18.1 Competitors' boats shall be stored Saturday night in an area designated by the Regatta Organizers.

## **19 PRIZES**

- 19.1 Prizes will be awarded in all classes for places for 1st and 2nd.

# Course Diagram



Windward Mark

Start  
Windward Mark  
Gate  
Windward Mark  
Finish  
\*Optis Use Shorter  
Windward Mark

opti windward mark

5

