



**BACARDÍ**

## BERMUDA INTERNATIONAL INVITATIONAL RACE WEEK

Royal Bermuda Yacht Club

April 28<sup>th</sup> - May 4<sup>th</sup> 2018

### ORGANISING AUTHORITY (OA)

The regatta is organized by the Royal Bermuda Yacht Club (RBYC) with the endorsement of the Bermuda Sailing Association (BSA).

### SAILING INSTRUCTIONS (SIs)

The notation '[DP]' means that the penalty for a breach of that rule may, at the discretion of the protest committee, be less than disqualification. The notation '[NP]' means Rules that are not grounds for protest by a boat (This changes rule 60.1(a))

#### 1. RULES

- 1.1. The series will be governed by the 'rules' as defined in *The Racing Rules of Sailing (RRS)*.
- 1.2. The Bermuda Sailing Association National Prescriptions shall apply and may be found at [www.sailing.bm](http://www.sailing.bm).
- 1.3. If there is a conflict between the NoR and these SIs, the rules in these SIs will take precedence.

#### 2. NOTICES TO COMPETITORS

Notices to competitors will be posted on the official notice board located on the terrace at the RBYC.

#### 3. CHANGES TO SAILING INSTRUCTIONS

Any change to the SIs will be posted before 0930 on the day it will take effect, except that any change to the schedule of races will be posted by end of protest time limit on the day before it will take effect.

#### 4. SIGNALS MADE ASHORE

- 4.1. Signals made ashore will be displayed on the right yard-arm of the RBYC flagpole facing the water.
- 4.2. Flag AP displayed with one sound means: '1 minute' is replaced with 'not less than 60 minutes' in the race signal AP.

#### 5. SCHEDULE OF RACES





- 5.1. Dates of racing and number of races per day scheduled:

|            | Etchells |         | IOD      |         | J105     |         | Viper 640 |         |
|------------|----------|---------|----------|---------|----------|---------|-----------|---------|
|            | Race Day | # Races | Race Day | # Races | Race Day | # Races | Race Day  | # Races |
| Sat Apr 28 | Racing   | 5       |          |         | Racing   | 5       | Racing    | 5       |
| Sun Apr 29 | Racing   | 5       | Racing   | 2       | Racing   | 5       | Racing    | 5       |
| Mon Apr 30 |          |         | Racing   | 3       |          |         |           |         |
| Tue May 1  |          |         | Racing   | 2       |          |         |           |         |
| Wed May 2  |          |         | Spare    |         |          |         |           |         |
| Thur May 3 |          |         | Racing   | 3       |          |         |           |         |
| Fri May 4  |          |         | Racing   | 2       |          |         |           |         |

- 5.2. The Spare Race Day scheduled for Wednesday May 2 is provisional and will be used if less than six races have been completed before the end of racing on Tuesday May 1st. The number of races scheduled will be specified with the announcement to use the spare race day in accordance with SI 3.
- 5.3. The scheduled time of the first warning signal each day will be 11:55 hours.
- 5.4. To alert boats that a race will begin soon, an orange flag defining the starboard end of the starting line will be displayed with one sound two minutes before a warning signal is displayed.
- 5.5. No warning signal will be made after 16:00 each day, except on Friday May 4 when no warning signal will be made after 15:00 hours.

## 6. CLASS FLAGS

Class flags will be:

| Class     | Insignia  | Description                           |
|-----------|---|---------------------------------------|
| Etchells  |  | Yellow Flag with black class insignia |
| IOD       |  | Green Flag with white class insignia  |
| J105      |  | Red Flag with white class insignia    |
| Viper 640 |  | White Flag with red class insignia    |

## 7. RACE AREAS

Attachment #1 shows the location of the racing area.

## 8. THE COURSES

- 8.1. The diagram in Attachment #2 shows the courses, including the approximate angles between legs, the order in which marks are to be passed, and the side on which each mark is to be rounded.
- 8.2. No later than the warning signal, the Race Committee (RC) Signal Boat will display the course number, and the approximate compass bearing from the starting line to Mark 1.
- 8.3. A leeward gate (two rounding marks) will be used. Boats shall sail between the gate marks from the direction of the previous mark and round either gate mark. If only one gate mark is set, boats shall round the single mark to port. The gate may be laid after the starting signal.
- 8.4. A windward offset mark will be used. The offset mark may be laid after the starting signal but will not be a mark of the course when a course change has been signaled.

## 9. MARKS

The starting mark will be an orange inflatable tetrahedron (ITB). Rounding marks will be yellow ITB. The offset mark will be an orange ball. New marks, as provided in SI 12 will be red ITB. The finishing mark will be an orange ITB.

## 10. AREAS THAT ARE OBSTRUCTIONS

There are no designated obstructions in the racing area.

## 11. THE START

- 11.1. Races will be started using RRS 26.
- 11.2. The starting line will be between a staff displaying an orange flag on the RC Signal Boat at the starboard end and the course side of the port end starting mark.
- 11.3. A boat that does not start within 4 minutes after her starting signal will be scored Did Not Start without a hearing. This changes RRS A4 and A5.
- 11.4. As a courtesy to competitors, the anticipated class starting order may be indicated on the course board in descending order and may be announced on VHF 73.
- 11.5. When Code Flag "W" is displayed with the warning signal, it will mean that spinnakers shall not be hoisted by that class during that race.
- 11.6. The RC may attempt to notify any boat that breaks RRS 29.1 by broadcasting their sail number on VHF channel 73. The following will not be cause for redress: failure of a boat to receive the recall broadcast; a boat's position in the sequence of broadcast numbers; or failure of the RC to hail a boat's number. This changes RRS 62.1(a).
- 11.7. The RC may deploy a 'Keep Off' buoy astern of the RC Signal Boat.

## 12. CHANGE OF THE NEXT LEG OF THE COURSE

- 12.1. To change the next leg of the course, the RC will lay a new mark (or move the finishing line) and remove the original mark as soon as practicable. When in a subsequent change a new mark is replaced, it will be replaced by an original mark.
- 12.2. When there is a change of course prior to the start, the RC will signal the change with the warning signal of the class starting in accordance with SI 11.1 but without repetitive sound signals.

### **13. THE FINISH**

---

The finishing line will be between a staff displaying a blue flag on the RC Finish Line Boat at the port end and the course side of the starboard end finishing mark.

### **14. PENALTY SYSTEM**

---

The Two-Turns Penalty is replaced by a One-Turn Penalty for all violations of Part 2 except for violations that occur within the Zone around a mark, other than a starting mark, and where 44.1(b) applies. This changes RRS 44.1.

### **15. TIME LIMITS AND TARGET TIMES**

---

- 15.1. All times will be taken from GPS.
- 15.2. Time limits for each race will be 90 minutes. If no boat has passed Mark 1 within 30 minutes the race will be abandoned.
- 15.3. The target time for each race will be 45 minutes. Failure to meet the target time will not be grounds for redress. This changes RRS 62.1(a).
- 15.4. Boats failing to finish within 10 minutes after the first boat sails the course and finishes will be scored Did Not Finish without a hearing. This changes RRS 35, A4 and A5.

### **16. PROTESTS AND REQUESTS FOR REDRESS**

---

- 16.1. Protest forms are available at the RBYC located in an envelope on the official notice board. Completed protest forms shall be filed with the protest committee desk not later than 60 minutes after the docking of the RC vessel. The end of Protest time limit will be posted on the official notice board.
- 16.2. The same protest time limit applies to all Protests by the RC or International Jury about incidents they observe in the racing area and for Requests for Redress.
- 16.3. A notice will be posted on the official notice board as soon as possible after receipt of Protests to inform competitors there is a hearing in which they are parties to a Protest or named as witnesses.
- 16.4. The posting of hearing notices shall be considered notices as required by RRS 61 and 62.2.
- 16.5. On the last day of racing a request for reopening a hearing shall be delivered:
  - 16.5.1. within the Protest time limit if the requesting party was informed of the decision on the previous scheduled day;
  - 16.5.2. no later than 30 minutes after the party requesting reopening was informed of the decision on that day.
- 16.6. On the last day of racing a request for redress based on a jury decision shall be delivered no later than 30 minutes after the decision was posted. This changes RRS 62.2.
- 16.7. Decisions of the International Jury will be final as provided in RRS 70.5.

### **17. SCORING**

---

- 17.1. For all classes 3 races are required to be completed to constitute a series.
- 17.2. When fewer than 5 races have been completed, a boat's series score will be the total of her race scores.
- 17.3. When from 5 to 9 races have been completed, a boat's series score will be the total of her race scores excluding her worst score.
- 17.4. When 10 or more races have been completed, a boat's series score will be the total of her race scores excluding her two worst scores.
- 17.5. Excluded scores for the IOD Overall series will be the worst scores regardless of whether they are in the 'A' or 'B' series and regardless of whether either of these series is valid.
- 17.6. Scores for the IOD Class will accrue to the skipper, not the boat.

### **18. SAFETY REGULATIONS**

---

- 18.1. [DP] Competitors shall check in each day with the RC signal boat by sailing on starboard tack past the stern of the boat and hailing their sail number until they are acknowledged.
- 18.2. [DP] A boat that retires from a race shall notify the RC as soon as possible.

### **19. REPLACEMENT OF CREW OR EQUIPMENT**

---

- 19.1. [DP] Substitution of competitors will not be allowed without prior written approval of the RC.
- 19.2. [DP] Substitution of damaged or lost equipment will not be allowed unless authorized by the RC. Requests for substitution shall be made to the RC at the first reasonable opportunity.

---

**20. EQUIPMENT AND MEASUREMENT CHECKS**

---

On the water, a boat can be instructed by a member of the RC to proceed immediately to a designated area for inspection.

---

**21. EVENT ADVERTISING**

---

[DP] Boats shall display event advertising supplied by the OA. If this rule is broken, World Sailing Regulation 20.9.2 applies.

---

**22. OFFICIAL BOATS**

---

Official RC boats shall be described to competitors at the competitor briefing, and will fly a blue or yellow RC flag.

---

**23. SUPPORT BOATS**

---

[DP] Team leaders, coaches and other support persons shall stay outside areas where boats are racing from the time of the preparatory signal for the first class to start until all boats have finished or retired or the RC signals a postponement, general recall or abandonment.

---

**24. TRASH DISPOSAL**

---

Trash may be placed aboard support or official boats.

---

**25. HAUL-OUT RESTRICTIONS**

---

With the exception of the Viper 640 class, boats shall not be hauled out during the regatta except with written permission of the RC.

---

**26. DIVING EQUIPMENT AND PLASTIC POOLS**

---

[DP] Underwater breathing apparatus and plastic pools or their equivalent shall not be used around keelboats between the preparatory signal of the first race and the end of the regatta.

---

**27. RADIO COMMUNICATION**

---

- 27.1. Except in an emergency, a boat that is racing shall not make voice or data transmissions and shall not receive voice or data communication that is not available to all boats.
- 27.2. VHF Channel 73 will be used by the RC for communication purposes.
- 27.3. Support boats are required to monitor VHF Channel 73 to render assistance in an emergency as requested by the RC.

---

**28. PRIZES**

---

- 28.1. The number of prizes in each class will depend on the number of entries in that class.
- 28.2. IOD Overall winner will be awarded the "Vrengen Gold Cup".
- 28.3. IOD Series 'A' winner will be awarded the "Jordy Walker Memorial Trophy".
- 28.4. IOD Series 'B' winner will be awarded the "Dick Kempe Memorial Trophy".
- 28.5. Etchells Overall winner will be awarded the "K. F. Trimmingham Cup".
- 28.6. J105 Overall winner will be awarded the "B.W. Walker Memorial Trophy".

---

**29. DISCLAIMER OF LIABILITY**

---

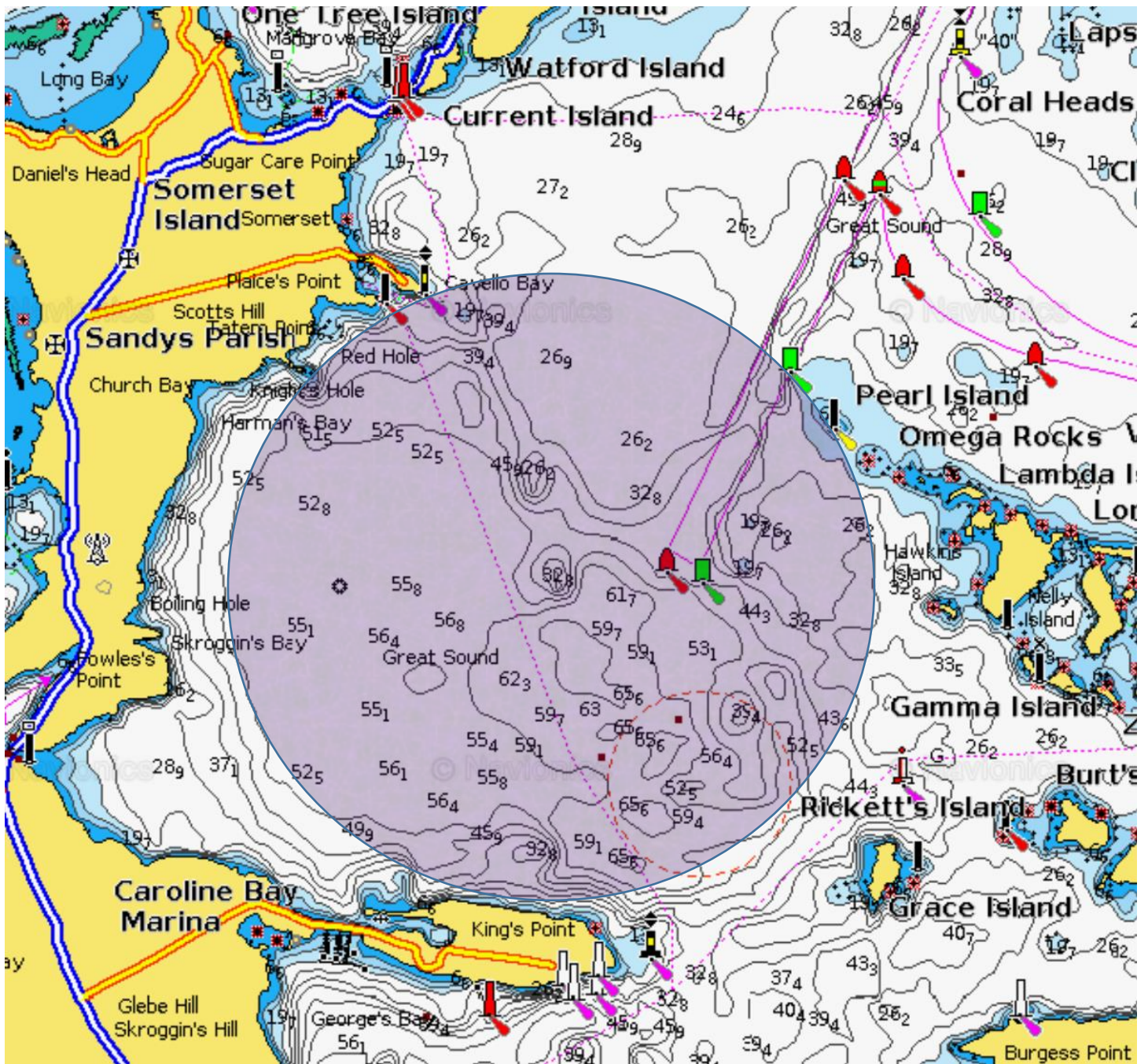
Competitors participate in the regatta entirely at their own risk and responsibility. See RRS 4, Decision to Race. The OA will not accept any liability for material damage or personal injury or death sustained in conjunction with or prior to, during, or after the regatta.

---

**30. INSURANCE**

---

Each participating boat shall be insured with valid third-party liability insurance with a minimum cover of USD/BMD \$500,000 per incident or the equivalent.



ATTACHMENT #2

COURSE 2 – START, 1, 1a, FINISH

COURSE 4 – START, 1, 1a, 2P/2S, 1, 1a, FINISH

COURSE 6 – START, 1, 1a, 2P/2S, 1, 1a, 2P/2S, 1, 1a, FINISH

