

2018 RACE CHART

BEVERLY YACHT CLUB, MARION, MA

CAUTION

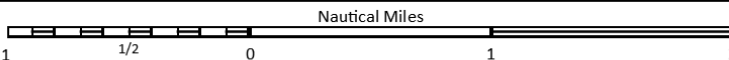
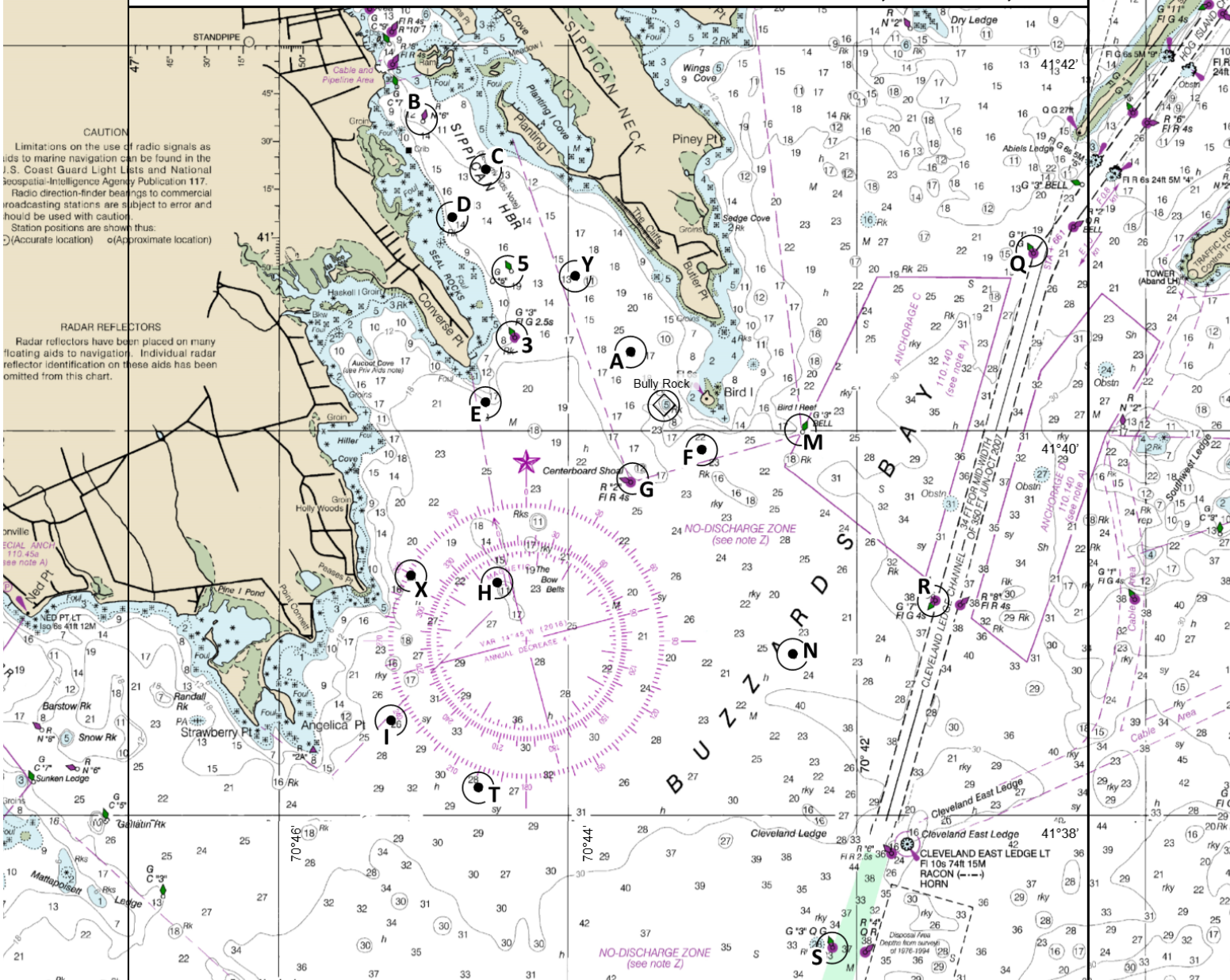
Limitations on the use of radio signals as aids to marine navigation can be found in the U.S. Coast Guard Light Lists and National Geospatial-Intelligence Agency Publication 117.

Radio direction-finder bearings to commercial broadcasting stations are subject to error and should be used with caution.

Station positions are shown thus:
○ (Accurate location) ◐ (Approximate location)

RADAR REFLECTORS

Radar reflectors have been placed on many floating aids to navigation. Individual radar reflector identification on these aids has been omitted from this chart.



THIS CHART IS NOT TO BE USED FOR NAVIGATIONAL PURPOSES.

Except when indicated as turning marks, all yachts must pass East of Marks "3", "5" and "E", and pass South of marks "F" and "I".

- - USCG Aid To Navigation
- - BYC Private Mark
- ⊙ - BYC Private Rock Marker

MARK	DESCRIPTION
3	Sippican Harbor Lighted Green Buoy "3" (FI G 2.5s) East of Converse Point
5	Sippican Harbor Green Can "5" East of Seal Rocks
A	BYC Yellow Can "A" West of Butler Point
B	Sippican Harbor Red Nun "6" South of Ram Island
C	BYC Yellow Can "C" West of Planting Island
D	BYC Yellow Can "D" Northeast of Seal Rocks
E	BYC Yellow Can "E" Southeast of Converse Point
F	BYC Yellow Can "F" South of Bird Island
G	Sippican Harbor Lighted Red Buoy "2" (FI R 4s) at Centerboard Shoal Southwest of Bird Island
H	BYC Yellow Can "H" at The Bow Bells East of Point Connett
I	BYC Yellow Can "I" East of Angelica Point
J	Portable Turning Mark to Leeward of Start / Finish Line
K	West Island Red Bell "2SE" (off chart)
L	Weepectet Rock Lighted Red Gong "8" (FI R) (off chart)
M	Bird Island Green Bell "3" Southeast of Bird Island
N	BYC Yellow Can "N" Southeast of Bird Island

MARK	DESCRIPTION
O	Portable Offset Turning Mark near Windward Turning Mark
P	Portable Alternate Finish Line Pin directly on the opposite side of start boat from starting line pin
Q	Hog Island Channel lighted Green Buoy "1" (Q FI G) Southwest of Abiels Ledge
R	Cleveland Ledge Channel Lighted Green Gong "7" (FI G 4s) Northeast of Cleveland Light
S	Cleveland Ledge Channel Lighted Green Buoy "3" (Q FI G) Southwest of Cleveland Light
T	BYC Yellow Can "T" Southeast of Angelica Point
U	Portable Pin end of Start / Finish Line to Port of Signal Boat
V	Portable Turning Mark a Short Distance to Windward of Start / Finish
W	Portable Windward Turning Mark at Bearing and Distance Posted on signal boat
X	BYC Yellow Can "X" East of Peases Point
Y	BYC Yellow Can "Y" Southwest of The Cliffs
Z	Buzzards Bay Lighted Red Gong "10" (FI R) Southeast of West Island (off chart)