

**Big Dinghy Regatta**  
April 21<sup>th</sup> & 22<sup>th</sup>, 2018  
Richmond Yacht Club  
Pt. Richmond, CA  
**SAILING INSTRUCTION**

**1 RULES**

- 1.1 The regatta will be governed by the rules as defined in *The Racing Rules of Sailing* .
- 1.2 RRS 40 is changed and Preamble to part IV as follows: “Competitors are required to wear a PFD while racing except while briefly changing clothing. Wetsuits do not qualify as PFDs and are strongly encouraged to be worn by sailors under 18 years of age.”
- 1.3 RRS 44.1 is changed and Appendix I is in effect:
- 1.4 US PRESCRIPTION 63,2 is deleted.

**2 NOTICES TO COMPETITORS**

- 2.1 Notice to competitors will be posted on the RYC Bulletin Board located on the north wall of the regatta room on the first floor of the club.

**3 CHANGES TO SAILING INSTRUCTIONS**

- 3.1 Changes to the Sailing instructions will be posted no later than 0930 on the day it is to take effect except that a change to the schedule of races will be posted by 1800 hours the day before it is to take effect.
- 3.2 Starting times for the Sunday pursuit race will be posted online and on the RYC Official Notice Boards on Saturday April 21<sup>th</sup> by 1700 hours. Copies of the pursuit race start times will be available at the Sunday Competitors meeting.

**4 SIGNALS MADE ASHORE**

- 4.1 Signals made ashore will be displayed at RYC clubhouse on a flag pole on the upper deck.
- 4.2 When flag AP is displayed ashore, ‘1 minute’ is replaced with ‘not less than 60 minutes’ in the race signal AP.

**5 SCHEDULE OF RACES**

- 5.1 Dates of racing:

<u>Saturday</u>	1000	<i>Competitors meeting lower deck</i>
<u>04/21/18</u>		
	1200	First warning
	Races 2-4	Shortly after completion of previous race
<u>Sunday</u>	1030	<i>Competitors meeting lower deck</i>
<u>04/22/18</u>		
	1125	Short course warning
	1155	Long course warning

**Note:** Depending on the number of boats registered in each class, the list of classes to be given a start, the combination of classes in a single start, the classes assigned to Open Class that will be competing using the Portsmouth rating (classes with less than 5 boats) and the initial order of starts may be changed by verbal amendment at the Saturday competitors meetings or on the water through display of class flags at the warning. This changes RRS 90.2 (c)

- 5.2 The scheduled time of the warning signal for the first race for Saturday is 1200 hours.
- 5.3 To alert boats that a race or sequence of races will begin soon, except for the first start of the day, the course flag will be displayed with multiple call to attention sounds at least 30 seconds before a warning signal is made.
- 5.4 On Saturday 4/21/18 no warning signal will be made after 1600 hours.

## 6 CLASS FLAGS

Class flags will be:

### Potrero Reach Course:

Byte	Class flag	One Design Start
Snipe	Class flag	One Design Start
El Toro	Class flag	One Design Start
Sunfish, Day Sailer	Flag D	Open Class

### South Hampton Course:

<i>114, thistle, 29</i>	Flag G	Open Class
<i>Melges 14</i>	B	One Design Start
<i>laser</i>	Class flag	One Design Start

## 7 RACING AREAS

- 7.1 Attachment E & F show the areas for the Sunday pursuit race.

## 8 THE COURSES

- 8.1 The diagrams in Attachment A & B show the courses, including the order in which marks are to be passed, the side on which each mark is to be left.
- 8.2 Courses will will be signalled with a numerical flag.
- 8.3 The Sunday pursuit race start and finish for both the long and short course will be between the RYC platform and a yellow mark.

## 9 MARKS

- 9.1 Attachment A & B for description of Marks. Marks will be red or yellow inflatables.

## 10 AREAS THAT ARE RESTRICTED

- 10.1 The following areas are designated as restricted: the start finish line on both Saturday and Sunday.
- 10.2 The area within 200 yards of Chevron Long wharf in any direction is restricted.

10.3 The continuous area marked by yellow marks on the north/northeast side of Brooks Island.

## 11 THE START

11.1 Races will be started as follows: This changes rule 26.

Minutes before start signal	Visual signal	Sound signal	Meaning
3	Class flag	One	Warning
2	P, I, Z with I,U, or Black Flag.	One	Preparatory
1	Preparatory Flag removed	One long	One minute
0	Class flag removed	One	Start

11.2 The starting line will be between a staff displaying orange flag on the signal boat and the starting mark.

11.3 Boats whose warning signal has not been made shall avoid the starting area during the starting sequence for other races.

11.4 A boat starting later than 3 minutes after her starting signal will be scored Did Not Start without a hearing. This changes RRS A4 and A5.

11.5 For the Sunday Pursuit Race the initial start will be in accordance with RRS 26. The warning Flag will be the Jolly Roger and will remain displayed until the last start.

For the Sunday Pursuit race after the first start signal a sound will be made every minute on the minute regardless of whether a boat is starting at that time.

11.6 For the Sunday pursuit race there will be a starting penalty of 5 percent of the total score if the boat is OCS unless the penalty is cleared. The X Flag will be displayed for one minute with no sound or until the penalty is cleared. This changes RRS 29.1.

11.7 For the Sunday Pursuit Race a boat starting later than 10 minutes after her starting time shall be scored “Did Not Start” without a hearing. This changes RRS 35, A4, and A5.

## 12 FINISH

12.1 For the Saturday Buoy Racing the finish line will be between a staff displaying a blue flags on the signal boat and a mark on the course side.

12.2 For the Sunday pursuit race the finish line will be a staff displaying an orange flag on the Platform and the yellow finishing mark.

## 13 TIME LIMITS

13.1 For Saturday racing, boats failing to finish within 15 minutes after the first boat sails the course and finishes will be scored Did Not Finish without a hearing. This changes RRS 35, A4 and A5.

13.2 For Saturday racing, Boats failing to finish within 30 minutes of their start will be scored Did Not Finish without a hearing. This changes RRS 35, A4 and A5.

- 13.3 For the Sunday Pursuit race Boats failing to finish before 1700 hours will be scored Did Not Finish without a hearing. This changes RRS 35, A4 and A5.

#### **14 PROTESTS AND REQUESTS FOR REDRESS**

- 14.1 Protest forms are available at the race office located in the first floor regatta room. Protests and requests for redress or reopening shall be delivered there within the appropriate time limit.
- 14.2 The protest time limit is 30 minutes after the Signal boat docks.
- 14.3 Notices “of protests” will be posted no later than 30 minutes after the protest time limit to inform competitors of hearings in which they are parties or named as witnesses. Hearings will be held in the protest room, located at the library on the first floor of the clubhouse.

#### **15 SAFETY REGULATIONS**

- 15.1 All boats shall carry a 20 ft towline attached to the bow or mast for towing or to assist in boat recovery.
- 15.2 A boat that retires from a race shall notify the race committee as soon as possible.
- 15.3 Prior to the first race each day boats shall check in with the race committee by sailing past the stern on starboard and hail her sail number for recognition.
- 15.4 Competitors are reminded that commercial vessels have the right of way at all times and violations are subject to protest.

#### **16 REPLACEMENT OF CREW OR EQUIPMENT**

- 16.1 Substitution of sail numbers must be made by the competitor on-line before 0900 hours Saturday April 21<sup>st</sup>.

#### **17 RADIO COMMUNICATION**

Except in an emergency, a boat shall neither make radio transmissions while racing nor receive radio communications not available to all boats. This restriction also applies to mobile telephones..

#### **18 PRIZES**

Prizes will be given as follows: First, Second, and Third place for classes with 5 or more boats. Sunday Pursuit Race, both Long and Short course finishers will receive a prize for First through Fifth place finish.

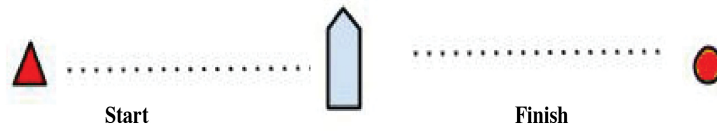
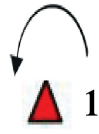
#### **19 DISCLAIMER OF LIABILITY**

Competitors participate in the regatta entirely at their own risk. See rule 4, Decision to Race. The organizing authority will not accept any liability for material damage or personal injury or death sustained in conjunction with or prior to, during, or after the regatta.

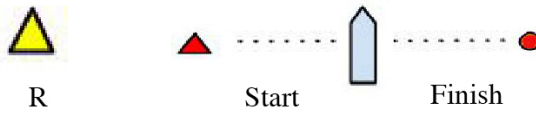
# Attachment A Outside Course

All marks are round and left to port.

- 1 S-1-3-1-F
- 2 S-2-3-2-F
- 3 S-1-3-1-3-1-F
- 4 S-2-3-2-3-2-F
- 5 S-1-3-2-F
- 6 S-1-3-1-3-2-F



Attachment B  
Inside Course



Courses:

1-Start-W-L-Finish

2-Start-W-R-L-Finish

3-Start-W-L-W-L-Finish

4-Start-W-R-L-W-L-Finish

All marks are rounding and to be left to port.

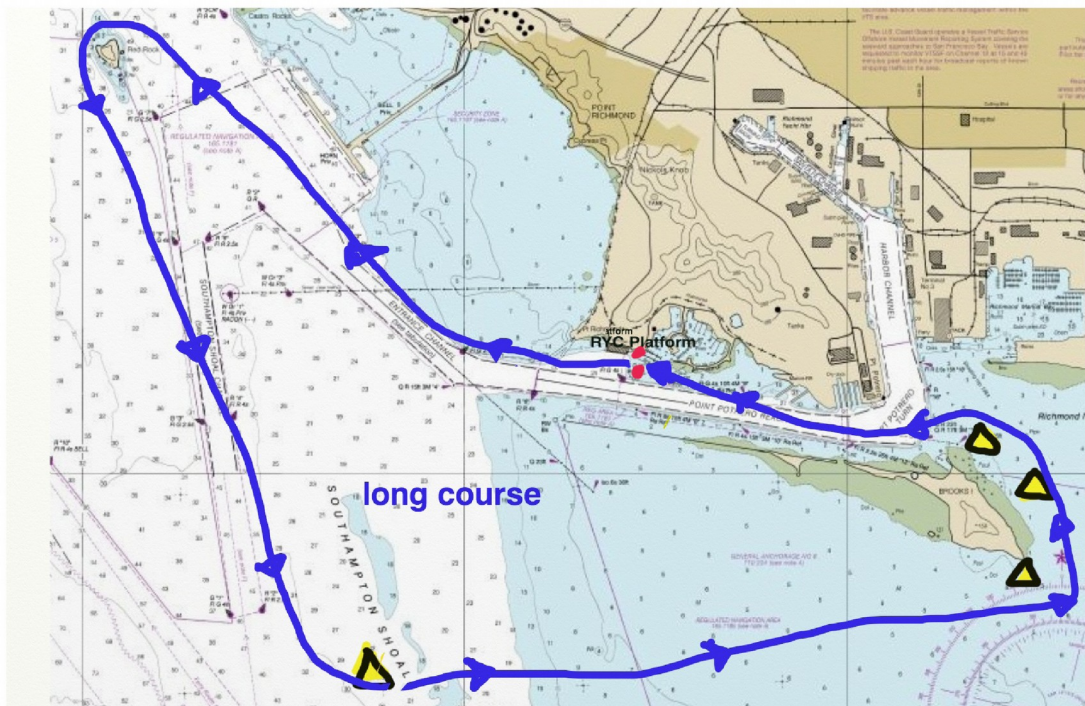


## Attachment E & F Big Dinghy Regatta

**Long Course:** Start - Sail west out Potrero Channel - Red Rock - Brooks Island - Potrero Channel - Brooks Island - Finish. All marks to port.

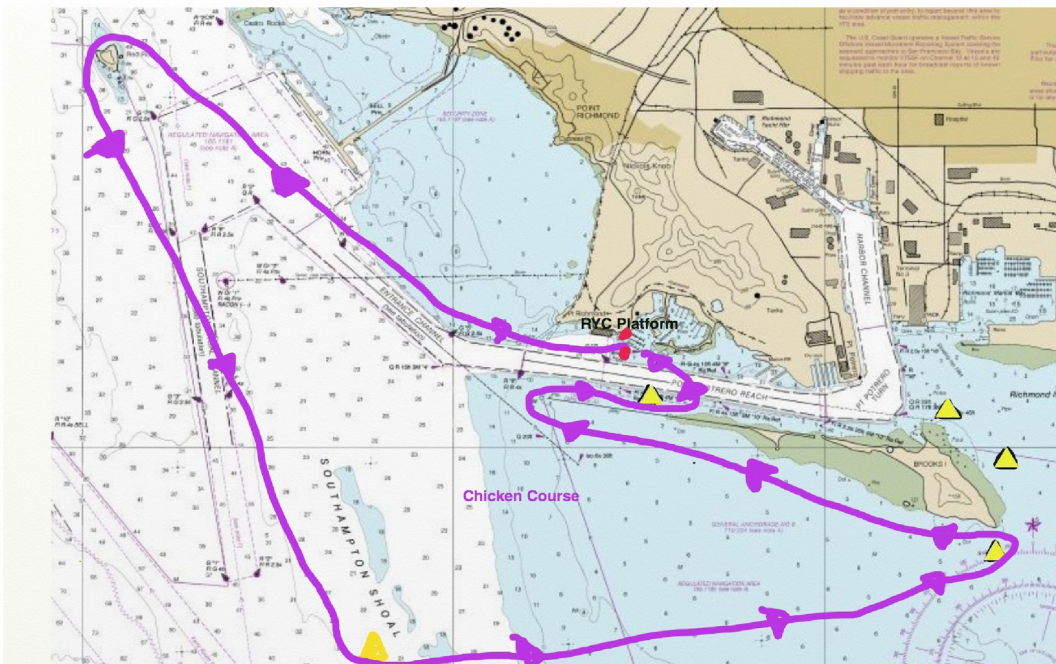
**Chicken Course:** Start - Sail west out Potrero Channel - Red Rock (port) - Brooks Island (port) - Bob Klein (port) - #1 Yellow mark @North East end of Brooks Island (port)- Potrero Channel Breakwater (starboard),- #2 yellow mark (east of finish line) (port)-Finish

**Short Course:** Start- Sail West out Potrero Channel-Brooks Island - Finish. All marks to port.



# Attachment E & F Big Dinghy Regatta

Chicken Course:



Short Course:

