



# KO Sailing MUSTO Shoe Regatta

May 19-20, 2018

## Lakewood Yacht Club



2322 Lakewood Yacht Club Drive, Seabrook, TX 77586

## Organizing Authority: Bay Access

(281) 474-2511 <http://www.lakewoodyachtclub.com>

## Sailing Instructions

*The notation '[DP]' in a rule in the SI means that the penalty for a breach of that rule may, at the discretion of the protest committee, be less than disqualification.*

### 1. RULES

- 1.1. The regatta will be governed by the rules as defined in The Racing Rules of Sailing.
- 1.2. The following prescriptions of the United States national authority will not apply: 63.2
- 1.3.
  - 1.3.1. The Performance Handicap Racing Fleet of Galveston Bay Ratings will apply to Handicap monohull fleets.
  - 1.3.2. The Texas Offshore Multihull Association Ratings will apply to Handicap Multihull fleets.
- 1.4. Racing rules will be changed as follows:
  - 1.4.1. SI 4.2 changes RRS Race Signal AP.
  - 1.4.2. SI 8.4 changes RRS 33.
  - 1.4.3. SI 11.4 changes RRS A4 and A5.
  - 1.4.4. SI 14.1 changes RRS 44.1 and 64.1(a).
  - 1.4.5. SI 14.2 changes RRS 44.1 for cruising class(es)
  - 1.4.6. SI 15.1 changes RRS 62.1(a).
  - 1.4.7. SI 15.2 changes RRS 35, A4 and A5
  - 1.4.8. SI 16.1 changes RRS T1(b)
  - 1.4.9. SI 16.7 changes RRS 62.2.
  - 1.4.10. SI 17.1 changes RRS A2.
- 1.5. N/A
- 1.6. N/A

## **2. NOTICES TO COMPETITORS**

Notices to competitors will be posted on the official notice board located in the vicinity of the west end of the pool at Lakewood Yacht Club.

As a courtesy, notices may also be posted online on the Regatta Network page, but failure to post a notice online will not be grounds for redress.

## **3. CHANGES TO SAILING INSTRUCTIONS**

3.1. Any change to the sailing instructions will be posted before 0800 on the day it will take effect, except that any change to the schedule of races will be posted by 2030 on the day before it will take effect.

3.2. Oral changes to the sailing instructions may be given on the water by hail on the appropriate VHF channel in accordance with RRS 90.2(c).

## **4. SIGNALS MADE ASHORE**

4.1. Signals made ashore will be displayed on the yardarm at Lakewood Yacht Club south of the main clubhouse.

4.2. When flag AP is displayed ashore, "1 minute" is replaced with "not less than 60 minutes" in the race signal AP.

## **5. SCHEDULE OF RACES**

5.1. Dates of racing: May 19 and 20, 2018 for all lines.

5.2. Number of races: For each line, as many races as practical will be run for each class.

5.3. The scheduled time for the warning signal for the first race each day will be no earlier than 1000 for all lines.

5.4. N/A

5.5. On the last scheduled day of racing no warning signal will be made after 1400.

5.6. Flag A displayed, with no sound, while boats are finishing means "No more racing today."

## **6. CLASS FLAGS AND LINE ASSIGNMENTS**

Class line assignments and class flags are identified and designated in Attachment 1.

## **7. RACING AREA**

7.1. The general racing area will be Galveston Bay between Clear Creek Channel Marker #1, the Houston Ship Channel, Red Bluff and Eagle Point in San Leon.

7.2. There will be three race committee lines located as follows:

7.2.1. LINE A ("Small" boat line): The racing area will be northeast of the Clear Creek Channel Marker #1.

7.2.2. LINE B: ("Big" boat line and distance line) The racing area will be Southeast of the Clear Creek Channel Marker #1.

## 8. THE COURSES

- 8.1. LINE A: The diagrams in Attachment 2 show the courses, including the approximate angles between legs; the order in which marks are to be passed; and the side on which each mark is to be left.
- 8.2. LINE B Windward/Leeward courses: The diagrams in Attachment 3 show the courses, including the approximate angles between legs; the order in which each mark is to be left.
- 8.3. LINE B Distance courses: Classes will sail a course selected from the "Distance Courses" listed in Attachment 4.
- 8.3.1. Mark 1 for the Distance courses will be placed between 1 and 1.5 NM to windward (+/-20 degrees) of the signal vessel. Depending on the wind direction, the fleet(s) will round this mark to port or starboard, and then continue to mark #5. On return from mark #5, the fleet will again round mark 1 and sail the final leg to finish.
- 8.3.2. The Race Committee will record the positions of the signal boat and Mark #1 for use in computing the total race course distance. This total distance will be posted on the official notice board after racing is completed for the day.
- 8.4. For Distance Courses only, the legs of the course will not be changed after the preparatory signal. This changes RRS 33.

## 9. MARKS

### 9.1. LINE A

- 9.1.1. Marks 1, 2P and 2S are **yellow** tetrahedrons. Mark 1A, will be an orange or red buoy.
- 9.1.2. Course changes for mark 1 made in accordance with RRS 33 will replace the yellow tetrahedron with an **orange** tetrahedron. Course changes for the Marks 2P and 2S will continue to use yellow tetrahedrons.

### 9.2. LINE B Windward/Leeward courses

- 9.2.1. Marks 1, 2P and 2S are **orange** tetrahedrons. Mark 1A, will be an orange or red buoy.
- 9.2.2. Course changes for mark 1 made in accordance with RRS 33 will replace the orange tetrahedron with a **yellow** tetrahedron. Course changes for the Marks 2P and 2S will continue to use orange tetrahedrons.

### 9.3. LINE B Distance courses

9.3.1. Mark 1 will be a **white** tetrahedron. The remaining marks will be fixed marks as designated in Attachment 4.

9.4. The starting and finishing marks will be the race committee signal vessel and orange or red buoys. SI 11.2 will describe the starting lines and SI 13 the finishing lines.

## 10. AREAS THAT ARE OBSTRUCTIONS

The following areas are designated as obstructions:

10.1. For all Lines, the Houston Ship Channel is designated as an obstruction.

## 11. THE START

11.1. Races will be started by using RRS 26.

11.2. The starting line will be between a staff displaying an **orange** flag on the starting mark at the starboard end and the course side of the port-end starting mark.

11.3. Boats whose warning signal has not been made shall avoid the starting area during the starting sequence for other races. [DP]

11.4. A boat that does not start within 10 minutes after her starting signal will be scored Did Not Start without a hearing. This changes RRS A4 and A5.

11.5. N/A

## 12. CHANGE OF THE NEXT LEG OF THE COURSE

12.1. To change the next leg of the course, the race committee will lay a new mark (or move the gate or finishing line) and remove the original mark as soon as practicable. When in a subsequent change a new mark is replaced, it will be replaced by an original mark.

## 13. THE FINISH

13.1. All lines: The finishing line will be between a staff displaying a **blue** flag on the finishing mark at the starboard end and the course side of the port end finishing mark.

## 14. PENALTY SYSTEM

14.1. Touching an anchored Committee Vessel

14.1.1. The Penalty for violating RRS 31 by touching an anchored Race Committee vessel shall be to retire, and no exoneration is available. This modifies RRS 44.1 and 64.1(a).

14.1.2. The penalty for violating a rule of Part 2 with the result that another boat touches an anchored Race Committee vessel, shall be for the offending boat to retire.

14.1.3. For purposes of SIs 14.1.1 and 14.1.2, touching a float and its line trailing from an anchored Race Committee vessel will not be treated

as touching an anchored Race Committee vessel, but will be treated as touching a mark in violation of RRS 31 and penalties and exoneration will be controlled by RRS 44.1 and 64.1.

14.2. For cruising class(es) RRS 44.1 is changed so that the Two-Turns Penalty is replaced by the One-Turn Penalty.

## 15. TIME LIMITS AND TARGET TIMES

15.1. Time limits and target times are as follows:

<i>Line</i>	<i>Time limit</i>	<i>Mark 1 time limit</i>	<i>Target time</i>
<i>A</i>	<i>2 hr</i>	<i>45 min</i>	<i>45-50min</i>
<i>B (W/L)</i>	<i>2 hr</i>	<i>45 min</i>	<i>45-50min</i>
<i>B (Distance)</i>	<i>4 hr</i>	<i>2 hr</i>	<i>2.5 hr</i>

If no boat has passed Mark 1 within the Mark 1 time limit the race will be abandoned. Failure to meet the target time will not be grounds for redress. This changes RRS 62.1(a).

15.2. Windward/Leeward courses: Boats failing to finish within 30 minutes after the first boat sails the course and finishes will be scored Did Not Finish without a hearing. This changes RRS 35, A4 and A5.

15.3. Distance courses: Boats failing to finish within 1 hour after the first boat sails the course and finishes will be scored Did Not Finish without a hearing. This changes RRS 35, A4 and A5.

## 16. PROTESTS AND REQUESTS FOR REDRESS

16.1. The protest and redress procedures for this regatta will comply with the basic elements of RRS Appendix T. Appendix T1(b) is modified to read: "A Post-Race Penalty is a 20% Scoring Penalty calculated as stated in Rule 44.3 (c) if taken before the protest time limit expires. Otherwise, a Post-Race Penalty is a 30% Scoring Penalty calculated as stated in rule 44.3 (c). However, rule 44.1(a) applies.

16.2. Protest forms are available in the LYC Clubhouse Office. Protests and requests for redress or reopening shall be delivered there within the appropriate time limit.

16.3. For each line, the protest time limit is sixty (60) minutes after the Race Committee Signal Boat for that Line returns to the Lakewood Inner Harbor. This time will be posted on the official notice board. In the event the Race Committee Signal Boat does not return to the harbor, the protest time limit will begin one hour after notice of that fact is posted on the official notice board.

- 16.4. Notices of scheduled hearing times and locations will be posted within thirty (30) minutes of the expiration of the protest time limit to inform competitors of hearings in which they are parties or named as witnesses. Hearings are scheduled to be held in the Commodore's Room, located up the stairs from the clubhouse foyer, beginning at the time posted.
- 16.5. Notices of protests by the race committee or protest committee will be posted to inform boats under RRS 61.1(b).
- 16.6. N/A
- 16.7. On the last scheduled day of racing a request for redress based on a protest committee decision shall be delivered no later than 30 minutes after the decision was posted. This changes RRS 62.2.

## **17. SCORING**

- 17.1. The Low Point Scoring System of Appendix A will apply. Each boat's total score shall be the sum of her scores for all races. No score will be excluded. This modifies RRS A2.
- 17.2. One race is required to be completed to constitute a series.
- 17.3. Boats in the PHRF, TOMA and Cruising Classes will be scored using time-on-distance (TOD) scoring.

## **18. SAFETY REGULATIONS**

- 18.1. Check-In: Before the Warning Signal for the race, a boat shall check-in with the Race Committee on the water by sailing past the stern of the anchored Race Committee signal vessel on starboard tack and hailing the boat's name, or sail number, until acknowledged by the Race Committee. Boats shall not check in via VHF Radio. Failure to check in is not subject to protest by another boat. [DP]
- 18.2. At each boat's check-in, every person on board shall be visible on deck wearing or holding a personal floatation device (PFD). [DP]
- 18.3. A boat that retires from a race shall notify the race committee as soon as possible, or if not possible, contact the LYC office at 281-474-2511. [DP]

**19. N/A**

**20. N/A**

**21. N/A**

**22. N/A**

**23. N/A**

**24. N/A**

**25. N/A**

## **26. DIVING EQUIPMENT AND PLASTIC POOLS**

Underwater breathing apparatus and plastic pools or their equivalent shall not be used around keelboats between the preparatory signal of the first race and the end of the regatta. [DP]

## **27. RADIO COMMUNICATION**

The Race Committee will monitor and utilize the following VHF channels to communicate with racers:

- a) VHF Channel 69 on LINE A
- b) VHF Channel 72 on LINE B

## **28. PRIZES**

28.1. Prizes will be given as follows:

- First and second place for classes with 4 to 5 boats
- First, second and third place for classes with 6 to 8 boats
- First, second, third and fourth place to classes with more than 8 boats.

28.2. Additional trophies may be awarded at the discretion of the Race Committee.

28.3. The name of the winner of the most competitive spinnaker class sailing windward/ leeward courses as determined by the Race Committee will be added to the Shoe Regatta Challenge Cup Wheel perpetual trophy.

## **29. DISCLAIMER OF LIABILITY**

Competitors participate in the regatta entirely at their own risk. See RRS 4, Decision to Race. The organizing authority will not accept any liability for material damage or personal injury or death sustained in conjunction with or prior to, during, or after the regatta.

## **30. INSURANCE**

Each participating boat shall be insured with valid third-party liability insurance with minimum coverage of \$300,000 per incident or the equivalent.

## Attachment 1

### LINE ASSIGNMENTS, CLASS FLAG and STARTING SEQUENCE FOR THE FIRST RACE OF EACH DAY

**The starting order may change for subsequent races**

#### **LINE A – “Small Boat” Windward/Leeward**

##### **Signal Boat: “At Last”**

<u>CLASSES</u>	<u>FLAG</u>
Pulse 600	Yellow
J/70	J/70 Class Flag
J/22	J/22 Class Flag

#### **LINE B – “Large Boat” Windward/Leeward, Distance**

##### **Signal Boat: “Coral Caye”**

<u>CLASSES</u>	<u>FLAG</u>
Cruising Classic Canvas	Green
PHRF Non-Spin distance	Pink
PHRF Spin Distance	Brown
J/105	J/105 Class Flag
PHRF Spin W/L	Purple



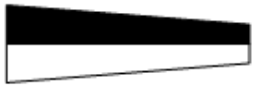
# Attachment 2 LINE A ('Small' boat) Courses



Course 2: Start-1-1a-Finish



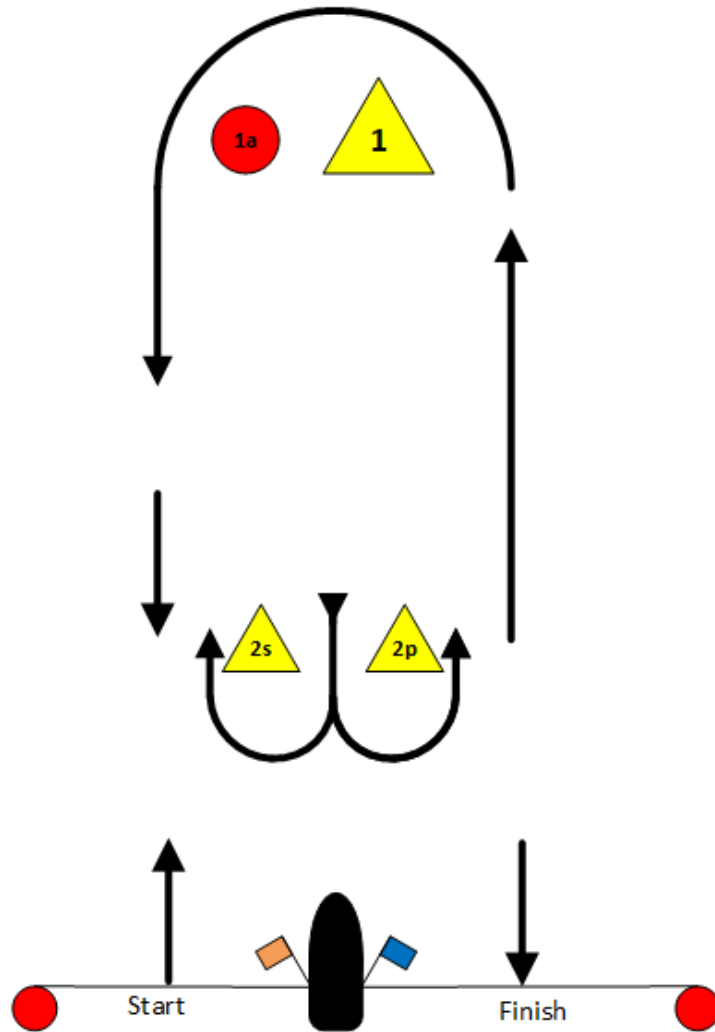
Course 4: Start-1-1a-2p(s)-1-1a-Finish



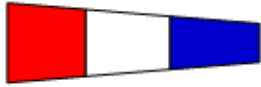
Course 6: Start-1-1a-2p(s)-1-1a-2p(s)-1-1a-Finish



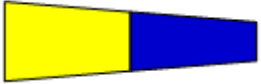
Change mark Color



# Attachment 2 LINE A ('Small' boat) Courses



Course 3: Start-1-1a-2p(s)-Finish



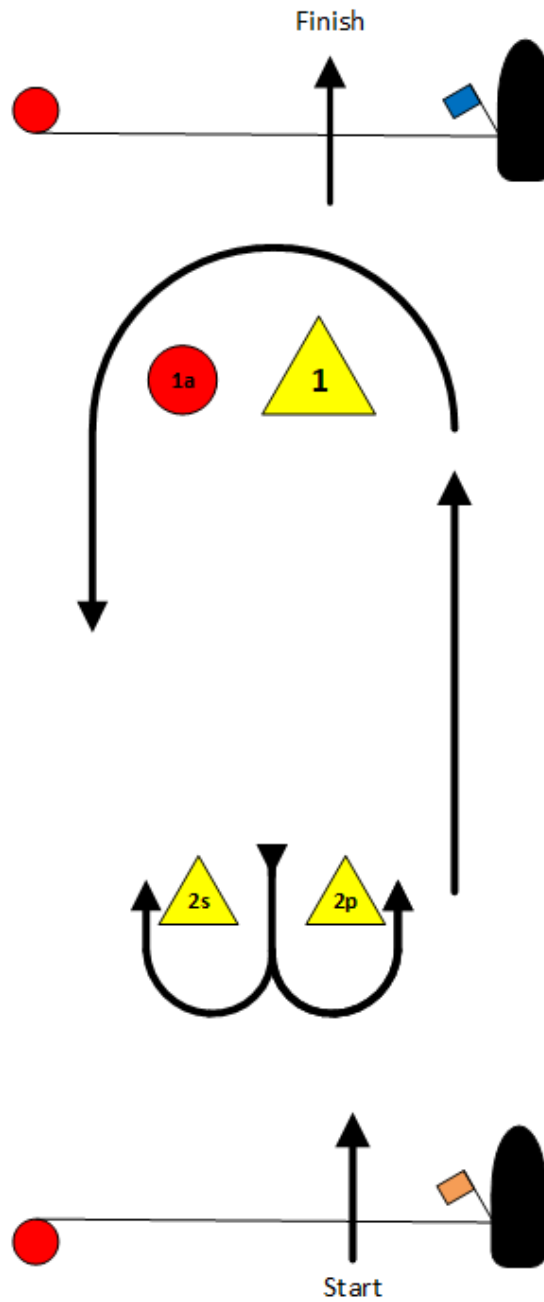
Course 5: Start-1-1a-2p(s)-1-1a-2p(s)-Finish



Change mark Color



Course 7: Start-1-1a-2p(s)-1-1a-2p(s)-1-1a-2p(s)-Finish



# Attachment 3 LINE B 'Large' boat W/L Courses



Course 2: Start-1-1a-Finish



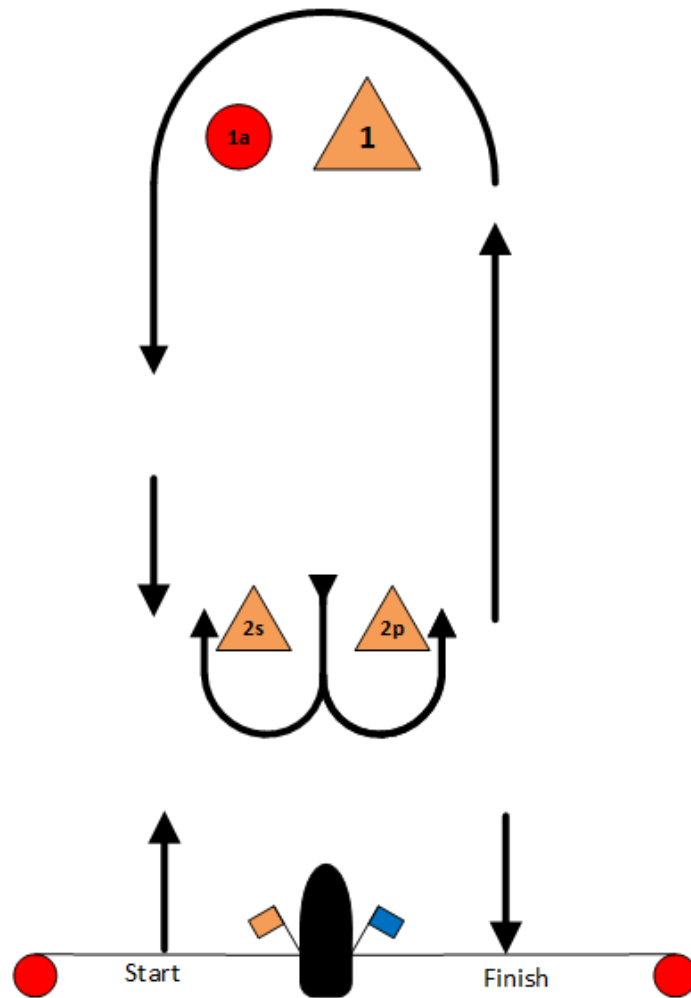
Course 4: Start-1-1a-2p(s)-1-1a-Finish



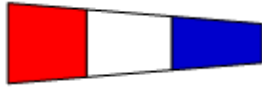
Course 6: Start-1-1a-2p(s)-1-1a-2p(s)-1-1a-Finish



Change mark Color



# Attachment 3 LINE B 'Large' boat W/L Courses



Course 3: Start-1-1a-2p(s)-Finish



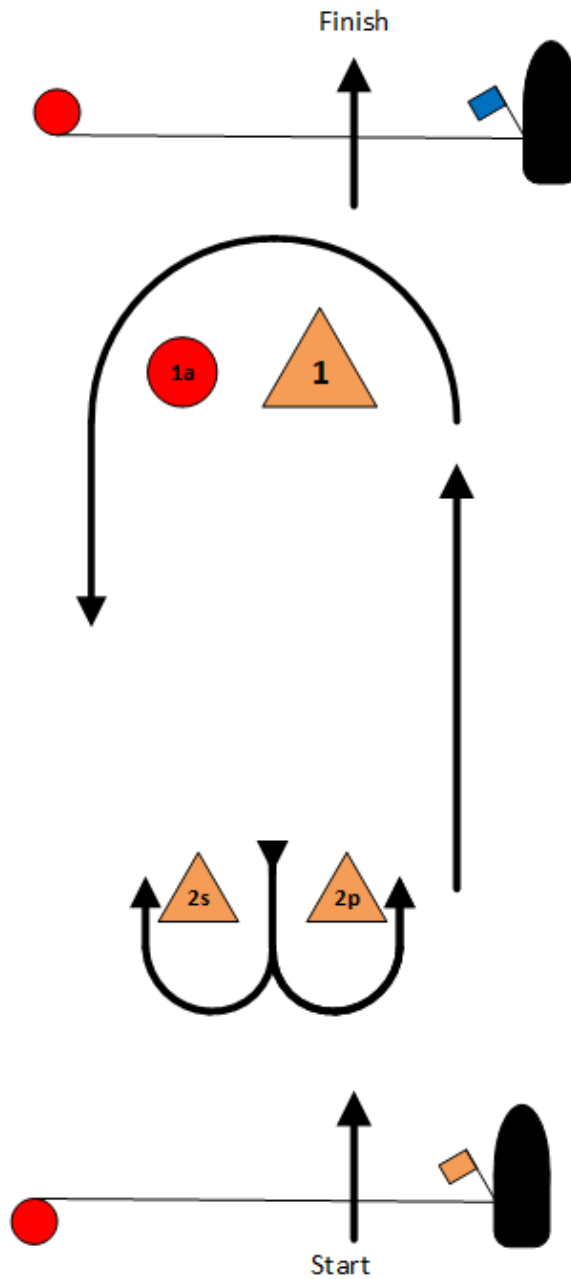
Course 5: Start-1-1a-2p(s)-1-1a-2p(s)-Finish



Change mark Color

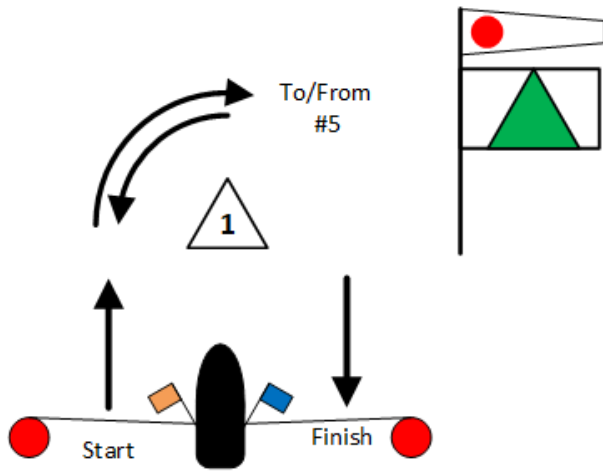


Course 7: Start-1-1a-2p(s)-1-1a-2p(s)-1-1a-2p(s)-Finish

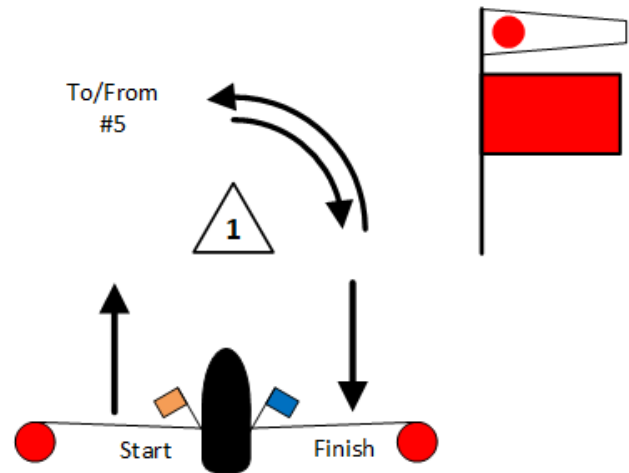


# Attachment 4 LINE B Distance Courses

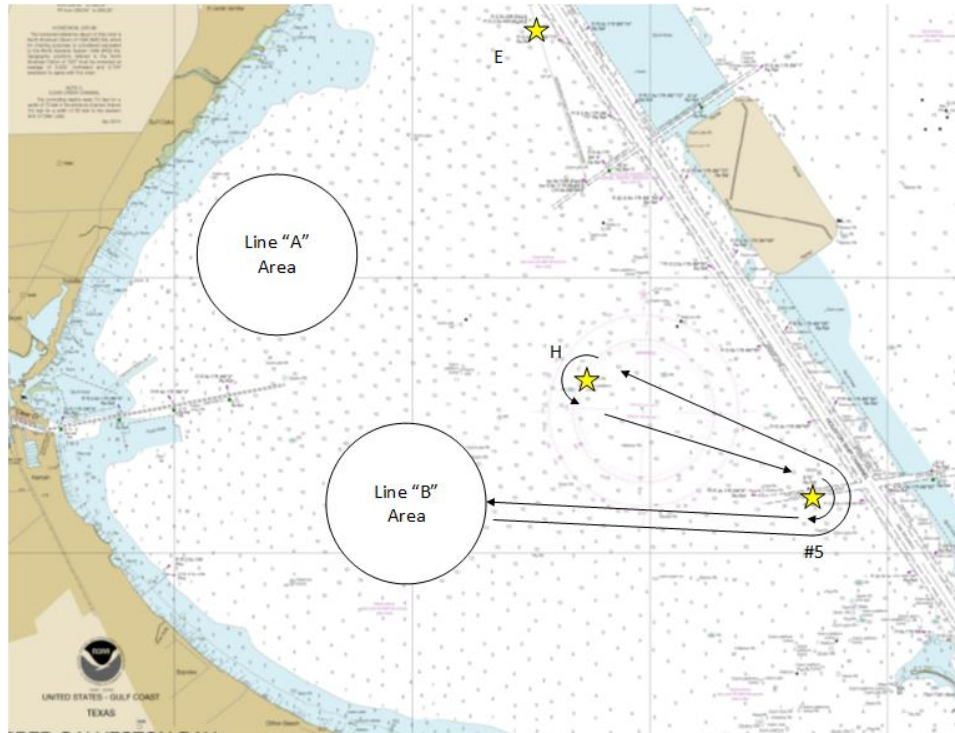
## Course 1-Green



## Course 1-Red

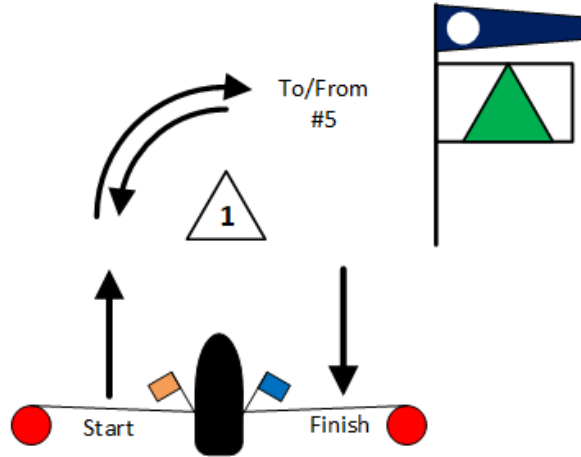


Name	Description	Approximate Lat	Approximate Lon	Approx. BRG	Dst. (Nm)
Start	Signal Boat to Stbd.				
1	White tetrahedron				1-1.5
South Cut #5	South Cut #5 to Port	29°32.410 N	094°54.655 W	071°	2.53
GB H	H Mark to Port	29°33.255 N	094°56.542 W	297°	1.85
South Cut #5	South Cut #5 to Stbd.	29°32.410 N	094°54.655 W	117°	1.85
1	White tetrahedron				1-1.5
Finish	Signal Boat to Port				

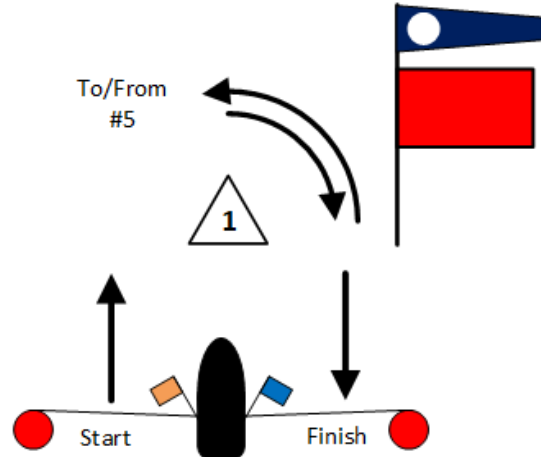


# Attachment 4 LINE B Distance Courses

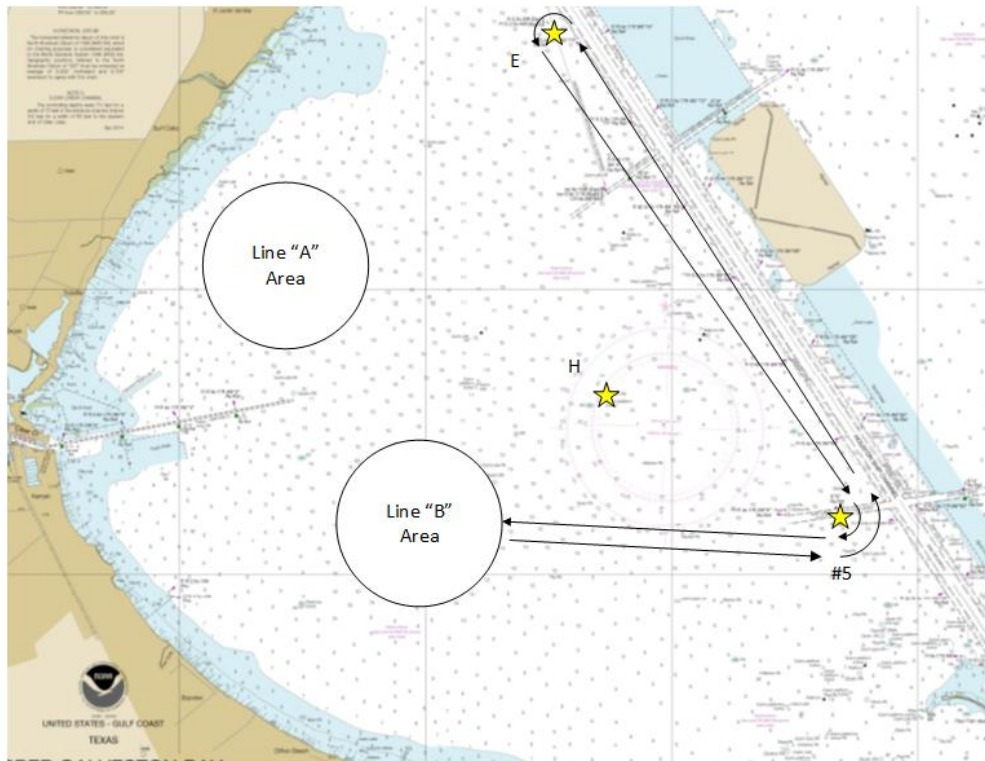
## Course 2-Green



## Course 2-Red

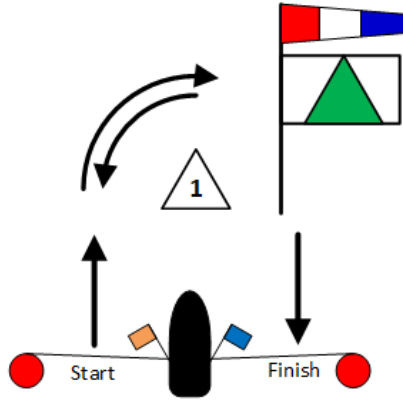


Name	Description	Approximate Lat	Approximate Lon	Approx. BRG	Dst. (Nm)
Start	Signal Boat to Stbd.				
1	White tetrahedron				
South Cut #5	South Cut #5 to Port	29°32.410 N	094°54.655 W		
Low Range	Low Range to Port	29°35.780 N	094°56.940 W	329°	3.91
South Cut #5	South Cut #5 to Stbd.	29°32.410 N	094°54.655 W	149°	3.91
1	White tetrahedron				
Finish	Signal Boat to Port				

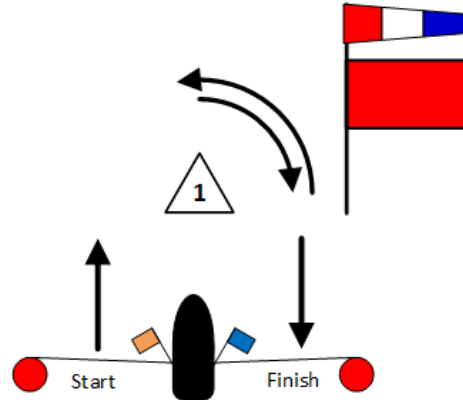


# Attachment 4 LINE B Distance Courses

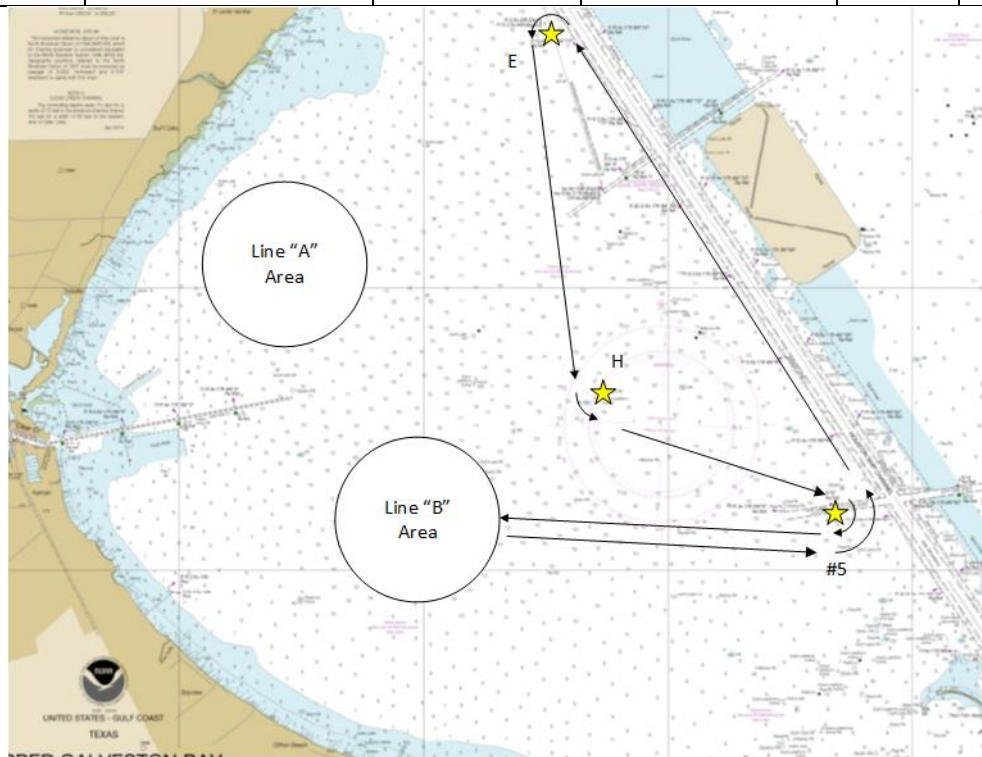
## Course 3-Green



## Course 3-Red



Name	Description	Approx. Lat	Approx. Lon	Approx. BRG	Dst.(Nm)
Start	Signal Boat to Stbd.				
1	White tetrahedron				1-1.5
South Cut #5	South Cut #5 to Port	29°32.410 N	094°54.655 W	071°	2.53
GBCA H	H Mark to Stbd.	29°33.255 N	094°56.542 W	297°	1.85
GBCA E	Low Range to Stbd.	29°35.780 N	094°56.940 W	352°	2.55
South Cut #5	South Cut #5 to Stbd.	29°32.410 N	094°54.655 W	149°	3.91
1	White tetrahedron				1-1.5
Finish	Signal Boat to Port				



Thank you to our valuable sponsors!

