

## Attachment 4 LINE B Distance Courses



**KO Sailing MUSTO Shoe Regatta**

May 19-20, 2018

**Lakewood Yacht Club**



2322 Lakewood Yacht Club Drive, Seabrook, TX 77586

**Organizing Authority: Bay Access**

(281) 474-2511 <http://www.lakewoodyachtclub.com>

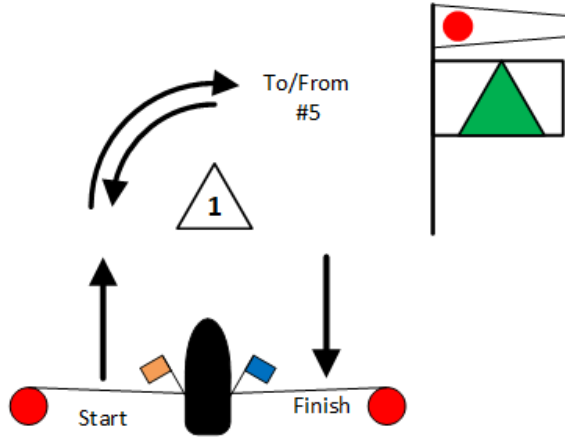
**Sailing Instructions**

**Amendment #2**

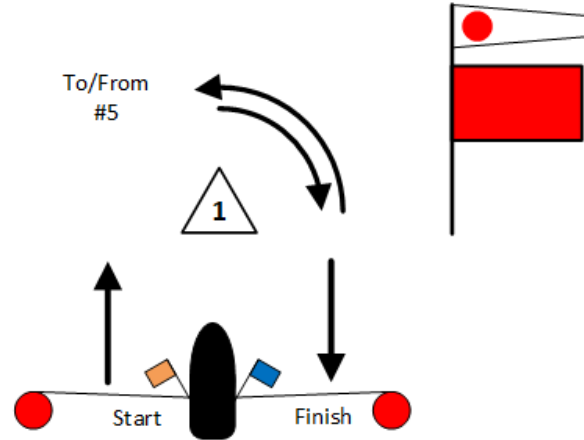
**Correct Attachment #4 as shown**

# Attachment 4 LINE B Distance Courses

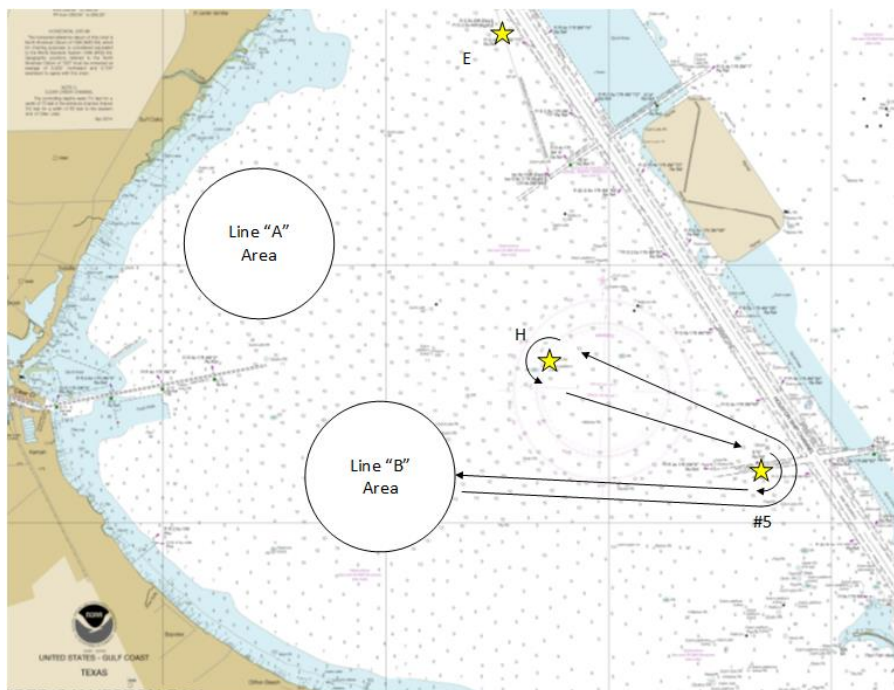
## Course 1-Green



## Course 1-Red

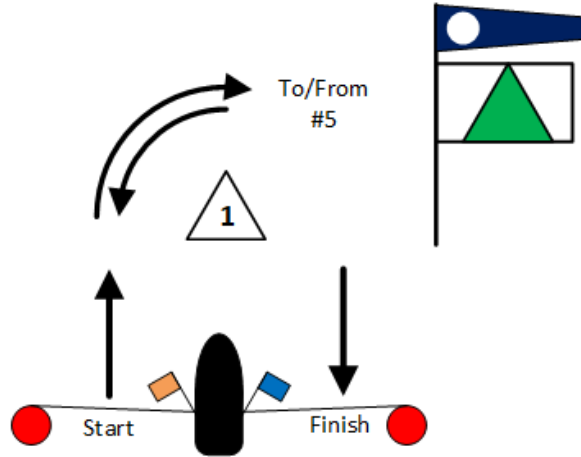


Name	Description	Approximate Lat	Approximate Lon	Approx. BRG	Dst. (Nm)
Start	Signal Boat to Stbd.				
1	White tet				1-1.5
South Cut #5	South Cut #5 to Port	29°32.410 N	094°54.655 W		
GB H	H Mark to Port	29°33.255 N	094°56.542 W	300°	1.85
South Cut #5	South Cut #5 to Stbd.	29°32.410 N	094°54.655 W	120°	1.85
1	White tet ( <b>Opposite</b> )				
Finish	Signal Boat to <b>Stbd</b>				1-1.5

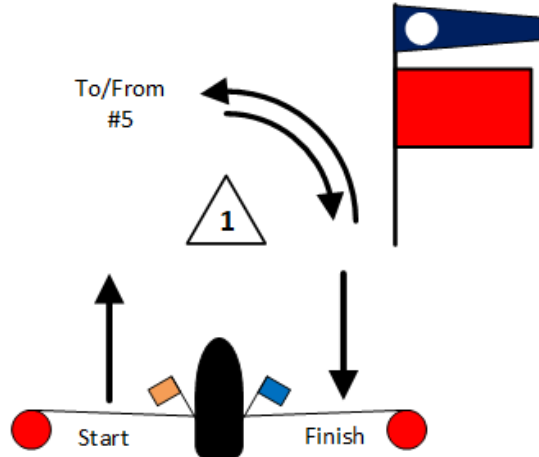


# Attachment 4 LINE B Distance Courses

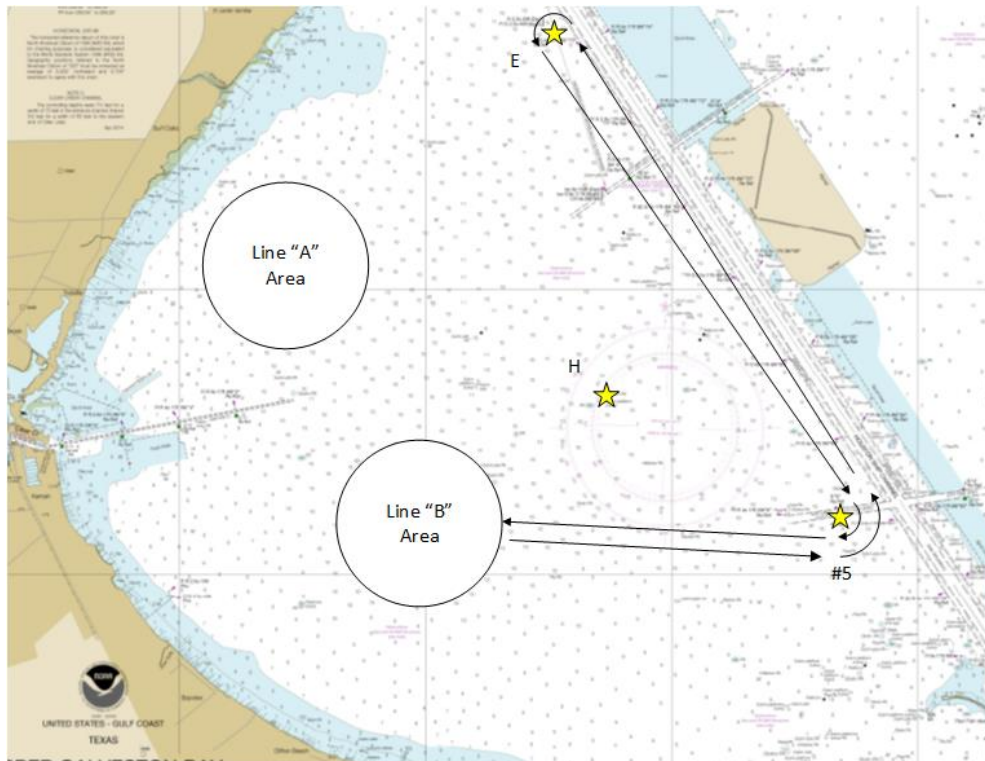
## Course 2-Green



## Course 2-Red

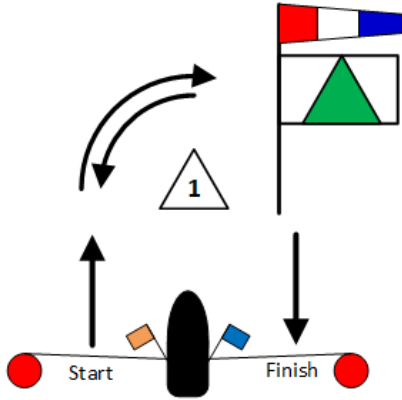


Name	Description	Approximate Lat	Approximate Lon	Approx. BRG	Dst. (Nm)
Start	Signal Boat to Stbd.				
1	White tetrahedron				
South Cut #5	South Cut #5 to Port	29°32.410 N	094°54.655 W		
Low Range	Low Range to Port	29°35.780 N	094°56.940 W	330°	3.9
South Cut #5	South Cut #5 to Stbd.	29°32.410 N	094°54.655 W	150°	3.9
1	White tetrahedron				
Finish	Signal Boat to <b>Stbd</b>				

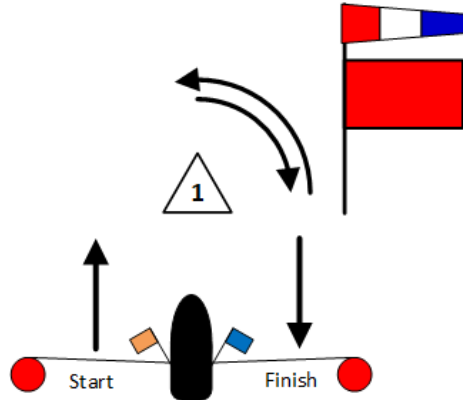


# Attachment 4 LINE B Distance Courses

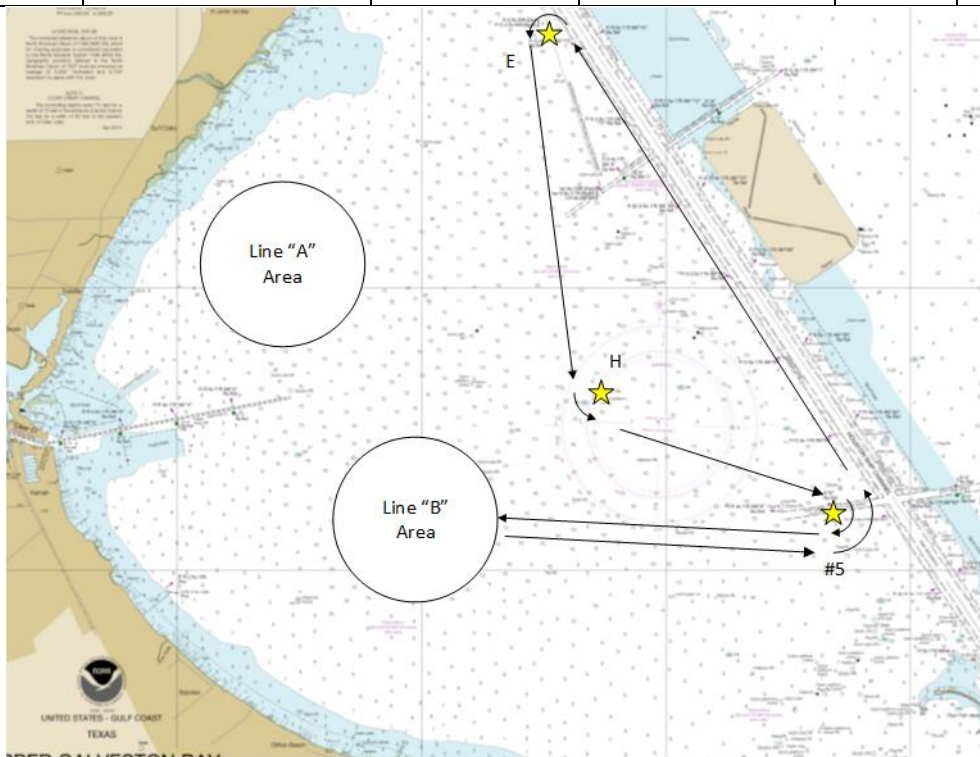
## Course 3-Green



## Course 3-Red



Name	Description	Approx. Lat	Approx. Lon	Approx. BRG	Dst.(Nm)
Start	Signal Boat to Stbd.				
1	White tet				1-1.5
South Cut #5	South Cut #5 to Port	29°32.410 N	094°54.655 W		
<b>Low Range</b>	<b>Low Range to Port.</b>	<b>29°35.780 N</b>	<b>094°56.940 W</b>	<b>330°</b>	<b>3.9</b>
<b>GBCA H</b>	<b>H Mark to Port</b>	<b>29°33.255 N</b>	<b>094°56.542 W</b>	<b>175°</b>	<b>2.5</b>
South Cut #5	South Cut #5 to stbd	29°32.410 N	094°54.655 W	<b>120°</b>	<b>1.85</b>
1	White tet( <b>Opposite</b> )				
Finish	Signal Boat to <b>Stbd</b>				<b>1-1.5</b>



Thank you to our valuable sponsors!

