



SAILING INSTRUCTIONS



Commodore Classic Race

JUNE 3, 2018

HOSTED BY:

Ventura Yacht Club

1755 Spinnaker Drive

Ventura, California 93001

www.venturayachtclub.org

1. RULES:

This race will be governed by the *Racing Rules of Sailing*, the prescriptions of the USSA, the rules of the PHRF of Southern California (except as any of these are altered by these Sailing Instructions), by these Sailing Instructions and by any instructions that may be announced by the Race Committee (RC) from its station. Except for brief breaks not to exceed five minutes in duration, a Staff, Rear, Vice, or Commodore must be at the helm at all times. These breaks may not occur during the starting sequence or within five minutes of rounding a mark or finishing, nor at any time in which a tactical advantage would be gained. The PHRF Marine Industry Racer (MIR) Rule is not in effect for this race.

2. ENTRIES, HANDICAP ADJUSTMENTS:

2.1 Eligible boats may enter by completing registration online at www.venturayachtclub.org. Follow the links (Water>Racing>) to Regatta Network. You are strongly encouraged to register before race day.

2.2 PHRF Area A Random Leg handicaps will be used and PHRF Corinthian Rating Adjustments will be honored.

2.3 Boats in cruising configuration without a PHRF Corinthian Rating Adjustment may request a similar rating adjustment for this race by submitting a Commodore Classic Rating Adjustment Form showing the cruising inventory carried onboard (see Paragraph 8).

2.4 Boats not carrying a spinnaker will be credited with their PHRF Non-Spinnaker Offset as an additional adjustment to their handicap for the race. Boats must declare "Non-Spinnaker" at the skipper's meeting to be scored with their Non-Spinnaker Offset.

2.5 PHRF membership is not required. Boats without a valid handicap will be assigned a temporary handicap for this event by the RC.

3. NOTICES TO COMPETITORS:

Notices to competitors will be posted on the VYC bulletin board in the lower patio.

4. CHANGES IN SAILING INSTRUCTIONS:

Changes in the Sailing Instructions will be posted before 1000 hours on the day they will take effect. Oral instructions from the RC on station on the water will be signaled by display of code flag "L" on the Committee Boat.

5. SCHEDULE OF RACE:

The warning signal for the race is scheduled for 1155 hours on June 3, 2018.



SAILING INSTRUCTIONS



6. CLASSES:

There will be one class. All entries will start together and sail the same course. The class flag for starting will be a Red Flag.

7. FLAGS: Skippers are encouraged to fly their club burgee and appropriate commodore flag.

8. COMMODORE CLASSIC CRUISER RATING ADJUSTMENTS:

These are intended to be identical to PHRF Standard Corinthian Adjustments. For details, see PHRF Appendix F. These adjustments are in increments of seconds per mile applied to the base ratings.

8.1 Propellers

- 8.1.1 Fixed 3-Blade Prop +9
- 8.1.2 Fixed 2-Blade Prop +6

8.2 Anchor Chain

- 8.2.1 At least 100 ft. but less than 200 ft., stored in the bow +3
- 8.2.2 More than 200 ft. +6

8.3 Sail Fabric

- 8.3.1 Dacron Genoa +6
- 8.3.2 Dacron Main +6

8.4 Roller Furling Sails (usable during race)

- 8.4.1 Roller Furling Headsail +6
- 8.4.2 Roller Furling Mainsail – no battens (in mast only) +9
- 8.4.3 Roller Furling Mainsail – with battens (in mast only) +6

8.5 Largest Size Genoa

- 8.5.1 Largest Genoa LP 135% of J +3
- 8.5.2 Largest Genoa LP 110% of J +6

8.6 Spinnaker Tack

- 8.6.1 Spinnaker is tacked to the bow, or to a bow roller +4

(This adjustment is limited to bow rollers that extend no more than 6” in front of the Stem Fitting, and to spinnakers that are not tacked to any kind of sprit or pole, and where this configuration is the only method used to fly a spinnaker on the boat)

8.7 Performance Factor

8.7.1 If a boat’s Performance Factor (PF), as calculated under PHRF Appendix A, is greater than 1.75, then her Commodore Classic Rating will be adjusted according to the following formula: $((PF - 1.75) \times PF \times 40)$



SAILING INSTRUCTIONS



9. THE COURSES:

- 9.1 The courses will be chosen from the 2018 Commodore Classic Course Chart which is part of these Sailing Instructions.
- 9.2 Designation of the course to be sailed will be signaled from the race committee boat before or with the warning signal.
- 9.3 When an oil platform is a mark of the course, its associated mooring buoy(s) will also be considered marks of the course. Such buoys are to be rounded on the same side as the oil platform is to be rounded (i.e., to port or to starboard).

10. CHECKING IN:

Each boat is requested to check-in before the warning signal. The check-in period begins after the RC boat is anchored. A boat may check-in either by passing close by the stern of the committee boat and hailing her sail number until acknowledged by the RC, or by calling the RC on VHF channel 69.

11. THE START:

Starting line S will be between the Ventura Harbor entrance whistle buoy "R2" as the port-side mark and an orange flag or shape mounted on the Committee Boat as the starboard-side mark.

12. RECALLS:

- 12.1 Individual recalls will be signaled in accordance with Racing Rule 29.1 [code flag "X" and 1 sound signal].
- 12.2 General recalls will be signaled in accordance with Racing Rule 29.2 [code flag "first substitute" and 2 sound signals]. A new warning signal will be made one minute after the "first substitute" is lowered.
- 12.3 For individual recalls: after the starting signal, the Race Committee will attempt to hail the sail number(s) of the recalled boat(s) on VHF Channel 69.
- 12.4 The following shall not be grounds for granting redress:
 - a. Failure of a boat to hear the recall hail or broadcast.
 - b. A boat's position in the sequence of hailed numbers or broadcast numbers.
 - c. Failure of the Race Committee to hail or broadcast numbers.

13. THE FINISH:

- 13.1 The finish shall be on a line from the VYC clubhouse balcony to the green light standard (#3) near the southwest end of the detached Ventura Harbor breakwater.
- 13.2 Finishers are requested to notify the RC when approaching the finish line. If the RC is not on station, boats shall record their own finish times. The RC will monitor VHF Channel 69 throughout the race.
- 13.3 Shortly after finishing, it is requested that spinnakers be struck in order to maintain safe maneuverability and legal speed in the harbor.

14. TIME LIMIT:

If any boat finishes before 5pm, the race is valid. If no boat finishes before 5pm, the race is abandoned.



SAILING INSTRUCTIONS



15. RETIREMENT:

A boat that has started and subsequently retires is requested to notify the RC as soon as possible. The RC will monitor VHF channel 69. Club phone number is 805-642-0426.

16. PROTESTS:

Protests shall be written on forms available at the club and shall be filed with the Race Committee within 1 hour of the finish of the protesting boat or within 1 hour after she returns to port if she retires.

17. SCORING:

The Low-Point Scoring System (Appendix A2 of the Racing Rules) will apply.

18. SAFETY AND EQUIPMENT:

All boats must conform to USCG and US Sailing Safety Equipment Requirements (USSER) for a US Sailing Nearshore Race as modified below. USSERs are available online at ussailing.org (click on *Safety*).

18.1 USS SER 2.4.4 is in effect for this race and modified to require lifelines even if they are not uncoated stainless steel.

18.2 USS SER 3.19.1 is modified to allow compasses like the TACK TICK and Velocitek Shift (non GPS) magnetic compasses with mounted brackets as long as they are tethered so the device may not be lost overboard.

18.3 USS SER Rule 3.8.2 is in effect for this race and modified to require a water proof VHF or a VHF with a water proof cover even if it does not have DSC/GPS capability.

18.4 USS SER 3.3.1 is modified to allow running lights that are mounted below deck level (common on 90's and earlier boats).

18.5 A minimum of 2 crew are required.

18.6 If the race committee feels conditions warrant, it shall fly a Y flag, requiring all skippers and crews of racing boats to wear PFDs.

19. NON-SPINNAKER ENTRY DEFINITIONS:

19.1 No spinnakers or spinnaker-like sails such as flashers, cruising 'chutes, MPSs, gennakers, etc. are allowed. All headsails must meet the measurements of Racing Rule 50.4.

19.2 Only one whisker pole may be used at a time and, when in use, shall be attached to the foremost mast. As per PHRF rules, whisker pole maximum length shall not exceed 1.4 X J.

19.3 Use of headsails larger than 155% LP carries a 6 second per mile penalty unless the boat is already handicapped for such larger sail.

19.4 More than one headsail may be carried set, and the headsails need not be attached to the forestay.

20. TROPHIES:

Awards will be presented at the party following the race at Ventura Yacht Club. Skippers, crew and guests are all welcome.

21. INSURANCE:

Each participating boat shall have valid third-party liability insurance.



SAILING INSTRUCTIONS



22. RISK, DISCLAIMER OF LIABILITY, PERSONAL CONDUCT:

- 22.1 Competitors participate in the regatta entirely at their own risk. See RRS Rule 4, Decision to Race. The organizing authority will not accept any liability for material damage or personal injury or death sustained in conjunction with or prior to, during, or after the regatta.
- 22.2 The Skipper/Owner of each boat participating in the regatta shall be responsible for the behavior of each member of the crew of his/her boat both on the water and while ashore. The destruction of property, the breach of reasonable standards of good sportsmanship by any crew member, or any other person associated with the boat, or the failure of any of those persons to comply with any reasonable request of any Race Officer, Regatta Committee member, or their representatives, may result in the disqualification of the boat, and its exclusion from the regatta.
- 22.3 Competitors are expected to conduct themselves in a sportsmanlike manner at all times and to abide by the host club rules.

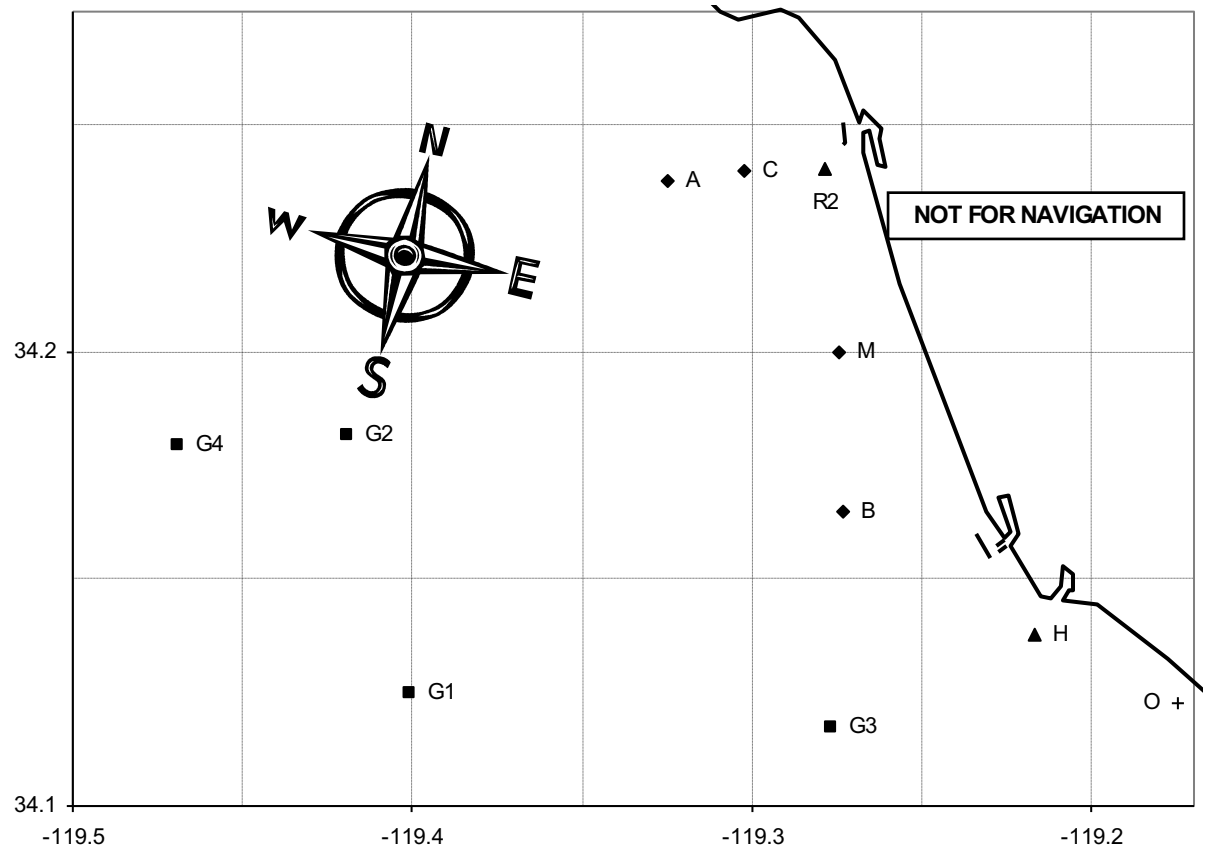


SAILING INSTRUCTIONS



2018 Commodore Classic Race Course Chart

#	Course	Approximate Magnetic Heading To First Mark	Approx. Length
1	S Bs As F	165	12.84
2	S Mp R2s F	161	5.4
3	S Ms As F	161	9.14
4	S Ms G2s F	161	18.37
5	S G3s R2s F	180	15.28
6	S G1s R2s F	220	19.18
7	S G2s F	245	16.46
8	S Ap F	257	5.49
9	S Ap Cp Ap F	257	8.72
10	S Ap R2p Cp F	257	7.55
11	S Ap Mp R2s F	257	9.25
12	S Ap R2p Cp R2p Cp F	257	9.55
13	S Ap Bp R2s F	257	12.95
14	S Ap Mp R2p Ap F	257	14.28
15	S Ap Bp R2p Ap F	257	17.98
16	S Cp F	252	2.37
17	S Cp R2p Cp F	252	4.37
18	S Cp R2p Cp R2p Cp F	252	6.37
19	S Ap Mp R2p Cp F	257	11.18
20	S Cp Mp R2p Cp F	252	8.55
21	S Cp Mp R2s F	252	6.6





SAILING INSTRUCTIONS



	MARKS	APPROXIMATE LOCATION	
A	Fish Sticks spar buoy	L: 34° 14.5'N	Lo: 119° 19.9W
B	"Wes" Mark	L: 34° 09.9'N	Lo: 119° 16.5W
C	Chips spar buoy	L: 34° 14.4'N	Lo: 119° 17.9'W
H	Hue Whistle buoy RW"PH"	L: 34° 08.3'N	Lo: 119° 13.0'W
M	Mandalay spar buoy	L: 34° 12.0'N	Lo: 119° 16.5'W
O	Ormond Buoy	L: 34° 7.4'N	Lo: 119° 10.5'W
R2	Vta Whistle buoy R"2V"	L: 34° 14.4'N	Lo: 119° 16.7'W
S	Start in vicinity of Mark R2; see Sailing Instructions		
F	Finish at Ventura Harbor; see Sailing Instructions		
G1	Platform Gail	L: 34° 07.5'N	Lo: 119° 24.1'W
G2	Platform Gilda	L: 34° 10.9'N	Lo: 119° 25.2'W
G3	Platform Gina	L: 34° 07.0'N	Lo: 119° 16.6'W
G4	Platform Grace	L: 34° 10.8'N	Lo: 119° 28.1'W