



**Waterford Yacht Club Charity  
Regatta Benefiting Sailing Angels  
Foundation Saturday, October 20<sup>th</sup>,  
2018**

**RACE SAILING INSTRUCTIONS**

**ORGANIZING AUTHORITY:** Waterford Yacht Club (WYC), 800 Mariners Drive, Kemah, Texas 77565  
[Waterford Yacht Club website](#)

**1 RULES**

This event will be governed by the “Rules” as defined in The Racing Rules of Sailing (RRS 2017-2020)

**2. ENTRIES**

Sailboat competitors may enter the race by completing the electronic registration online - link to Registration Form of Regatta Network available on the [Waterford Yacht Club website](#). Online registration is extended - must be completed by 6:00 PM Friday, October 19<sup>th</sup>. Competitors will race in the PHRF classes with ratings assigned by the race committee per the PHRF database. This rating will be used to calculate the corrected race start time.

**3. NOTICES TO COMPETITORS**

Notices to Competitors will be posted on Regatta Network WYC Charity Regatta Website and the [Waterford Yacht Club website](#).

**THIS IS A NON-SPINNAKER and SPINNAKER RACE, NON-AUTO  
PILOT, MONO-HULL AND MULTI-HULL EVENT**

**4. CHANGES IN SAILING INSTRUCTIONS & SCHEDULE**

Any change to these sailing instructions or schedule shall be posted on the Regatta Network WYC Charity Regatta website by Friday, October 19<sup>th</sup> 2018.

**5. IDENTIFICATION**

Each sailboat will check in with the start line committee boat prior to the Start on VHF channel 69. Please announce sailboat name and sail number (if available) with check-in.

**6. SIGNALS MADE ASHORE**

There will not be any signals from shore.

## **7. SCHEDULE OF RACE**

The race will be sailed according to the schedule in the Notice of Race, unless changed by the provisions of paragraph 4 of these Sailing Instructions. All times are GPS times.

## **8. RACE AREA**

The race will be sailed around drop or fixed marks in the area bounded by Red Bluff Point, the Houston Ship Channel and Eagle Point.

8.1. The mark layout is shown in the Appendix:

- The Start/Finish line gate will be between a yellow tetrahedron and Race Committee boat anchored approximately 2200 feet due south (180 bearing) of Green Marker #1:
  - **29° 32.748'N, 94° 59.541'W.**
- Mark #1(M52), is the M52 Galveston shellfish boundary marker located approximately:
  - **29° 31.808'N, 94° 55.597'W**
- Mark #2, is the North Boaters Cut (High Range Marker) located approximately:
  - **29° 34.669'N, 94° 56.516'W**

8.2. Sailboats shall not enter the Houston Ship Channel. Houston Ship Channels are designated as obstructions.

## **9. THE COURSE and MARKS**

The course will be sailed from the Start line to Mark #1, thence to Mark #2, and then to the finish line gate. All marks are to be left or rounded to Port. Total distance is approximately 9.79 nautical miles (NM).

## **10. THE START**

10.1 Start/Finish line or gate will be between a yellow tetrahedron (race mark) and flag flown on the stern of Race Committee boat anchored approximately 2200 feet south of green marker #1. The pursuit race start is staggered, based on the sailboat PHRF handicap.

10.2. The planned start time is 12:00 Noon and all competitors will start at their assigned times. The Pursuit Race time limit is **240 minutes = 4 Hours**. Check in starts 11:30 AM by VHF channel 69 calling Race Committee boat.

## **11. RECALLS**

There will be no recalls. In case of a start time dispute the start time recorded by the Race Committee will be the time used.

## **12. CHANGE OF THE POSITION OF THE NEXT MARK, SHORTEN COURSE.**

In case of bad weather conditions, race committee can shorten race: This will be announced from the Race Committee boat on VHF channel 69.

## **13. THE FINISH**

13.1 The finish line gate will be the same as start line gate: between a yellow tetrahedron (race mark) and flag flown on the stern of Race Committee boat anchored approximately 2200 feet south of green marker #1.

**14. TIME LIMIT**

The race time limit is **240 minutes = 4 Hours.**

**15. PENALTIES**

A boat has to take 2 penalty turns referring to RRS 2017-2020 appendix B 44.1 if she has broken one or more rules of Part 2 RRS in an incident while racing. If you foul another boat while *racing*, you must take a penalty turns as soon as possible by doing **two** 360- degree circles, or turning 720 degrees ([Racing Rule 44](#)). While doing your two penalty circles, you must stay clear of all other boats. A sailboat that has taken her Penalty Turns shall notify the Race Committee via VHF channel 69 at the first reasonable opportunity. At that time the skipper shall also inform the Race Committee of the identity of the other boat involved in the incident.

**16. PROTESTS**

- 16.1. Intent to protest shall be signaled in accordance with RRS. The protesting sailboat shall also notify the Race Committee and be acknowledged before leaving the finish area.
- 16.2. A protested boat can clear itself on the water by making penalty turn(s) as in RRS 2017-2020 appendix B 44.
- 16.3. Protests shall be written on forms available at the Waterford Harbor Marina “ice house” and delivered there within two hours following the arrival in the Waterford Harbor Marina of a Race Committee member.
- 16.4. The times and locations of the protest hearings, along with the names of the boats involved will be posted.

**17. SCORING**

If full course is sailed no scoring will be done. By class, the first sailboat to finish is the winner, followed by the next two sailboats for second and third place. If a shortened course (12) has been sailed, time corrections will be made. Please keep track of your finish time as it can get busy on the Race Committee boat.

**18. SAFETY**

- 18.1. Any sailboat that has checked in, and then withdraws before finishing the race, shall notify the Race Committee on **VHF Channel 69** on the water, or, if that is not possible, contact the race Committee via text or phone – PRO or Scorer.
- 18.2. **DISCLAIMER OF LIABILITY:** Competitors participate in the regatta entirely at their own risk. See RRS 4, Decision to Race. The organizing Authority will not accept liability for material damage, personal injury or death sustained in connection with or prior to or after the regatta.
- 18.3. In the event of severe weather conditions the race will be cancelled. Notice of cancellation will be posted on the [Waterford Yacht Club website](#) and Regatta Network WYC Charity Regatta Website at the earliest time possible.

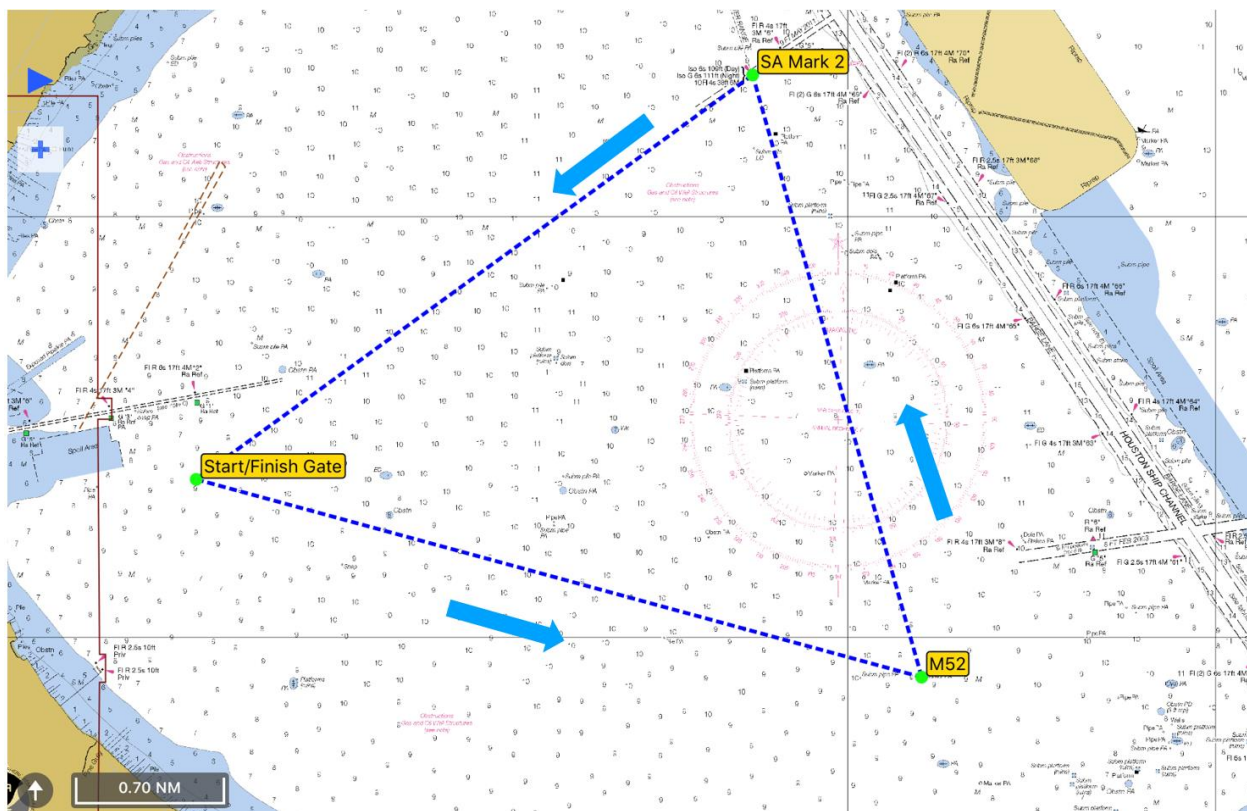
## **19. RADIO COMMUNICATIONS**

- 19.1 A sailboat shall neither make radio transmissions while racing, nor receive special radio communications not available to all yachts. This does not apply to situations that threaten safety of life and/or property.
- 19.2 The Race Committee will monitor **VHF channel 69** for the race and in the case of abandonment of the race.

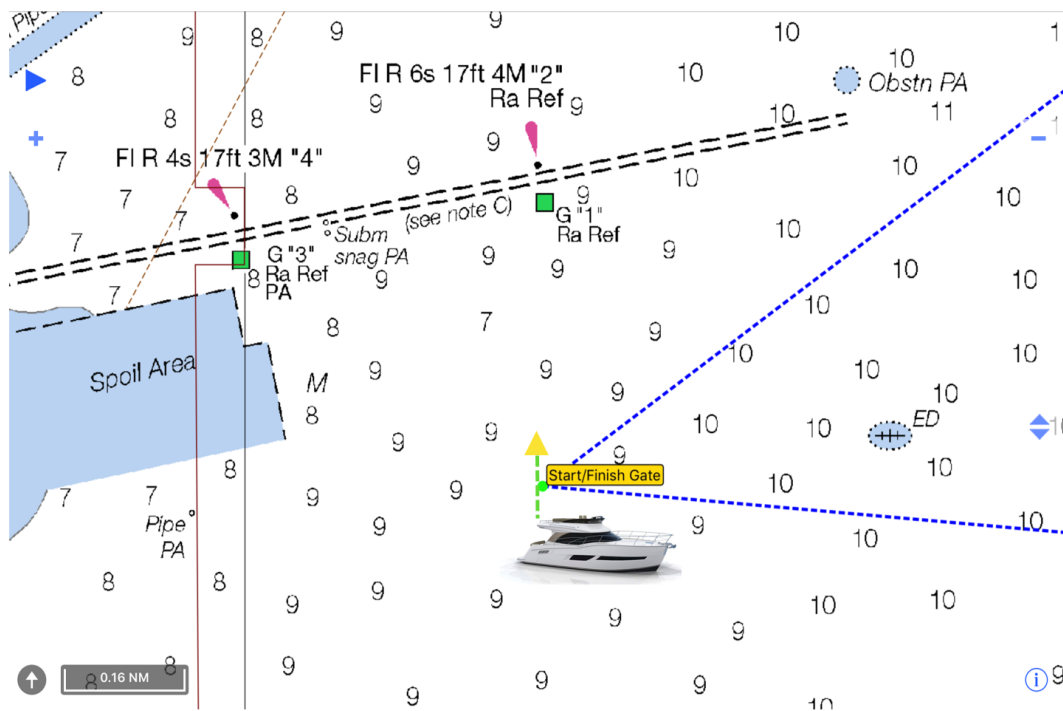
**For more info please call or text:**

Mike Pantoja, Commodore - 214-697-5161 - commodore@waterfordyc.com  
Ellen T. Van London, Vice-Commodore - 281-300-6423 - Ellen@vanlondon.com  
Rafael Brom, Fleet Captain - 713-412-4288 - fleetcaptain@waterfordyc.com  
Peter van Oosten, Principal Race Officer: 832-475-0747 - peter@ramtec-marine.com  
Dennis Stetzel, Committee Boat: 281-216-4086 - dstetzel@comcast.net  
Peter A. Larabee, Scorer: 281-732-7850 - peter.a.larabee@exxonmobil.com  
Greg Green, Protest Committee/Jury: 713-858-4501 - grnggreen@gmail.com  
Doug Catenaci, Protest Committee/Jury: 713-517-4184 - pointofbeginning387@gmail.com  
Trisha Stetzel, Social Director: 281-217-4951 - socialdirector@waterfordyc.com

## ILLUSTRATION OF THE COURSE



## ILLUSTRATION OF THE START / FINISH GATE

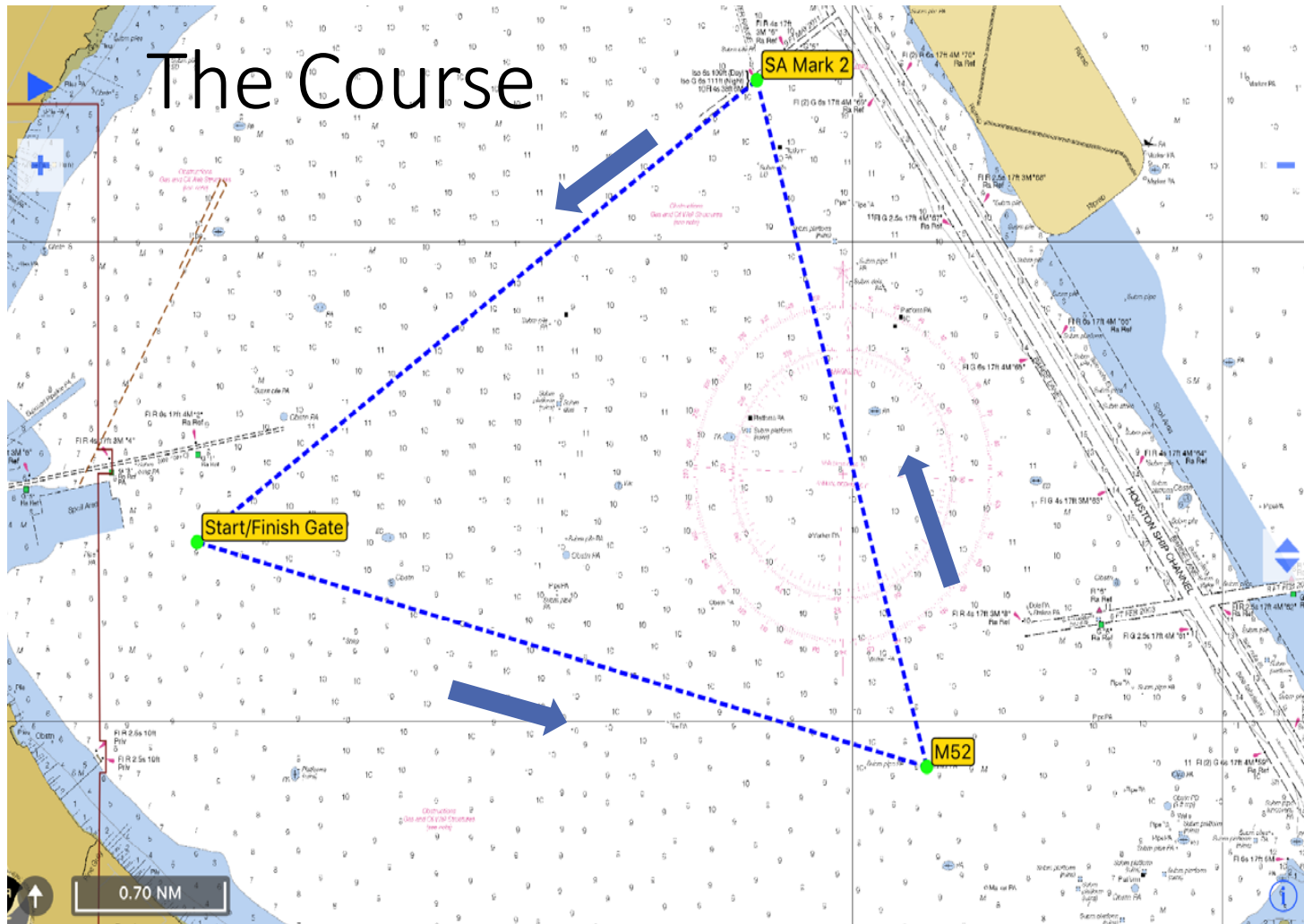


Approximately 2200' South  
of Green Marker #1

Mark	Coordinate	Description
Start / Finish	N 29° 32.748' W 094° 59.541'	Start / Finish Gate Yellow Tetrahedron Committee boat



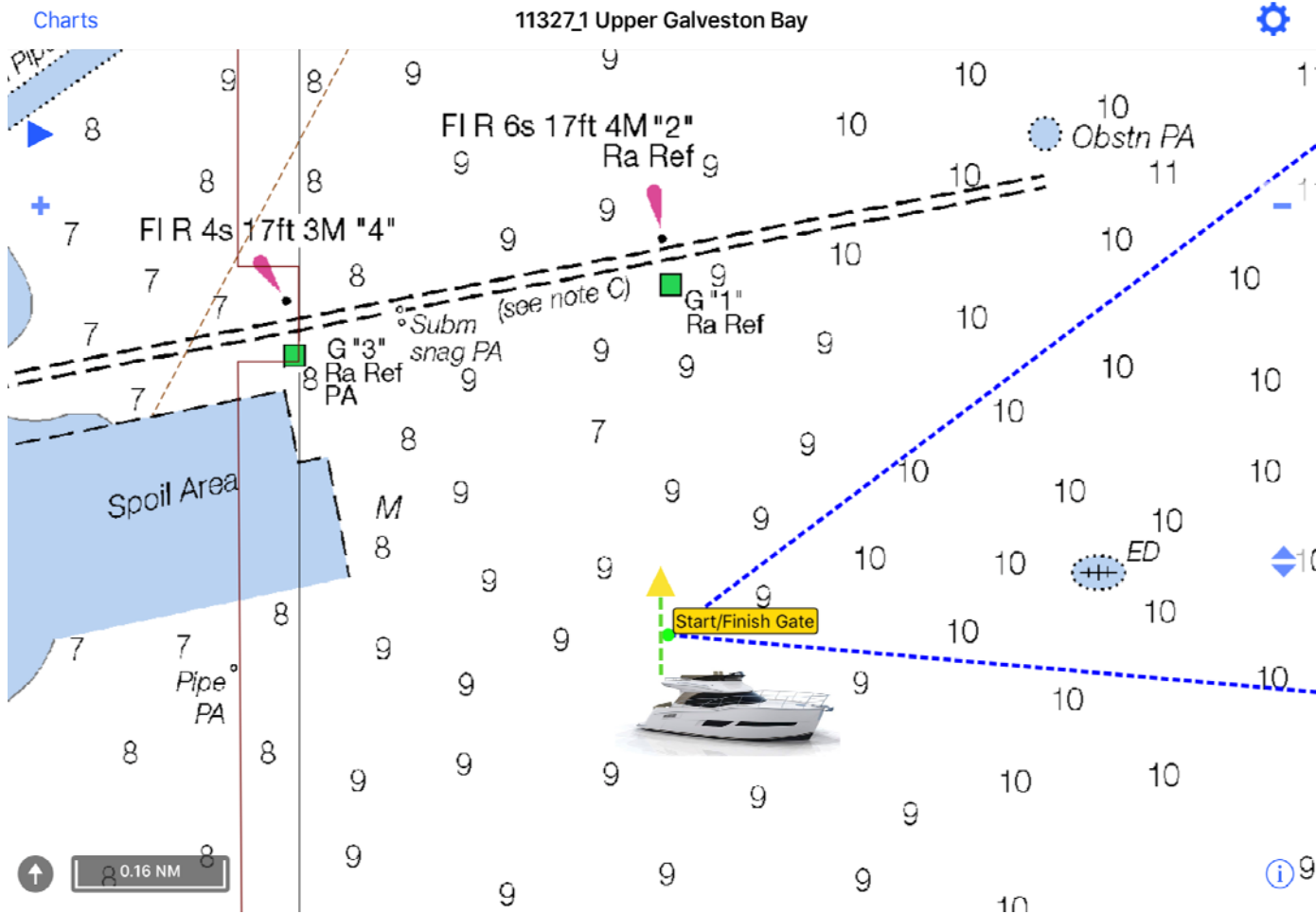
# The Course



Triangular course  
Leave marks to port

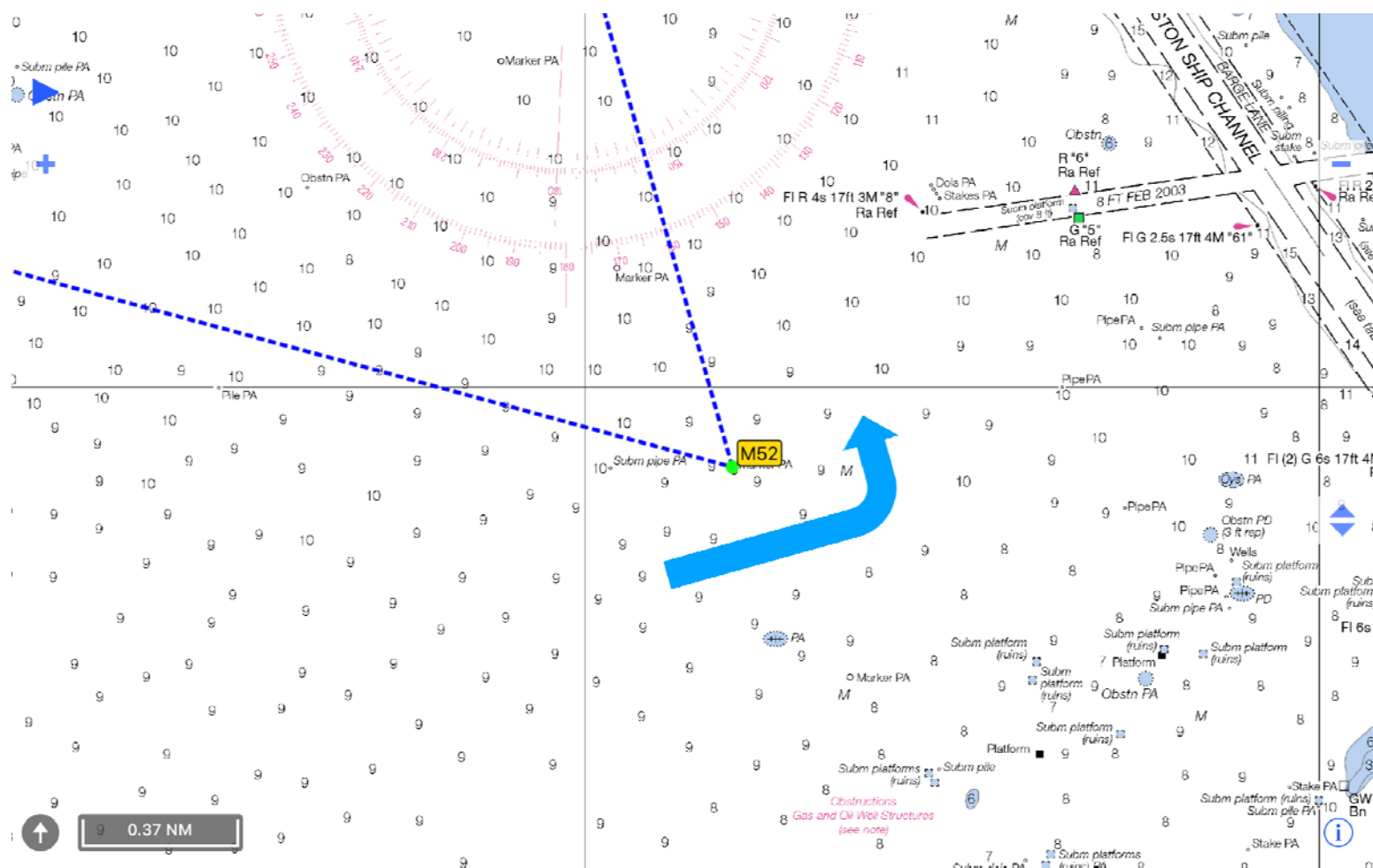
Mark	Bearing	Distance (nm)	Rounding
Start > M52	105	3.56	Port
M52 > Mark2	344	2.97	Port
Mark 2 > Finish	234	3.26	Port
Total		9.79	

# Start Finish Gate





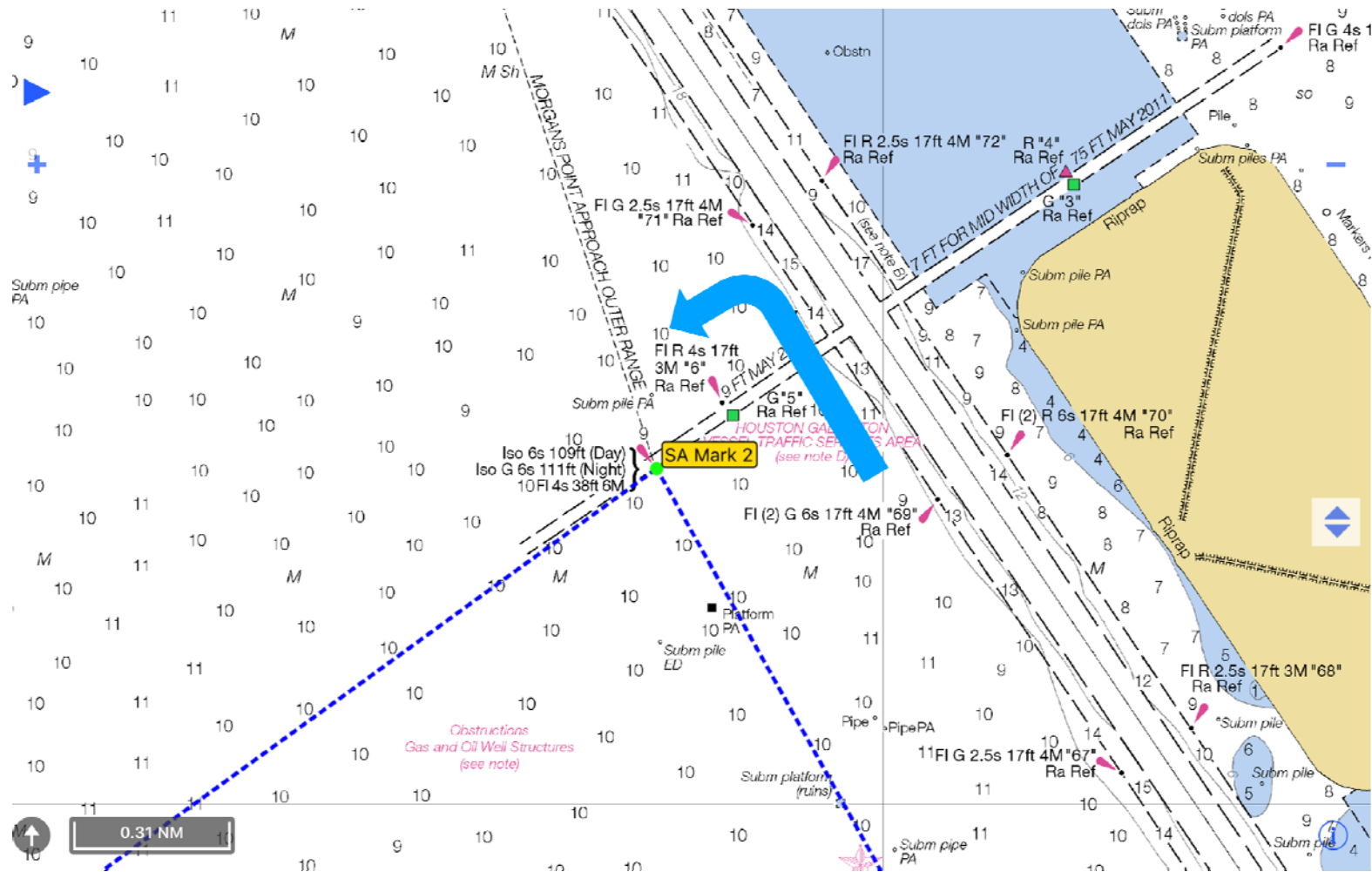
# Mark #1 – M52



Mark	Coordinate	Description
M52	N 29° 31.808' W 094° 55.597'	Galveston Shellfish Boundary Marker



# Mark #2 – North Boater's Cut High Range TWR



Mark	Coordinate	Description
Mark 2	N 29° 34.669' W 094° 56.516'	North Boaters Cut "High Range" Channel Tower

**Pursuit Start Sheet For  
Waterford Yacht Club  
5th Annual WYC Charity Regatta Benefiting Sailing Angels Foundation**

**Start Time:**  **Distance:**  **MAX PHRF:**    
**Limit To Division:**

**Date: 10/19/2018 - 6:00 PM**

Start	Sail#	Skipper	Boat Name	Class/Fleet	PHRF
12:05:14	USA 388	Jerry McElwee	Archangel	PHRF Non-Spin Class	198
12:05:14	3469	Dennis Fegan	Quest	PHRF Non-Spin Class	198
12:05:33	84	Peter Larabee	Dram Buoy	PHRF Non-Spin Class	196
12:08:00	017	Jim LeBlanc	Reflection	PHRF Non-Spin Class	181
12:08:10	none	John Winston	Pathfinder	PHRF Non-Spin Class	180
12:08:20	NA	Mike Pantoja	Cocamane	PHRF Non-Spin Class	179
12:08:20	114	Rafael Brom	SELAH	PHRF Non-Spin Class	179
12:08:20	125	Doug Catenaci	Point of Beginning	PHRF Non-Spin Class	179
12:08:29	P47	Jerry Simoneaux	Rainbow	PHRF Non-Spin Class	178
12:08:29	293	Mike Ferris	Sea Breeze	PHRF Non-Spin Class	178
12:08:49	160	Daven Voorhies	De Bonte Koe	PHRF Non-Spin Class	176
12:09:09	H34	Ken Gallia	R Escape	PHRF Non-Spin Class	174
12:10:07	NA	James D. Glascock	Stellar Of Course	PHRF Non-Spin Class	168
12:10:07	631	Todd Craig	SLY FOX	PHRF Spinnaker Class	168
12:10:17	169	Wayne Wilcox	Elizabeth	PHRF Non-Spin Class	167
12:11:45	423	Robert Scardino	Knot Guilty	PHRF Non-Spin Class	158
12:13:23	31707	Timothy Vogelsang	Tanura	PHRF Non-Spin Class	148
12:14:32	002	John Scherer	Chaton Noir	Multihull Class	141
12:14:32	717	Greg Green	Alive and Free	PHRF Non-Spin Class	141
12:15:01	213	Darryl Hanus	Delta Tango	Multihull Class	138
12:15:50	287	Jim Williams	ALCYONE	PHRF Non-Spin	133

			Class	
12:16:19	380	christopher Parrish Resolute	PHRF Non-Spin Class	130
12:19:55	32887	Peter van Oosten \$iphon	PHRF Non-Spin Class	108

\*Indicates PHRF rating was computed from Portsmouth rating  $[(DPN-55) * 6]$

---

Created by Regatta Network -- Online Sailing Event Registration and Management Services.  
© 2005 Regatta Network, All Rights Reserved. <http://www.regattanetwork.com/>

PHRF	Start Time		PHRF	Start Time		PHRF	Start Time		PHRF	Start Time		PHRF	Start Time
230	12:00:00		185	12:07:20		140	12:14:41		95	12:22:01		50	12:29:22
229	12:00:09		184	12:07:30		139	12:14:50		94	12:22:11		49	12:29:31
228	12:00:19		183	12:07:40		138	12:15:00		93	12:22:21		48	12:29:41
227	12:00:29		182	12:07:49		137	12:15:10		92	12:22:31		47	12:29:51
226	12:00:39		181	12:07:59		136	12:15:20		91	12:22:40		46	12:30:01
225	12:00:48		180	12:08:09		135	12:15:30		90	12:22:50		45	12:30:11
224	12:00:58		179	12:08:19		134	12:15:39		89	12:23:00		44	12:30:20
223	12:01:08		178	12:08:29		133	12:15:49		88	12:23:10		43	12:30:30
222	12:01:18		177	12:08:38		132	12:15:59		87	12:23:19		42	12:30:40
221	12:01:28		176	12:08:48		131	12:16:09		86	12:23:29		41	12:30:50
220	12:01:37		175	12:08:58		130	12:16:19		85	12:23:39		40	12:31:00
219	12:01:47		174	12:09:08		129	12:16:28		84	12:23:49		39	12:31:09
218	12:01:57		173	12:09:18		128	12:16:38		83	12:23:59		38	12:31:19
217	12:02:07		172	12:09:27		127	12:16:48		82	12:24:08		37	12:31:29
216	12:02:17		171	12:09:37		126	12:16:58		81	12:24:18		36	12:31:39
215	12:02:26		170	12:09:47		125	12:17:07		80	12:24:28		35	12:31:49
214	12:02:36		169	12:09:57		124	12:17:17		79	12:24:38		34	12:31:58
213	12:02:46		168	12:10:06		123	12:17:27		78	12:24:48		33	12:32:08
212	12:02:56		167	12:10:16		122	12:17:37		77	12:24:57		32	12:32:18
211	12:03:06		166	12:10:26		121	12:17:47		76	12:25:07		31	12:32:28
210	12:03:15		165	12:10:36		120	12:17:56		75	12:25:17		30	12:32:38
209	12:03:25		164	12:10:46		119	12:18:06		74	12:25:27		29	12:32:47
208	12:03:35		163	12:10:55		118	12:18:16		73	12:25:37		28	12:32:57
207	12:03:45		162	12:11:05		117	12:18:26		72	12:25:46		27	12:33:07
206	12:03:54		161	12:11:15		116	12:18:36		71	12:25:56		26	12:33:17
205	12:04:04		160	12:11:25		115	12:18:45		70	12:26:06		25	12:33:26
204	12:04:14		159	12:11:35		114	12:18:55		69	12:26:16		24	12:33:36
203	12:04:24		158	12:11:44		113	12:19:05		68	12:26:25		23	12:33:46
202	12:04:34		157	12:11:54		112	12:19:15		67	12:26:35		22	12:33:56
201	12:04:43		156	12:12:04		111	12:19:25		66	12:26:45		21	12:34:06
200	12:04:53		155	12:12:14		110	12:19:34		65	12:26:55		20	12:34:15
199	12:05:03		154	12:12:24		109	12:19:44		64	12:27:05		19	12:34:25
198	12:05:13		153	12:12:33		108	12:19:54		63	12:27:14		18	12:34:35
197	12:05:23		152	12:12:43		107	12:20:04		62	12:27:24		17	12:34:45
196	12:05:32		151	12:12:53		106	12:20:13		61	12:27:34		16	12:34:55
195	12:05:42		150	12:13:03		105	12:20:23		60	12:27:44		15	12:35:04
194	12:05:52		149	12:13:12		104	12:20:33		59	12:27:54		14	12:35:14
193	12:06:02		148	12:13:22		103	12:20:43		58	12:28:03		13	12:35:24
192	12:06:12		147	12:13:32		102	12:20:53		57	12:28:13		12	12:35:34
191	12:06:21		146	12:13:42		101	12:21:02		56	12:28:23		11	12:35:44
190	12:06:31		145	12:13:52		100	12:21:12		55	12:28:33		10	12:35:53
189	12:06:41		144	12:14:01		99	12:21:22		54	12:28:43		9	12:36:03
188	12:06:51		143	12:14:11		98	12:21:32		53	12:28:52		8	12:36:13
187	12:07:00		142	12:14:21		97	12:21:42		52	12:29:02		7	12:36:23
186	12:07:10		141	12:14:31		96	12:21:51		51	12:29:12		6	12:36:32

It is the responsibility of all spectator vessels to ensure a safe distance is maintained from the racing yachts, race committee boat, start/finish line, racing area and other vessels in the spectator fleet at all times.

