

62nd North Carolina Governor's Cup Regatta
June 14-16, 2019
Organizing Authority - Carolina Sailing Club
Henderson Point State Recreation Area, Townville, NC

Sailing Instructions

The notation '[DP]' in a rule in the Sailing Instructions means that the penalty for a breach of that rule may, at the discretion of the protest committee, be less than disqualification.

1. RULES

- 1.1 The regatta will be governed by the rules as defined in The Racing Rules of Sailing (RRS).
- 1.2 US Sailing Prescriptions to RRS 63.2 and 63.4 will not apply.
- 1.3 For all classes the Two-Turns Penalty is replaced with the One-Turn Penalty. This modifies RRS 44.1.
- 1.4 If there is conflict between the Notice of Race and the Sailing Instructions, the Sailing Instructions shall prevail. This changes RRS 63.7.

2. NOTICES TO COMPETITORS

Notices to Competitors will be posted on the Official Notice Board located outside on the north side of the Glass House.

3. CHANGES TO THE SAILING INSTRUCTIONS

- 3.1 Changes to the Sailing Instructions made on Saturday will be announced at the Competitors' meeting and subsequently posted on the Official Notice Board not later than 60 minutes prior to the first warning of the day.
- 3.2 Changes made on Sunday will be posted by 0900 Sunday, except for changes to the schedule which will be posted by 1800 on Saturday.
- 3.3 Oral changes to the Sailing Instructions may be made on the water. Race Signal L will be displayed and all boats shall come within hail. Notification of the change will be given to, and acknowledgement received from each boat.

4. SIGNALS MADE ASHORE

- 4.1 Signals made ashore will be displayed from the flagpole at the Glass House.
- 4.2 When signal flag AP is displayed ashore, "1 minute" is replaced with "not less than 30 minutes" in the race signal AP.

5. SCHEDULE OF RACES

- 5.1 The Competitors' meeting will be held Saturday, 1100, at the Glass House.
- 5.2 Five races are scheduled. Any number of races may be sailed each day.
- 5.3 The warning signal for the first race each day is shown in the table below:

Saturday June 15	1st Warning for Race #1 Subsequent races to follow.	1230
Sunday June 16	1 st Warning for 1 st race on Sunday Subsequent races to follow.	1000

- 5.4 On Sunday, no warning signal will be made after 1230.
- 5.5 Flag A displayed, with no sound, while boats are finishing means "No more racing today."

6. CLASS FLAGS

- 6.1 The class flags will be announced at the Competitors' meeting and posted on the Official Notice Board.
- 6.2 The order of class starts is at the discretion of the Principal Race Officer. Class starts may be combined.

7. RACING AREA

Racing is off Henderson Point, Kerr Lake. Two race areas are planned, where the North Area will be northeast of Henderson Point and the South Area will be south. Each class will be assigned an Area which will be announced at the Competitors' meeting and posted on the Official Notice Board.

8. THE COURSE

8.1 The courses will be a "WDR" windward-leeward course with a reaching finish as shown by the diagram in Attachment A. The course length will be based on the sailing conditions.

8.2 The course will be displayed from the rear of the signal boats.

9. MARKS

9.1 Marks 1 (windward mark) and 2 (leeward mark) are orange cylinders.

9.2 Mark 1a (windward offset) is a small yellow mark (tetrahedron or sphere).

9.3 A new mark, as provided in Sailing Instruction 11, will be a yellow cylinder.

9.4 The starting and finishing marks are described in paragraphs 10.1 and 12.

10. THE START

10.1 The starting line will be between a gallows or staff displaying an orange flag on the Race Committee signal boat at the starboard end of the line and at the course side of a pin mark (white sphere) at the port-end of the line.

10.2 Boats whose warning signal has not been made shall avoid the starting area during the starting sequence for other races. [DP]

10.3 A boat that does not start within 5 minutes after her starting signal will be scored Did Not Start (DNS) without a hearing. This changes RRS A4 and A5.

11. CHANGE OF THE NEXT LEG OF THE COURSE

To change the next leg of the course, Race Committee will lay a new mark and remove the original mark as soon as practicable. When in a subsequent change of course a new mark is replaced, it will be replaced with the original mark. There will be no offset mark for new or subsequent marks.

12. THE FINISH

The finishing line will be between a gallows or staff displaying an orange flag on the Race Committee finish boat at the port (windward) end of the line and the course side of the starboard (leeward) end finishing mark, which will be a pink sphere.

13. PENALTY SYSTEM

For all classes the Two-Turns penalty is replaced with the One-Turn penalty. This modifies RRS 44.1.

14. TIME LIMITS

14.1 If no boat in a class has rounded the windward mark 30 minutes after the starting signal, that class's race is abandoned.

14.2 The time limit for the first boat of a class to sail the course and finish is 120 minutes. If no boat meets the time limit, the race will be abandoned.

14.3 Time limits for Open classes will be based on each boat type separately.

15. PROTESTS AND REQUESTS FOR REDRESS

15.1 Protest forms will be available at the Official Notice Board.

15.2 For each class, the protest time limit is 30 minutes after the Race Committee signal boat docks and sounds a horn signal following the last race of the day. This changes RRS 62.2.

15.3 The protest time limit will be posted on the Official Notice Board.

15.4 Protests will be collected by a Jury Representative at the Official Notice Board.

15.5 Notices will be posted on the Official Notice Board no later than 15 minutes after the protest time limit to inform competitors of hearings in which they are parties or named as witnesses.

15.6 On the last scheduled day of racing a request for redress based on a Protest Committee decision shall be delivered no later than 30 minutes after the decision was posted. This changes RRS 62.2.

16. SCORING

16.1 Classes with five (5) or more boats are scored as one-design classes. All boats in a class must be registered and paid by Saturday 1030 hours.

16.2 No scores will be excluded. This changes Rule A2.1.

16.4 Open Monohull and Open Multihull classes will be scored using wind-adjusted Portsmouth Handicaps.

16.5 Race Committee personnel included in determining prizes do not count as registered boats when scoring DNC, DNS, DNF, OCS, DSQ or RET.

16.6 For determining the winner of the Governor's Cup, a skipper receives one point for each boat in his class that the skipper beats that finishes or is scored DNS, DNF, OCS, RET, DSQ, or RC (awarded to members of a sailing club serving on race committee who skipper a boat in that class). Race Committee members cannot count in more than one class. This Governor's Cup scoring is also used to determine the Top Female and Top Junior skippers.

16.7 One race is to be completed to constitute a regatta.

17. SAFETY REGULATIONS

17.1 Prior to the first warning signal of each day, each boat shall sail by the stern of the Race Committee signal boat and hail her sail number until acknowledged by the Race Committee repeating the boat's sail number. [DP]

17.2 A boat that retires from a race or leaves the course before racing for the day is completed shall notify a Race Committee boat as soon as possible. [DP]

18. PRIZES

The number of trophies awarded to a class will be based on the number of boats registered in that class plus the number of skipper-level sailing club members in that class serving on Race Committee as follows: (1-5) 1 trophy, (6-10) 2 trophies, (11-15) 3 trophies, (16-20) 4 trophies, (21 or more) 5 trophies. Trophies will also be awarded to the Top Female and Top Junior skippers.

19. THE GOVERNOR'S CUP

The NC Governor's Cup is a perpetual trophy engraved with the name of the skipper having the best average score in their one-design class based on the NC Governor's Cup high-point system (SI 16.6). A keeper trophy will also be presented to the winning skipper and crew.

20. OFFICIAL BOATS

The Race Committee signal, finish, and mark boats will display a RC flag. RC flags in the North Area will be blue while RC flags in South Area will be yellow.

21. CLEAN REGATTA

21.1 We are proud to announce that we have joined the race to restore ocean health with Sailors for the Sea's Clean Regattas program. Protecting our local waters is very important to this regatta and we ask for your help in this effort.

21.2 On shore separate your trash and place recyclables in the appropriate recycling containers which will be available at the Glass House.

21.3 On the water trash may be placed on any Race Committee boat. Race Committee will separate and recycle collected trash.

21.4 We are working to eliminate single use plastics. Utilize reusable water bottles and coffee cups by bringing your own to the regatta. We will provide water filling stations on shore and on the water.

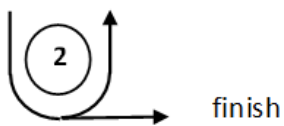
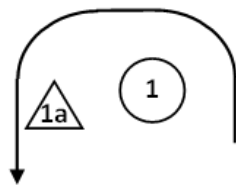
21.5 Please help us to leave Henderson Point State Park in better shape than when we arrived by picking up any and all trash that you find. This includes the shoreline and while on the water.

22. DISCLAIMER OF LIABILITY

Competitors participate in the regatta entirely at their own risk. See RRS 4, Decision to Race. The organizing authority will not accept any liability for material damage or personal injury or death sustained in conjunction with or prior to, during, or after the regatta.

WDR

Windward Start
Downwind Reach Finish



Mark Rounding Order

Course WDR S - 1 - 1a - 2 - F

Course WDR2 S - 1 - 1a - 2 - 1 - 1a - 2 - F

ATTACHMENT A

