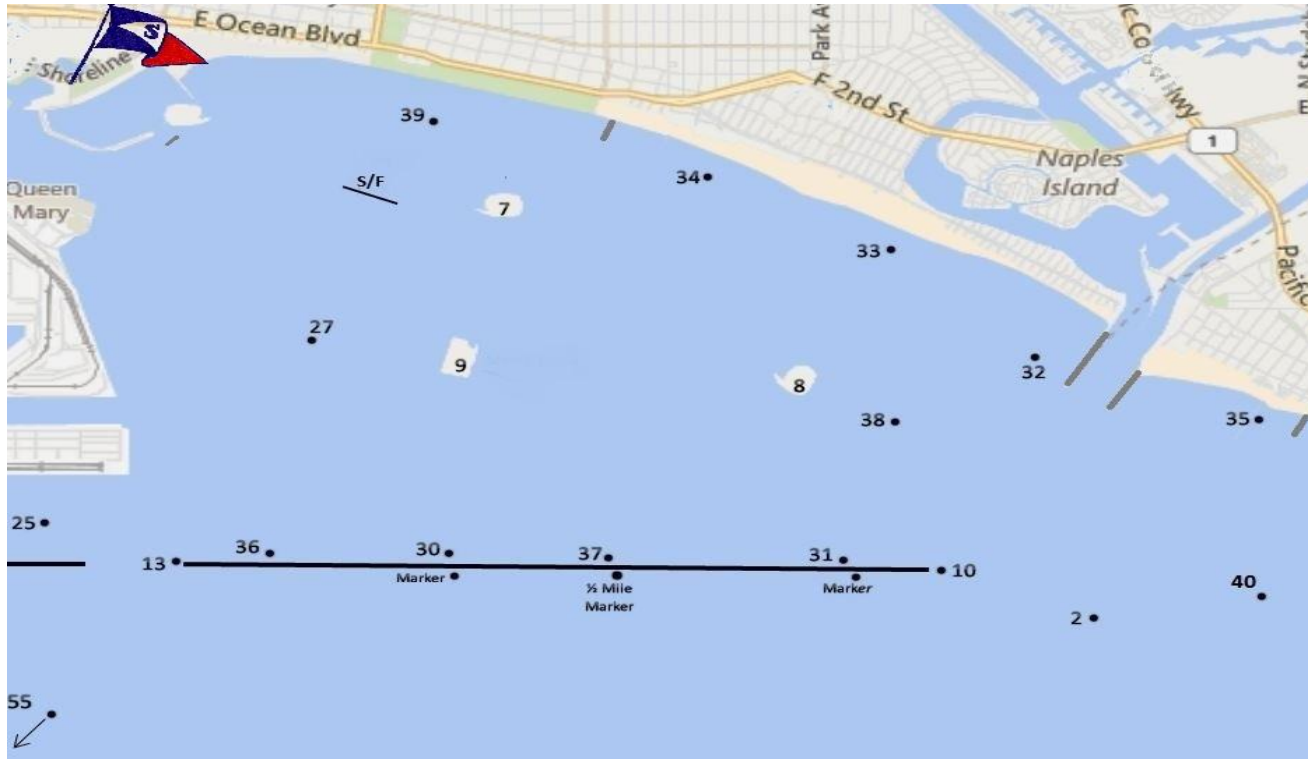


## Shoreline Yacht Club SRC-16A



Course No.	Marks	N.M	Course No.	Marks	N.M	Course No.	Marks	N.M
1	S-25-39-F	4.6	17	S-36-39-36-39-F	8.4	34	S-37-33-31-32-34-39-F	10.3
2	S-25-37-39-F	6.4	18	S-36-32-30s-39-F	9.1	35	S-37-32s-2-35-39-F	9.4
3	S-25-39-25-39-F	9.1	19	S-36-32-30s-33-9s-39-F	11.7	36	S-31-39-F	4.6
4	S-25-10-33-39-F	8.6	20	S-30-39-F	4.3	37	S-31-32-39-F	6.6
5	S-25-2-32-36s-39-F	11.6	21	S-30-31-8-39-F	5.9	38	S-31-2-34-39-F	7.3
6	S-55-39-F	15.0	23	S-30-34-39-F	5.5	39	S-31-32-37s-33-34-39-F	9.7
7	S-55-21-10-32-39-F	19.3	24	S-30-39-30-39-F	8.5	40	S-31-10s-13s-33-39-F	10.2
8	S-21-39-F	7.8	25	S-30-32s-31s-34-39-F	9.4	41	S-31-35s-2s-32-31s-34-39-F	11.6
9	S-21-10-39-F	10.2	26	S-30-32-30s-34-39-F	10.0	42	S-31-35-13-10-34-39-F	13.3
10	S-21-23-10-32-36s-39-F	13.7	27	S-30-31-32-30s-34-39-F	10.1	43	S-10s-13s-39-F	7.3
12	S-13-10-33-39-F	7.9	28	S-30-34-13-10-34-39-F	12.2	45	S-10s-13s-32-34-39-F	10.6
13	S-13-10-35-39-F	8.9	29	S-37-39-F	4.6	46	S-2-39-F	6.6
14	S-13-10-33-37s-34-39-F	11.0	30	S-37-34-39-F	5.5	47	S-2s-31s-39-F	7.1
15	S-36-39-F	4.2	31	S-37-32-39-F	6.6	A	S-W-F	1.5
16	S-36-31-9-39-F	5.3	32	S-37-35-34-39-F	7.7	B	S-W-L-F	2.0

Description of Marks	
No.	Description
2	Spar Buoy - 1/2 mile E of East End of L Beach Breakwater
7	Island White
8	Island Chaffee
9	Island Freeman
10	East End of Long Beach Breakwater
13	West End of Long Beach Breakwater - Queen's Gate
21	Yellow Lighted Buoy Y "B" - Fl Y 6 sec - 1.6 miles, bearing 193 magnetic from East End of Middle Breakwater
23	Yellow Lighted Buoy Y "A" - Fl Y 4 sec - 1.6 miles, bearing 134 magnetic from West End of Long Beach Breakwater
25	Green channel marker buoy G "3" Fl G 4 sec
27	Red channel marker buoy R "2"
30	Spar Buoy - 100 yards N of West Measured Mile Marker
31	Spar Buoy - 100 yards N of East Measured Mile Marker
32	Spar Buoy - .5 miles NW of West End Alamos Bay Jetty, 500 yards off beach
33	Spar Buoy - 1 mile NW of West End of Alamos Bay Jetty, 350 yards off beach
34	Spar Buoy - 500 yards E from end of Belmont Pier, 300 yards off beach
35	Spar Buoy - 600 yards W from end of Seal Beach Municipal Pier
36	Spar Buoy - .5 NM W of W Measured Mile Marker, 100 yards N of the Br Water
37	Spar Buoy - 100 yards N of the 1/2 mile Measured Mile Marker, midway between Mark 31 and Mark 30
38	Spar Buoy - 400 yards SE from South Marker Horn on Island Chaffee
39	Spar Buoy - 1/4 mile SE of Island Grissom (may be replaced with orange inflatable or "M" flag on staff)
40	(future mark)
55	Point Fermin Whistle Buoy - R "6" Fl R 4 sec WHISTLE
Spar buoys are yellow. Locations & distances approx.	

## **1. RULES**

1.1 The Race will be governed by the current Racing Rules of Sailing ("RRS"), the U.S. Sailing Prescriptions, the rules of the classes racing, these Sailing Instructions, the Notice of Race, and any Addendum which may be posted. In the event of conflict, the provisions of these Sailing Instructions, and any change thereto, will prevail.

1.2 One Design Yachts shall sail in their established class unless otherwise approved by the Race Committee.

1.3 Double headsails shall be allowed on non-spinnaker class yachts if so prescribed in the Notice of Race.

1.4 Start Finish Line. The area between the RC boat and the S/F (orange/white flags) line shall be considered an extension of the S/F line.

## **2. ENTRIES**

2.1 Entries shall be submitted as prescribed in the Notice of Race.

## **3. NOTICES TO COMPETITORS**

3.1 Notices to competitors will be posted on the Official Race Notice board at Shoreline Yacht Club, downstairs on the boardwalk side of the building.

## **4. CHANGES IN SAILING INSTRUCTIONS**

4.1 Any changes to these Sailing Instructions will be posted before 0900 hours on the day the change takes effect.

## **5. VISUAL SIGNALS**

5.1 Visual signals shall be as prescribed in racing rule 25 and race signal definitions.

5.2 The following International Code Flags are added and may be displayed by the RC under the course signal:

"T" Twice around signal "R" Reverse course signal

## **6. SCHEDULE OF RACES**

6.1 The schedule of races shall be as prescribed in the Notice of Race or an addendum thereto.

## **7. CLASS FLAGS**

7.1 For class identification each yacht shall display an International Numeral Pennant from its permanent backstay as follows: PHRF A, "Two"; PHRF B, "Five"; PHRF C, "Seven"; PHRF A N/S, "Four"; PHRF B N/S, "Eight"; PHRF C N/S, "Nine". No identification pennants are required for One Design classes.

## **8. RACING AREA AND CHECK IN**

8.1 The racing area will be as shown on the current Shoreline Yacht Club course chart prescribed in the Notice of Race.

8.2 Boats must check in with the Race Committee prior to the warning signal for the first class.

## **9. THE COURSE**

9.1 Courses will be selected from those shown on the current Shoreline Yacht Club course chart prescribed in the Notice of Race.

## **10. MARKS**

10.1 Each mark of the course shall be rounded or passed to port unless the mark designated is followed by a small "s", which mark shall be rounded or passed to starboard.

10.2 Race signals are modified to read, "No sound signal will be used when code flag "M" is displayed at a mark. This changes racing rule 34.

## **11. THE START**

11.1 Classes will be started in five-minute intervals in the order prescribed in the Notice of Regatta or an Addendum thereto. The starting signal for a class shall be the warning signal for the following class, and the class flag for the following class will be displayed shortly thereafter. This changes racing rule 26.

11.3 Racing rule 27.1 is modified to read, "The course to be sailed for a given class may be displayed with, or soon after, the preparatory signal for that class."

11.4 Racing rule 27.2 is modified to read "The Race Committee may shift a starting line mark during the first two minutes of a preparatory signal."

11.5 Boats whose warning signal has not yet been made shall keep well clear of the starting area. Any violation may subject a boat to protest by the Race Committee.

11.6 A boat that starts more than five (5) minutes after her starting signal may be scored DNS without a hearing. This changes racing rules 63.1, A4.1 and A5.

## **12. RECALLS**

12.1 Individual recalls will be signaled in accordance with racing rule 29.1.

12.2 Boats subject to rule 29.1, Individual Recall, at their starting signal, may be hailed by sail number on VHF channel 68. Failure of the RC to transmit or failure of a competitor to receive this information, mistaken transmissions, timeliness or order of hail shall not be considered grounds for granting redress. This changes racing rule 62.

12.3 General recalls will be signaled in accordance with racing rule 29.2. The recalled class shall start five minutes after its previous starting signal was made. The starting signals for succeeding classes will be delayed accordingly.

## **13. SHORTENING COURSE**

13.1 A course may be shortened at any rounding mark or at the start-finish line at the end of the first lap of a twice around course. The Race Committee shall make two sound signals and display code flag "S" at the mark where the course is shortened.

## **14. ABANDONMENT AND CANCELLATION**

14.1 The Race Committee may abandon or cancel a race in progress when a change in the weather conditions, a mark out of position or missing, or any other reason in its judgment makes the race an unsatisfactory test of skill.

## **15. RETIREMENT**

15.1 A yacht that checks in and later retires shall make every effort to notify the Race Committee before leaving the course area. If that is not possible then, at the first reasonable opportunity after retiring, notify Shoreline Yacht Club in person, or by telephone (562) 435-4093. The Race Committee will monitor marine VHF channel 68.

## **16. THE FINISH**

16.1 The finishing line will be between two marks, each with an orange/white flag, (one may be aboard the Race Committee boat) located in the same area as the start line.

## **17. TIME LIMIT**

17.1 The time limit shall be as prescribed in the Notice of Race.

## **18. PROTESTS**

18.1 A yacht intending to protest shall follow Rule 61.1(a) and, promptly after finishing, notify the race committee of the name and/or sail number of the yacht being protested.

18.2 Protests shall be written on forms available at Shoreline Yacht Club. WRITTEN PROTESTS SHALL BE FILED WITH THE RACE SECRETARY OR PROTEST CHAIR WITHIN ONE HOUR AFTER THE RACE COMMITTEE BOAT DOCKS.

18.3 Protests may be subject to mediation.

18.4 Protest hearings will be held at Shoreline Yacht Club following the close of racing each day unless otherwise prescribed in the Notice of Race.

## **19. SCORING**

19.1 The Low Point Scoring System, Appendix A 4.1 of the racing rules, will apply. No race score shall be excluded for purposes of series scoring under Appendix A2 of the racing rules.

## **20. TROPHIES**

20.1 Trophies will be presented at the place and time prescribed in the Notice of Race. TROPHIES NOT CLAIMED WITHIN 60 DAYS OF THE TROPHY PRESENTATION WILL BE FORFEITED AND WILL REVERT TO CLUB OWNERSHIP.

20.2 The number of trophies to be awarded will be as prescribed in the Notice of Race.