



## SAILING INSTRUCTIONS

- 1.1 Rules** The regatta will be governed by the rules as defined in *The Racing Rules of Sailing*, together with the rules of the Int. 505 class.
- 2.1 Official Notices** Notices to competitors will be posted on the notice board located on the East window of the WRSC clubhouse.
- 3.1 Changes to SI's** Any shore side change in the sailing instructions will be posted on the official notice board before 0900 on the day it will take effect, except that any change to the schedule of races will be posted by the end of protest time on the day before it will take place.
- 4.1 Schedule of Races**
- |                 |      |                                  |
|-----------------|------|----------------------------------|
| <b>Friday</b>   | 1000 | Competitors' Meeting             |
|                 | 1130 | First Warning Signal             |
|                 | 1800 | Dinner + Debrief                 |
| <b>Saturday</b> | 1030 | First Warning Signal             |
|                 | 1600 | Dinner + Debrief                 |
| <b>Saturday</b> | 1030 | First Warning Signal             |
|                 | 1400 | Last Start                       |
|                 |      | Awards as soon as is practicable |
- 5.1 Class Flags** Class Flags will be the respective insignia or as described at the competitors' meeting.
- 6.1 The Starts** The Race Committee intends to use a Gate (Rabbit) Start. The following procedure will be used:
- (a) The first Rabbit of the regatta will be chosen at random at the competitor's meeting.
  - (b) The Gate Boat will be trailing the Rabbit as closely as possible during the gate start.
  - (c) The Rabbit shall round the starting during the five seconds between the starting signal and five seconds after the starting signal.



## SAILING INSTRUCTIONS

- (d) The gate will be open for X seconds as posted on the RC Boat. The default of 60 seconds will be used if no seconds are shown on RC.
  - (e) After X seconds, the Gate Boat will drop a mark signifying the gate is closed.
  - (f) Any boat that has not gated at this point will need to drop down to pass through the pin and the dropped mark.
  - (g) The gate closed mark shall be removed 1 minute after being dropped.
  - (h) The third-place boat in the race will be the Rabbit in the upcoming race.
  - (i) The Rabbit's sail number will be posted on the RC boat.
- 6.4 Boats whose warning signal has not been made shall avoid the starting area during the strating sequence for other races.
- 6.5 Note that the order of the starts may not be constant.
- 7.1 The Finish** The finishing line will be between a staff displaying an orange flag on the race committee vessel and the course side of the finishing mark.
- 8.1 Time Limits** The first boat must finish within 45 minutes
- 8.2 All boats failing to finish within 10 minutes after the first boat finishes, will be scored DNF without hearing. This changes RRS 35, A4 and A5.
- 9.1 Protests + Requests for Redress** Protest Forms are available in the board room. Protests and requests for redress or reopening shall be delivered to the PRO within one hour after the RC returns to the dock
- 9.2 Protests must be reported to the Finish RC within 15 minutes after the protestor's finish.



## SAILING INSTRUCTIONS

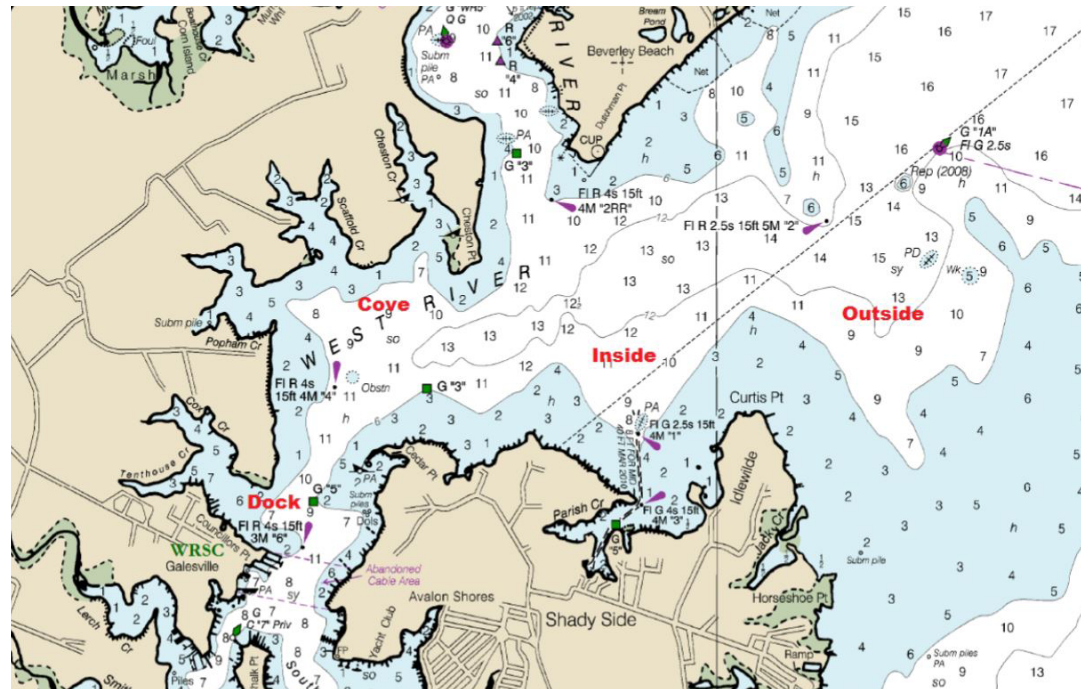
- 9.3 Notices will be posted no later than 30 minutes after the protest time limit to inform competitors of hearings in which they are parties or named as witnesses and where the hearings will be held.
- 10.1 Penalty System + Protests** Rule 44.1 is changed so that the Two-Turns Penalty is replaced by the One-Turn Penalty.
- 11.1 Courses** Courses will be shown in Appendix A.
- 12.1 Marks** All marks will be as described at the Skipper's Meeting
- 13.1 Scoring** One race is required to be completed to constitute a series.
- (a) When fewer than 5 races have been completed, a boat's series score will be the total of her races
- (b) When from 5 to 11 races have been completed, a boat's series score will be the total of her race scores excluding her worst score.
- (c) When 12 or more races have been completed, a boat's series score will be the total of her race scores excluding her two worst scores.
- 14.1 Safety Regulations** All competitors' boats shall sail astern of the Signal Boat, give their sail number, and wait for acknowledgement from the RC.
- 14.2 A boat that retires from a race shall notify the RC as soon as possible.
- 15.1 Support Boats** Support boats shall be marked "WRSC" or as described at the competitor's meeting.
- 16.1 Prizes** There will be prizes for the top three finishers.
- 17.1 Radio Communication** Except in an emergency, a boat that is racing shall not make voice or data transmissions and shall not receive voice or data communications that is not available to all boats. This restriction also applies to mobile telephones but does not apply to communications to notify RC that a competitor is leaving the race area.



## SAILING INSTRUCTIONS

### 18.1 Racing Area

The venue shall be finalized by the RC on race day.



### 19.1 Disclaimer of Liability

Competitors participate in the regatta entirely at their own risk. See RRS 4, Decision to Race. The organizing authority will not accept any liability for material damage or personal injury or death sustained in conjunction with or prior to, during, or after the regatta.



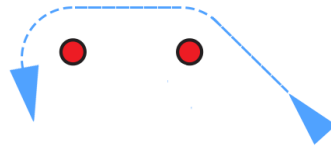
## SAILING INSTRUCTIONS

### APPENDIX A

#### MARK CONFIGURATION AND POSSIBLE COURSES

The courses to be sailed will be as follows: Port rounding of windward mark with offset, leeward gate, TWO (2) laps, downwind finish. Course length shall be set to attempt to achieve races of approximately 30 minutes in duration. See graphic below.

Windward Mark



Gate

