

43rd Ol' Man of the Sea Regatta
FORT WORTH BOAT CLUB EAGLE MOUNTAIN LAKE
43rd Ol' Man of the Sea
November 3rd and 4th, 2018
SAILING INSTRUCTIONS

1 Rules

The regatta will be governed by the rules as defined in the *2017-2020 Racing Rules of Sailing*.

2 Notices to Competitors

Notices to competitors will be posted on the official notice board located on the east window of the FWBC bar.

3 Changes to the Sailing Instructions

Any change to the sailing instructions will be posted before 8:30 AM on the day it will take effect, except that any change in the schedule of races will be posted by 7:00 PM on the day before it will take effect.

4 Signals Made Ashore

Signals made ashore will be displayed on the harbor flagpole.

When flag AP is displayed ashore, '1 hour' is replaced with 'not less than 30 minutes' in race signal AP.

5 Schedule of Races

Day and Date

Saturday, 3rd November

9:30 AM Skippers Meeting

10:45 AM First race of day, additional races to follow at the discretion of the Race Committee.

Sunday, 4th November

9:30 AM First race of day, additional races to follow

5.1 On Saturday, November 3rd, there may be a lunch break on the water at the discretion of the Race Committee.

5.2 On Sunday, November 4th there will be no warning signal made after 1:00 PM.

6 Class Flags and Group Assignments

Class flag assignments (numeral pennants) and Group Assignments will be posted on the official notice board following the skippers' meeting.

See Attachment 3 for requirements for entering and racing in "Cruising Class".

7 Racing Area

Attachment 1 shows the approximate location of the racing area.

Boats may not sail between the marker buoys surrounding the Azle Water Pump Station because of the Regulations of the Tarrant Regional Water District.

8 The Courses

The marks of the courses will be yellow tetrahedrons, Start mark and Finish mark will be a red sphere. See *Attachment 2* for a description of the courses

9 The Start

Races will be started by using rule 26 with the warning signal made five minutes before the starting signal. Combined fleet starts may be used and will be signaled with the starting fleets' class flags (numeral pennants). The Race Committee may sound several brief signals prior to the first warning signal in a starting sequence.

The starting line will be between a staff displaying an orange flag on the Race Committee signal boat and a red sphere

Boats whose warning signal has not been made shall keep clear of the starting area during the starting sequence for other fleets.

A boat starting later than 4 minutes after her starting signal will be scored Did Not Start. This changes RRS A4 and A5

10 Recalls

Individual recalls will be signaled in accordance with rule 29.1. In addition, the Race Committee will attempt to broadcast the name or number of each recalled boat on VHF radio (See 20). If rule 30.1 is in effect, boats which cross the starting line in the minute prior to the start may be notified before the starting signal. This changes RRS 41. The following shall not be grounds for redress:

- a) Failure of a boat to receive the recall broadcast
- b) A boat's position in the sequence of broadcast numbers

General recalls will be signaled in accordance with rule 29.2. If a subsequent start's class flag has been displayed, it shall be removed and voided.

11 Change of the Next Leg of the Course

To change the next leg of the course, the Race Committee will signal the new mark (or move the finish line) If the Race Committee displays fleet numbers on the signal board, then the change of course applies only to those fleets whose numbers are signaled.

12 The Finish

The finishing line will be between a staff displaying an orange flag on a Race Committee boat and the Finish Mark.

13 Time Limits

If no boat has passed Mark 1 within 1 hour of the start of the first class, the race will be abandoned.

43rd Ol' Man of the Sea Regatta

Boats failing to finish within 30 minutes after the first boat in their class sails the course and finishes will be scored Did Not Finish without a hearing. This changes RRS 35 and A4 and A5.

14 Protests and Requests for Redress

Protest forms are available at the Protest Desk located in the FWBC Club House. Protests and requests for redress or reopening shall be delivered there within the appropriate time limit.

For each fleet, the protest time limit is 60 minutes after their Race Committee signal boat docks after the last race of the day. The time of docking will be signaled by a sound and the time posted on the Official Notice Board.

Notices will be posted within 30 minutes of the protest time limit to inform competitors of hearings in which they are parties or named as witnesses. Protest hearings will be held in the Commodore's Room of the FWBC Club House.

Notices of protests by the Race Committee or Protest Committee will be posted to inform boats under rule 61.1(b).

15 Scoring

One race is required to be completed to constitute a regatta.

When fewer than five races have been completed, a boat's regatta score will be the total of her race scores.

When five or more races have been completed, a boat's regatta score will be the total of her race scores excluding her worst score.

16 Safety Regulations

Check-In: Before the warning signal of her first race of each day, each boat shall sail on starboard tack past the stern of the Race Committee signal boat and hail her sail number until acknowledged by the Race Committee by repeating the boat's sail number.

A boat that retires from a race shall notify the Race Committee as soon as practical by radio or by notifying the harbor master to contact them.

17 Support Boats

Team leaders, coaches, and other support personnel shall stay outside areas where boats are racing from the time of the preparatory signal for the first class to start until all boats have finished or retired or the Race Committee signals a postponement, general recall or abandonment.

18 Trash Disposal

Boats shall not put trash in the water. Boats observed putting trash in the water may be asked to withdraw from the last race or the regatta.

43rd Ol' Man of the Sea Regatta

20 Radio Communication

The Race Committee for **will use Channel 68**. Except in an emergency, a boat shall neither make radio transmissions while racing nor receive radio communications not available to all boats. This restriction also applies to mobile telephones.

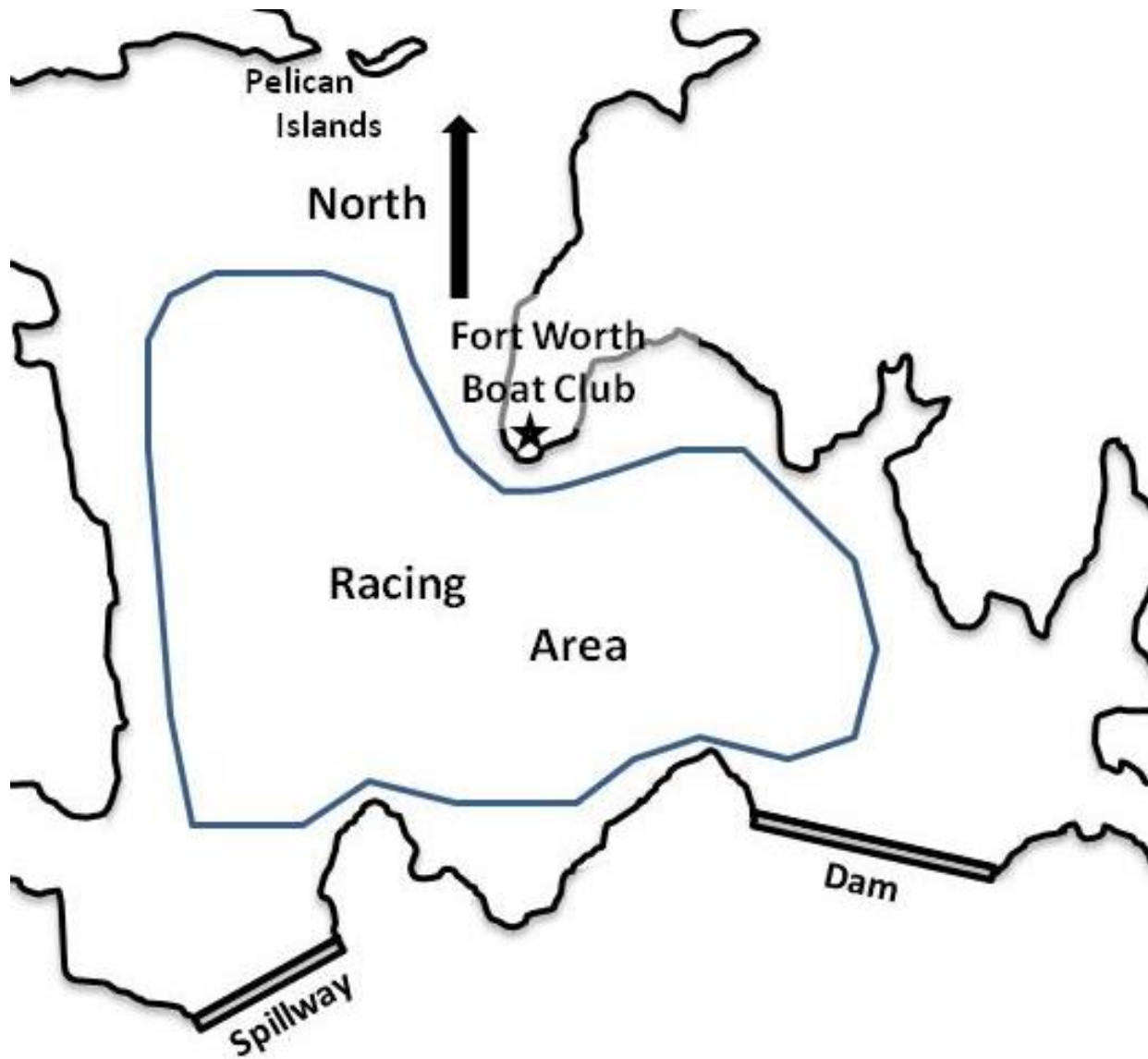
21 Prizes

Trophies will be awarded based on the number of boats in a fleet and as determined by the organizing authority.

22 Disclaimer of Liability

Competitors participate in the regatta entirely at their own risk. See rule 4, Decision to Race. The organizing authority will not accept any liability for material damage or personal injury or death sustained in conjunction with or prior to, during, or after the regatta.

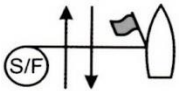
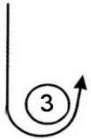
43rd Ol' Man of the Sea Regatta
Attachment 1 – Racing Area



43rd Ol' Man of the Sea Regatta

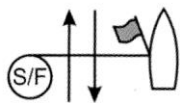
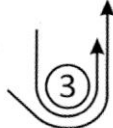
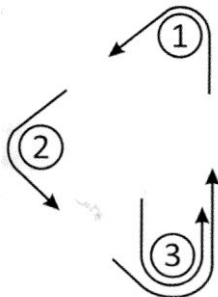
Attachment 2-Courses

Course W - Windward/Leeward Leeward Finish



Course W -Windward/Leeward	
Signal	Mark Rounding Order
W2	Start - 1 - 3 - 1 - Finish
W3	Start - 1 - 3 - 1 - 3 - 1 - Finish
W4	Start - 1 - 3 - 1 - 3 - 1 - 3 - 1 - Finish

Course T – Triangle, Leeward Finish



Course T - Triangle, Leeward Finish	
Signal	Mark Rounding Order
T2	Start - 1 - 2 - 3 - 1 - Finish
T3	Start - 1 - 2 - 3 - 1 - 3 - 1 - Finish
T4	Start - 1 - 2 - 3 - 1 - 3 - 1 - 3 - 1 - Finish

43rd Ol' Man of the Sea Regatta

Attachment 3 – Additional Requirements for Cruising Fleet

- **Score under FWBC PHRF Rules.**
- **Score only Saturday's races.**
- **Open to displacement hull yachts that are stored in the water. No dry-sailed or hoist stored yachts.**
- **Headsails limited to genoa jibs; no spinnakers, gennakers, drifters.**
- **No whisker poles, spinnaker poles or reaching struts allowed.**
- **Motors must be inboard or outboard in place in the water.**