



2018 GBCA Chili Chase Regatta

Galveston Bay Texas

December 1st 2018

Galveston Bay Cruising Association

1500 Marina Bay Dr. Suite 1592 • Building #113B • Clear Lake Shores, TX

Sailing Instructions

1. RULES

The regatta will be governed by the *rules* as defined in the current 2017-2020 *Racing Rules of Sailing*, the Notice of Race, any OD Class Rules and these Sailing Instructions.

The following RRS are modified herein:

Sailing Instruction 6.2 modifies RRS 62.1(a)

Sailing Instruction 9.2 & 9.3 modifies RRS 26

Sailing Instruction 13 modifies RRS 61

Sailing Instruction 15 modifies RRS 35

2. NOTICES TO COMPETITORS

Notices to Competitors will be posted at:

https://www.regattanetwork.com/clubmgmt/applet_club_events.php?CLUB_ID=162

Notices regarding Protests will also be posted on the door of the GBCA office.

3. CHANGES TO THE SAILING INSTRUCTIONS

Any change to the sailing instructions or notice of race will be posted before 0800 on the day it will take effect.

4. WARNING SIGNAL

The warning signal for the first start will not be before 1055 hours.

5. Racing Area

The racing area will be in the part of Galveston Bay between Seabrook and the Houston Ship Channel, and between San Leon and the Bayport Ship Channel. Boats shall not enter the Houston Ship Channel or Bayport Ship Channel while *racing*. The Houston Ship Channel and the Bayport Ship Channel are designated as obstructions.

6. RADIO COMMUNICATION

6.1 Radio communication will be conducted on VHF channel 69.

6.2 In addition to signaling Individual Recalls in accordance with RRS 29.1, as a courtesy, the Race Committee will attempt to broadcast the names or sail numbers of boats that have started early. Failure to make such a broadcast, failure of a boat to receive that broadcast, a boat's order in that broadcast, or the promptness of that broadcast will not be grounds for redress. This modifies RRS 62.1(a).

7. CHECK-IN PROCEDURE

All yachts intending to race shall check in with the Race Committee on VHF Channel 69 prior to their warning signal.

8. START LINE / FINISH LINE

The Start Line / Finish Line will be approximately 0.6nm south of Clear Lake channel marker 1, between an Orange Flag displayed from the Signal Boat and the course side of a nearby Orange Mark. The Start Line will be squared to the mark of the first leg of the course signaled; the finish line will be squared from the last mark of the course signaled, by moving the mark or RC signal boat.

9. THE START

9.1 The starting line will be between the staff displaying an orange flag on the Signal Boat on the starboard end and the course side edge of a nearby mark at the port end of the line.

9.2 This is a reverse start (pursuit) race, with the (GPS) start time for each boat based on its PHRF rating following the 1100 hour start. See the accompanying Appendix B for assigned boat start times. This modifies RRS 26

9.3 The Race Committee will give no additional starting signals, except to monitor and call individual boats OCS prior to their assigned start time with sound and the individual recall flag. This modifies RRS 26. Any boat(s) signaled as OCS at their respective starting *time* shall thereafter sail from the course side across the starting line or one of its extensions to the pre-start side before *starting*.

9.4 The signal boat *may* broadcast occasional time checks on VHF 69 until all boats have started.

10. COURSE and MARKS

10.1 Courses will be signaled by a numeral pennant correlating with the course diagrams described in Appendix A. The approximated heading and distance to each mark are also described.

10.2 Start will be Pursuit style according PHRF rating as described in Appendix B for the primary race. If a second race is attempted, the start will be according to the same schedule with adjustment to the next top of the hour.

10.3 Fixed mark courses will use marks “E”, “H”, “South boat cut 8” and two 8' Tetrahedrons dropped, one in front of the Todville Road shoreline and the second in front of the San Leon shoreline. Approximate coordinates and description of the marks are:

Mark	Approximate Coordinate	Description
Start/Finish	N 29° 32.567' W 094° 59.545'	<i>RC Signal boat and a nearby orange Tetrahedron</i>
E	N 29° 35.787' W 094° 56.935'	<i>The Low Range Marker (Upper Range “A”) in Galveston Bay. The mark is an orange and white structure near Houston Ship Channel Marker #73, 0.23 nm NNW of the old low range.</i>
South Boat Cut 8	N 29° 32.417 W 094° 55.080'	<i>A channel marker in Galveston bay, near the Houston Ship Channel marker #61</i>
Todville Rd beach Tet	N 29° 34.500' W 094° 59.300'	<i>A dropped mark anchored 8' Tetrahedron</i>
San Leon beach Tet	N 29° 31.570' W 094° 57.400'	<i>A dropped mark anchored 8' Tetrahedron</i>

11. THE FINISH

The Finish Line will be between a staff displaying an orange flag on the Signal Boat on the port end and the course side edge of the starboard end Orange Mark.

12. Shorten Course

If the Race Committee displays the “S” code flag for weather reasons, all classes will sail the shortened course. The race committee is prepared to recalculate the adjustments for the shortened course.

13. PROTESTS

The protest and redress procedures for this regatta will utilize basic elements of the new RRS Appendix T, a US Sailing Prescription. Protests shall be communicated to the Race Committee before leaving the race area and must be filed in writing within 2 hours of the last boat finishing. This modifies RRS 61. Protests shall be filed at the GBCA office.

14. SAFETY and WITHDRAWING PROCEDURES

14.1 Attention is called to RRS 4: Decision to Race, “The responsibility for a boat’s decision to participate in a race or to continue *racing* is hers alone.”

14.2 The Race Committee places high priority on accounting for every yacht participating in a race. It is imperative that any yacht withdrawing from a race makes its best and most persistent efforts to notify other parties of such withdrawal at the earliest opportunity. Withdrawing yachts should make every effort to contact the Race Committee and/or other nearby yachts to communicate the withdrawal via VHF channel 69. If radio communication is unavailable, send a text message or leave a voice message on the Race Committee phone number **303-819-6722**. Proper reporting of a withdrawal should include; yacht name, sail number and skipper's name.

15. TIME LIMIT

None, except we have an après race party scheduled at the GBCA clubhouse. This modifies RRS 35.

16. SCORING

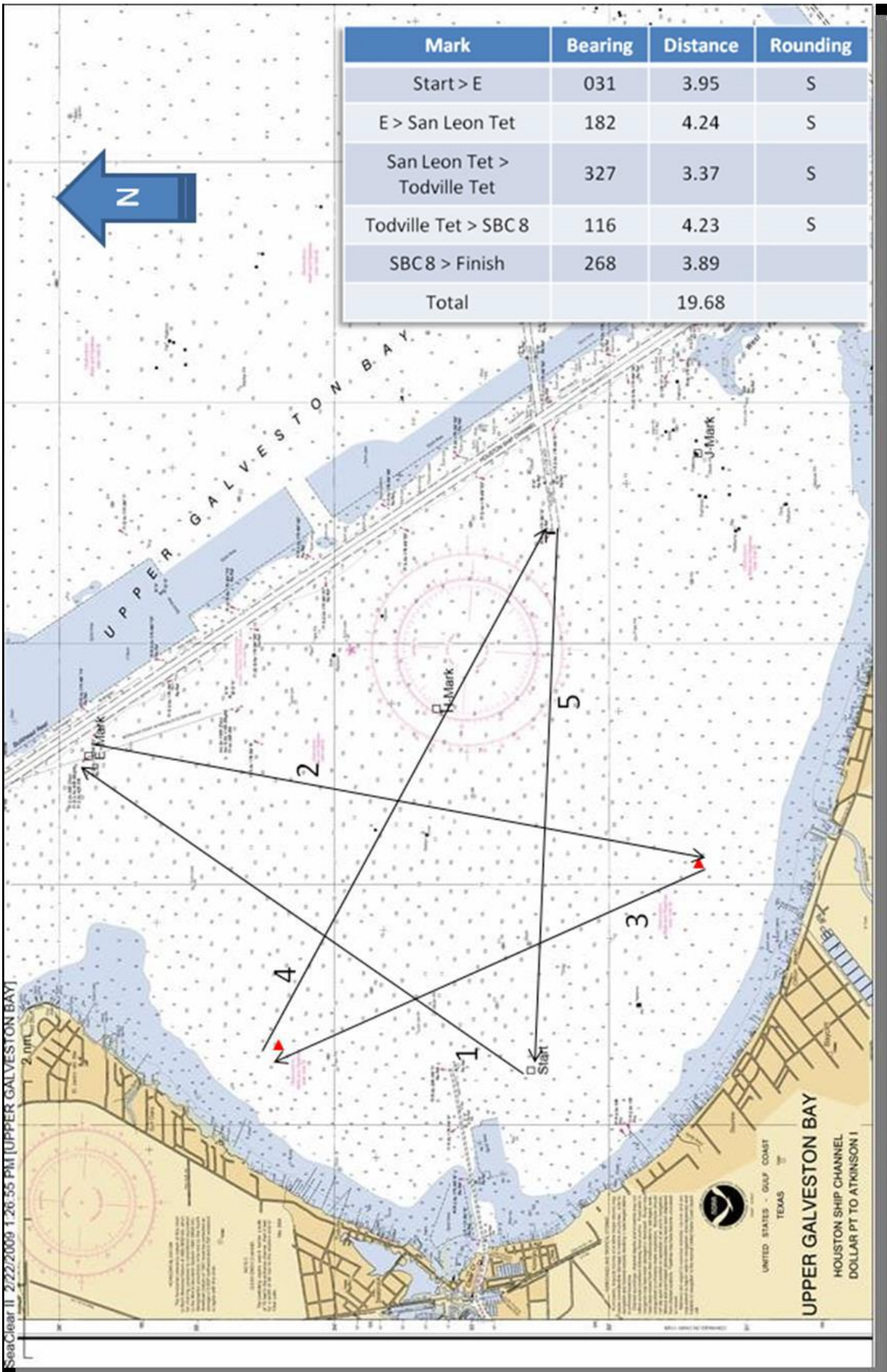
The Race Committee will score the race with reverse start (pursuit) style race using the performance handicapping racing formula, time on distance, for each yacht, as determined by the Race Committee. No races will be excluded from scoring. One race shall constitute a series.

In the event a second race can be run, the Race Committee will announce its intention to do so over VHF channel 69. The new starting hour for the second race will also be announced. Using Appendix A or B, replace 11:00:00 with the new start hour and add the minutes and seconds after 11:00:00 of the first race to determine your start time for the second race.

17. AWARDS PRESENTATION

Post-race party and awards presentation will be held at the GBCA office Saturday, December 1st after racing. Bring your chili cook-off entries for judging.

Appendix A - Course 1 "Star"



Appendix B - Course 1 "Star" start times

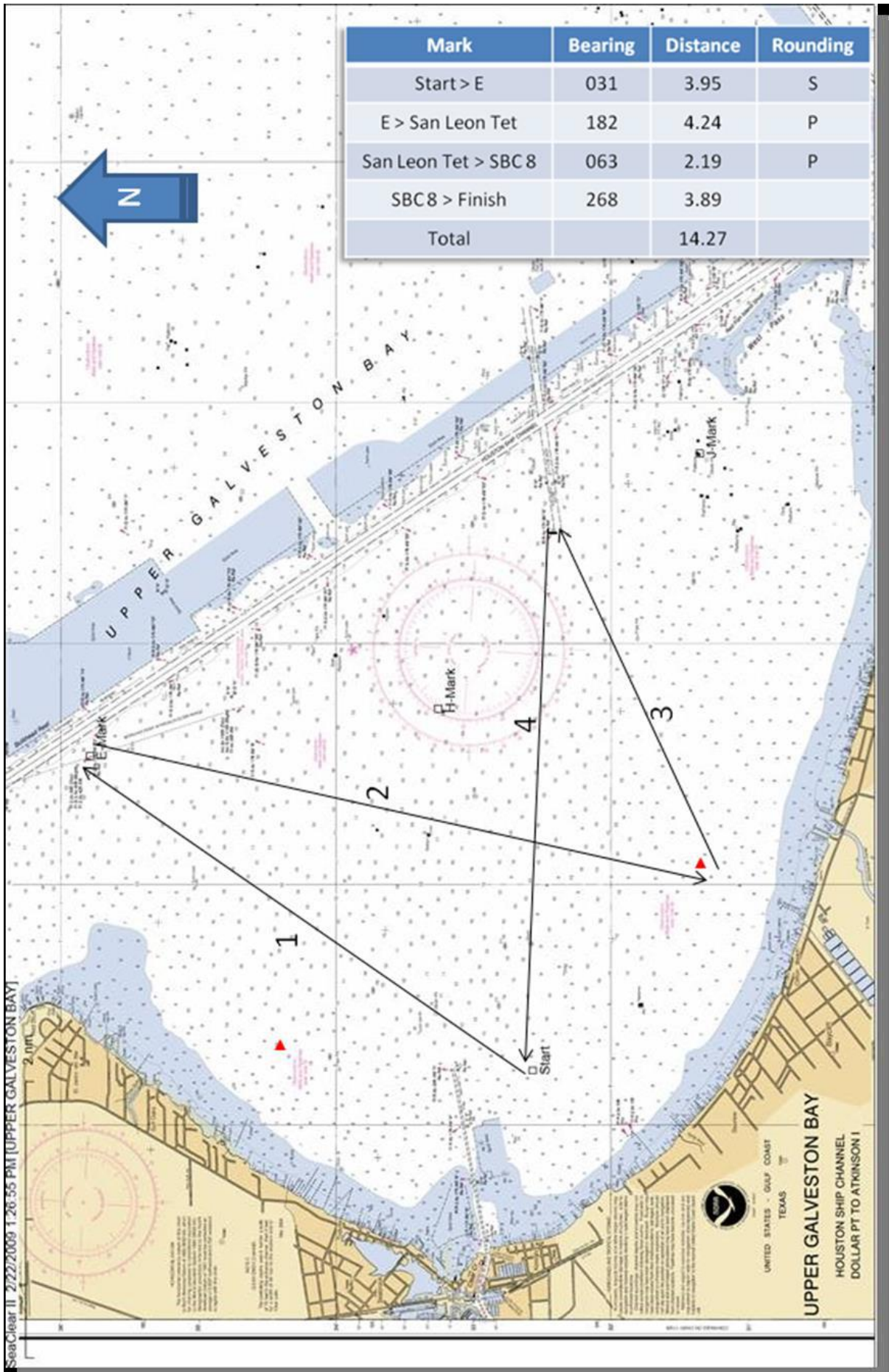
Start Time: 11:00:00

Distance: 19.68 MAX

Max PHRF: 280

Start	Sail#	Skipper	Boat Name	Class/Fleet	PHRF
11:00:59	102	John Lacy	Flying Kiss	PHRF NonSpin	277
11:26:53	40	Charles Blakely	Thumbelina	G.B.C.A. CruisingClub	198
11:27:33	4398	James Miller	Renaissance	PHRF NonSpin	196
11:32:08	28	Stephen Lack	Seven Star	PHRF NonSpin	182
11:34:46	1546	Karen Glass	Folka	PHRF Spin B(Non-Sprit)	174
11:34:46	578	Gary Thies	Student Driver	PHRF Spin B(Non-Sprit)	174
11:34:46	360	Bill Tarnick	Sunspot Baby	G.B.C.A. CruisingClub	174
11:34:46	338	Kevin Hayes	Hayes Rigging	PHRF Spin B(Non-Sprit)	174
11:35:05	133	Ronald Eddleman	Stellar of Course	G.B.C.A. CruisingClub	173
11:35:45	303	Bill Mead	Dragoon	PHRF Spin B(Non-Sprit)	171
11:38:42	044	Robert Best	Wine Knot	G.B.C.A. CruisingClub	162
11:39:21	na	Paul Britton	Rodeless Traveler	G.B.C.A. CruisingClub	160
11:39:41	30192	Mike Janota	Liftoff	PHRF NonSpin	159
11:43:17	31707	Tim Vogelsang	Tanura	PHRF NonSpin	148
11:43:17	584	Jim Foster	Big D	PHRF NonSpin	148
11:44:16	145	Gary Peterson	Sanity	G.B.C.A. CruisingClub	145
11:44:56	586	Marty Pedowicz	Hobgoblin	G.B.C.A. CruisingClub	143
11:44:56	21335	Walter Horton	Firewater	PHRF NonSpin	143
11:46:34	33406	William Abel	Alessandra	PHRF NonSpin	138
11:48:32	7	Brett Allred	Jackalope	PHRF Spin B(Non-Sprit)	132
11:52:28	31630	Robert Hunkins	Leopard	PHRF Spin B(Non-Sprit)	120
11:54:46	526	Darin Keever	BAG	G.B.C.A. CruisingClub	113
11:55:45	N/A	Christopher Kemp	Wild Thing	PHRF NonSpin	110
12:00:21	497	Jeff Kitterman	Vu 2	PHRF Spin A(Sprit)	96
12:06:15	296	J B Bednar	Stinger	PHRF Spin A(Sprit)	78
12:06:15	41	Dennis Kokkinis	Spitfire	PHRF Spin A(Sprit)	78
12:07:14	46864	Greg Casamayor	Joyride	PHRF Spin A(Sprit)	75
12:08:13	32581	Tom Sutton	Leading Edge	PHRF Spin B(Non-Sprit)	72
12:09:12	238	David Christensen	Airborne	PHRF Spin A(Sprit)	69
12:21:01	51316	Chris Waters	Second Wind	PHRF Spin A(Sprit)	33

Appendix A - Course 2 "Bowtie"



Appendix B - Course 2 "Bowtie" start times

Start Time: 11:00:00 Distance: 14.27 MAX PHRF: 280

Start	Sail#	Skipper	Boat Name	Class/Fleet	PHRF
11:00:43	102	John Lacy	Flying Kiss	PHRF NonSpin	277
11:19:31	40	Charles Blakely	Thumbelina	G.B.C.A. CruisingClub	198
11:19:59	4398	James Miller	Renaissance	PHRF NonSpin	196
11:23:19	28	Stephen Lack	Seven Star	PHRF NonSpin	182
11:25:13	1546	Karen Glass	Folka	PHRF Spin B(Non-Sprit)	174
11:25:13	578	Gary Thies	Student Driver	PHRF Spin B(Non-Sprit)	174
11:25:13	360	Bill Tarnick	Sunspot Baby	G.B.C.A. CruisingClub	174
11:25:13	338	Kevin Hayes	Hayes Rigging	PHRF Spin B(Non-Sprit)	174
11:25:27	133	Ronald Eddleman	Stellar of Course	G.B.C.A. CruisingClub	173
11:25:56	303	Bill Mead	Dragoon	PHRF Spin B(Non-Sprit)	171
11:28:04	044	Robert Best	Wine Knot	G.B.C.A. CruisingClub	162
11:28:33	na	Paul Britton	Rodeless Traveler	G.B.C.A. CruisingClub	160
11:28:47	30192	Mike Janota	Liftoff	PHRF NonSpin	159
11:31:24	31707	Tim Vogelsang	Tanura	PHRF NonSpin	148
11:31:24	584	Jim Foster	Big D	PHRF NonSpin	148
11:32:07	145	Gary Peterson	Sanity	G.B.C.A. CruisingClub	145
11:32:35	586	Marty Pedowicz	Hobgoblin	G.B.C.A. CruisingClub	143
11:32:35	21335	Walter Horton	Firewater	PHRF NonSpin	143
11:33:47	33406	William Abel	Alessandra	PHRF NonSpin	138
11:35:12	7	Brett Allred	Jackalope	PHRF Spin B(Non-Sprit)	132
11:38:04	31630	Robert Hunkins	Leopard	PHRF Spin B(Non-Sprit)	120
11:39:43	526	Darin Keever	BAG	G.B.C.A. CruisingClub	113
11:40:26	N/A	Christopher Kemp	Wild Thing	PHRF NonSpin	110
11:43:46	497	Jeff Kitterman	Vu 2	PHRF Spin A(Sprit)	96
11:48:03	296	J B Bednar	Stinger	PHRF Spin A(Sprit)	78
11:48:03	41	Dennis Kokkinis	Spitfire	PHRF Spin A(Sprit)	78
11:48:46	46864	Greg Casamayor	Joyride	PHRF Spin A(Sprit)	75
11:49:29	32581	Tom Sutton	Leading Edge	PHRF Spin B(Non-Sprit)	72
11:50:11	238	David Christensen	Airborne	PHRF Spin A(Sprit)	69
11:58:45	51316	Chris Waters	Second Wind	PHRF Spin A(Sprit)	33