



Cabrillo Series
PHRF, ORR, and One Design Fleets
San Diego, California
Winter 2019



Amendment 1

The below change supersedes the Sailing Instructions for this event:

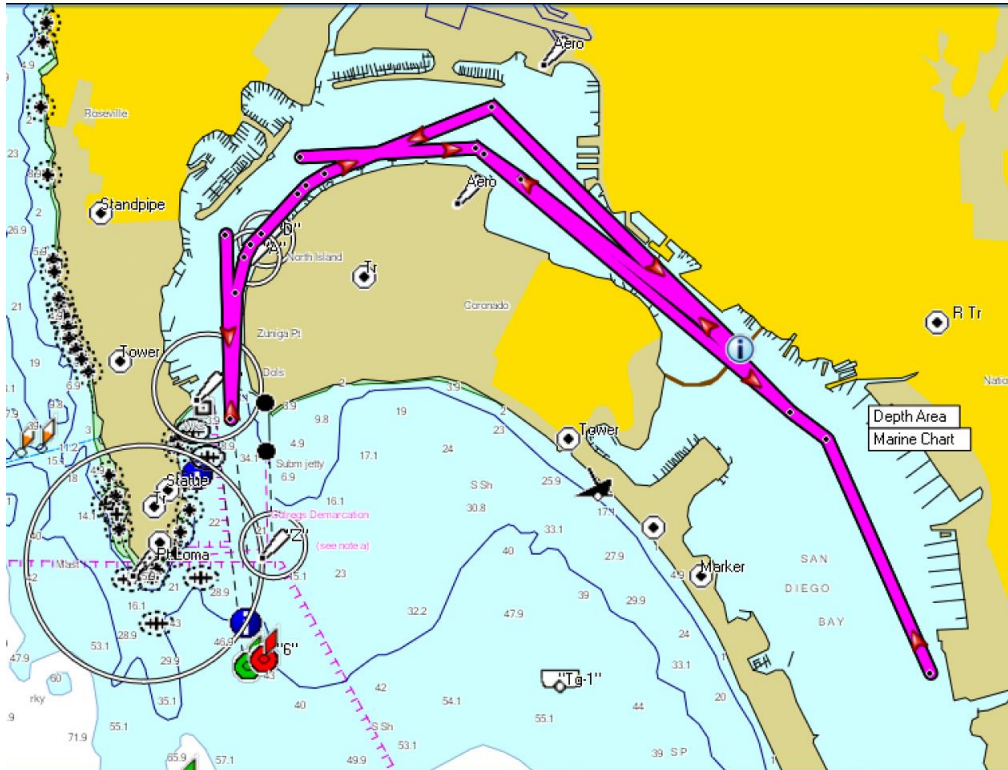
7. RACING AREA

- 7.8. In case of inclement weather, all classes will sail the same alternate course.
See Attachment E.

Start vicinity SD Bay Buoy 17
Leave SD Bay Buoy 12 to Starboard
Leave FM 19 to Starboard
Leave Coronado Bay Bridge Stanchion 19 to Starboard
Leave SD Bay Buoy 19 to Port
Leave SD Bay Buoy 26 to Starboard
Leave SD Bay Buoy 26a to Starboard
Round SD Bay Buoy 38 to Port
Leave SD Bay Buoy 26a to Port
Leave SD Bay Buoy 26 to Port
Leave FM 19 to Port
Leave SD Bay Buoy 12 to Starboard
Finish vicinity SD Bay Buoy 17
NOTE 1: Distance for handicap purposes is 28.2 nautical miles.

Attachment E

ALTERNATE (INCLEMENT WEATHER) COURSE – All Classes



START 17 – 12 **s** - FM19 **s** - BridgePier19 **s** – 19 **p** - 26 **s** - 26a **s** - 38 **p** – 26a **p** –

26 **p** - FM19 **p** - 12 **s**- 17 FINISH

28.2 nm