

# Addendum to Distance Course Sailing Instructions

## Courses, Marks and Finish

### A 1. MARKS

- A 1.1. The starting marks will be the race committee signal boat at the starboard end and an orange tetrahedron at the port end.
- A 1.2. The optional windward mark will be a yellow tetrahedron.
- A 1.3. The finishing marks will be the race committee signal boat at one end and a yellow cylinder at the other end. The yellow cylinder will be placed on the race committee signal boat's starboard side.
- A 1.4. The rounding mark on Course X ("Short Course") will be a yellow tetrahedron.
- A 1.5. The optional mark in Sailing Instruction 10.3 may be any shape or color.
- A 1.6. The optional inflatable mark used instead of an island in A 2.12. may be any shape or color. If used, a description of the mark will be posted on the notice board.
- A 1.7. Other marks of the course will be channel markers (Course B only), grouped rock markers (Course D, L & W only), single rock marker (Course W only) and islands as indicated in the course descriptions in A 2. See the course diagrams on Attachments A, B and C (Attachments A, B and C do not show the optional windward mark).

### A 2. COURSES

- A 2.1. Distance Courses will be either B, D, L, I, W, or X, or a combination of these (BD, LI, DID, etc.).
- A 2.2. **Course Diagrams (Attachments A, B and C)** – See the course diagrams on Attachments A, B and C. Attachments A, B and C do not show the optional windward mark. The written course descriptions below will control when determining the course.
- A 2.3. **Optional Windward Mark** -- At the option of the race committee, a mark may be set to windward of the starting line to create a windward first leg. If the optional "windward mark" is used, the race committee will indicate the required side on which the windward mark shall be left by posting either the letter "P" for port or "S" for starboard. The bearing to the mark will be indicated after the "@" symbol. See Diagram 1 for an example. The optional windward mark will be a mark of the course only on the first leg of the course and shall be rounded only once.
- A 2.4. **Course B ("Bridge" Course)** -- Sail from the starting line (or optional windward mark) toward the bridge leaving "Bear" Island to STARBOARD. Pass any RED and GREEN channel markers on the required side. A channel marker that is missing or has drifted substantially from its normal position does not have a required side. Round the last GREEN channel marker nearest the bridge leaving it to PORT. Sail back to the finishing line, passing the RED and GREEN channel markers on their required side, and leaving "Bear" Island to PORT.
- A 2.5. **Course D ("Dam" Course)** -- Sail from the starting line (or optional windward mark) toward the dam leaving "Luau" Island, "Stone" Island and the "Grouped" Rock Markers (northeast of "Luau" Island) to PORT. Round "Goose" Island to PORT. Sail toward "Luau" Island leaving the "Grouped" Rock Markers, "Luau" Island and "Stone" Island to PORT and continue sailing back to the finishing line. The single rock marker east of "Luau" Island and "Stone" Island is not a mark on Course D and does not have a required side.
- A 2.6. **Course L ("Low Water Dam" Course)** -- Sail from the starting line (or optional windward mark) toward "Stone" Island (between Elm Hill and Hamilton Creek) leaving it, "Luau" Island and the "Grouped" Rock Markers (northeast of "Luau" Island) to STARBOARD. Sail toward the dam rounding "Goose" Island to PORT. Sail back toward "Luau" Island leaving the "Grouped" Rock Markers, "Luau" Island and "Stone" Island to PORT. Continue by sailing back to finishing line.
- A 2.7. **Course I ("Island" Course)** -- Sail from the starting line (or optional windward mark) toward "Bear" Island and leave it to STARBOARD. Then sail a southwesterly heading toward "Pig" Island (the island south of "Bear" and "Raccoon" Islands). Round "Pig" Island to PORT. Sail back to the finishing line leaving "Bear" Island to PORT.
- A 2.8. **Course W ("Wednesday Night" Course)** -- This course will be used only if the water level is sufficient. Sail from the starting line (or optional windward mark) to the "Single" Rock Marker (white buoy) that is east of "Luau" Island and "Stone" Island. Round the "Single" Rock Marker to PORT. Continue sailing leaving all of the "Grouped" Rock Markers to PORT. Sail back to the finishing line leaving "Luau" Island and "Stone" Island to PORT.

- A 2.9. **Course X ("Short" Course)** – Course X is a short course that uses an inflatable mark as the rounding mark (see A 1.4 for a description of the mark). If this course is used, the inflatable mark will be placed in the general area north of "Bear" Island and east of "Stone" Island. Sail from the starting line (or optional windward mark) to the inflatable mark. Round the inflatable mark to PORT and sail back to the finishing line.
- A 2.10. **Single Rock Marker** -- The single rock marker east of "Luau" Island and "Stone" Island has a required side only on Course W.
- A 2.11. **Combination Courses** (BD, LI, DID, etc.) -- When the course to be sailed is a combination of two or more courses, sail them as one course without returning to the starting/finishing line between courses. For example if the course is LI, sail Course L exactly as stated above, but instead of returning to the starting/finishing line, continue sailing and sail Course I exactly as stated above.
- A 2.12. **Optional Inflatable Mark Instead of Island** – At the option of the race committee, an inflatable mark may be used as the rounding mark instead of the island indicated in any of the course descriptions above. If used, a written notice will be posted on the notice board describing the course(s) affected and giving a description of the mark to be used.
- A 2.13. **Course Designation** – The course will be displayed on the starboard side of the race committee boat before the warning signal of each class (see Diagram 1 below for an example). Courses may be different for each class and each race.

#### DIAGRAM 1–Course Designation Example

L @225 S

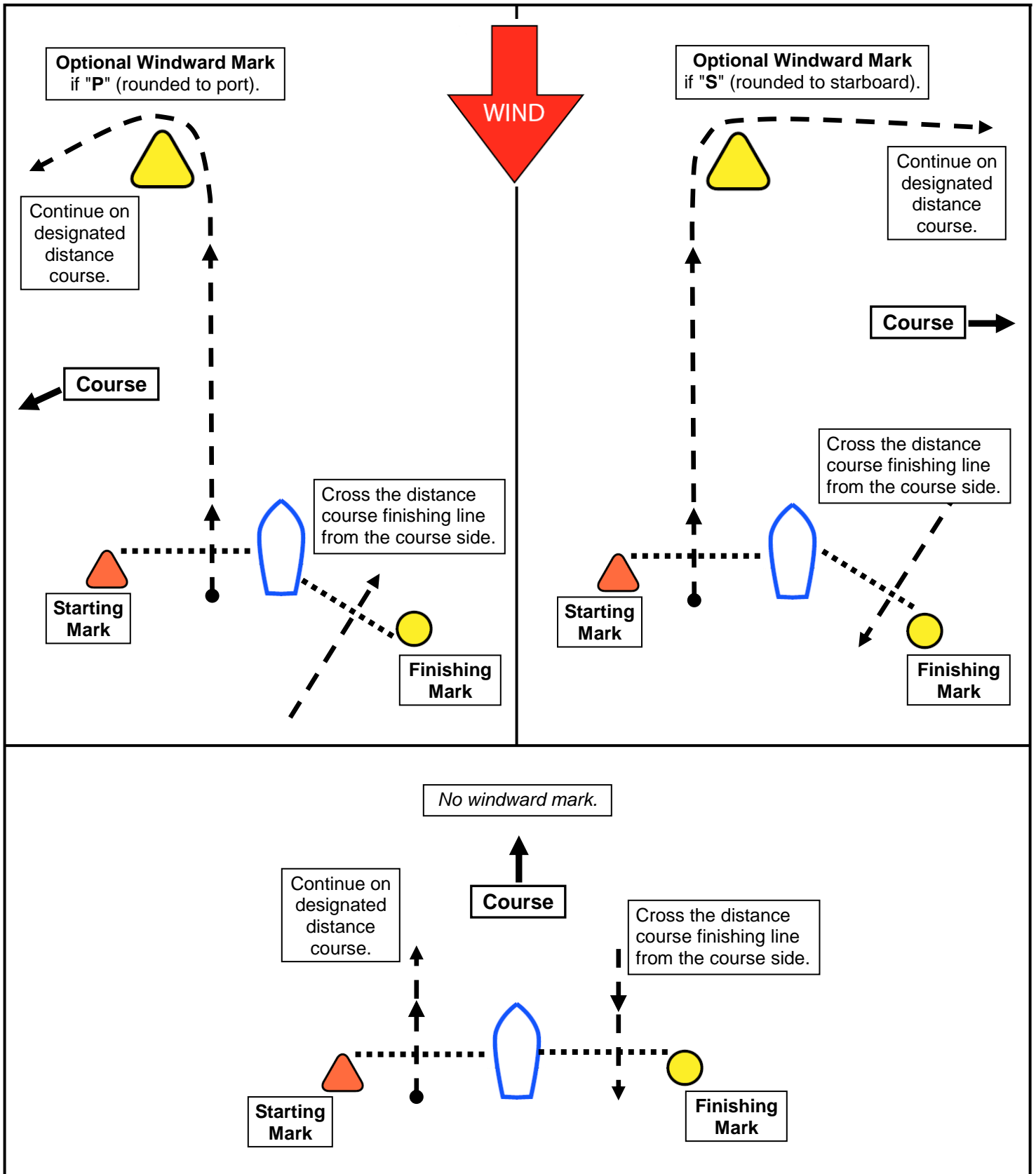
In this example, the course is L ("Low Water Dam"). The **windward mark** is at an approximate bearing of 225° from the race committee boat and is rounded to starboard (leave the mark on your starboard side).

- A 2.14. **The distance course starting and finishing lines will be separate lines set on opposite sides of the race committee boat.** See the attached "Starting Line, Finishing Line and Optional Windward Mark Examples."

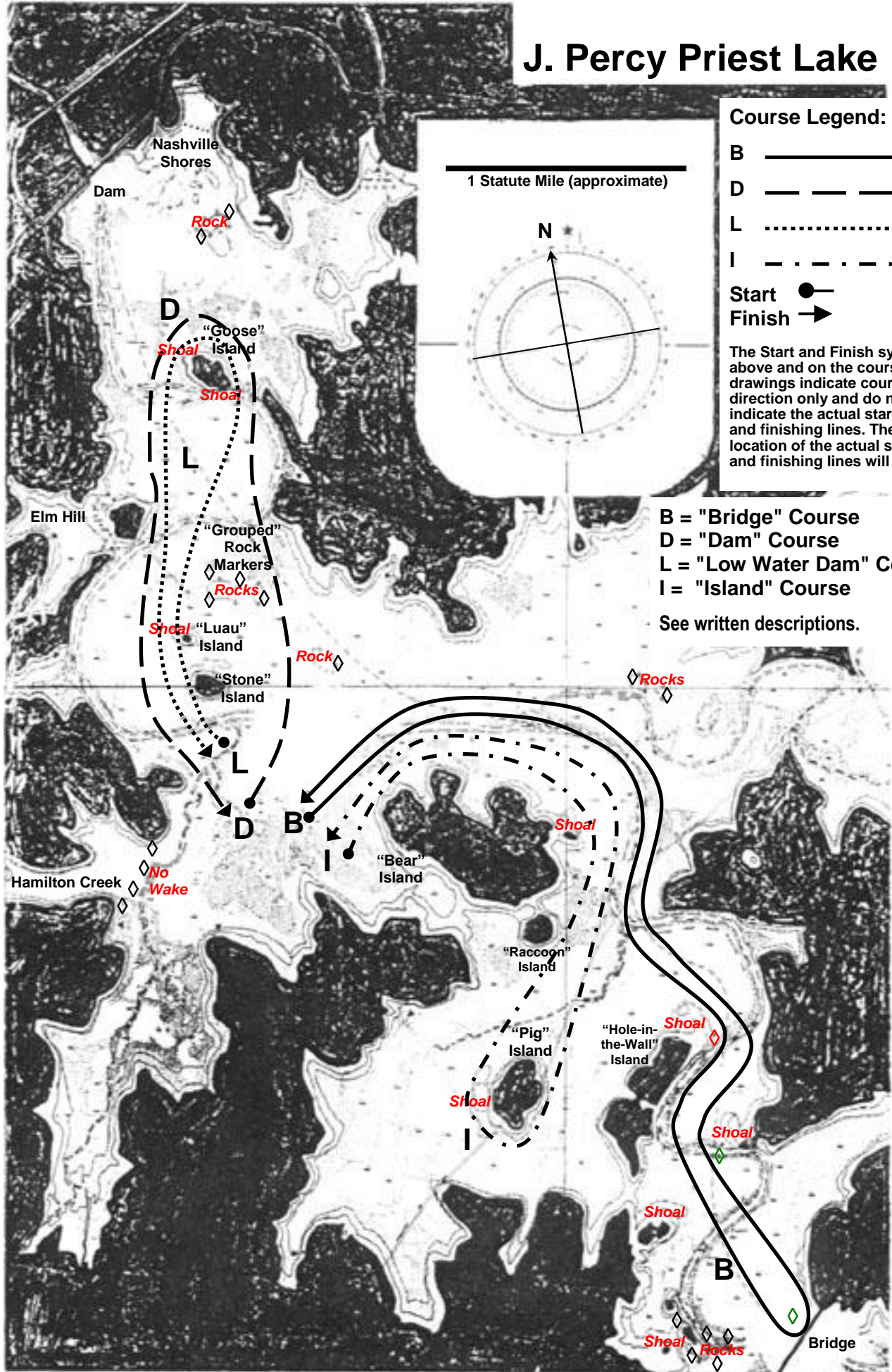
- A 3. THE FINISH** – The finishing line will be between a staff displaying a blue flag on the race committee signal boat at one end and the course side of the other finishing mark at the other end. See A 1.3 for a description of the other finishing mark. As stated in the definition of *Finish* in the RRS, cross the finishing line "from the course side" regardless of which side of your boat the other finishing mark is on.

# Starting Line, Finishing Line and Optional Windward Mark Examples for Distance Courses

EXAMPLES ONLY--Please read Sailing Instructions A 1, A 2.3, A 2.13, A 2.14 and A 3.



# J. Percy Priest Lake



### Course Legend:

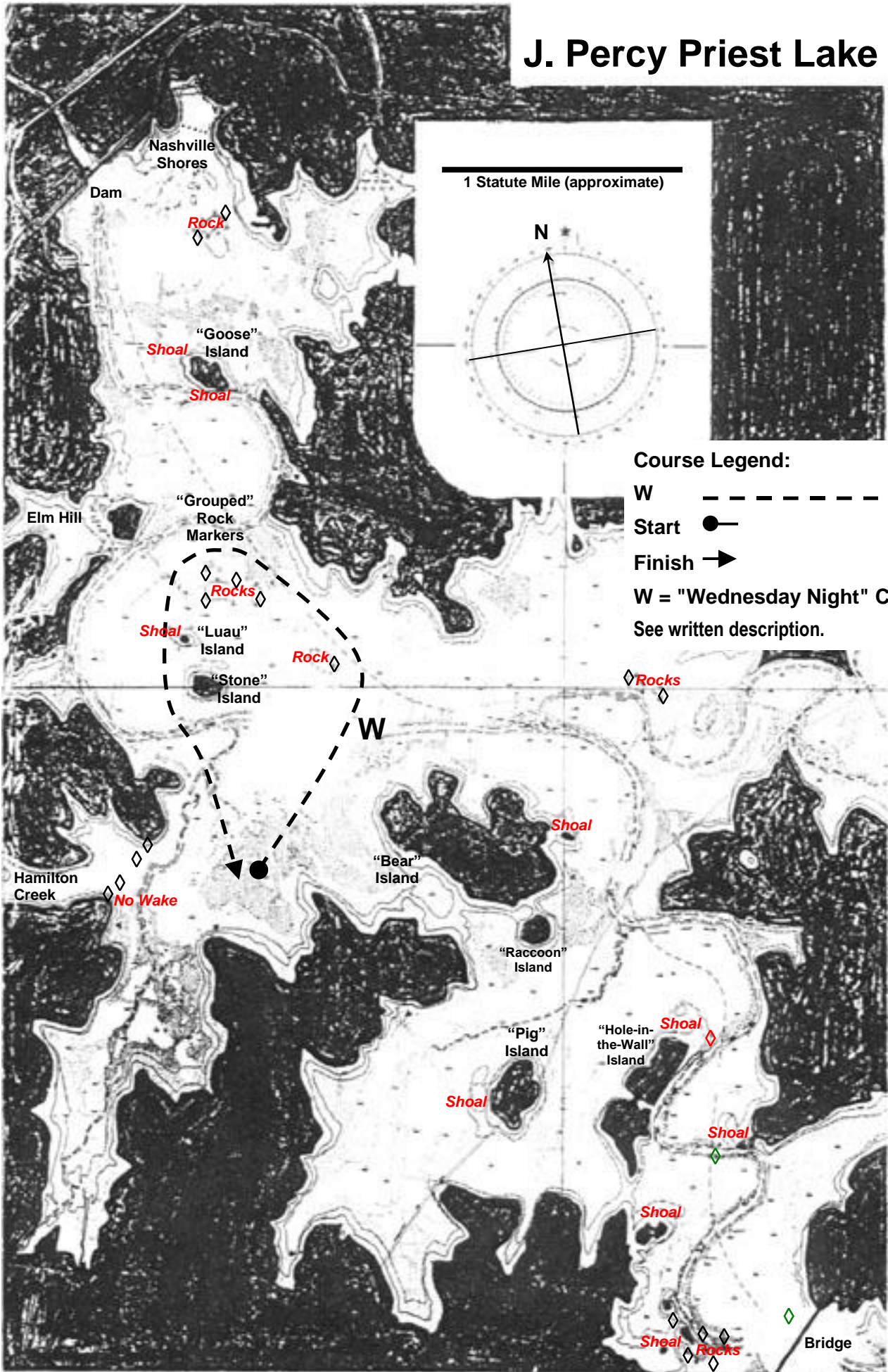
- B —————
- D - - - - -
- L .....
- I - . - . - .

Start ●  
Finish →

The Start and Finish symbols above and on the course line drawings indicate course direction only and do not indicate the actual starting and finishing lines. The location of the actual starting and finishing lines will vary.

B = "Bridge" Course  
 D = "Dam" Course  
 L = "Low Water Dam" Course  
 I = "Island" Course  
 See written descriptions.

# J. Percy Priest Lake



# J. Percy Priest Lake

