



SAILFEST
JUNIOR SAILING CHAMPIONSHIPS
Sarasota Youth Sailing
& Sarasota Sailing Squadron
April 6 & 7, 2019



RED, WHITE AND BLUE FLEET
SAILING INSTRUCTIONS

Version 2

1 RULES

- 11** The regatta will be governed by the rules as defined in *The Racing Rules of Sailing*.
- 12** SI breaches for which a discretionary penalty may be applied by the protest committee are designated by “[DP]” Discretionary Penalty.

2 NOTICES TO COMPETITORS

- 21** Notices to competitors will be posted on the official notice board located at the Squadron Pavilion.

3 CHANGES TO SAILING INSTRUCTIONS

- 31** Any change to the sailing instructions will be posted before 0900 on the day it will take effect, except that any change to the schedule of races will be posted by 1800 on the day before it will take effect.

4 SIGNALS MADE ASHORE

- 41** Signals made ashore will be displayed ashore from the Squadron flag pole.
- 42** When flag AP is displayed ashore, ‘1 minute’ is replaced with ‘not less than 60 minutes’ in the race signal AP.

5 SCHEDULE OF RACES


- 51** Races are scheduled as follows:

| | | |
|------------------|-----------|----------------------|
| Saturday April 6 | 0800-0900 | Registration |
| | 0915 | Competitors Briefing |
| | 1030 | First Warning |
| Sunday April 8 | 0930 | First Warning |

52 On the last scheduled day of racing no warning signal shall be made after 1400.

6 CLASS FLAGS

61 Class flags are as follows:

| | | |
|----------------|---------------------------|---|
| OPTI RWB Fleet | OPTI Logo on a white flag |  |
|----------------|---------------------------|---|

7 THE COURSES

71 The course diagrams are on the pages following SI 16. They show the courses, the order in which marks are to be passed, and the side on which each mark is to be left.

8 MARKS

81 Marks will be Yellow tetrahedrons.

82 Change marks will be green tetrahedrons.

83 The start mark will be a yellow cylinder.

84 The finis mark will be a ball.

9 THE START

91 Races will be started by using RRS 26.

92 The starting line will be between a staff displaying an orange flag on the race committee vessel and the course side of the starting mark.

93 Boats whose warning signal has not been made shall avoid the starting area during the starting sequence of other races. [DP]

94 A boat that does not start within 4 minutes after her starting signal will be scored Din Not Start without a hearing. This changes RRS A4 and A5.

10 CHANGE OF THE NEXT LEG OF THE COURSE

101 To change the next leg of the course, the race committee will lay a new mark (or move the finishing line) and remove the original mark as soon as practicable. When in a subsequent change a new mark is replaced, it will be replaced by an original mark.

11 THE FINISH

111 The finishing line will be between a staff displaying an orange flag on the race committee vessel and the course side of the finishing mark.

12 TIME LIMITS

121 The following time limits will apply:

| | |
|-----------------------------------|--|
| Race Time Limit Is 60 minutes | Time limit for the first boat to sail the course and finish. |
| Finishing Window is 20 minutes | Time limit for boats to finish after the first boat sails the course and finishes. |

122 Boats failing to finish within the Finishing Window shall be scored Did Not Finish without a hearing. This changes RRS 35, A4 and A5.

13 PROTESTS AND REQUESTS FOR REDRESS

131 Protest forms are available at the race office. Protests and requests for redress or reopening shall be delivered there within the appropriate time limit.

132 For each class, the protest time limit is 60 minutes after the Signal Boat docks or the race committee signals no more racing today ashore, whichever is later.

133 Notices will be posted no later than 10 minutes after the protest time limit to inform competitors of hearings in which they are parties or named as witnesses and where the hearings will be held.

134 Notices of protests by the race committee, technical committee or protest committee will be posted to inform boats under RRS 61.1(b).

135 On the last scheduled day of racing a request for redress based on a protest committee decision shall be delivered no later than 30 minutes after the decision was posted. This changes RRS 62.2.

14 SAFETY REGULATIONS

141 Check-In with the Signal Boat before the initial warning signal of the first race of each day by sailing near the Signal Boats stern on a starboard tack and hailing your sail number until acknowledged by the Signal Boat. Failure to check in may result in a penalty. [DP]

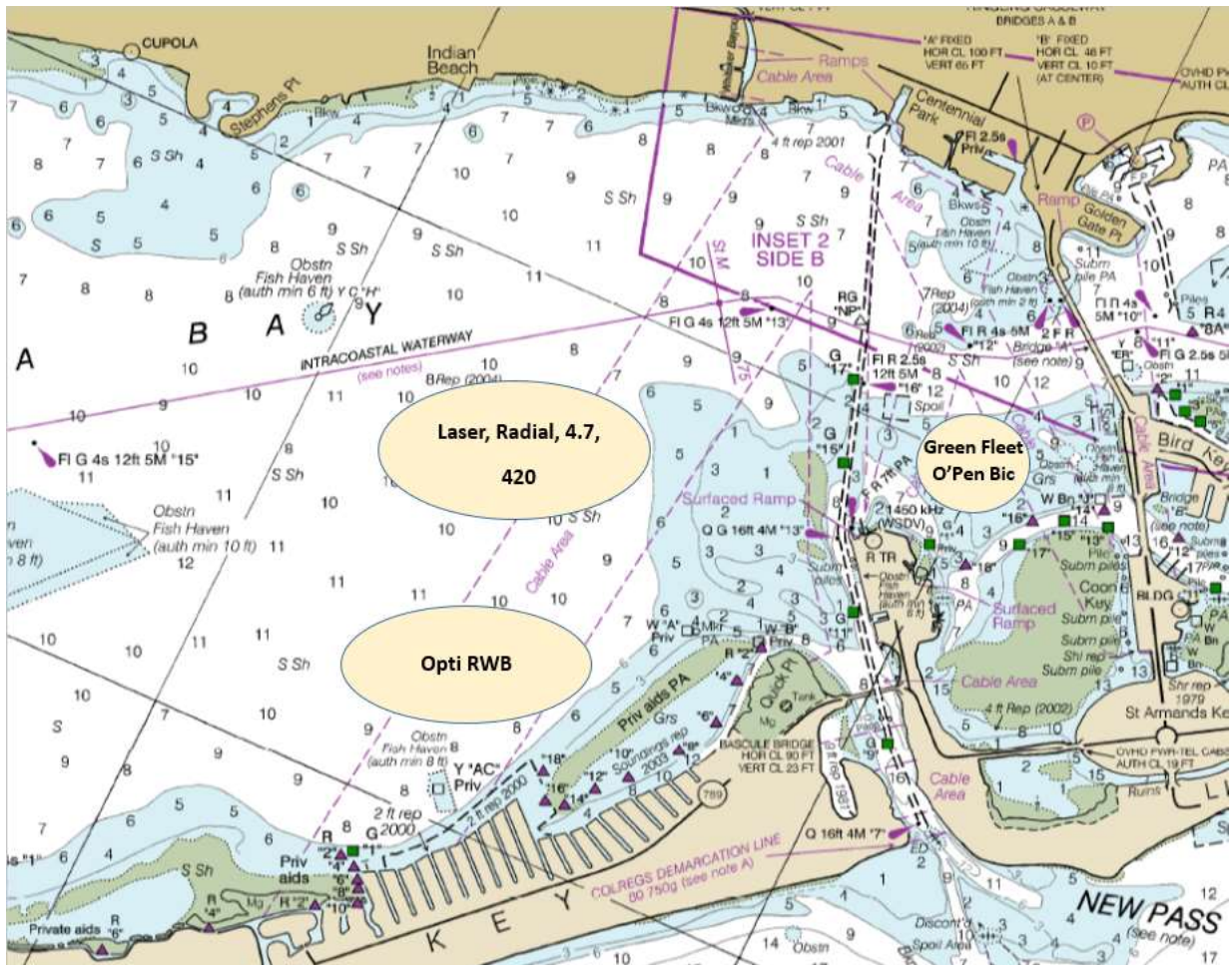
142 A boat retiring from the race shall notify a Race Committee vessel before leaving the course, or, when that is not possible, notify the Race Office immediately upon arriving ashore. [DP]

15 SUPPORT BOATS

151 Team leaders, coaches, and other support persons shall stay outside areas where boats are racing from the time of the preparatory signal for the first class to start until all boats have finished or retired or the race committee signal postponement or abandonment. [DP]

- 152 All coach boats and other support boats shall come to the aid of any competitor in distress or requesting assistance. [DP]
- 153 All support boats shall comply with US Coast Guard regulations. [DP]
- 16 **PRIZES**
- 161 Prizes will be given to the top finishers in each fleet.

RACING AREA



COURSE DIAGRAM

Windward-Leeward, Leeward Finish

Course W – Windward/Leeward, Leeward Finish

Mark Rounding Order: Start – 1 – 1a – 2P – Finish

Course W2 – Windward/Leeward, Leeward Finish

Mark Rounding Order: Start – 1 – 1a – 2S/2P – 1 – 1a – 2P – Finish

