



## SAILING INSTRUCTIONS

Laser Fleet 10



### 1. Rules

1.1 The regatta will be governed by the Racing Rules of Sailing (RRS), the prescriptions of US SAILING, the rules of the International Laser Class Association (ILCA) and this Notice Of Race, except as any of these are changed by the Sailing Instructions or any appendices to the Sailing Instructions.

1.2 The organizing authority is the Severn Sailing Association and Laser Fleet 10 in conjunction with the International Laser Class Association (ILCA). This event will be held at Severn Sailing Association, located at 311, First Street, Annapolis, MD 21403, USA (Office: 410-268-8744).

1.3 A minimum of 15 Radial entries was received by the pre-registration deadline (04/27/19), and the Radial fleet shall be given a separate start and shall be scored separately from the Standard Rig fleet (Rig-Swapping Rule turned off). This changes ILCA Class Rule 27(d) by permission of the International Laser Class Association of North America.

### 2. Advertising

2.1 Competitor advertising will be restricted to the current ISAF Regulation 20 and the Class Rules.

### 3. Eligibility and Entry

All competitors must meet the eligibility requirements as stated in the Notice of Race and have filed valid entries in accordance with the Notice of Race.

### 4. Notices To Competitors

Notices to competitors will be posted on the official notice board located under the outer staircase on the lower level of the SSA clubhouse.

### 5. Changes In Sailing Instructions

Any change in the sailing instructions will be posted before 0900 on the day it will take

effect, except that any change in the schedule of races will be posted before 2000 on the day before it will take effect.

## **6. Signals Made Ashore**

6.1 Signals made ashore will be displayed on the flagpole in front of the SSA clubhouse.

6.2 When Flag AP is displayed ashore, '1 minute' is replaced with 'not less than 60 minutes' in Race Signal AP.

## **7 Schedule of Races (see NOR appendix page for Social Events Schedule)**

7.1 Racing is scheduled as follows:

### ***Friday, May 10***

1000 Club property will be open for boat storage and practice.

Enter property via gate at 311 First Street. Look for the SSA Burgee.

### ***Saturday, May 11***

0730-0930 Check-In at clubhouse

0945 Skippers Meeting

1100 First Warning Signal, races to follow

### ***Sunday, May 12***

1030 First Warning Signal, races to follow

Awards ASAP after last race

7.2 Five to eight races are scheduled for the regatta. The number of races held each day will be at the discretion of the race committee.

7.3 No warning signal will be made after 1500 on the final day of the regatta.

## **8. Racing Area**

Racing will take place in areas "A", "B" or "C" as shown in SI Attachment 2. Racing will take place in area "A" unless a notice is posted.

## **9. Courses**

9.1 The diagrams in Attachment 1 and 2 show the courses, including the approximate angles between legs, the order in which marks are to be passed, and the side on which each mark is to be left. The course length will be adjusted to target a race time of 30-45 minutes.

9.2 No later than the warning signal, the race committee signal boat will display the approximate compass bearing from the starting line to the first mark.

9.3 No later than the warning signal, the race committee will designate the course by displaying one or two letters and a number on the course board and the approximate compass bearing of the first leg.

9.4 No later than the warning signal, the order of starts will be displayed.

9.5 No later than the warning signal, the race committee may display code flag "C" with several sound signals to indicate that mark 1 will be a new mark as described in SI 10.4.

## **10. Marks**

10.1 Marks 1, 1a, 2, 3s, 3p, and 3 will be orange cylinders.

10.2 Marks S and SF will be a yellow cylinders.

10.3 Marks F and RF will be an orange sphere (hippity hop).

10.4 New marks, as provided in SI 13 will be orange tetrahedrons.

## **11. The Start**

11.1 Races will be started in accordance with RRS 26.

11.2 The Class Flags will be:

Laser (white flag with a red Laser logo);



Laser Radial (red flag with a white Laser Logo).



11.3 The starting line will be between a staff or halyard displaying an orange flag on the race committee signal boat and the course side of the yellow cylinder, or the staff displaying an orange flag on a pin end race committee boat.

11.4 No race shall be started unless there is a minimum consistent wind speed of 3 knots throughout the racing area.

11.5 A boat shall not start later than 5 minutes after her starting signal. Such boat will be scored DNS, this changes RRS A4.1.

11.6 The race committee intends to hail premature starters. A boat may not base a request for redress on failure of the race committee to hail any sail or hull numbers; failure of a boat to hear a hail; a boat's position in the sequence of hails; promptness of the hail. This changes RRS 62.1(a)

## **12. Change Of Course**

12.1 A change of course will be signaled in accordance with RRS 33. Any mark to be rounded after rounding the new mark may be relocated to maintain the original course configuration. When in a subsequent change of course a new mark is replaced, it will be replaced by an original mark.

## **13. The Finish**

13.1 The finishing line will be between staff or halyard displaying an orange flag (Basic & S Finish) or Blue Flag (R and F Finish) on a race committee boat and the course side of the finishing mark.

## **14. Abandonment & time limit**

14.1 The time limit for a race will be 2.5 hours. Boats failing to finish within 30 minutes after the first boat finishes or within the time limit, will be scored DNF. This changes RRS 35 and A4.1.

14.2 The Race Committee will abandon any race it judges not to be a fair test of sailing skill.

## **15. Measurement & Equipment**

15.1 Each competitor is responsible for ensuring their equipment is in compliance with the ILCA rules. Failure to do so may result in disqualification from the regatta. Section 3.1 of the NOR will be enforced and other measurement and equipment checks may be done at any time during the regatta.

## **16. Protests**

16.1 Competitors intending to protest shall inform the Race Committee immediately after finishing and before communicating with coaches or spectators. Boats should first sail to the non-course side of the Finish Boat and report to the Finish Boat. Boats that do not finish shall report their intent to protest to any Race Committee Boat at the first possible opportunity. This adds to RRS 61.1(a).

16.2 Protests should be lodged at Severn Sailing Association within 45 minutes of the time the Race Committee Finish Boat docks. The Race Committee will post the docking (beginning of protest) time on the official notice board as soon as practical after docking.

16.3 Protests will be heard in the approximate order of receipt. The time and place of protest hearings will be posted within 30 minutes after the end of the protest time. This is the notice required by RRS 63.2. Hearings will be held on the 2nd floor of the SSA clubhouse unless an alternate location is posted.

## **17. Scoring**

17.1 The Low Point Scoring System, Appendix A2, will be used except as modified below.

17.2 A minimum of one race must be completed to constitute a regatta.

17.3 There will be one throwout when six or more races are sailed.

17.4 NA Masters handicap system will be in place to determine the overall series winner. For each race counted in the competitor's final score, add the following points: Apprentices, 3 points; Masters, 2 points; Grand Masters, 1 point; Great Grand Masters, 0 points. Results are recalculated and competitors ranked from lowest to highest score after handicap points have been added.

## **18. Safety**

18.1 Life jackets shall be worn at all times while racing, failure to do so will result in disqualification. This changes RRS 40.

18.2 A competitor that withdraws from a race or intends not to start a race shall inform the nearest safety or race committee boat as soon as possible.

## **19. Disclaimer of Liability**

19.1 Competitors participate in the regatta entirely at their own risk. See RRS 4, Decision to Race. The organizing authority will not accept any liability for material damage or personal injury or death sustained in conjunction with, prior to, during, or after the regatta.

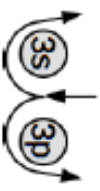
## **20. Trophies**

20.1 Awards for each fleet will be given to the first overall, 1<sup>st</sup>, 2<sup>nd</sup>, 3<sup>rd</sup> in each division and 1st female overall.

## SI ATTACHMENT 1 - COURSES

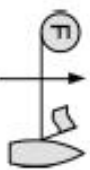
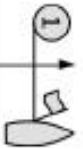

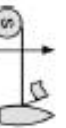
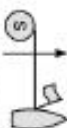
The following diagrams indicate show the order, rounding side, approximate angles of the courses that may be sailed. In the below table, the course designation is followed a colon and then the mark rounding order for that course. At a gate, if only one mark is set, that mark shall be rounded to port.

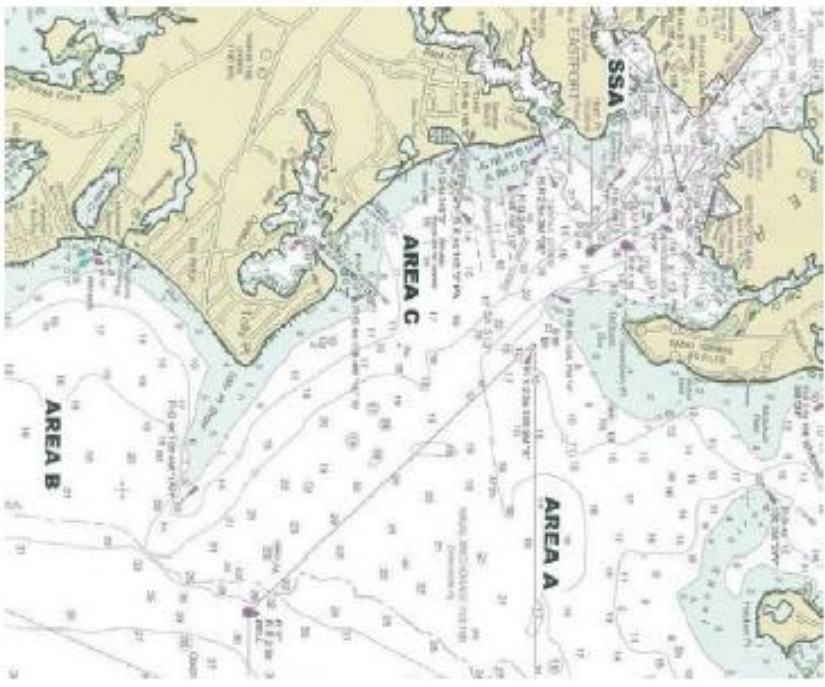
Flag G (Gate):



When the race committee displays Flag G prior to the warning, then the leeward mark will be a gate. Boats rounding the leeward mark to go upwind shall round either leeward mark.

	Basic Finish	R Finish	S Finish	F Finish
<b>L</b>	<p><b>L2:</b> Start/SF-1-3- 1-Finish/SF</p> <p><b>L3:</b> Start/SF-1-3- 1-3- 1-Finish/SF</p>	<p><b>LR2:</b> Start/S-1-3- 1-3-S -Finish/RF</p> <p><b>LR3:</b> Start/S-1-3- 1-3-1-S-Finish/RF</p>	<p><b>LS3:</b> Start/3-1-3- 1-Finish/3</p> <p><b>LS3:</b> Start/3-1-3- 1-3- 1-Finish/3</p>	<p><b>LF2:</b> Start/S-1-3- 1-Finish/F</p> <p><b>LF3:</b> Start/S-1-3- 1-3- 1-Finish/F</p>
<b>LA</b>	<p><b>LA2:</b> Start/SF-1-1a- 3- 1-1a-Finish/SF</p> <p><b>LA3:</b> Start/SF-1-1a- 3-1-1a-3- 1-1a-Finish/SF</p> <p>Start/Finish Area</p>	<p><b>LAR2:</b> Start/S-1-1a-3- 1-1a-3-S-Finish/RF</p> <p><b>LAR3:</b> Start/S-1-1a-3- 1-1a-3-1-1a-S- Finish/RF</p>	<p><b>LAS2:</b> Start/3-1-1a-3- 1-1a-Finish/3</p> <p><b>LAS3:</b> Start/3-1-1a-3- 1-1a-3- 1-1a-Finish/3</p>	<p><b>LAF2:</b> Start/S-1-1a-3- 1-1a-Finish/F</p> <p><b>LAF3:</b> Start/S-1-1a-3- 1-1a-3- 1-1a-Finish/F</p>
<b>TL</b>	<p><b>TL2:</b> Start/SF-1-2-3- 1-Finish/SF</p> <p><b>TL3:</b> Start/SF-1-2-3- 1-3- 1-Finish/SF</p> <p>Start/Finish Area</p>	<p><b>TLR2:</b> Start/S-1-2-3- 1-3-S-Finish/RF</p> <p><b>TLR3:</b> Start/S-1-2-3- 1-3-1-3-S- Finish/RF</p>	<p><b>TLS2:</b> Start/3-1-2-3- 1-Finish/3</p> <p><b>TLS3:</b> Start/3-1-2-3- 1-3- 1-Finish/3</p>	<p><b>TLF2:</b> Start/S-1-2-3- 1-Finish/F</p> <p><b>TLF3:</b> Start/S-1-2-3- 1-3- 1-Finish/F</p>

Upwind Finishes	
	<p>Basic Finish </p> <p>S Finish </p>
<b>W</b>	<p>Finish Area </p> <p>W2: Start/S-1-3-Finish/F</p> <p>W3: Start/S-1-3-1-3-Finish/F</p> <p>WS2: Start/S-1-3-Finish/1</p> <p>WS3: Start/S-1-3-1-3-Finish/1</p>
<b>WA</b>	<p>Finish Area </p> <p>W2: Start/S-1-1a-3-Finish/F</p> <p>W3: Start/S-1-1a-3-1-1a-3-Finish/F</p> <p>WAS2: Start/S-1-1a-3-Finish/1</p> <p>WAS3: Start/S-1-1a-3-1-1a-3-Finish/1</p>
<b>TW</b>	<p>Finish Area </p> <p>TW2: Start/S-1-2-3-Finish/F</p> <p>TW3: Start/S-1-2-3-1-3-Finish/F</p> <p>TWS2: Start/S-1-2-3-Finish/1</p> <p>TWS3: Start/S-1-2-3-1-3-Finish/1</p>



SI ATTACHMENT 2 - RACING AREAS