



# 2019 WIND Youth Regatta

July 20-21, 2019

Columbia Gorge Racing Association  
Cascade Locks, Oregon

## SAILING INSTRUCTIONS

### 1 RULES

- 1.1 The regatta will be governed by the *The Racing Rules of Sailing* as modified by the NWYRC Notice of Series, the Notice of Race, and these Sailing Instructions.
- 1.2 The US Sailing prescriptions to rules 60, 63.2 and 63.4 shall not apply
- 1.3 Class rules shall be observed and enforced by the competitors, except that competitors may use a “club sail” in place of a class approved sail provided it is of the same dimensions, of similar construction, and provides no added advantage.
- 1.4 Racing Rule 40 is changed as follows: Competitors shall wear USCG approved personal flotation devices, except briefly while changing or adjusting clothing or personal equipment. Wet suits and dry suits are not personal flotation devices (code flag Y need not be displayed).
- 1.5 In case of conflict between the Notice of Race and the Sailing Instructions, the Sailing Instructions will prevail. This changes rule 63.7.

### 2 NOTICE TO COMPETITORS

- 2.1 Notices to competitors will be posted on the official regatta notice board located on the exterior of the Regatta Office.

### 3 CHANGES TO SAILING INSTRUCTIONS

- 3.1 Changes to the SIs will be posted no later than 20 minutes after the close of the Competitors Meeting on the day it takes effect, except that any change to the schedule of races will be posted no later than the end of the protest time limit on the day before it will take effect.

### 4 SIGNALS MADE ASHORE

- 4.1 Signals made ashore will be displayed from the flagpole located on the CGRA Race Office.
- 4.2 When flag AP is displayed ashore, the warning signal for the next race will be made not less than 30 minutes after AP is lowered.
- 4.3 When AP is displayed ashore over a class flag, or flags. Those particular classes are postponed. All other classes will race as scheduled.

### 5 SAFETY

- 5.1 Prior to the first warning signal of the day, each competitor shall sail to leeward of the Race Committee Boat on starboard tack, hail its sail number and be acknowledged by the Race Committee.
- 5.2 A boat retiring from a race shall attempt to notify a RC vessel before leaving the course, or, when that is impossible, at the race office, immediately after arrival ashore.
- 5.3 Boats shall not impede the passage of commercial vessels and shall comply with the U.S. Inland Navigation Rules Act of 1980. Boats that fail to comply promptly with signals from a committee boat to alter course, or that receive a 5-blast warning (5 short sounds) from a commercial vessel, will be subject to protest and possible disqualification.

**6 SCHEDULE**

Saturday, July 20	8:30-10:00	Check-in & Registration
	10:00-10:15	Safety/Support Boat Meeting
	10:30	Competitors Meeting
	12:00	First Race Warning
Sunday, July 21	10:00	First Race Warning
	15:00	No warning signal will be made after
	ASAP after racing	Awards presentation

**7 THE COURSE**

- 7.1 The diagrams attached as Appendix A show the courses, including the approximate angles between legs, the order in which the marks are to be passed, and the side on which each mark is to be left.
- 7.2 The courses will be WM, W4, M and M2. The course will be indicated by a placards displayed on the signal boat at the warning signal for that class.
- 7.3 When there is a gate, boats shall sail between the gate marks from the direction of the previous mark and subsequently complete their rounding around either of the gate marks.
- 7.4 Boats shall not cross the start or finish line except to start, finish, or correct a starting error. Boats that cross this line during a leg of the race may exonerate their penalty by completing a Two-Turns penalty as defined in RRS 44.2
- 7.5 To change the next leg of the course, the committee will lay a new mark (or move the finishing line) and remove the old marks as soon as practicable.

**8 MARKS**

- 8.1 Marks of the course will be large yellow inflatable marks.
- 8.2 Mark 1 for the Opti fleet shall be orange.

**9 THE START/FINISH**

- 9.1 Races will be started using rule 26 with the warning signal made 5 minutes before the starting signal.
- 9.2 The start/finish line will be between a staff displaying an orange flag on the race committee signal boat and the course side of the designated orange mark at the port end of the line.
- 9.3 A boat starting later than 4 minutes after her starting signal will be scored DNS. This changes rules 63.1 and A5.
- 9.4 The RC may attempt to hail the recall numbers of OCS boats after the starting signal. This changes rule 29.1. The failure of any boat to hear the hail, promptness of the hail, failure to hail any boats, or the order of boats hailed shall not be grounds for redress. This changes rule 62.1.

**10 TIME LIMIT**

- 10.1 The time limit for each race will be 40 minutes for the first boat to finish.

**11 PROTESTS AND REQUESTS FOR REDRESS**

- 11.1 A boat is not permitted to protest another boat for breaking sailing instructions 5, or 13. The penalty for breaking these instructions may be less than disqualification at the discretion of the protest committee. This changes rule 60.1(a).
- 11.2 A boat intending to protest about an incident that occurs in the racing area shall notify the Race Committee finish boat of her intention as soon as possible after finishing, identifying the boat(s) being protested. This changes rule 61.1(a)
- 11.3 Protests forms will be available at and returned to the race office on shore.
- 11.4 The protest time limit is 30 minutes after the RC boat docks.

**12 SCORING**

- 12.1 One (1) race is required to be completed to constitute a series and a maximum of twelve (12) races are scheduled for each class.
- 12.1.1 When fewer than 5 races have been completed, a boat's series score will be the total of her race scores (no excluded scores).
- 12.1.2 When 5 to 9 races have been completed, a boat's series score will be the total of her race scores excluding her worst score (one excluded score).
- 12.1.3 When 10 or more races have been completed, a boat's series score will be the total of her race scores excluding her two worst scores (two excluded scores).

**13 SUPPORT BOATS**

- 13.1 All support boats shall register at the Race Office during the registration period and a responsible Support Person shall be identified
- 13.1.1 Support boats shall be marked with an identifying flag provided by CGRA, which shall be conspicuously displayed at all times during the event and shall comply with any instructions from race officials.
- 13.1.2 A refundable \$20 deposit will be required at registration for each support boat.
- 13.1.3 The Support Person for each support boat shall attend the scheduled meeting on Saturday, July 20.
- 13.2 While boats are racing, support boats shall not cause significant wake in the racing area and shall remain more than 50 feet from competitors, except when asked to assist by a race official.
- 13.3 Coaching on the water is permitted between races. After the warning signal for a given race, coaching shall cease until a competitor has finished that race. To avoid any interference with boats still racing, competitors should to sail to an area off the race course and at least 50 feet away from the start/finish line when meeting with coach/support boats.
- 13.4 Coaching while racing is permitted in cases when novice racers are slowing the progress of the regatta. Coaches shall only coach the back "10%" of the fleet if this is the case.

**14 PRIZES**

- 14.1 Awards will be awarded to both skipper and crew as follows:
- 1-4 boats pre-registered: 1 award
- 5-8 boats pre-registered: 2 awards
- 9 or more boats pre-registered: 3 awards

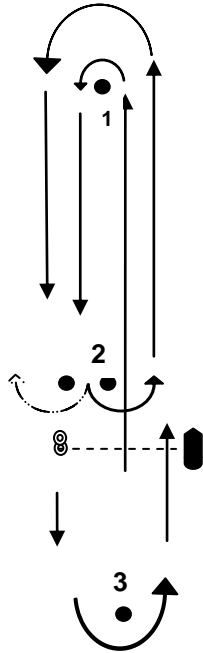
**15 RISK, DISCLAIMER OF LIABILITY, & PERSONAL CONDUCT**

- 15.1 Competitors participate in the regatta at their own risk. See Rule 4 (Decision to Race). The organizing authority will not accept any liability for material damage or personal injury or death sustained in conjunction with or prior to, during, or after the regatta.
- 15.2 Competitors will accept full responsibility for all their actions during any activity related to this event. This includes on-shore activities before, during, and after the regatta.
- 15.3 Competitors are expected to abide by the Marine Park Rules as stated in the Notice of Race.
- 15.4 No participant or competitor shall use, either on or off the water: marijuana or any other controlled substance (as defined in 21 U.S. Code 802) the possession of which is unlawful under 21 U.S. Code 841, or alcoholic beverages (distilled spirits, wine and beer, each as defined in chapter 51 of the U.S. Internal Revenue Code and intended for beverage use). An alleged breach of this requirement shall not be grounds for a protest. However, when the Protest Committee believes that a competitor may have breached the above requirement, it shall follow the process described in Rule 69.1, and a competitor found to have breached this requirement shall be excluded from the remaining races of the series and, where practicable, removed from the regatta venue and sent home. The competitor's boat shall be disqualified from all races of the series

**16 RIGHT TO USE NAME & LIKENESS**

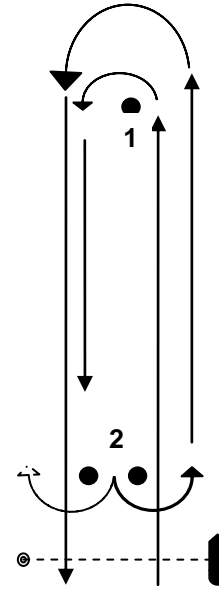
- 16.1 By participating in this event, all competitors automatically grant the organizers and sponsors the right to make, use and show, at any time and at their discretion, any photographs or videos of him or her produced during the period of the event without compensation.

### Appendix A: Courses



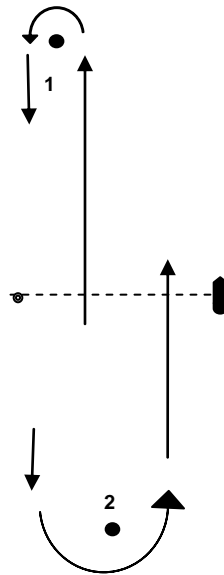
**WM**

Start-1-2-1-3-Finish



**W4**

Start-1-2-1-Finish



**M**

Start-1-2-Finish

**M2**

Start-1-2-1-2-Finish