

2019 Southern Comfort Classic  
May 4-5  
Jet-14 Class Association  
Arden NC, USA

## SAILING INSTRUCTIONS

### 1 RULES

The regatta will be governed by the rules as defined in *The Racing Rules of Sailing*.

### 2 NOTICES TO COMPETITORS

Notices to competitors will be posted on the official notice board located inside the sailing club facility.

### 3 CHANGES TO SAILING INSTRUCTIONS

Any change to the sailing instructions will be posted before 0900 on the day it will take effect, except that any change to the schedule of races will be posted by 2000 on the day before it will take effect.

### 4 SIGNALS MADE ASHORE

A single sound at the sailing club pavilion will signal an announcement. The sound will be followed promptly by the announcement.

### 5 SCHEDULE OF RACES

#### 5.1 Dates of racing:

<u>Date</u>	<u>Jet-14</u>
Saturday	Racing (1315-1630)
Sunday	Racing (0945-1200)

#### 5.2 Number of races:

There will be no limit on the number of races sailed each day.

#### 5.3 The scheduled time of the warning signal for the first race each day is 1315 on Saturday and 0945 on Sunday.

#### 5.4 On the last day of the regatta no warning signal will be made after 1200.

### 6 FLAGS

The following special flags will be used on the water:

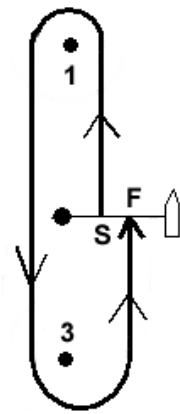
Class flag: Jet-14 plane                      Prep flag:                      Blue

### 7 RACING AREAS

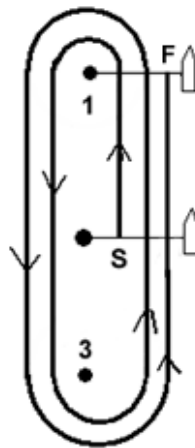
The central area of the lake will be the racing area.

### 8 THE COURSES

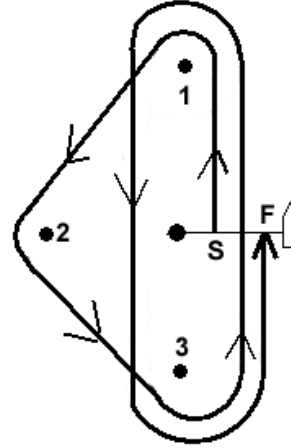
The diagrams below show the courses and the order in which marks are to be passed. All marks are to be passed to port. The start/finish line is open for racing. An offset mark *may* be used at the top mark. If the offset mark is in place at the start of the race, competitors should round it.



**S-1-3-F**  
**WL1**



**S-1-3-1-3-F**  
**WL2**



**S-1-2-3-1-3-F**  
**O2**

## 9 MARKS

Marks 1 and 3 will be orange cylinders. Mark 2 will be an orange ball.

## 10 THE START

Races will be started by using rule 26 with the warning signal (several short sounds) made a few seconds before the starting signal. The preparatory flag shall be a plain blue flag.

## 11 THE FINISH

For WL1 and O2, the finishing line will be between the orange flag on the committee boat and the starting pin. For WL2, the finishing line is between the windward mark and the safety boat.

## 12 TIME LIMITS AND TARGET TIMES

- 12.1 If no boat has passed Mark 1 within 20 minutes the race will be abandoned. Failure to meet the target time will not be grounds for redress. This changes rule 62.1(a).
- 12.2 Boats failing to finish within 20 minutes after the first boat sails the course and finishes will be scored Did Not Finish without a hearing. This changes rules 35, A4 and A5.

## 13 PROTESTS AND REQUESTS FOR REDRESS

- 13.1 Protest forms will not be available. Protests and requests for redress or reopening shall be communicated to Race Committee within the appropriate time limit.
- 13.2 The protest time limit is 60 minutes after the last boat has finished the last race of the day.

## 14 SCORING

Two races are required to be completed to constitute a series.

## 15 SAFETY REGULATIONS

A boat that retires from a race shall notify the race committee as soon as possible.

## 16 DISCLAIMER OF LIABILITY

Competitors participate in the regatta entirely at their own risk. See rule 4, Decision to Race. The organizing authority will not accept any liability for material damage or personal injury or death sustained in conjunction with or prior to, during, or after the regatta.